



F60 Butterfly Valve



ITT

ENGINEERED FOR LIFE

Tough services demand tough valves.



The Fabri-Valve Figure F60 rubber seated butterfly valve design platform is extremely flexible and can meet a multitude of face-to-face dimensions and pressure ratings. Computer-aided design is utilized allowing for accurate, cost effective designs. Since each valve is designed for a specific application the dimensions shown in this catalog are approximate.

Specifications

Size Range 36" – 96"

Pressure Rating

As specified. 400 psi (27.6 bar) – maximum

Temperature Rating

Consult factory for applications above 400°F (204°C)

Testing

Every Fabri-Valve Figure F60 valve is fully tested prior to shipment. Testing includes a body shell test, a seat test and a cycling test to insure proper functioning of moving parts. Additional testing is also available. Please let us know your requirements.

Standard Shell test:

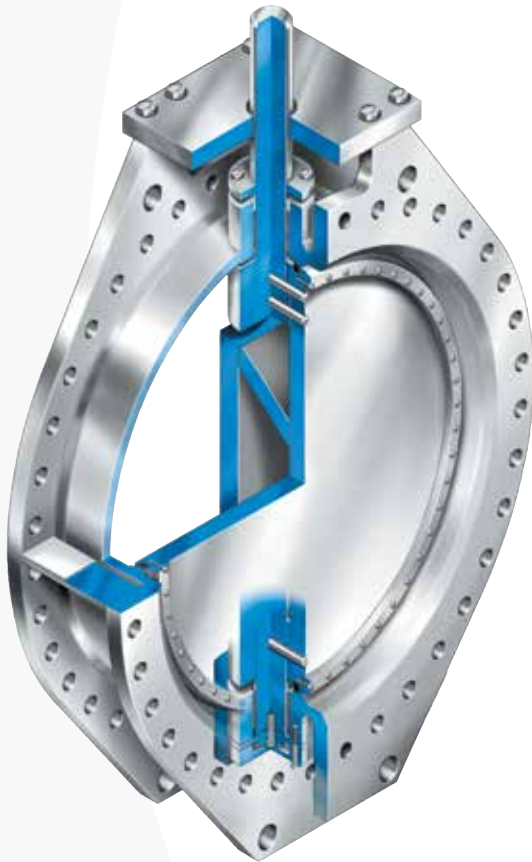
- Hydro test at 1.5 times the rated CWP (cold working pressure) – Zero allowable leakage

Standard Resilient Seat test:

- Resilient Seat: Hydro test at the rated CWP

Shutoff Performance

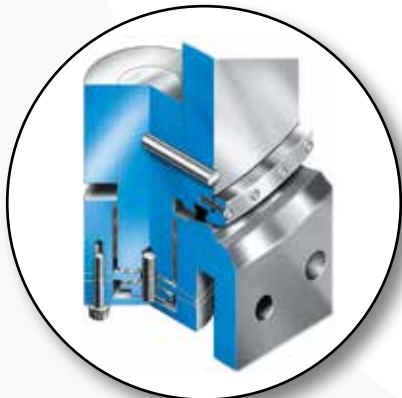
Zero leakage. All sizes and both flow directions.



Dimensions

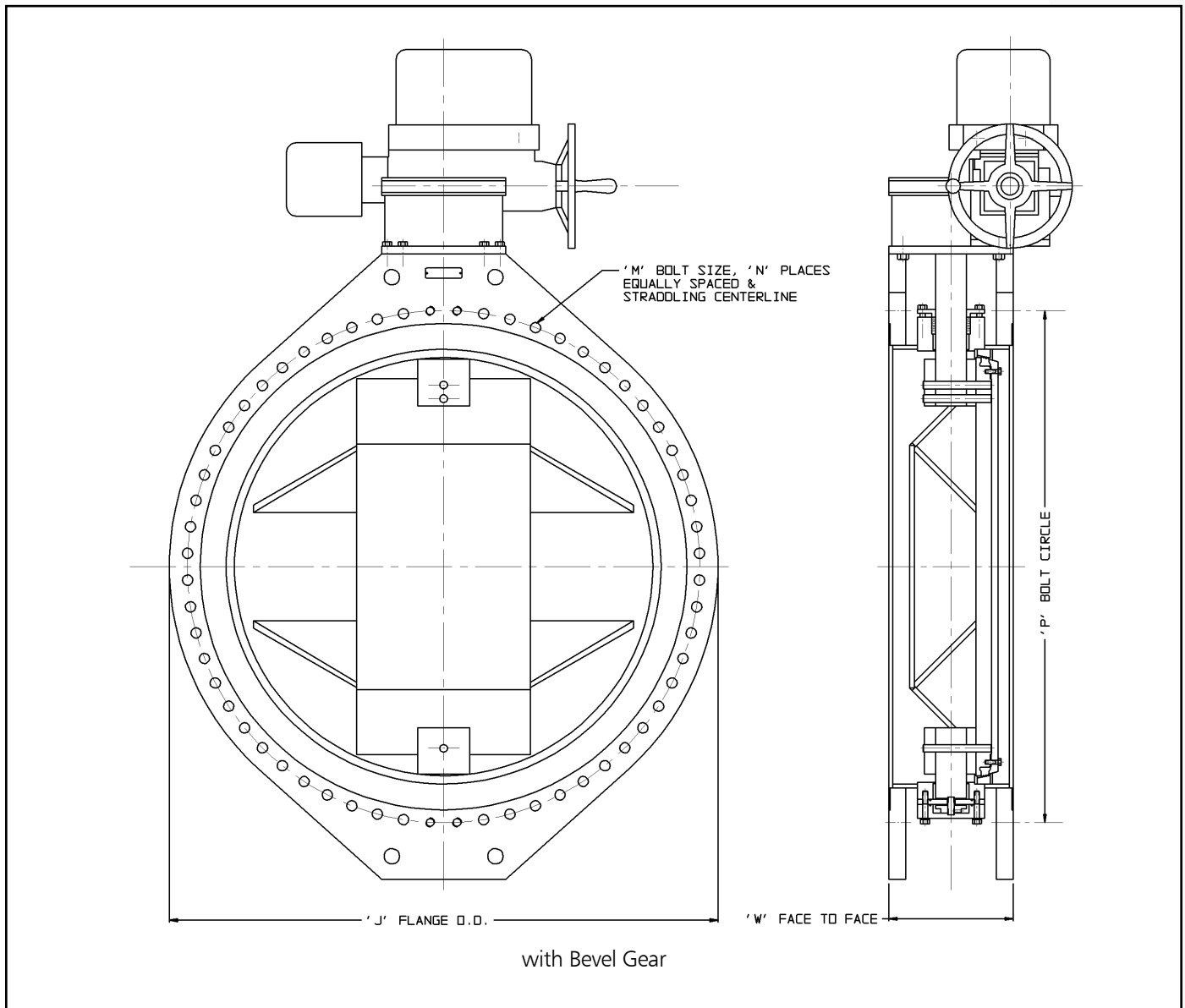
Valve Size		F60 BUTTERFLY VALVE				
Inches	DN	J	M	N	P	W
36	900	46 (1168)	1-1/2 (38)	32	44-3/4 (1086)	12 (305)
42	1050	53 (1346)	1-1/2 (38)	36	49-1/2 (1257)	12 (305)
48	1200	59-1/2 (1511)	1-1/2 (38)	44	56 (1422)	15 (381)
54	1350	66-1/4 (1683)	1-3/4 (44)	44	62-3/4 (1594)	15 (381)
60	1500	73 (1854)	1-3/4 (44)	52	69-1/4 (1759)	15 (381)
66	1650	80 (2032)	1-3/4 (44)	52	76 (1930)	18 (457)
72	1800	86-1/2 (2197)	1-3/4 (44)	60	82-1/2 (2096)	18 (457)
78	2000	93 (2362)	2 (51)	64	89 (2291)	18 (457)
84	2100	99-3/4 (2534)	2 (51)	64	95-1/2 (2426)	18 (457)
90	2250	106-1/2 (2705)	2-1/4 (57)	68	102 (2591)	21 (533)
96	2400	113-1/4 (2877)	2-1/4 (57)	68	108-1/2 (2756)	24 (610)

Reference Dimensions in (parentheses)



Materials of Construction

Part	Materials		
	F60R	F60S	F60M 2" - 24"
Body/Disc	Stainless steel	Stainless steel	Carbon steel
Flanges	Carbon steel	Stainless steel	Carbon steel
Seat	Stainless steel	Stainless steel	Stainless steel
Seal	Buna-N, EPDM, Viton or Neoprene	Buna-N, EPDM, Viton or Neoprene	Buna-N, EPDM, Viton or Neoprene
Packing	V-cup Buna-N	V-cup Buna-N	V-cup Buna-N
Packing Follower	Carbon steel	304 stainless steel	Carbon steel
Follower Bolting	Plated steel	Stainless steel	Plated steel
Bearings	Composite	Composite	Composite
Seal Retainer & Seal Retainer Fasteners	Stainless steel	Stainless steel	Plated steel



Flow Coefficients

The Cv values below represent U.S. gallons per minute 60°F water through a 100% open valve at a pressure drop of 1 psi. The metric equivalent, Kv, is the flow of water at +16°C through the valve in cubic meters per hour at a pressure drop of 1 kg/cm². To convert Cv to Kv, multiply the Cv by 0.8569.

Figure F60 Cv Ratings		
Valve Size		
In.	DN	
36	900	73 900
42	1050	100 600
48	1200	131 400
54	1350	166 300
60	1500	205 300
66	1650	248 450
72	1800	295 650
78	2000	347 000
84	2100	402 450
90	2250	462 000
96	2400	525 650



ENGINEERED FOR LIFE

ITT Engineered Valves
33 Centerville Road
Lancaster, PA 17603, USA
Tel: +1 (717) 509-2200

Cam-Line, Cam-Tite, Dia-Flo,
EnviZion, Pure-Flo, Skotch

ITT Engineered Valves
1110 Bankhead Avenue
Amory, MS 38821, USA
Tel: +1 (662) 256-7185

Fabri-Valve

ITT Industries Ltd.
Weycroft Avenue,
Millwey Rise Industrial Estate
Axminster, EX13 5HU, United Kingdom
Tel: +44 1297-639100

EnviZion, Pure-Flo