



ITT

Engineered Valves

Pure-Flo® Block and Bleed

(BBD, BBV)

The double block and bleed method of creating an aseptic barrier between two processes is widely utilized in the Bioprocessing industry. Traditionally three stand-ard valves would be fabricated into the double block and bleed configuration. The Block and Bleed Drain (BBD) and Block and Bleed Vent (BBV) valves integrate these three valves into one compact block, minimizing hold up volumes and enhancing cleanability. The compact design allows for greater valve density and flexible system design.

Typical Applications

- Create steam block, isolate and clean chamber for aseptic barrier
- Block line flow for the purpose of draining the line or filling from an auxiliary source

Specifications

Standard Sizes:

- 0.5" - 2" (DN15 - 50)
- Other sizes available upon request

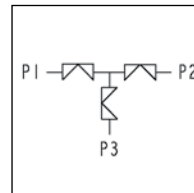
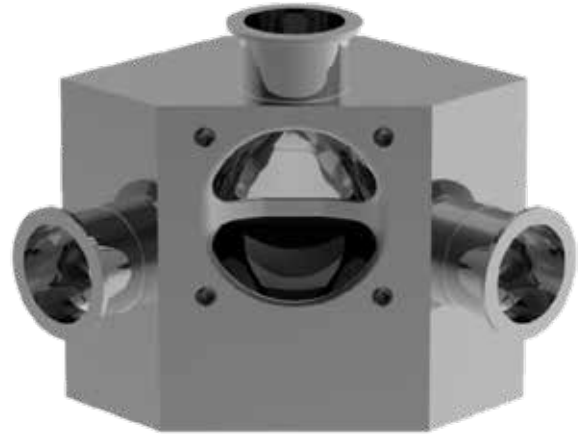
Materials:

- 316L ASTM - A479
- DIN 177440, 1.4435
- Other materials available upon request

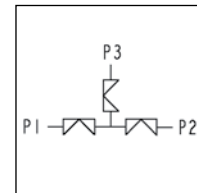
Standard End Connections:

- 14, 16, 18, 20 Gauge OD tubing
- DIN/ISO
- Tri-Clover Tri-Clamp®
- Others available upon request

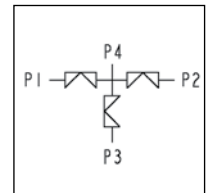
Compatible with standard Pure-Flo topworks: See PFTOP for details on available manual bonnets or actuator.



Block & Bleed
Code: BBD



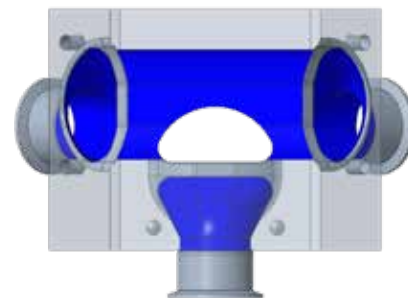
Block & Bleed
Code: BBV



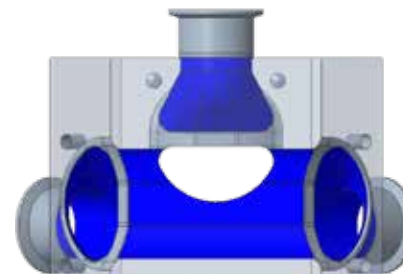
Block & Bleed with
Optional Vent Port

Flow Path

BBD



BBV



How to Order a Block and Bleed

1.5" Block and Bleed, wrought stainless steel, Tri-Clamp ends, 25 Ra interior finish, standard exterior finish (Scotch Brite).

Figure Number: BBD-1.5-419-W-6-1-0-0

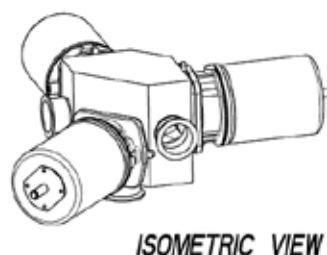
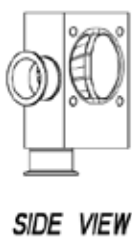
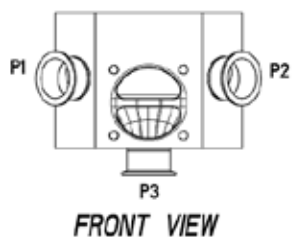
Configuration Example		BBD	1.5	419	W	6-1-0
Valve Body	Block Type	BBD				
	Valve Size		1.5			
	Type (.5" only) ¹					
	Body End Connections (P1, P2, P3) ²			419		
	Body Material				W	
	Polish Selections					6-1-0

¹ For .5 inch valve, must specify Pure-Flo (PF) or Bio-Tek (BT).

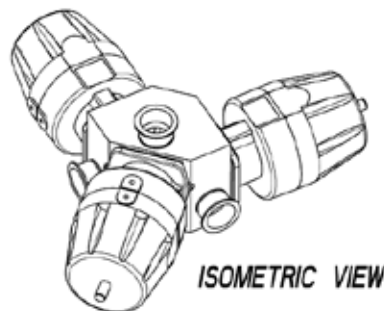
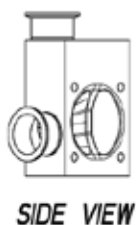
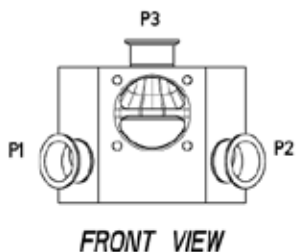
² Contact the factory for additional options for discrete end connection selections.

To add topworks, see BBTOP. For additional figure numbers, see PFORD.

BBD



BBV



Please contact ITT Engineered Valves for the latest drawing and dimensional information. The above drawing should only be used as a general reference.



ITT Engineered Valves
33 Centerville Road
Lancaster, PA 17603, USA
Tel: +1 (717) 509-2200

Cam-Line, Cam-Tite, Dia-Flo,
EnviZion, Pure-Flo, Skotch

ITT Engineered Valves
1110 Bankhead Avenue
Amory, MS 38821, USA
Tel: +1 (662) 256-7185

Fabri-Valve

ITT Bornemann GmbH
31683 Obernkirchen
Germany
Tel: +49 5724 390-0

EnviZion, Pure-Flo