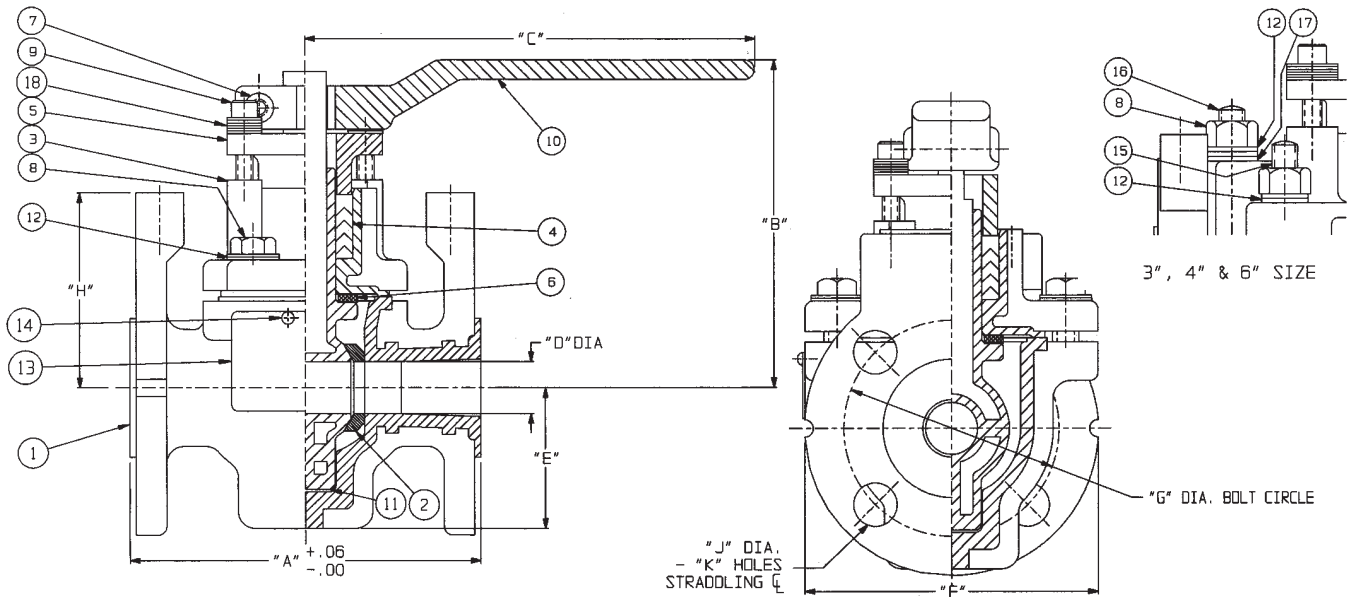


# Dimensions for Manual Valves, Materials of Construction



Inches

Valve Size	"A"	"B"	"C"	"D"	"E"	"F"	"G"	"H"	"J"	"K"	Weight-Lbs
3/4"	5.00	4.77	6.50	0.75	2.22	1.75	2.75	2.81	*		8.7
1"							3.12		0.62		9.5
1-1/2"	6.50	5.06	8.50	1.12	2.59	5.00	3.88	3.00	0.62		17.5
2"	7.00	5.38		1.50	3.03	6.00	4.75	3.12	0.75		24.0
3"	8.00	6.47	12.50	2.25	3.91	7.50	6.00	4.31	*0.75		49.5
4"	9.00	7.38		3.00	4.72	9.00	7.50	4.88	*0.75		71.0
6"	10.50	9.06	16.56	4.00	6.21	11.00	9.50	6.12	*0.88	α	148.0

MM

Valve Size	"A"	"B"	"C"	"D"	"E"	"F"	"G"	"H"	"J"	"K"	Weight-Kgs
3/4"	127.0	119.9	165.1	19.1	51.6	108.0	70.0	71.1	*		3.9
1"							79.2		15.7		4.3
1-1/2"	165.1	128.5	215.9	28.4	65.8	127.0	98.6	76.2	15.7		7.9
2"	177.8	136.7		38.1	77.0	152.4	120.7	79.2	19.1		10.8
3"	203.2	164.3	327.9	57.2	99.3	190.5	152.4	109.5	*19.1		22.3
4"	228.6	187.5		76.2	119.9	228.6	190.5	124.0	*19.1		32.0
6"	266.7	230.1	420.6	101.6	157.7	279.4	241.3	155.4	*22.4	α	66.6

\* 3/4" 150 Lb. class flanged bolt holes are tapped 1/2"-13 UNC class 2B.

Top two flanged bolt holes on 3" & 4" 150 Lb. class valves are drilled and tapped 5/8"-11 UNC class 2B

Top four flanged bolt holes on a 6" 150 Lb. class valve are drilled and tapped 3/4"-10 UNC class 2B.

Item	Description	Material	Qty
1	Body (Lined)	DI ASTM A395 GR. 60-40-18	1
2	Seat	Reinforced PTFE	2
3	Cover (Lined)	DI ASTM A395 GR. 60-40-18	1
4	Packing, "V"-Ring (Complete Set)	PTFE	1
5	Follower, Gland-PVDF Coated	DI ASTM A536 GR. 65-45-12	1
6*	Washer, Thrust	PTFE	1
6**	O-Ring		
7	Screw, Hex Soc. Hd. Cap	CS	1
8	Screw, Hex Hd. Cap	CS ASTM A193-B7	4
8+			4
8#			6
8##			10
9	Screw, Hex Soc. Hd. Cap	CS	2
10	Handle	DI ASTM A536 GR. 65-45-12	1
11	Ball/Stem (Lined)	DI ASTM A536 GR. 65-45-12	1
12			8
12#			12
12##			20
13	Plate, Identification	SS	1
14	Screw, Drive	CS	2
15	Stud		4
15##			6
16#	Stud		2
16##			4
17#	Flat Washer	CS	2
17##			4
18	Washer, Belleville	SS	12
	Lubricant	Dupont KRYTOX® GPL-206	

+ 3" only

# 4" only

## 6" only

\* 3/4" only

\*\* 4" and 6" only