

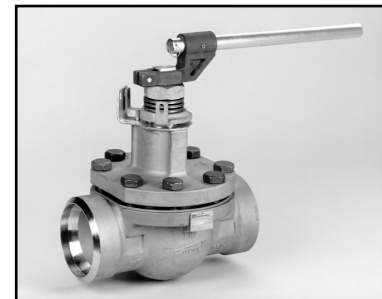
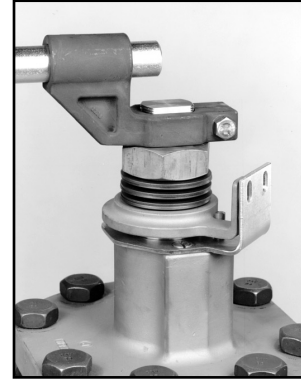
## Top Entry Ball Valves

### 6" Severe Service Bonnet

The severe service bonnet is now available for the 6" Cam-Tite Ball Valve. With the release of this bonnet, the 6" Cam-Tite can today be supplied with standard, extended, severe service, and bellows stem seal arrangements.

The 6" severe service bonnet is available for both ANSI Class 150 and 300 valves in flanged and butt-weld ends. Materials of construction include WCB carbon steel, 316 stainless steel, Alloy 20, and other high alloy grades. Packing selections include PTFE (Chevron V-rings) and carbon graphite. The bonnet can also be supplied with the optional monitoring port for leak detection or seal padding. The 6" severe service bonnet is supplied as standard with a locking device to meet OSHA 1910.147 lockout requirements.

For more details on the dimensions and materials of construction for the 6" severe service bonnet, see the reverse side of this datasheet.



### Severe Service Bonnet Features/Benefits

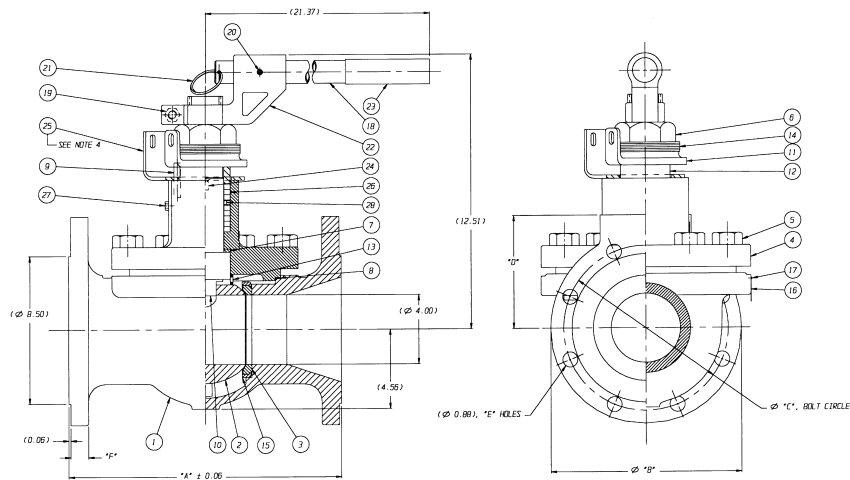
As applicable to every size of Cam-Tite Ball Valves, the severe service bonnet provides the user with the following design features and performance advantages:

<b>FEATURE</b>	<b>BENEFIT</b>
Extended Cover Design	Allows for a minimum of 2" of piping insulation to be installed around the bonnet. Ideal for high and low temperature services.
Primary Lower Stem Seal	Maintains primary lower stem seal upon which successful performance of the Cam-Tite in severe duty has been based.
Secondary Stacked Packing	Provides redundant stem sealing system to augment primary seal. Chevron V-ring packing recognized for long-term sealing benefits.
Live-Loaded Stem Sealing	Stack of 6 belleville spring washers compensate for packing relaxation and for variations in service temperature and pressure.
Optional Purge Port	Purge port with lantern ring allows for leak detection or for padding of the stuffing box with compatible lubricant or inert gas.
Low Operating Torque	Low operating torque of the Cam-Tite Ball Valve reduces lateral stress on the packing, providing long-term, trouble-free service.

## 6" Cam-Tite Ball Valve Severe Service Bonnet

### Basic Bonnet Dimensions

The drawing at right provides the basic dimensions of the 6" severe service bonnet. For more detailed information, consult Engineered Valves.



### List of Components

The following abbreviated table lists the major components and materials of construction which comprise the 6" severe service bonnet:

ITEM	<b>COMPONENT - AVAILABLE MATERIALS*</b> <i>*other materials available upon request</i>
4	Bonnet - WCB carbon steel, 316 stainless steel, Alloy 20, Hastelloy
5	Cover Bolts - carbon steel B7, carbon steem B7M, stainless steel B8, Alloy 20, Inconel
6	Packing Nut - carbon steel, stainless steel, Hastelloy, Inconel
7	Lower Stem Seal - PTFE, RTFE, graphite
8	Cover Gasket - PTFE, RTFE, graphite
9	Stop Pin - stainless steel
11	Travel Stop - carbon steel
12	Packing Gland - stainless steel, Hastelloy, Inconel
14	Spring Washers - carbon steel, stainless steel, Inconel
18	Handle - carbon steel, stainless steel
19	Handle Screw - carbon steel, stainless steel
22	Lever Hub - carbon steel
23	Handle Grip - plastic
25	Locking Plate - carbon steel, stainless steel
26	Stacked Packing - PTFE, graphite
27	V-Notch Vent Plug - carbon steel, stainless steel, Alloy 20, Hastelloy
28	Lantern Ring - stainless steel, Alloy 20, Hastelloy

## Industrial Group

### REGIONAL OFFICES

For more information write to:  
**Engineered Valves Headquarters**  
 33 Centerville Road, P.O. Box 6164  
 Lancaster, PA 17603-2064 USA  
 or call: (800) 366-1111  
 (717) 509-2200

Fax: (717) 509-2336  
 Website: [www.engvalves.com](http://www.engvalves.com)  
 E-mail: [engvalves\\_custserv@fluids.ittind.com](mailto:engvalves_custserv@fluids.ittind.com)

**ATLANTIC - USA**  
 Phone 800-231-0328  
 Phone (717) 509-2200  
 Fax 800-231-0330  
 Fax (717) 509-2336

**CENTRAL - USA**  
 Phone 800-366-4770  
 Phone (717) 509-2200  
 Fax 800-231-0330  
 Fax (717) 509-2336

**PACIFIC - USA**  
 725 E. Cochran Street, Unit E  
 Simi Valley, CA 93065  
 Phone 800-926-8884  
 Phone (805) 520-7200  
 Fax (805) 520-7205

**SOUTH AMERICA**  
 Av. 11 de Septiembre #1363  
 Of. 1403 Providencia  
 Santiago - Chile  
 Phone +56-2-264-9491 (9637)  
 Fax +56-2-236-1799

**MEXICO**  
 Insurgentes Sur No. 670-7°P  
 Co. Del Valle  
 C.P. 03100 Mexico D.F.  
 Phone +52-5-669-5002  
 Fax +52-5-669-5289

**PUERTO RICO**  
 P.O. Box 1225  
 Hato Rey, PR 00919  
 Phone (787) 758-0365  
 Fax (787) 771-6439

**EUROPE**  
 Richards Street  
 Kirkham, Lancashire  
 PR4 2HU, England  
 Phone +44-1772-682696  
 Fax +44-1772-686006

**HONG KONG**  
 Units 1903-04 CRE Centre  
 928-930 Cheung Sha Wan Road  
 Kowloon, Hong Kong  
 Phone +852-2741-6302  
 Fax +852-2741-6605