

Advantage® Actuators for Weir Type Valves

Introduction

The operationally proven low profile Advantage Actuator is now available for industrial weir style diaphragm valves.

To meet the changing needs of our customers, we have combined the Advantage Actuator with the Dia-Flo diaphragm valve. This new combination gives the valve a smaller installation envelope, the latest automation technologies, and proven long life.

Through the use of a new 316 stainless steel investment cast bonnet we are able to mount the Advantage Actuator to plastic lined, rubber lined, glass lined and unlined weir style industrial diaphragm valves.

The Advantage Actuator can also be paired with the newly available ANSI B16.10 Face-to-Face diaphragm valve. This provides customers a direct replacement for ball and plug valves as well as all of the actuation features they seek. The outcome is a valve that is cleaner, more robust in difficult applications and repairable in-line.

Features

- Small dimensional envelope
- Corrosion resistant exterior
- Available on lined and unlined valves
- Rugged switch mounting on top of actuator
- Stainless steel and ductile iron bonnets
- Discrete and Network Protocol switch packages available

Benefits

- Allows for installation into tight spaces such as around the top of reactors
- Provides for longer life and better aesthetics in corrosive environments
- Allows for use on most common applications
- Provides a compact actuated package free from brackets and striker arms which could become damaged
- Provides for more robust mounting than plastic bonnets
- Provides the latest in communication technology



Figure 3-2556-TM-34-C7-A234

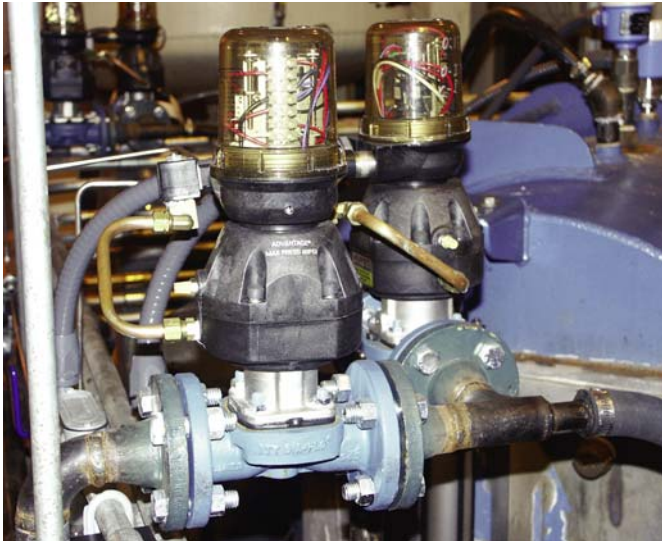
Advantage® Actuators for Weir Type Valves

Smaller Dimensional Envelope

Check the size differential for a typical fail close application

- 2" Line Size
- 100% ΔP
- 90 psi line pressure
- 90 psi air pressure

46% reduction in height
 35% smaller in diameter
 51% reduction in weight



Weir type plastic lined valve with Advantage Actuator

Understanding Advantage Actuator Model Numbers

A = Advantage Actuator

Mode

- 1** Fail Open, air to close, spring to open
- 2** Fail Close, air to open, spring to close
- 3** Double Acting, air to close, air to open

Actuator Series Size

- 05** (05, 06)
- 08** (08, 09)
- 16** (15, 16, 17)
- 33** (32, 33, 34, 35)
- 47** (47, 48)

Examples:

Model # A308= double acting actuator series 8

Model # A 232=fail closed actuator series 33 with a 32 spring set

Note: Series size 05, 08 etc. equates to diaphragm effective area;
 Values in parentheses are specific spring combinations for fail closed actuators