

## Finishes and Coatings

### Finishes and Coatings for Manual and Automated Valves

#### Standard Primer

Dia-Flo diaphragm valves are painted using a fast dry, lead free, Safety Blue primer. The prime coat is a dispersion resin modified medium oil alkyd developed for use on iron and aluminum. It is recommended that a suitable top coat be applied over the primer.



Standard Primer

#### White Epoxy Coating

Dia-Flo valves may be ordered using an optional decorative white epoxy coating when the appearance of your installation is important. White epoxy spray coating is applied using a primer and top coat to the valve body, bonnet shell, hand wheel and actuator when specified. Coating thickness is 4-10 mils. Valves ordered with white epoxy coatings include stainless steel fasteners.



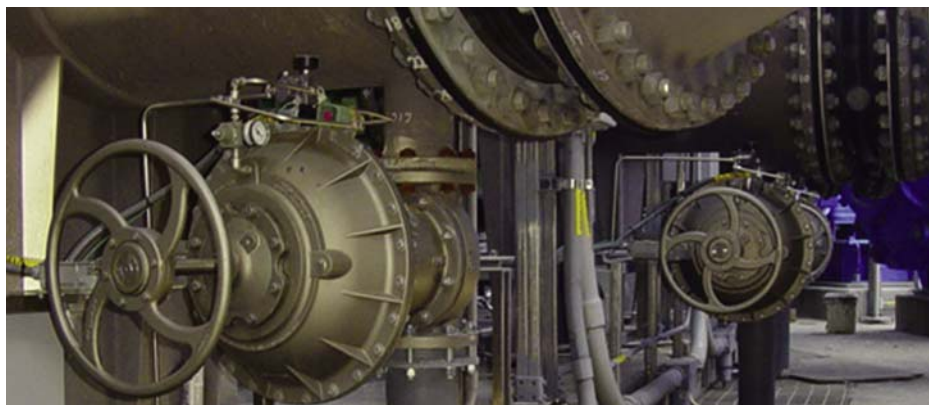
White Epoxy Coating

#### PVDF Coating

Service life of valves that are installed in a corrosive atmosphere may be greatly extended by the use of PVDF coating. PVDF coatings provide atmospheric corrosion protection, particularly fume and splashing. Coating is applied to the body, bonnet shell, hand wheel, and actuator when specified. Coatings are a metallic gray dispersion coating that is applied using a minimum of three steps: a prime coat; an intermediate coat and a final coat. Coating thickness is 5-9 mils. Fasteners on PVDF coated valves are stainless steel.



PVDF Coating



Automated valve with PVDF Coating installed at power plant.