



Fabri-Valve Product Portfolio

Engineered for life



Figure C37/F37



The **C37/F37** is the workhorse of the Fabri-Valve product portfolio. With its broad range of options and unfaltering performance, it is used in a variety of applications from handling process water to heavy slurries on a milling application.

Size Range

1.5" – 96"

Pressure Rating

1.5" – 48": 50psi, 100psi or 150 psi CWP

Larger than 48": Manufactured to customer spec

Temperature Rating

1.5" – 48": 450°F (232°C)

> 48": Manufactured to customer spec

Body, Chest and Flanges

Cast steel for 1.5"~24" (except 5" which is fabricated)

Sizes larger than 24" are fabricated from heavy plate.

Standard body materials include 304, 316, and 317L stainless steel.

Special alloys available.

Seats

Available with the widest range of seats in the industry including: integral metal, replaceable hard faced metal, rubber "D" ring, replaceable rubber, polyurethane, UHMW-P, and PTFE.

Flange Drilling

ANSI 125/150

Special drilling upon request

Figure 33PTA



The Fabri-Valve **33 PTA** Heavy Duty Slurry Valve incorporates a push-through design for heavy slurry service. Full ported valve eliminates turbulence and has no metal parts in contact with media. Sleeves are molded with an integral, fully encapsulated, stiffener ring and are replaceable without disassembling the valve. The valve gate is completely withdrawn from the process flow when in the open position and the seat design is without a cavity where solids usually collect.

100% factory tested for 100% bi-directional bubble tight shut-off

Size Range

3" - 24" (DN 80-600)

Pressure Ratings:

100 CWP (6.9 Bar)

Temperature Rating:

Valve Temperature Rating = 180° F (Non hazardous line media)

Hazardous/Non-Hazardous media above 180°F must utilize safety precautions such as a splash guard to redirect the high temperature or hazardous discharge (*Customer is responsible to protect personnel and environment from hazardous discharge*)

EPDM sleeves = 300°F

Buna N sleeves = 200°F

Natural Rubber sleeves = 180°F

Materials of Construction:

Body: Cast Ductile Iron

Gate: 316L Stainless Steel or requested alloy material per application

Seats: Natural Rubber, EPDM, BUNA N.

Figure 33PTD



The Fabri-Valve **33 PTD** Slurry Valve is a push through design also specifically designed for slurry service.

- Bi-directional shut-off with zero downstream leakage.
- Rubber lined port with no metallic components in the media flow path when the valve is open.
- No chest cavity for solids to build-up and bind the gate.
- Heavy duty self-supporting yoke.
- Lockouts in the open and closed position
- Rod boots protect the actuation in harsh environments.
- Media does not contact the gate in the fully open position.
- Integrated load distribution rings ensure proper seat support independent of the type of mating flange.

Size Range

3" – 24" (DN80 – DN600)

Pressure Rating

150 CWP (10.3 Bar) for sizes 3"-16" (DN80-400)
90 CWP (6.2 Bar) for sizes 18"-24" (DN450-600)

Temperature Rating

180°F (82°C)
Other temperature and chemical options are available.

Flange Drilling

ASME/ANSI 125/150
Alternate flange drilling is available

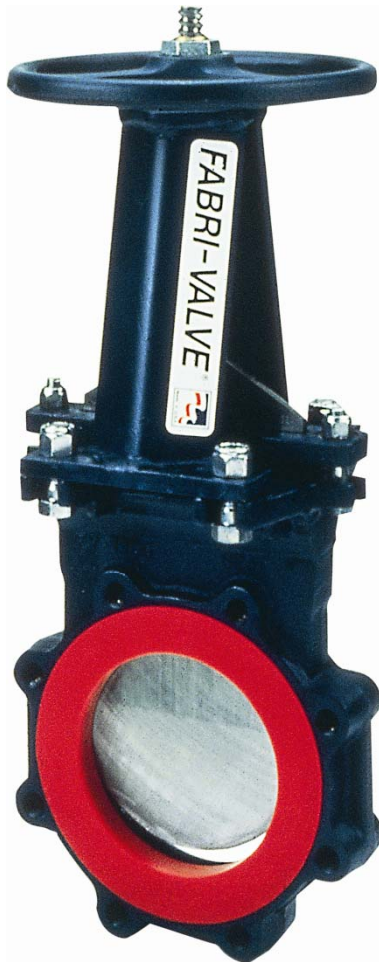
Seat Material

Natural rubber
EPDM
Contact the factory for other materials



* 33PTD is a discharging valve.

Figure C45



The basic Fabri-Valve **C45** features a solid ductile iron or carbon steel body with an integral cast metal seat. However, this valve is most often used with the patented, pop-in style replaceable seats, which are available in a variety of rubbers, polyurethane, UHMWP, TFE, and hard-faced metal.

The **C45** is a good alternative to the C/F37 when corrosion resistance is not required and initial first cost is at the forefront of the customers mind.

Size Range

2" – 24"

Pressure Rating

150 psi (10.3 bar) CWP

Temperature Rating

Maximum temp 250°F (121°C)

Service temperatures above 400°F (204°C) available

Body, Chest and Flanges

Solid ductile iron or carbon steel body

Seats

Standard integral cast metal seat. Optional pop-in style replaceable seats, which are available in a variety of rubbers, polyurethane, UHMWP, TFE, and hard-faced metal.

Flange Drilling

Flat faced ANSI 125/150

Figure C134 / F134 Bonneted Knife Gate



The Fabri-Valve **C/F134R/S** bonneted knife gate valve is used in difficult services that require high cycle stem sealing and superior stem seal containment.

- o Bonnet allows for a tight and easy to maintain stem seal.
- o The valve can be supplied with a gate wiper and purge ports in the bonnet to minimize movement of material into the bonnet.
- o Excellent for use in buried applications

Size Range

1.5" – 96"

Pressure Rating

1.5" – 24": 150psi CWP (higher ratings available)
>24": Per Customer Requirements

Temperature Rating

1.5"~48" 450°F (232°C), with designs available up to 2000°F

Packing

Teflon / Graphite

Body, Chest and Flanges

304, 316 and 317L stainless steel with special alloys such as 254 SMO®, Hastelloy C available

Flange Drilling

ANSI 125/150

Figure C37L



The Fabri-Valve **C37L** offers the corrosion resistance of a stainless steel lining with the economy of a cast iron body. The body and chest are lined with a choice of 304, 316 or 317L stainless steel.

Fully supported liners are vacuum leak tested during manufacturing.

Meets or exceeds specifications MSS-SP-81 and Tappi 405-8.

Size Range

30" & 36"

Pressure Rating

150 psi (10.3 bar) CWP

Temperature Rating

450°F (232°C)

Body, Chest and Flanges

Cast Iron Body

304, 316, 316L, 317L Liners and wetted parts

Packing

Acrylic / Silicone Core (Standard)

Flange Drilling

ANSI 125/150

Figure C67



With the Fabri-Valve Figure **C67**, our engineers have overcome the problems experienced with existing perimeter seal designs

- o Relief area around seal greatly reduces seal compression set
- o Seal design eliminates leakage due to seat rollover, and seat pullout and eliminates grooves that collect material
- o Unique, patented, perimeter seal for bubble tight bi-directional shutoff independent of line pressure
- o A very close tolerance fit under the handwheel to prevents damage due to vibration

Size Range

2" – 36"

Pressure Rating

2" – 24" 150 psi (10.3 bar) CWP (cold working pressure)

30" 100 psi (6.9 bar)

36" 80 psi (5.5 bar)

Consult factory for higher pressure designs.

Temperature Rating

EPDM Seat -50°F (-45°C) to 280°F (138°C)

Viton Seat -30°F(-34°C) to 350°F (177°C)

Seals

EPDM, Viton, AFLAS, Hycar, Hypalon, Neoprene, HNBR, and others

Body, Chest and Flanges

Stainless or Carbon Steel

Flange Drilling

ANSI 125/150 Drilling

Figure C33 / F33 & C133 / F133



Fabri-Valve Figures **C33 / C133 / F33 / F133** are bi-directional soft seated, slide gate valves designed for on/off service in heavy slurries.

- o Body liners and constant contact seats minimize seat stress ensuring exceptional service life
- o Seats are self-gasketing compatible with raised or flat faced, lined or unlined flanges.
- o Optional containment bonnet attached to the bottom flange to capture any discharge
- o Rubber lined, pocketless bore
- o Sealing surface protected from direct contact with media
- o Constant seat/gate contact throughout full stroke of the valve

Size Range

2" – 72"

Pressure Rating

2" – 24" : 150 (10.3 bar) CWP (cold working pressure)

26" and larger are rate to customer requirement.

Designs to 360 psi (24.8 bar) are available

Temperature Rating

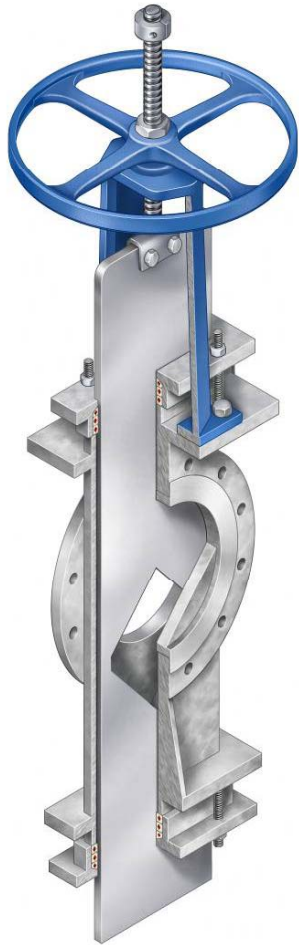
2" – 72": 200°F (93°C).

Higher temperature designs are available

Flange Drilling

ANSI 125/150

Figure F39 Ported Slide Gate Valve



The Fabri-Valve **Figure F39** slide gate valve is used in on/off and throttling difficult abrasive and/or high solids slurry services

- Round port configuration is used for on/off service
- Optional diamond port configuration for throttling.
- Handwheel or automated to operate in a static column of solid particles and powders.
- Fabricated from any weldable alloy, provides versatility

Size Range 1.5" – 96"

Pressure Rating

1.5" – 24": 150 psi (10.3 bar) CWP

25" – 48" : 50 psi (3.5 bar) CWP

100 psi (6.9 bar) CWP

150 psi (10.3) CWP

Above 48": Manufactured to customer specification

Higher pressure designs are available

Temperature Rating

1.5" – 48": 450°F (232°C)

>48" (DN1200) per customer specs

Designs available up to 2000°F(1093°C)

Flange Drilling

ANSI 125/150

Figure XS150

The Fabri-Valve® XS150 High Performance Knife Gate



Features

- Robust perimeter seal for bi-directional bubble tight shutoff
- Double-locked seal in the valve body to securely retain the perimeter seal for most demanding applications.
- Shoulders to mechanically retain (lock) the seal in the seal groove.
- The tab on the perimeter seal acts as the body joint seal and eliminates the possibility of body joint leakage caused by pipe stresses.
- Seal groove is designed to prevent seal pullout and allows the seal to move and prevent over compression.

Advantages

- True Full-Port Design with straight-through flow for gas, liquids, and slurries.
- Adjustments can be made under line pressure without valve disassembly or removal from the pipeline.
- Fewer components for quick and easy maintenance..
- Chest seal wraps around the entire gate eliminating leakage paths.

Size Range

2" – 24" (DN50 - DN600)

Pressure-Temperature Rating

2" – 24" ANSI Class 150 Pressure- Temperature Rating

Consult factory for higher-pressure designs*

Figure XS150-ULV



The Fabri-Valve® XS150-ULV Urethane Lined Knife Gate Valve designed for abrasive and corrosive applications.

- Does not discharge process media to the environment
- Robust perimeter seal that provides bi-directional, bubble-tight shutoff.
- Replaceable urethane liners are added to protect the body from abrasion and corrosion.
- A triple scraper that cleans the gate during operation and prevents media build up in chest area.
- Shoulders to mechanically retain the seal in the seal groove
- The seal groove is specially designed to prevent seal pull-out and allows the seal to move and prevent over-compression.

FV8000 Liner* & Seat are Independent:

Liner and slightly recessed seat work in harmony providing body protection and bubble-tight, bi-directional shutoff in abrasive and/or corrosive applications. Liner protects the perimeter seal from the abrasion of direct process flow. Liner material is harder for superior abrasion resistance since it is not used for sealing.

Triple scraper design is incorporated into liners which cleans gate during operation and prevents media build-up in chest area.

Size Range

2" – 24"

Pressure Rating

150 psi (10.3 bar) CWP (cold working pressure)

Temperature Rating

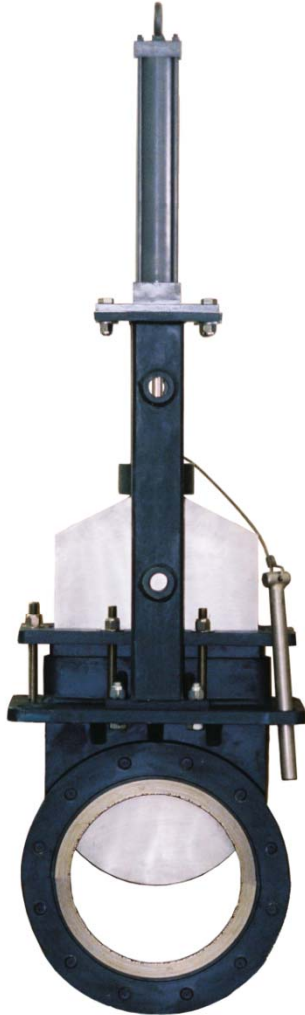
170°F (77°C) Standard

Higher temperatures available upon request.

Flange Drilling

ANSI 125/150 Drilling Standard.

Figure HD150 & HD300



The Fabri-Valve **HD150 and HD300** Heavy Duty Knife Gate Valves are designed to withstand abrasive, high pressure oil sands slurries

Design

- o Full rated CRN
- o Suitable for Dead End service (requires doughnut flange)
- o Standard heavy duty hydraulic cylinder rated at 3000 psi
- o Radii on gate edges optimizes packing efficiency and life
- o Six rows of resilient cored packing with internal live-loading in combination with two gate scrapers provide superior sealing and increased packing life.
- o Replaceable bi-directional chrome carbide hard faced metal seats shut off to Class IV
- o Secondary HNBR resilient seats

Advantages

Full Port design matches the internal diameter of schedule 40 pipe, which reduces flow restrictions
Full flanges, not scalloped, provide a high strength body design
Over designed gate clamp prevents gate clamp failure
Heavy duty yoke/superstructure and oversized actuation insures the valve will cycle under the harshest of applications
Optional cylinder actuation has been functionally tested at -58°F (-50°C)
Dual gate scrapers and six rows of resilient cored packing provide a robust sealing platform with improved service life

Sizes

6"-36"

Pressure Rating

HD150: ANSI Class 150 Pressure Rating
HD300: ANSI Class 300 Pressure Rating

ANSI B16.34 Wall Thickness; ANSI B16.5/B16.47 flanges; MSS-SP135
Face to Face
Designed and marked per ANSI B16.34

Figure S16



The Fabri-Valve Figure **S16** Urethane Lined Valve was specifically designed for Gypsum / Limestone Slurry (FGD Applications).

Features

- Bi-directional, zero leakage
- Body & packing gland material
- Gate material 2205 Duplex
- Epoxy primer coated A36 carbon steel
- Full port
- Flat faced flanges for use with rubber gaskets
- Urethane perimeter seal
- Perimeter seat
- Smooth bottom (No groove)
- Minimized chest area and close tolerances prevent media packing.

Size Range

30" ~ 60"
DN750~DN1500

Pressure Rating

30", 36" and 42": 110 psig (CWP) maximum
DN750, DN900, and DN1050: 7.6 Bars (CWP)
48", 54", and 60": 50 psig (CWP) maximum
DN1200, DN1350, and DN1500: 3.4 Bars (CWP)

Temperature rating

170°F (77°C) maximum

Flange drilling

ASME B16.47 (150# flat face)



Specialty Valves

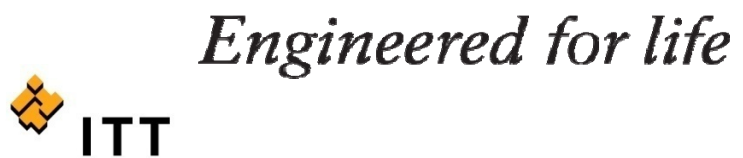
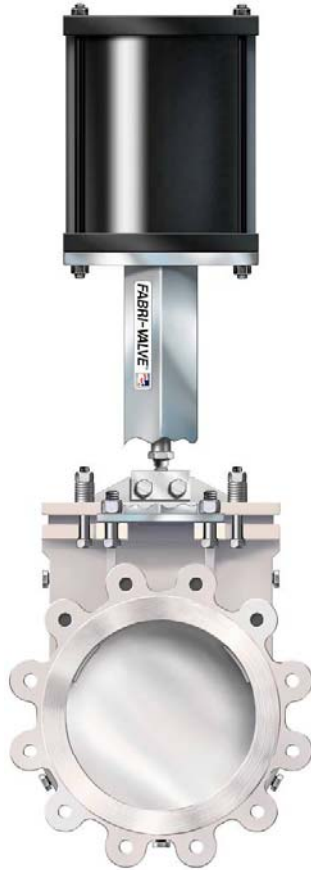


Figure C42 Recycle / Reject Valve



Fabri-Valve Figure **C42** solves numerous issues by selecting tough materials for the components that face the tough conditions by using a protected seat with impact resistant alloy. This creates a durable shear able to cut through wire, staples and other debris.

The C42 addresses physical damage of the sealing surfaces (gate and seat) due to:

- Wire, staples and other debris, resulting in unacceptable sealing degradation.
- Clogging and compacted items into the bottom of the valve, resulting in the failure of the valve to close completely, and excessive leakage.
- Damage of the gate surface, abrasion and high cyclic conditions.

The Vortex Breaker

- Hard-faced replaceable seat with hardened lugs on the internal diameter to disrupt the vortex adjacent to the gate face (Solves severe valve wear problems caused by sand and grit bearing vortices).

Features:

- Cast SS Body
- Hardened SS Gate
- Hard-faced Seat Face and Port ID
- Backing Rings
- Self-Supporting Yoke
- Oversized Actuation
- Live Loaded Packing
- Abrasion Resistant Packing
- Application
 - Knotter, Rejects and Cleaners
 - Cyclone cleaners

Figure C45 DFV



Fabri-Valve in conjunction with the Drilling Industry developed the **C45 DFV** specifically configured valve for the needs of Drilling Fluid Systems.

Features:

- Elimination of damage to pumps due to back pressure and volume restriction
- Long lasting pop in replaceable seats
- Zero leakage of fluid at 0 to 150 psi (10.3 bar)
- BI-directional shut-off at 0-150 psi (10.3 bar)
- Ductile Iron Body
- RP (Replaceable Poly) Seats
- 1st Row Kevlar (wiper) Packing
- PTFE Graphite Braided Packing
- Full Port (Flow Capacity ~ 40% greater than conventional Butterfly Valves)
- Zero Leakage (0 – 150) psi (0 - 10.3 bar)
- Replaces butterfly valve with no dimensional changes

Standard Flush Ports

Maximum temperature 250°F (121°C).

Drilling Fluid System Applications

- Mixing Tanks
- Storage Tanks
- Trip Tanks
- Transfer Tanks
- Settling Tanks

Figure F71



The fabricated, bolted bonnet, Fabri Valve Figure **F71**, OS and Y wedge gate valve is an economical alternative when full ANSI rated valves are not required.

In addition, the ability to select construction materials piece by piece can often result in substantial savings. The integral gate guides provide positive guidance of the wedge throughout the stroke of the valve.

Size Range: 3" – 84"

Pressure Rating:

3" – 24", 150 psi (10.3 bar)

Consult factory for higher pressure designs up to 750 psi (51.7 bar)

Above 24", designed to customer requirements.

Temperature Rating:

500°F (260°C) standard

Consult factory for applications to 1500°F (816°C)

Figure F44

The Fabri-Valve Figure **F44** is a fully customized multiport valve that features:

- No “Dead Leg”
- Metal or D-Ring Seats
- Fabricated Construction
- Any Weldable Alloy
- Multiple valve outlets



Size Range

3" – 48" (DN 80 – DN 1200)

Pressure Rating

3" – 24": 150 psi (10.3 bar) CWP

Above 24": Manufactured per customer's specification.

Temperature Rating

450°F (232°C) Standard

Consult factory for applications to 1500°F (816°C)

Service temperatures above 400°F (204°C) require high temperature fasteners.

Face to Face Flange Drilling

Per Requirement

Figure C132



The Fabri-Valve Figure **C132** transmitter isolation valve designed to isolate an instrument transmitter from a tank to allow for transmitter replacement or maintenance of the transmitter without disrupting the process or draining the vessel

Features:

- Fabri-Valve transmitter isolation valves are designed to fit installations where the upper tank flange bolts are located 25° to 27° above the horizontal centerline.
- Special materials such as 254 SMO® are also available.
- Isolate instrument transmitter from a tank
- Special "Tankside flange" for direct mounting
- Ratchet operator
- 316, 317L, 254SMO
- Metal or D-ring seats
- Acrylic Packing (Standard)

Size Range 3"

Pressure Rating 150 psi (10.3 bar) CWP (cold working pressure)

Temperature Rating 450°F (232°C) with standard packing.

Flanges Drilling Outlet ANSI 125/150 drilling Inlet special