

Fabri-Valve®

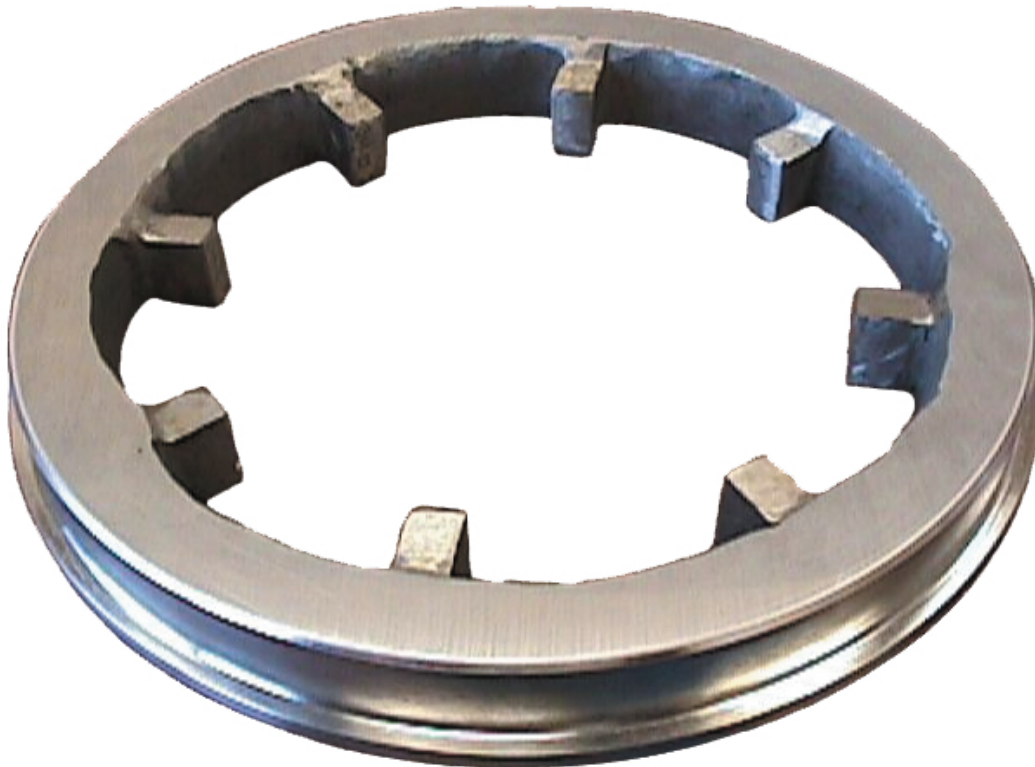
Vortex Breaker

Special seat solves severe wear problem.

Problem: An 8" competitor's, metal seated, ball valve located under a pulp mill knotter was experiencing severe wear as a result of a sand bearing vortex in the knotter, immediately above the valve. The valve was replaced with a Fabri-Valve Fig. 42. However, it too experienced severe wear of the hardened steel gate which required maintenance after only six weeks.

Solution: The standard hard faced Fig. 42 replaceable seat was replaced with a seat specially configured to disrupt the vortex adjacent to the gate and trap the swirling sand. The special seat consists of a standard Fig. 42 replaceable seat with the addition of a set of hardened lugs, welded to the ID, adjacent to the gate face.

Result: The valve has been in service for over 14 months *without service*.



Industrial Group

REGIONAL OFFICES

For more information write to:

Engineered Valves

1110 Bankhead Avenue
Amory, MS 38821 USA

or call: (800) 541-1849
(662) 256-7185

Fax: (662) 256-7932
Website: www.engvalves.com
E-mail: engvalves_custserv@fluids.ittind.com

ATLANTIC – USA

Phone 800-231-0328
Phone (717) 509-2200
Fax 800-231-0330
Fax (717) 509-2336

CENTRAL - USA

Phone 800-366-4770
Phone (717) 509-2200
Fax 800-231-0330
Fax (717) 509-2336

PACIFIC – USA

725 E. Cochran Street, Unit E
Simi Valley, CA 93065
Phone 800-926-8884
Phone (805) 520-7200
Fax (805) 520-7205

SOUTH AMERICA

Av. 11 de Septiembre #1363
Of. 1403 Providencia
Santiago – Chile
Phone +56-2-264-9491 (9637)
Fax +56-2-236-1799

MEXICO

Insurgentes Sur No. 600-4°P
Co. Del Valle
C.P. 03100 Mexico D.F.
Phone +52-5-669-5002
Fax +52-5-669-5289

PUERTO RICO

P.O. Box 1225
Hato Rey, PR 00919
Phone/Fax (787) 703-0402

EUROPE

Richards Street
Kirkham, Lancashire
PR4 2HU, England
Phone +44-1772-682696
Fax +44-1772-686006

HONG KONG

Units 1903-04 CRE Centre
928-930 Cheung Sha Wan Road
Kowloon, Hong Kong
Phone +852-2741-6302
Fax +852-2741-6605