



ITT



Pure-Flo[®] Integral Horizontal Sterile Access (IHSA)

The Integral Horizontal Sterile Access (IHSA) is designed for sterile access applications where the piping for the main valve and purge valve are both on a horizontal plane. The IHSA provides additional benefits over standard Horizontal Sterile Access (HSA) fabrications. The IHSA should be used whenever optimal drainability and minimal deadlegs are required in horizontal orientations.

Typical Applications

- Integral block incorporating second horizontal valve
- Ideal for vertical space constraints

Specifications

Standard Sizes:

- 0.5" - 4" (DN 15 - 100)
- Other sizes available upon request

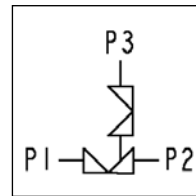
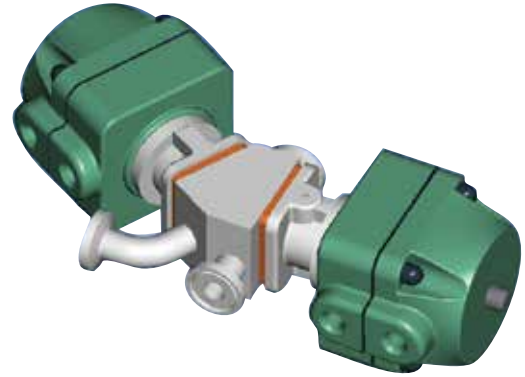
Materials:

- 316L ASTM - A479
- DN 177440, 1.4435
- Other materials available upon request

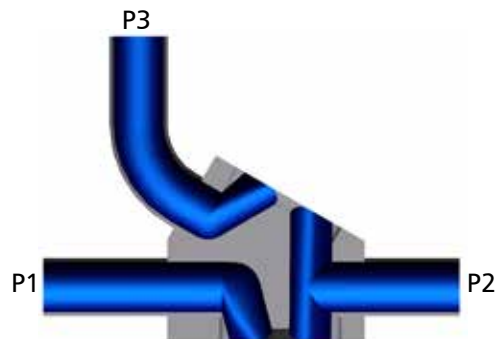
Standard End Connections:

- 14, 16, 18, 20 Gauge OD tubing
- DIN/ISO
- Tri-Clover Tri-Clamp[®]
- Others available upon request

Compatible with standard Pure-Flo topworks: See PFTOP for details on available manual bonnets or actuator.



Flow Path



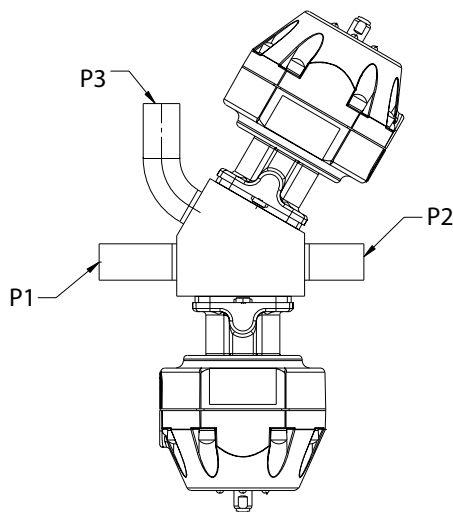
How to Order an Integral Horizontal Sterile Access

Integral Horizontal Sterile Access valve with a 1" wrought stainless steel body, all outlets have buttweld ends, 25 Ra interior finish, standard exterior finish (Scotch Brite).

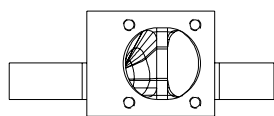
Figure Number: IHSA-1-428-1-428-W-6-1-0

Configuration Example		IHSA	1		428	1		428	W	6-1-0
Valve Body	Block Type	IHSA								
	Valve Size		1							
	Type (.5" only) ¹									
	End Connections (P1, P2)				428					
	Second Valve Size					1				
	Second Valve Type (.5" only) ¹									
	Second Valve End Connection (P3)							428		
	Body Material								W	
Polish Selections									6-1-0	

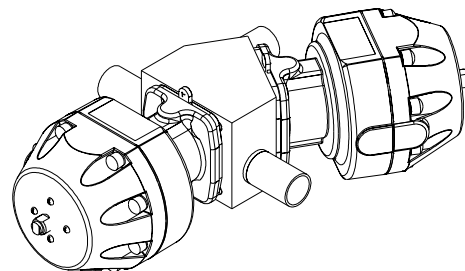
¹ For .5 inch valve, must specify Pure-Flo (PF) or Bio-Tek (BT).
To add topworks, see BBTOP. For additional figure numbers, see PFORD.



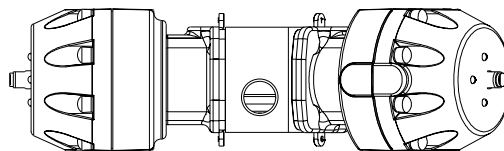
TOP VIEW



FRONT VIEW



ISOMETRIC VIEW



SIDE VIEW



ITT Engineered Valves
33 Centerville Road
Lancaster, PA 17603, USA
Tel: +1 (717) 509-2200

Cam-Line, Cam-Tite, Dia-Flo,
EnviZion, Pure-Flo, Skotch

ITT Engineered Valves
1110 Bankhead Avenue
Amory, MS 38821, USA
Tel: +1 (662) 256-7185

Fabri-Valve

ITT Bornemann GmbH
31683 Obernkirchen
Germany
Tel: +49 5724 390-0

EnviZion, Pure-Flo

Please contact ITT Engineered Valves for the latest drawing and dimensional information. The above drawing should only be used as a general reference.