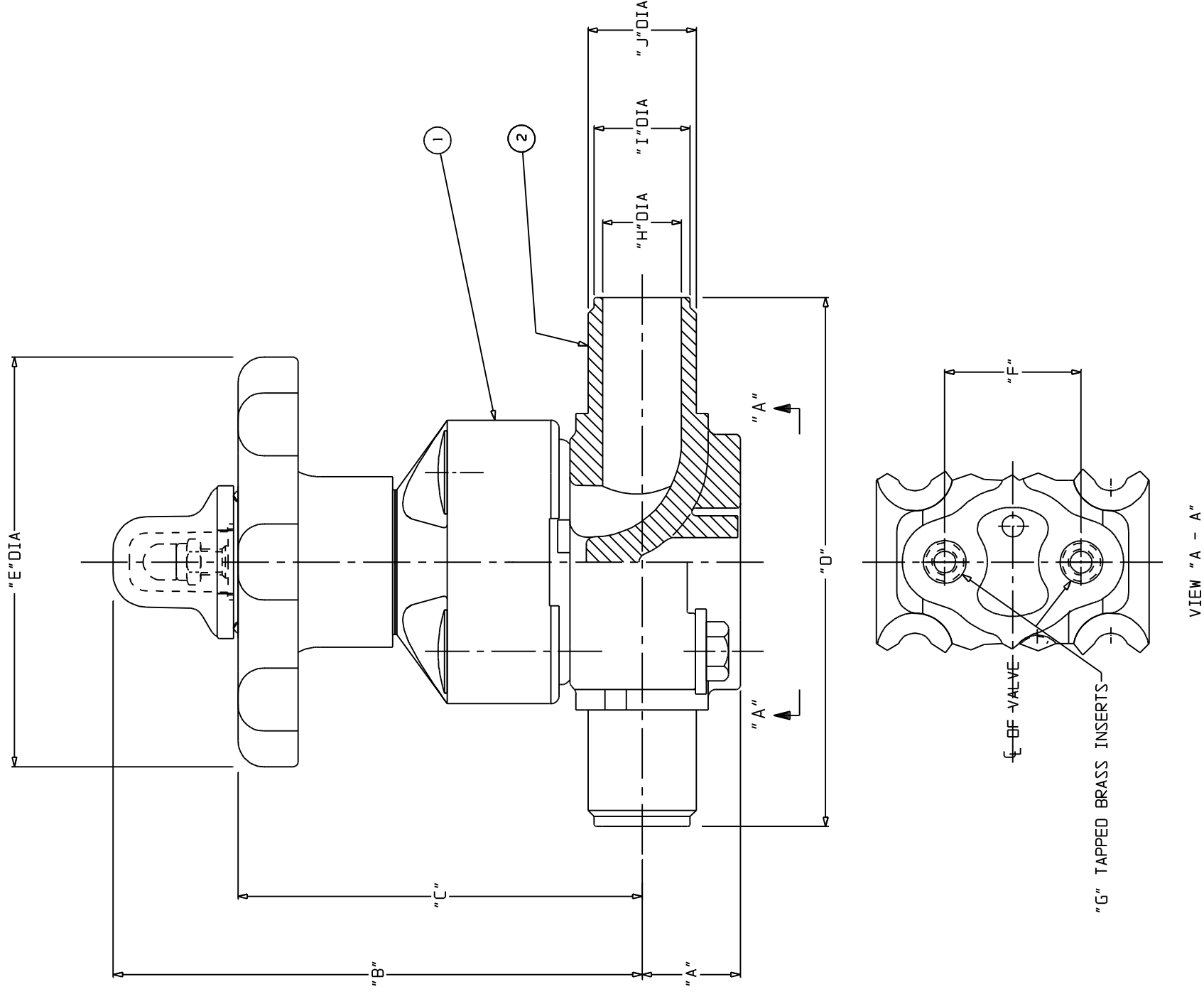


LIST OF PARTS

ITEM	DESCRIPTION	MATERIAL	QTY.
1	ASSEMBLY - BONNET	-	1
2	BODY - SPIGOT DIN 21	PVDF	1
2	BODY - SPIGOT DIN 11	POLYPROPYLENE	1



VALVE SIZE	"A"	"B"	"C"	"D"	"E" DIA	"F"	"G" THREAD
00.50	0.72 [18.3]	4.05 [102.9]	3.15 [80.0]	3.87 [98.3]	3.00 [76.2]	1.00 [25.4]	10-32UNF X .394 DP.
00.75	0.81 [20.6]	4.87 [123.7]	3.70 [94.0]	5.37 [136.4]	3.00 [76.2]	1.00 [25.4]	10-32UNF X .394 DP.
01.00	1.02 [25.9]	5.77 [146.6]	4.41 [112.0]	6.50 [165.1]	5.50 [139.7]	1.75 [44.5]	1/4-20UNC X .551 DP.
01.25	1.34 [34.0]	8.64 [219.5]	5.51 [140.0]	7.50 [190.5]	7.75 [196.9]	3.94 [100.1]	1/2-13UNC X .945 DP.
02.00	1.23 [31.2]	9.25 [235.0]	6.12 [155.4]	10.88 [276.4]	10.00 [254.0]	4.75 [120.7]	1/2-13UNC X .945 DP.
03.00	2.33 [59.2]	12.06 [306.3]	7.95 [201.9]	14.50 [368.3]	14.50 [368.3]	4.75 [120.7]	1/2-13UNC X .945 DP.
04.00	2.81 [71.4]	15.42 [391.7]	10.70 [271.8]	14.50 [368.3]	14.50 [368.3]	4.75 [120.7]	1/2-13UNC X .945 DP.

VALVE SIZE	"H" DIA		"I" DIA		"J" DIA	
	SDR 11	SDR 21	SDR 11	SDR 21	SDR 11	SDR 21
00.50	0.579 [14.7]	0.705 [17.9]	0.579 [14.7]	0.705 [17.9]	0.793 [20.1]	0.990 [25.1]
00.75	0.759 [19.3]	0.894 [22.7]	0.759 [19.3]	0.894 [22.7]	0.990 [25.1]	1.266 [32.2]
01.00	1.010 [25.7]	1.161 [29.5]	1.010 [25.7]	1.161 [29.5]	1.480 [37.6]	1.979 [50.3]
01.25	1.255 [31.9]	1.480 [37.6]	1.255 [31.9]	1.480 [37.6]	1.979 [50.3]	2.492 [63.3]
01.50	1.591 [40.4]	1.866 [47.4]	1.591 [40.4]	1.866 [47.4]	2.492 [63.3]	3.560 [90.4]
02.00	2.005 [50.9]	2.358 [59.9]	2.005 [50.9]	2.358 [59.9]	3.402 [86.4]	4.350 [110.5]
03.00	2.875 [73.0]	3.402 [86.4]	2.875 [73.0]	3.402 [86.4]	4.350 [110.5]	5.511 [140.0]
04.00	3.516 [89.3]	4.205 [106.8]	3.516 [89.3]	4.205 [106.8]	5.511 [140.0]	7.079 [179.9]

UNLESS OTHERWISE SPECIFIED, DIMENSIONS NOT SHOWN IN BRACKETS () ARE IN INCHES. DIMENSIONS SHOWN IN BRACKETS () ARE IN MILLIMETERS.

ENGRD VALVES ORDER: - ITEM: -

FIGURE NO.: -

CUSTOMER: -

CUSTOMER P.O.: -

THIRD ANGLE PROJECTION

ALL DIMENSIONS SHOWN ON THIS DRAWING ARE FOR REFERENCE ONLY

DATE BY VALVE ASSEMBLY WEIR 00.50 - 04.00

DWN 08/14/18 DJS PLASTIC HWD

CHKD 08/14/18 STD WITH SPIGOT - DIN ENDS

APVD 08/14/18 STD

MASTER DWG: 002928-1/1Z ECN# 16562 ISSUED BY: -

000000-000

SHEET 1 OF 1

REV

Engineered Valves
www.engvalves.com

ITT