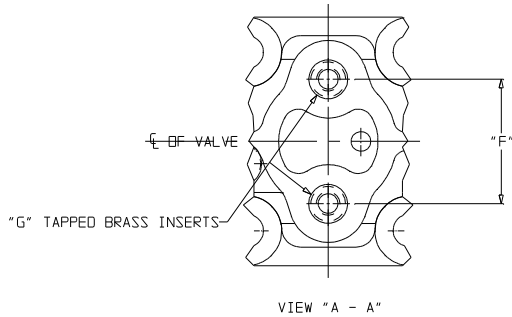
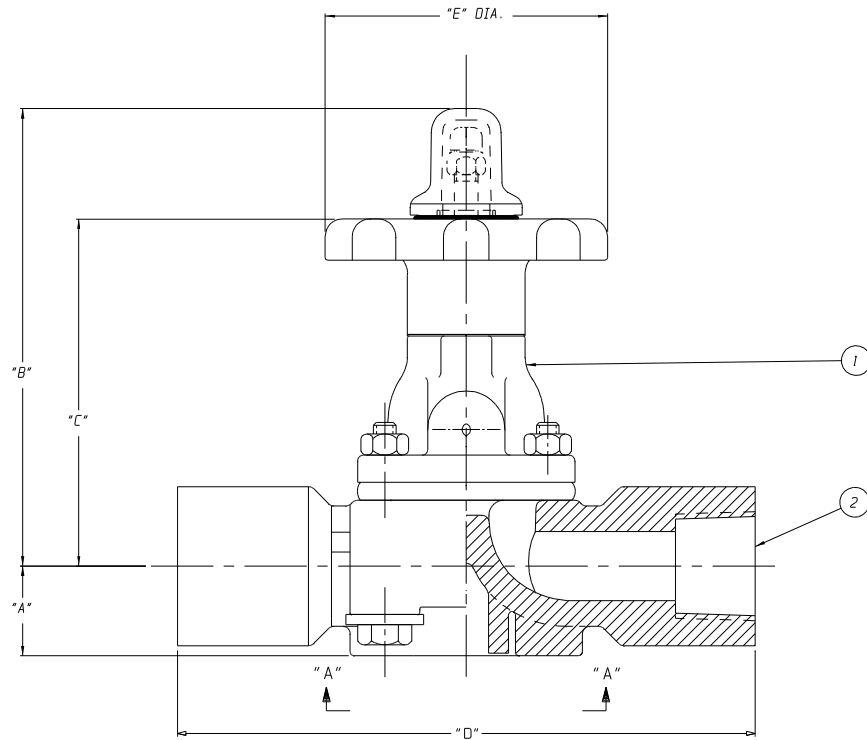


LIST OF PARTS

ITEM	DESCRIPTION	MATERIAL	QTY.
1	ASSEMBLY - BONNET	SEE SHEET 1	1
2	BODY - THREADED SCH.80	-	1



VALVE SIZE	"A"	"B"	"C"	"D"	"E" DIA	"F"	"G" THREAD
00.50	0.72 (18.3)	3.94 (100.1)	2.98 (75.7)	4.65 (118.1)	3.00 (76.2)	1.00 (25.4)	10-32UNF X .394 DP.
00.75	0.81 (20.6)	5.11 (129.8)	3.92 (99.6)	5.51 (140.0)			
01.00	1.02 (25.9)	5.84 (148.3)	4.45 (113.0)	6.34 (161.0)			
01.25	1.34 (34.0)	8.72 (221.5)	5.62 (142.7)	8.00 (203.2)	5.50 (139.7)	1.75 (44.5)	.250-20UNC X .551 DP
01.50							
02.00							

NOTE:  
 1. DIMENSIONS IN PARENTHESIS ARE METRIC (mm).

ECN# 1561

ITT ENGRD VLVS ORDER: \_\_\_\_\_  
 CUSTOMER: \_\_\_\_\_  
 CUSTOMER P.O.: \_\_\_\_\_  
 ISSUED BY: \_\_\_\_\_ CERTIFIED BY: \_\_\_\_\_

REV	DATE	ECN NBR	BY	CHKD	APVD	DATE	BY
-	-	-	-	-	-	07/29/96	JRD
B	11/21/97	3259	JLW	DJS	KEH	08/14/96	JLW
A	07/29/96	1561	JRD	JLW	KEH	08/26/96	KEH

VALVE OUTLINE  
 WEIR 00.50 - 02.00  
 900 SERIES METAL  
 BONNET WITH PLASTIC  
 BODY THREADED  
 SCH. 80 ENDS

**ITT Engineered Valves**

ITT Fluid Technology Corporation  
 Lancaster, Pa

CS D 003418 REV B  
 SHEET 1 OF 1