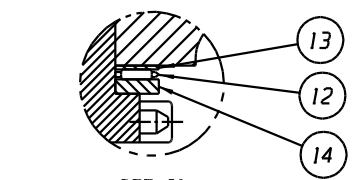
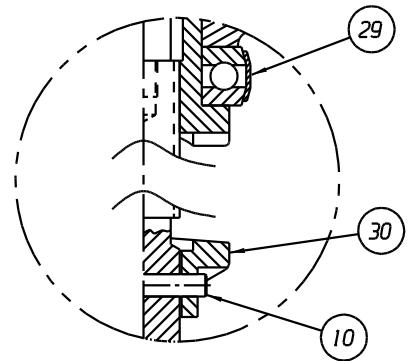


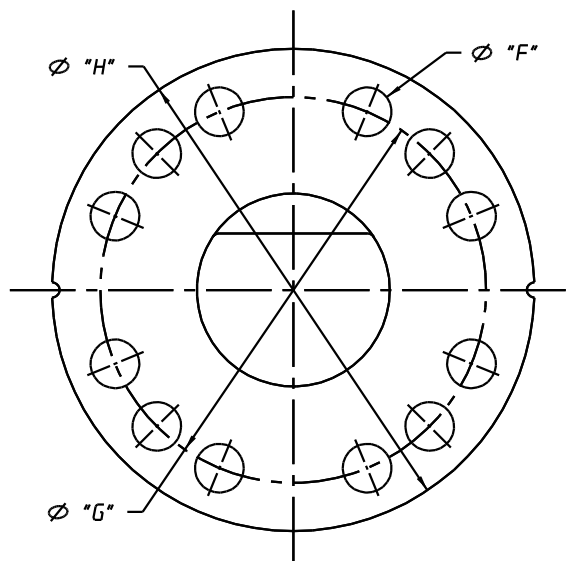
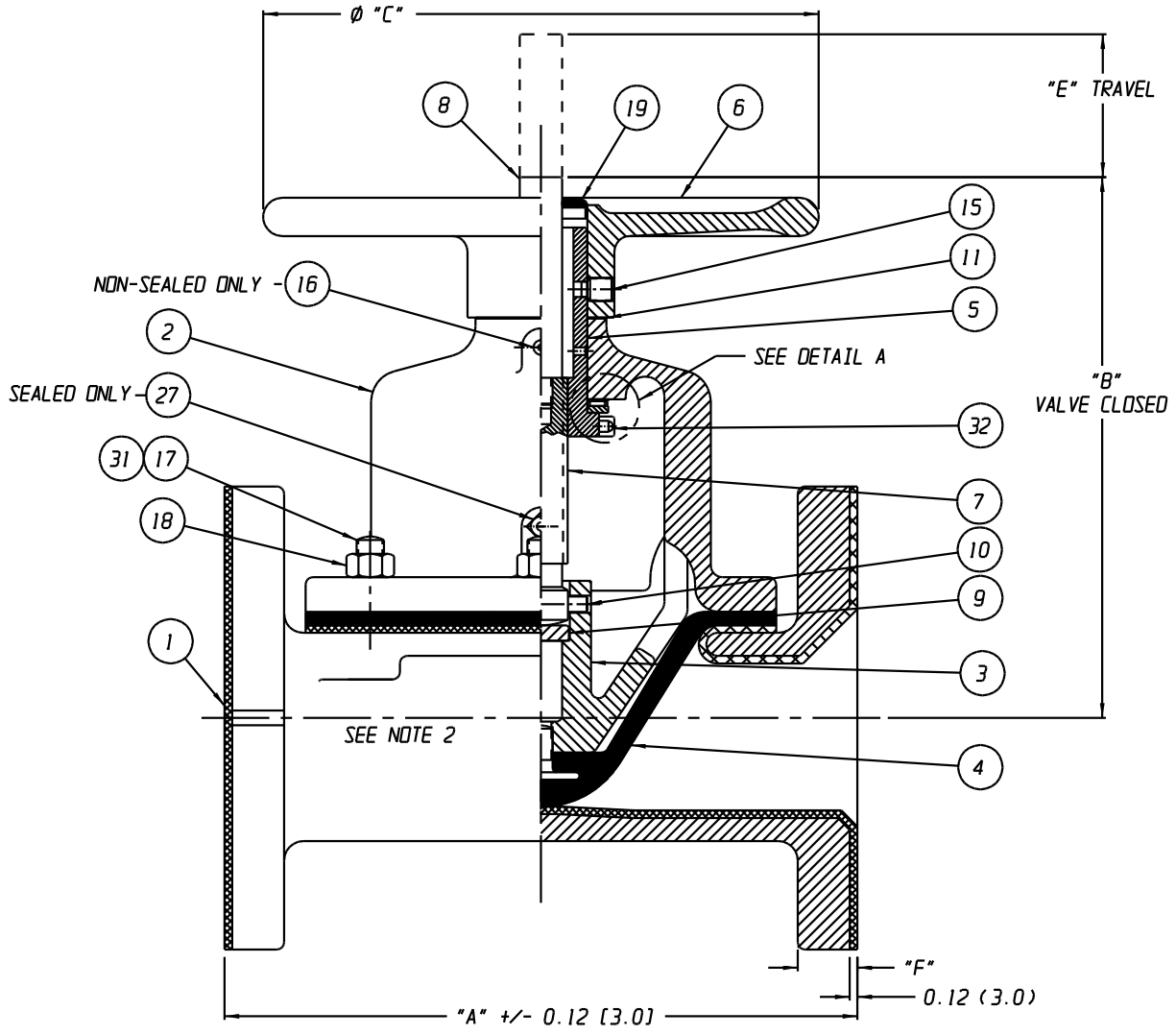
SEALED INDICATING TYPE
 FURNISHED



DETAIL A
 SCALE 2:1
 FOR 2.50 & 3.00 VALVE ONLY
 FURNISHED



DETAIL A
 FOR 4.00 VALVE ONLY
 FURNISHED



2.50 - 3.00 FLANGED END DETAIL
 4.00 FLANGED END DETAIL

LIST OF PARTS

| ITEM | DESCRIPTION | MATERIAL | QTY. |
|------|--------------------------------|----------------------------|------|
| 1 | BODY - FLANGED RUBBER LINED | C.I. A-126, CL. B | 1 |
| 2 | BONNET | C.I. A-126, CL. B | 1 |
| 3 | COMPRESSOR | C.I. | 1 |
| * 4 | DIAPHRAGM | - | 1 |
| 5 | BUSHING NON-SEALED | BRASS | 1 |
| 6 | HANDWHEEL | C.I. A-48, CL. 30 | 1 |
| 7 | SPINDLE, VALVE | CAR. STL. A-108, GR. 12L14 | 1 |
| 8 | EXTENSION, SPINDLE INDICATING | STN. STL. A-582, TYPE 303 | 1 |
| 9 | INSERT | CAR. STL. A-108, GR. 12L14 | 1 |
| 10 | PIN SPIROL | STN. STL. TYPE 302 | AR |
| 11 | WASHER, SHIM | POLYETHYLENE | AR |
| 12 | BEARING, THRUST NEEDLE | CAR. STL. | 1 |
| 13 | BEARING, THRUST RACE | CAR. STL. | 1 |
| 14 | WASHER, THRUST | CAR. STL. | 1 |
| 15 | SCREW, SET HEX. SOC. | ALLOY STEEL F-912 | 2 |
| 16 | FITTING, LUBE | - | 1 |
| 17 | STUD | CAR. STL. A-307 | AR |
| 18 | NUT, HEX. | CAR. STL. A-563, GR. A | AR |
| 19 | CAPSEAL | BRASS B-36, C26000 | 1 |
| 20 | LOCKNUT, HEX. | STN. STL. | 1 |
| 21 | EXTENSION, SPINDLE ADJ. TRAVEL | STN. STL. A-582, TYPE 303 | 1 |
| 22 | SPACER | STN. STL. A-582, TYPE 303 | 1 |
| 23 | COLLAR, SEAL | BRASS B-16, C36000 H02 | 1 |
| * 24 | O-RING (SEE TABLE COLUMN "J") | BUNA-N | 1 |
| 25 | BUSHING SEALED | BRASS | 1 |
| * 26 | O-RING (SEE TABLE COLUMN "K") | BUNA-N | 1 |
| 27 | PLUG, V-NOTCH VENT | STN. STL. TYPE 304 | 1 |
| * 28 | O-RING (SEE TABLE COLUMN "L") | BUNA-N | 1 |
| 29 | BEARING, THRUST BALL | CAR. STL. | 1 |
| 30 | COLLAR, STOP | C.I. A-126, CL. B | 1 |
| ▲ 31 | SCREW, HEX HD CAP | CAR. STL. A-307 | 4 |
| ● 32 | PIN, SPIROL | STN. STL. TYPE 302 | 1 |

* RECOMMENDED SPARE PARTS

- NOTES:
 ▲ 1. USED WITH 2.50" VALVE ONLY.
 2. VALVE IS BI-DIRECTIONAL (NO FLOW ARROW).
 ● 3. USED WITH 2.50" & 3.00" ONLY.

| SIZE | "A" | "B" | "C" | "D" | "E" | "F" | "G" | "H" | "J" | "K" | "L" |
|-------|------------------|------------------|------------------|------------------|----------------|----------------|-----------------|-----------------|-----|-----|-----|
| 02.50 | 8.75 [222.2] | 8.94 [227.1] | 9.00 [228.6] | 10.13 [257.3] | 2.00 [50.8] | 0.84 [21.3] | 5.50 [139.7] | 7.00 [177.8] | 115 | 222 | 122 |
| 03.00 | 10.25 [260.4] | 8.75 [222.3] | 9.00 [228.6] | 9.94 [252.5] | 2.31 [58.7] | 0.92 [23.4] | 6.00 [157.4] | 7.50 [190.5] | 115 | 222 | 122 |
| 04.00 | 12.75 [323.8] | 11.10 [281.9] | 10.00 [254.0] | 12.35 [313.7] | 2.81 [71.4] | 1.11 [28.2] | 7.50 [190.5] | 9.00 [228.6] | 116 | 326 | 124 |

UNLESS OTHERWISE SPECIFIED, DIMENSIONS NOT SHOWN IN BRACKETS () ARE IN INCHES. DIMENSIONS SHOWN IN BRACKETS () ARE IN MILLIMETERS.

| | | | | | |
|-----------------------|---------|---|----------|-----|--------------------------------------|
| ENGRD VALVES ORDER: - | ITEM: - | THIRD ANGLE PROJECTION | DATE | BY | VALVE ASSEMBLY |
| FIGURE NO.: - | | | 02/20/09 | DJS | STARIGHTWAY |
| CUSTOMER: - | | | 02/20/09 | STD | 02.50, 03.00 & 04.00 |
| CUSTOMER P.O.: - | | | 02/20/09 | STD | FLANGED - RUBBER LINED |
| | | ALL DIMENSIONS SHOWN ON THIS DRAWING ARE FOR REFERENCE ONLY | | | HWD |
| | | | | | MASTER DWG: 003978-1/1/E IECN# 12400 |

ITT
 Engineered Valves
 www.engvalves.com

000000-000
 SHEET 1 OF 1
 REV -

ISSUED BY: -
 CERT BY: -