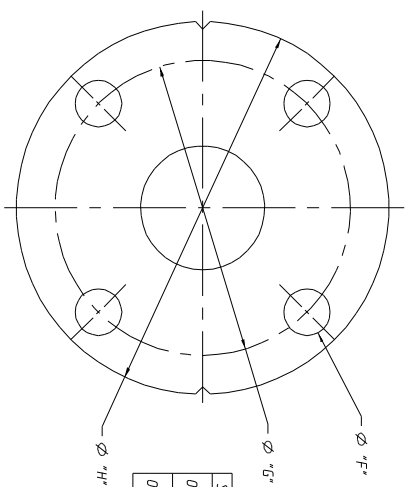


LIST OF PARTS

ITEM	DESCRIPTION	MATERIAL	QTY.
1	BODY, FLANGED - RUBBER LINED	C.I. A-126, CL. B	1
2	BONNET	C.I. A-126, CL. B	1
3	COMPRESSOR	C.I. A-126, CL. B	1
* 4	DIAPHRAGM	-	1
5	BUSHING, NON-SEALED	BRASS B-21, GR. C48500	1
6	HANDWHEEL	C.I. A-48, CL. 30	1
7	SPINDLE, VALVE	CAR. STL. A-108, GR. 12L14	1
8	EXTENSION, SPINDLE INDICATING	STN. STL. A-582, TYPE 303	1
9	INSERT	CAR. STL. A-108, GR. 12L14	1
10	PIN, SPIRDL	STN. STL. TYPE 302	1
11	WASHER, SHIM	POLYETHYLENE	AR
12	BEARING, THRUST NEEDLE	CAR. STL.	1
13	BEARING, THRUST RACE	CAR. STL.	2
14	SCREW, SET HEX. SOC.	ALLOY STEEL F-912	2
15	FITTING, LUBE	-	1
16	SCREW, HEX HD. CAP	CAR. STL. A-307	4
17	NUT, HEX.	CAR. STL. A-563, GR. A	4
18	CAPSEAL	BRASS B-36, ALLOY C26000	1
19	LOCKNUT, HEX.	STN. STL.	1
20	EXTENSION, SPINDLE ADJ. TRAVEL	STN. STL. A-582, TYPE 303	1
21	SPACER	STN. STL. A-582, TYPE 303	1
22	COLLAR, SEAL	BRASS B-16, C36000 HD2	1
* 23	O-RING DASH ND. 111	BUANA	1
24	BUSHING	BRASS B-21, GR. C48500	1
* 25	O-RING DASH ND. 216	BUANA	1
26	PLUG, V-NOTCH VENT 1/8" NPT	STN. STL. TYPE 304	1
* 27	O-RING DASH ND. 020	BUANA	1
28	SPACER	STL. A-108, GR. 12L14	1
29	PIN, SPIRDL	STN. STL. TYPE 302	1



\* RECOMMENDED SPARE PARTS

SIZE	1 <sup>e</sup>	1 <sup>b</sup>	1 <sup>c</sup>	1 <sup>d</sup>	1 <sup>e</sup>	1 <sup>f</sup>	1 <sup>g</sup>	1 <sup>h</sup>	1 <sup>j</sup>
01.50	6.75 [171.41]	6.28 [159.51]	7.21 [183.11]	1.25 [31.81]	0.62 [15.71]	3.88 [98.6]	5.00 [127.0]	0.71 [18.0]	0.78 [19.8]
02.00	7.75 [196.91]	7.28 [184.91]	8.21 [208.51]	1.88 [47.81]	0.75 [19.11]	4.75 [120.71]	6.00 [152.4]	0.78 [19.8]	0.78 [19.8]

NOTES:  
1. VALVE IS BI-DIRECTIONAL (NO FLOW ARROW).

UNLESS OTHERWISE SPECIFIED, DIMENSIONS NOT SHOWN IN BRACKETS ( ) ARE IN INCHES. DIMENSIONS SHOWN IN BRACKETS ( ) ARE IN MILLIMETERS.

ENG'G VALVES ORDER: - ITEM: -

FIGURE NO.: -

CUSTOMER: -

CUSTOMER P.O.: -

THIRD ANGLE PROJECTION

ALL DIMENSIONS SHOWN ON THIS DRAWING ARE FOR REFERENCE ONLY.

CHKD	10/20/14	STD	-
DATE	10/20/14	BY	VALVE ASSEMBLY
DATE	10/20/14	BY	STRAIGHTWAY 01.50 & 02.00
DATE	10/20/14	BY	FLANGED RUBBER LINED
DATE	10/20/14	BY	HMD

MASTER DWG: 004702-1/170 IENW 15829 ISSUED BY: -

TECH BY: -

**ITT**
  
 Engineered Valves

000000-000 SHEET REV 1 OF 1