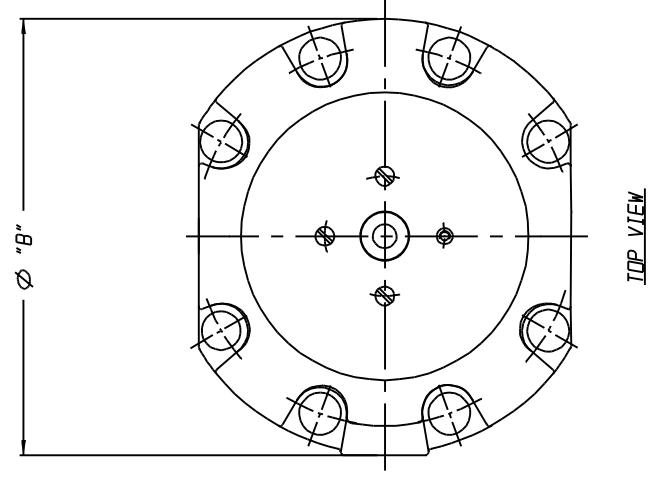
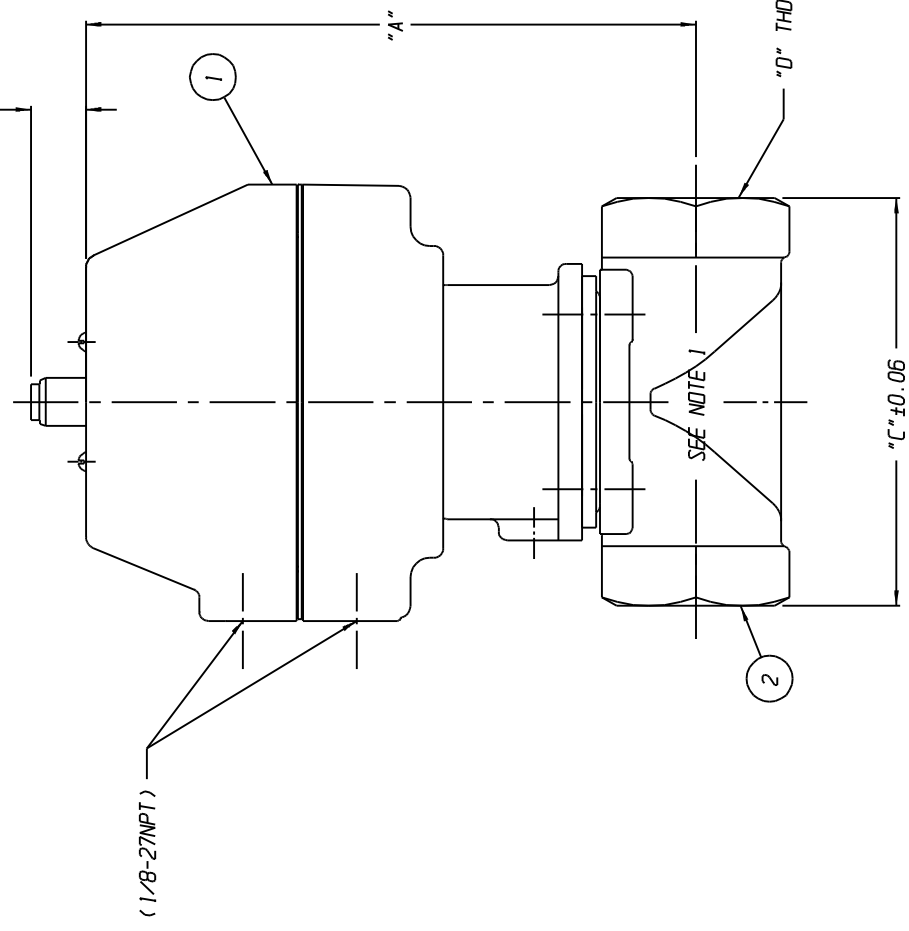


LIST OF PARTS

ITEM	DESCRIPTION	MATERIAL	QTY.
1	ASSEMBLY, ADVANTAGE ACTUATOR	PLASTIC	1
2	BODY, SCREWED	BRONZE	1

BODY SIZE	ACTR SIZE	"A"	"B" DIA	"C"	"D"	"E"
00.50	05	4.92 [125.0]	3.00 [76.2]	2.50 [63.5]	0.50 NPT	0.33 [8.4]
00.50	08	5.57 [141.5]	4.53 [115.1]	2.50 [63.5]	0.50 NPT	0.28 [7.1]
00.75	08	5.97 [151.6]	4.53 [115.1]	3.25 [82.6]	0.75 NPT	0.41 [10.4]
01.00	08	6.43 [163.3]	4.53 [115.1]	4.25 [108.0]	1.00 NPT	0.61 [15.5]
01.00	16	9.32 [236.7]	6.31 [160.3]	4.25 [108.0]	1.00 NPT	0.53 [13.5]
01.25	16	10.18 [258.6]	6.31 [160.3]	5.50 [139.7]	1.25 NPT	0.86 [21.8]
01.50	16				1.50 NPT	
* 02.00	16 DR	10.67 [271.0]	6.31 [160.3]	6.50 [160.3]	2.00 NPT	0.88 [22.4]
* 02.00	16 DB, RV					1.12 [28.4]

NOTES:
 1. VALVE IS BT-DIRECTIONAL (NO FLOW ARROW).
 * 2. STROKE OF 02.00 VALVE WITH DIRECT ACTING (A116) IS REDUCED TO 0.88 [22.4]. ALL OTHER 02.00 VALVES HAVE STANDARD 1.12 [28.4] STROKE.



UNLESS OTHERWISE SPECIFIED, DIMENSIONS NOT SHOWN IN BRACKETS [] ARE IN INCHES. DIMENSIONS SHOWN IN BRACKETS [] ARE IN MILLIMETERS.

ENGRD VALVES ORDER: - ITEM: -

FIGURE NO.: -

CUSTOMER: -

CUSTOMER P.O.: -

THIRD ANGLE PROJECTION	DATE	BY	STANDARDS
	DWN 01/28/15	DJS	WEIR 00.50 THRU 02.00
	CHKD 01/28/15	STD	SERIES 05-16
	APVD 01/28/15	STD	ADVANTAGE ACT, SST BONNET
			SCREWED ENDS

ALL DIMENSIONS SHOWN ON THIS DRAWING ARE FOR REFERENCE ONLY.

		ENGINEERED VALVES WWW.ENGINEEREDVALVES.COM
D	000000-000	SHEET 1 OF 1
		REV -
		ISSUED BY: -
		ECN# 15734
		MASTER DWG: 006212-1/17/B
		CERT BY: -