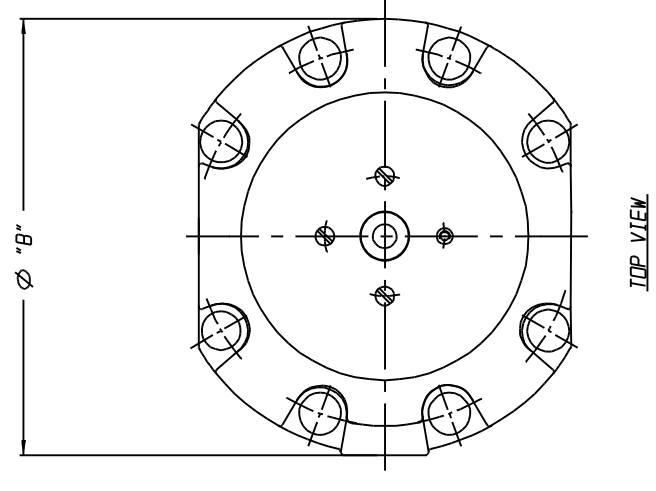
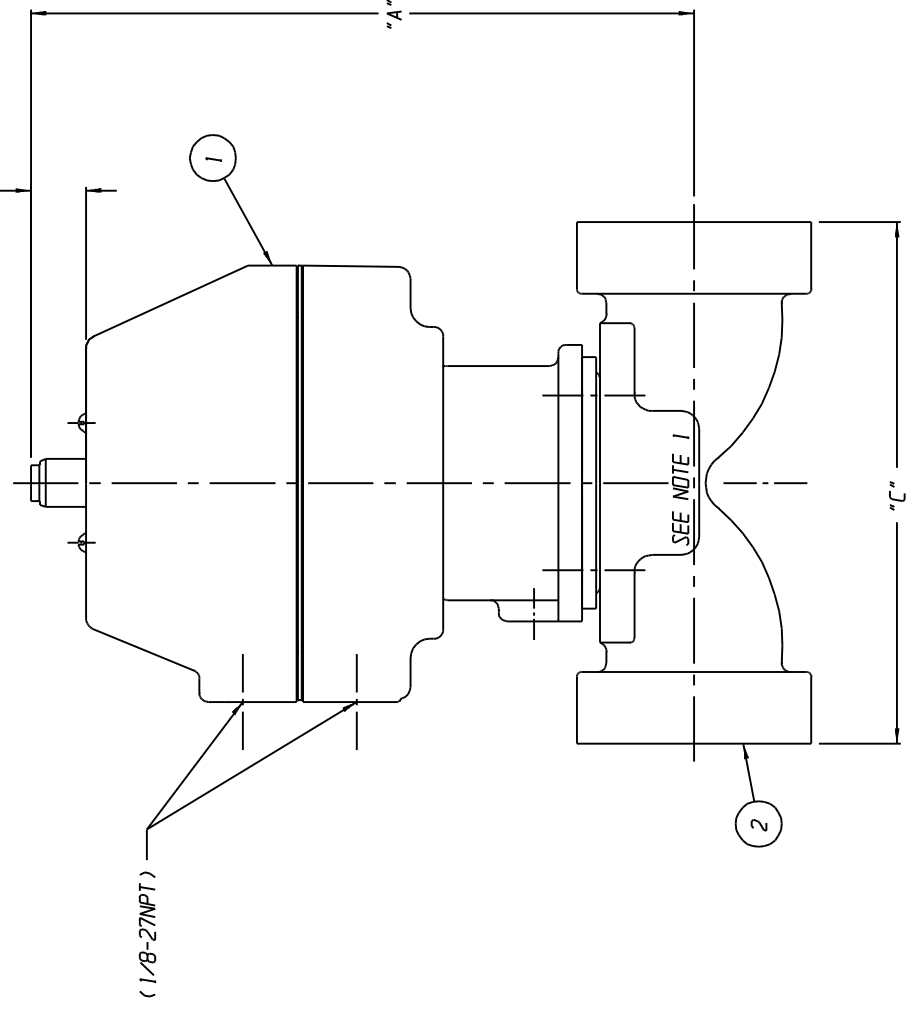


LIST OF PARTS			
ITEM	DESCRIPTION	MATERIAL	QTY.
1	ASSEMBLY, ADVANTAGE ACTUATOR	PLASTIC	1
2	BODY, SOCKET WELD	-	1

BODY SIZE	ACTR SIZE	"A"	"B" DIA	"C"	"D"
00.50	05	4.80 [121.9]	3.00 [76.2]	3.56 [90.4] 3.44 [87.4]	0.33 [8.4] 0.28 [7.1]
00.50	08	5.45 [138.4]	4.53 [115.1]	4.06 [103.1] 3.94 [100.1]	0.41 [10.4]
00.75	08	5.79 [147.1]	4.53 [115.1]	4.06 [103.1] 3.94 [100.1]	0.41 [10.4]
01.00	08	6.18 [157.0]	4.53 [115.1]	4.56 [115.8] 4.44 [112.8]	0.61 [15.5] 0.53 [13.5]
01.00	16	9.07 [230.4]	6.31 [160.3]	4.56 [115.8] 4.44 [112.8]	0.53 [13.5]
01.25	16	9.84 [250.0]	6.31 [160.3]	6.56 [166.6] 6.44 [163.6]	0.86 [21.8]
01.50	16	10.29 [261.4]	6.31 [160.3]	7.31 [185.7] 7.19 [182.6]	0.88 [22.4] 1.12 [28.4]
* 02.00	16 DR				
* 02.00	16 DB, RV				

NOTES:
 1. VALVE IS BI-DIRECTIONAL (NO FLOW ARROW).
 * 2. STROKE OF 02.00 VALVE WITH DIRECT ACTING (A116) IS REDUCED TO 0.88 [22.4]. ALL OTHER 02.00 VALVES HAVE STANDARD 1.12 [28.4] STROKE.



UNLESS OTHERWISE SPECIFIED, DIMENSIONS NOT SHOWN IN BRACKETS [] ARE IN INCHES. DIMENSIONS SHOWN IN BRACKETS [] ARE IN MILLIMETERS.

ENGRD VALVES ORDER: - ITEM: -
 FIGURE NO.: -
 CUSTOMER: -
 CUSTOMER P.O.: -

THIRD ANGLE PROJECTION

DATE BY STANDARDS
 DWN 01/29/15 DJS WEIR 00.50 THRU 02.00
 CHKD 01/29/15 STD ADVANTAGE ACT, SST BONNET
 APVD 01/29/15 STD SOCKET WELD ENDS

ALL DIMENSIONS SHOWN ON THIS DRAWING ARE FOR REFERENCE ONLY

MASTER DWG: 009261-1/1/A ECN# 15734 ISSUED BY: - CERT BY: -

ITV
 Engineered Valves
 www.engvalves.com

D 000000-000 SHEET 1 OF 1 REV -