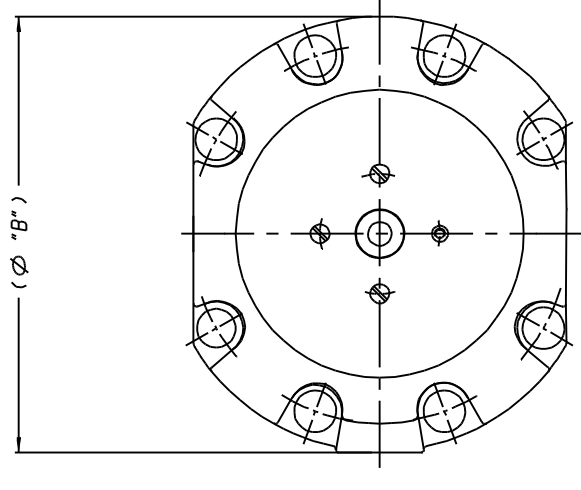
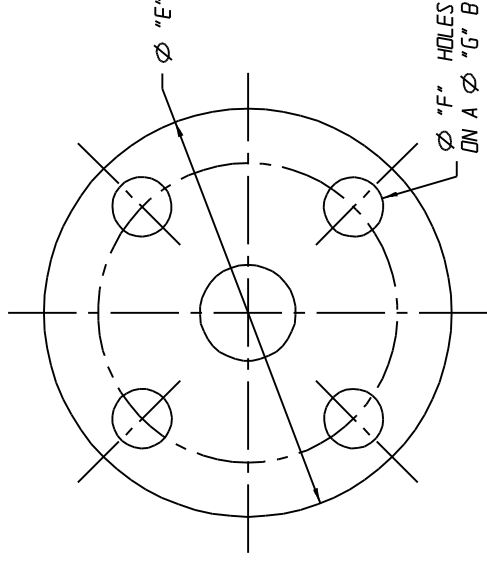
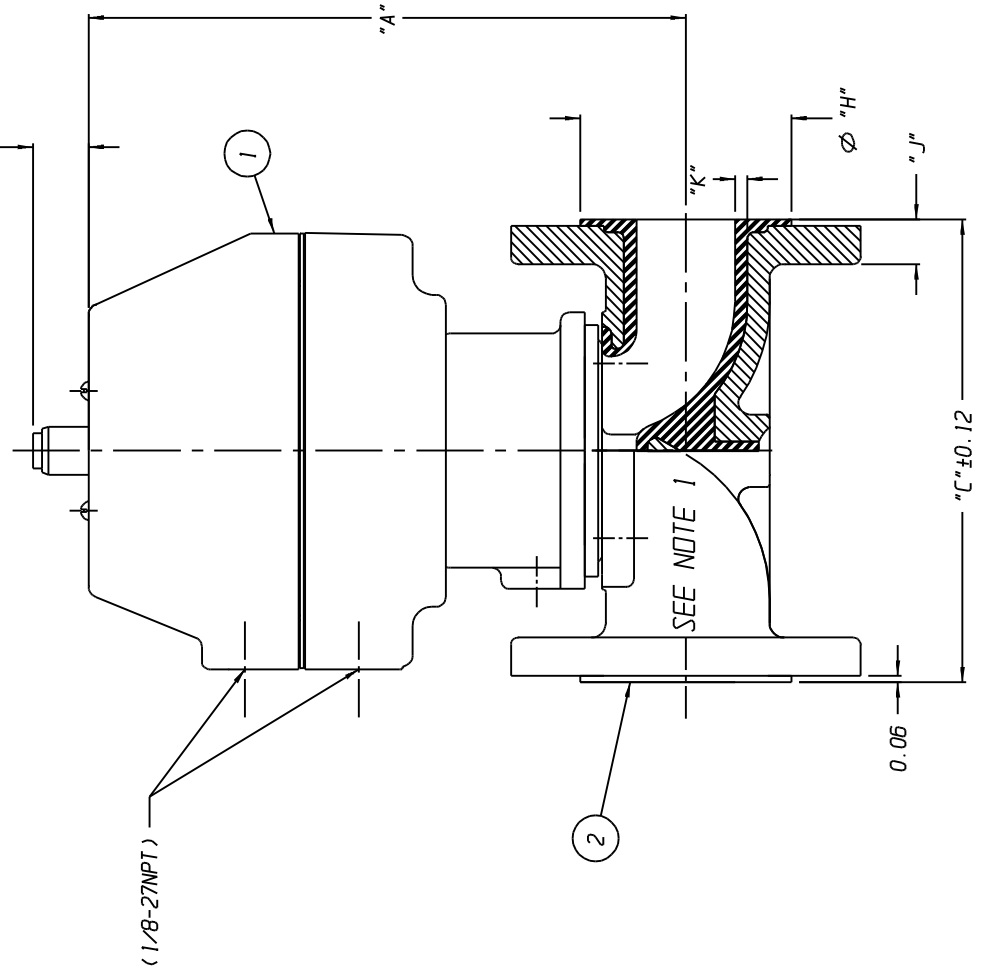


LIST OF PARTS		
ITEM	DESCRIPTION	MATERIAL
1	ASSEMBLY ADVANTAGE ACTUATOR	PLASTIC
2	BODY, FLANGED	CI, PLASTIC LINED

VALVE SIZE	ACTR. SIZE	"A"	"B" DIA	"C"	"D"	"E"	"F" DIA	"G"	"H"	"J"	"K"
00.75	08	6.37 [161.8]	4.53 [115.1]	5.75 [146.1]	0.61 [15.5]	4.25 [107.9]	0.500-13 UNC-2B	2.75 [69.9]	1.69 [42.9]	0.53 [13.5]	0.19 [4.8]
01.00		9.26 [235.2]	6.31 [160.3]	5.75 [146.1]	0.53 [13.5]	4.25 [107.9]	0.62 [15.7]	3.12 [79.3]	2.00 [50.8]	0.53 [13.5]	0.19 [4.8]
00.75	16	10.06 [255.5]	6.31 [160.3]	6.88 [174.8]	0.86 [21.8]	5.00 [127.0]	0.500-13 UNC-2B	3.50 [88.9]	2.88 [73.2]	0.65 [16.5]	0.20 [5.1]
01.00		10.41 [264.4]	6.31 [160.3]	7.88 [200.2]	1.12 [28.4]	6.00 [152.4]	0.62 [15.7]	3.88 [98.6]	3.62 [92.0]	0.72 [18.3]	0.22 [5.6]
* 02.00	16 DR										
* 02.00	16 DB, RV										

NOTES:
 1. VALVE IS BI-DIRECTIONAL (NO FLOW ARROW).
 * 2. STROKE OF 02.00 VALVE WITH DIRECT ACTING (A116) IS REDUCED TO 0.88 [22.4]. ALL OTHER 02.00 VALVES HAVE STANDARD 1.12 [28.4] STROKE.



Ø "E" HOLES OR "F" THREAD ON A Ø "G" B.C.

TOP VIEW

UNLESS OTHERWISE SPECIFIED, DIMENSIONS NOT SHOWN IN BRACKETS [] ARE IN INCHES. DIMENSIONS SHOWN IN BRACKETS [] ARE IN MILLIMETERS.

ENGRD VALVES ORDER: - ITEM: -
 FIGURE NO.: -
 CUSTOMER: -
 CUSTOMER P.O.: -

THIRD ANGLE PROJECTION	DATE	BY	VALVE OUTLINE
	DWN 01/29/15	DJS	WEIR 00.50 THRU 02.00 ADVANTAGE ACTR SERIES 05-16
	CHKD 01/29/15	STD	STN STL BONNET BODY W/ FLANGED ENDS
	APVD 01/29/15	STD	PLASTIC LINED

MASTER DWG: 008416-1/1/A	ECON# 15734	ISSUED BY: -	CERT BY: -

ITV
 Engineered Valves
 www.itvalves.com

SHEET	REV
D	000000-000
1	OF 1