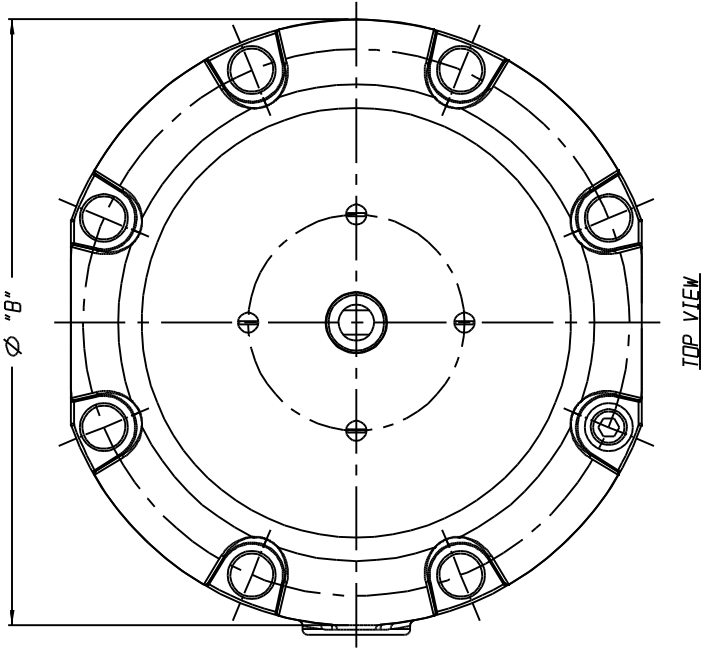
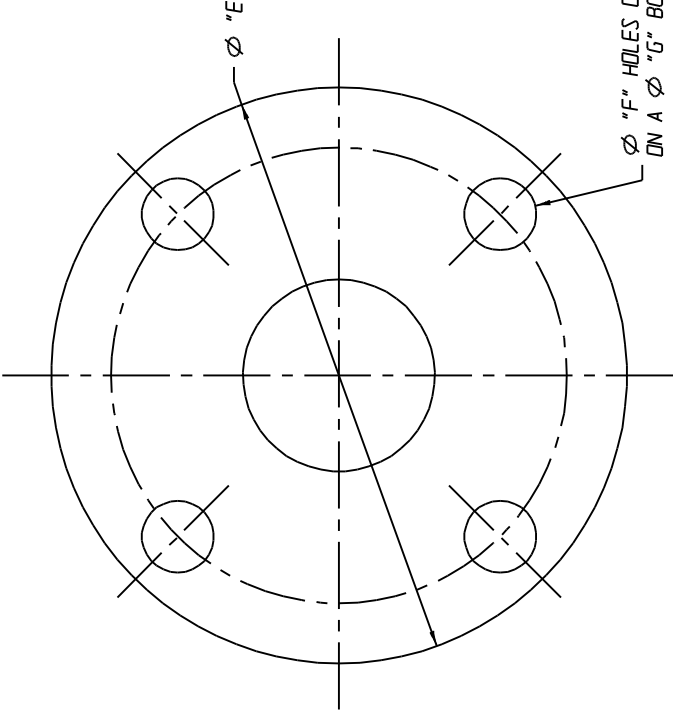
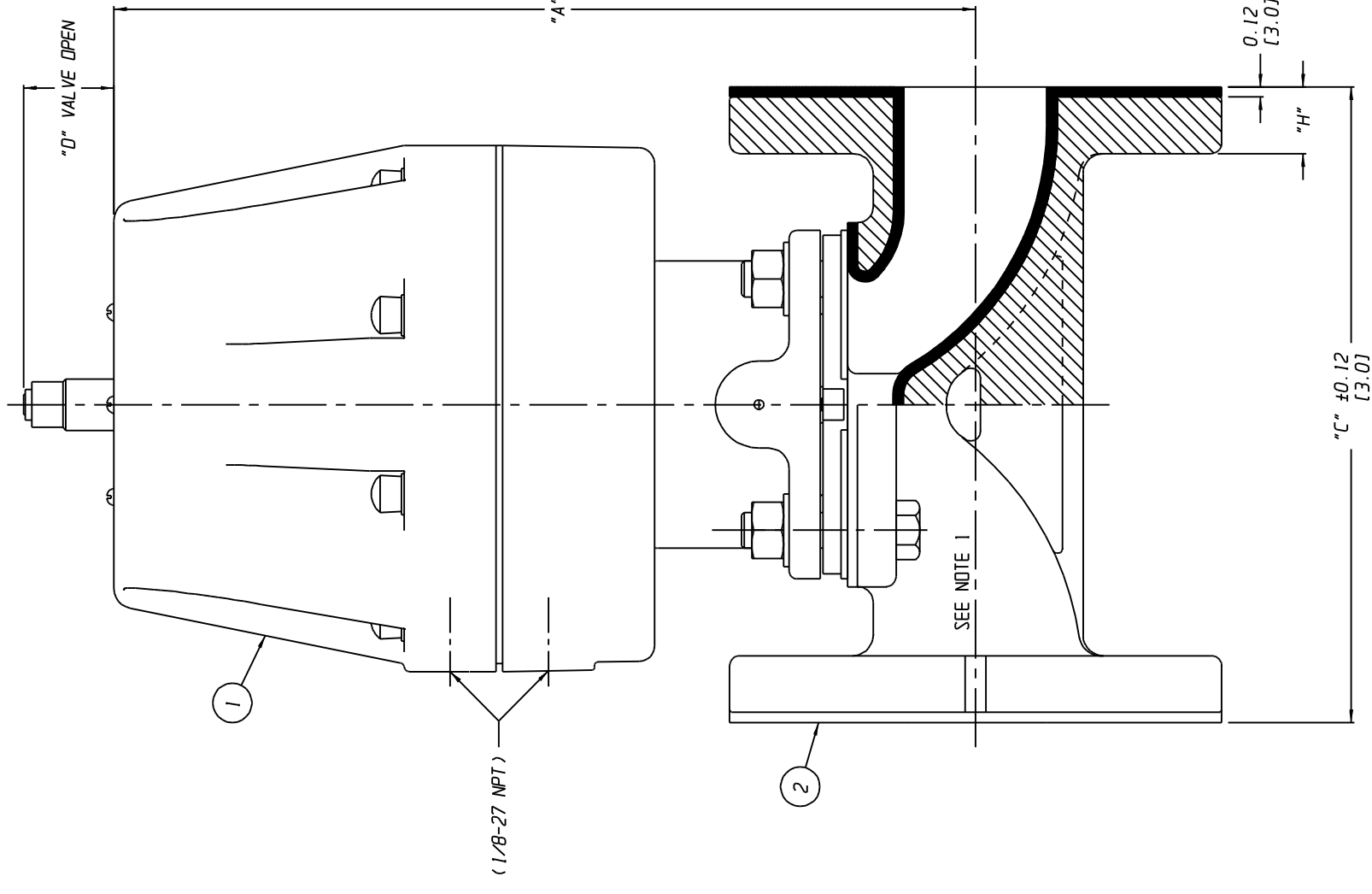


LIST OF PARTS			
ITEM	DESCRIPTION	MATERIAL	QTY.
1	ASSEMBLY ADVANTAGE ACTUATOR	PLASTIC	1
2	BODY, FLANGED RUBBER LINED	-	1

VALVE SIZE	ACTR. SIZE	"A"	"B" DIA	"C"	"D"	"E"	"F" DIA	"G"	"H"
00.50	05	4.95 [125.7]	3.00 [76.2]	4.25 [108.0]	0.33 [8.4]	3.50 [88.9]	0.62 [15.7]	2.38 [60.5]	
00.50	08	5.57 [141.5]	4.53 [115.1]	4.25 [108.0]	0.28 [7.1]	3.50 [88.9]	0.62 [15.7]	2.38 [60.5]	
00.75	08	6.36 [161.5]	4.53 [115.1]	5.75 [146.1]	0.61 [15.5]	4.25 [108.0]	0.500-13 UNC-28 [15.7]	2.75 [69.9]	0.59 [15.0]
01.00	16	9.25 [235.0]	6.31 [160.3]	5.75 [146.1]	0.53 [13.5]	4.25 [108.0]	0.500-13 UNC-28 [15.7]	2.75 [69.9]	
01.25	16	10.11 [256.8]	6.31 [160.3]	6.75 [171.5]	0.86 [21.8]	5.00 [127.0]	0.62 [15.7]	3.50 [88.9]	0.74 [18.8]
01.50	16	10.66 [270.8]	6.31 [160.3]	7.75 [196.9]	0.88 [22.4]	6.00 [152.4]	0.75 [19.1]	4.75 [120.7]	0.78 [19.8]
* 02.00	16 DR								
* 02.00	16 DB,RV								

NOTES:  
 1. VALVE IS BI-DIRECTIONAL (NO FLOW ARROW).  
 \* 2. STROKE OF 02.00 VALVE WITH DIRECT ACTING (A116) IS REDUCED TO 0.88 [22.4]. ALL OTHER 02.00 VALVES HAVE STANDARD 1.12 [28.4] STROKE.



UNLESS OTHERWISE SPECIFIED, DIMENSIONS NOT SHOWN IN BRACKETS [ ] ARE IN INCHES. DIMENSIONS SHOWN IN BRACKETS [ ] ARE IN MILLIMETERS.

ENGRD VALVES ORDER: -	ITEM: -	DATE	BY	VALVE OUTLINE
FIGURE NO.: -		DWN 01/29/15	DJS	WEIR 00.50 THRU 02.00
CUSTOMER: -		CHKD 01/29/15	STD	ADVANTAGE ACTR SERIES 05-16
CUSTOMER P.O.: -		APVD 01/29/15	STD	STN STL BONNET
				BODY W/FLANGED ENDS
				RUBBER LINED
				MASTER DWG: 010013-1/1A
				ECN# 15734
				ISSUED BY: -
				CERT BY: -

ITT
   
 Engineered Valves
   
 www.ingvalves.com
   
 SHEET 1 OF 1
   
 REV -
   
 000000-000