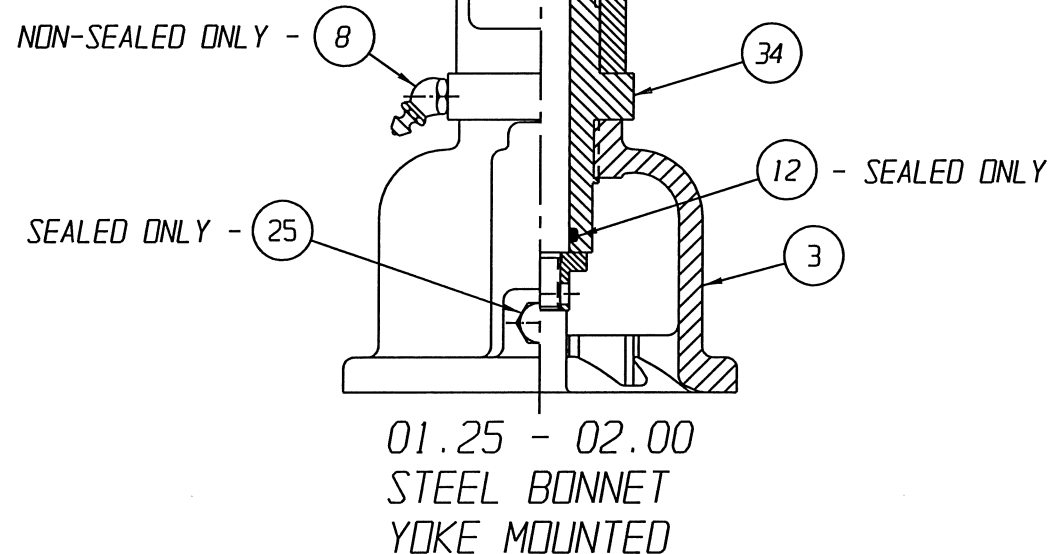
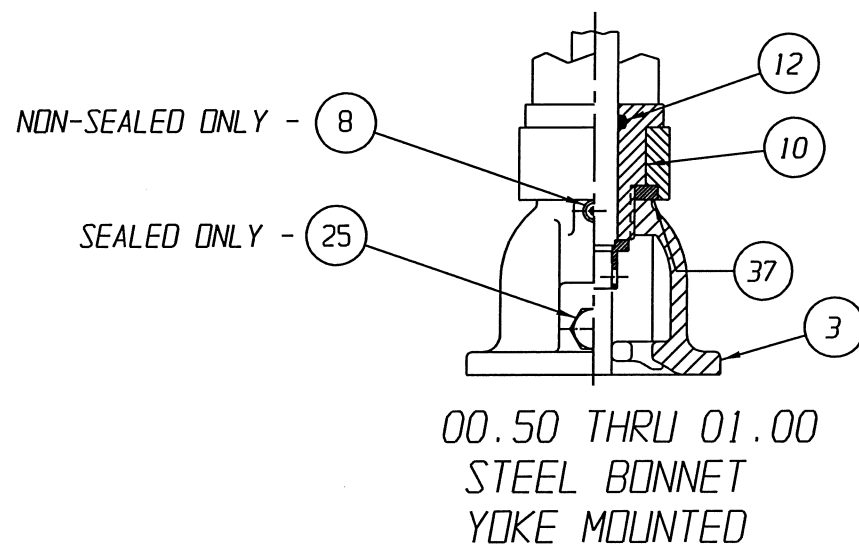
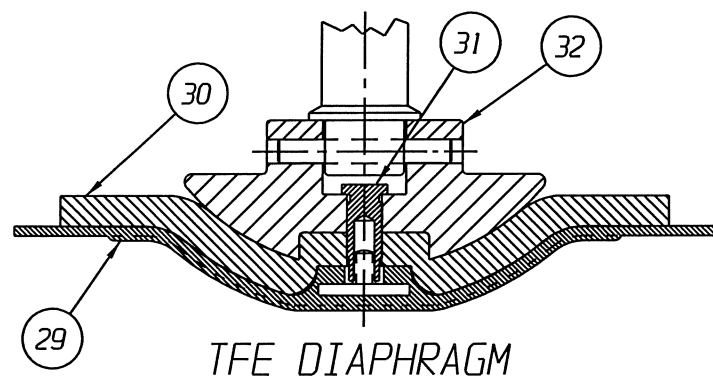


VALVE SIZE	'A'	'B'	'C'	'D'	'E'	'F'	'G'	O-RING
00.50	7.17 [182.1]	3.48 [88.5]	3.50 [88.9]	11.68 [296.7]	15.41 [391.4]	7.36 [186.9]	15.60 [396.2]	#112
00.75	7.72 [196.1]	4.03 [102.4]	4.00 [101.6]	12.07 [306.6]	15.76 [400.3]	7.91 [200.9]	15.95 [405.1]	
01.00	8.19 [208.0]	4.47 [113.5]	4.50 [114.3]	12.50 [317.5]	16.22 [412.0]	8.35 [212.1]	16.38 [416.1]	
01.25 & 01.50	9.51 [241.6]	5.78 [146.8]	6.50 [165.1]	14.31 [363.5]	18.04 [458.2]	9.67 [245.6]	18.20 [462.3]	#114
02.00	9.96 [253.0]	6.23 [158.2]	7.25 [184.1]	14.76 [374.9]	18.49 [469.6]	10.12 [257.0]	18.65 [473.7]	



LIST OF PARTS			
ITEM	DESCRIPTION	MATERIAL	QTY.
1	BODY, SOCKETWELD PIPE	-	1
* 2	DIAPHRAGM, ELASTOMER	-	1
3	BONNET, ADAPTER	-	1
4	HEX, CAP SCREWS OR STUDS	-	4
5	NUTS	-	4
6	COMPRESSOR, F/ ELASTOMER DIAPHRAGM	ZINC B-86	1
7	PIN, SPIROL	STN. STL. TYPE 302	1
8	FITTING, LUBE	-	1
9	SPINDLE, VALVE	STN. STL. A-582, TYPE 303	1
10	BUSHING, ADAPTER	BRASS	1
11	NUT, ADAPTER BUSHING	M.I. A-47, GR. 32510	1
* 12	O-RING 'SEE CHART'	BUNA-N	AR
13	COVER, LOWER	ALUMINUM B-85 52T SCB4A	1
* 14	DIAPHRAGM, AIR MOTOR	BUNA-N	1
15	COVER, UPPER	ALUMINUM B-85 52T SCB4A	1
16	PLATE, ACTUATOR	C.I. A-126, CL. B	2
17	NUT, HEX JAM	CAR. STL.	1
18	SCREW, HEX HD. CAP	CAR. STL.	12
19	NUT, HEX	CAR. STL.	12
20	SPINDLE, VALVE YOKE	STN. STL. A-582, TYPE 303	1
21	YOKE	D.I. A-395, GR. 60-40-18	1
22	COUPLING, HALF	STN. STL. A-351, GR. CF8	2
23	SCREW, HEX HD. CAP	CAR. STL.	2
24	NUT, HEX	CAR. STL.	2
25	PLUG, VENT	STN. STL. TYPE 416	1
26	SPINDLE, ACTUATOR	STN. STL. A-582, TYPE 302	1
27	PLATE, IDENTIFICATION	STN. STL. A-240, TYPE 304	1
28	SCREW, DRIVE TYPE U	CAR. STL. SAE GR. 2	4
* 29	DIAPHRAGM, PTFE	R2	1
30	CUSHION, BACKING	ELASTOMER	1
31	NUT, TUBE	BRASS B-16, C36000 H02	1
32	COMPRESSOR, F/ PLASTIC DIAPHRAGM	ZINC B-86	1
33	SPRING #88	STEEL	1
34	SPRING #89	STEEL	1
35	BUSHING, ADAPTER	CAR. STL. A-108, GR. 12L14	1
Δ 36	SPACER	CAR. STL.	1
▲ 37	SPACER, YOKE	BRASS	1
38	RING, RETAINING	STEEL	1
39	ROD, INDICATING	STN. STL. 18-8	1
40	SPRING, #99	STEEL	1
41	CAP	PLASTIC	1
42	WASHER	NYLON	1

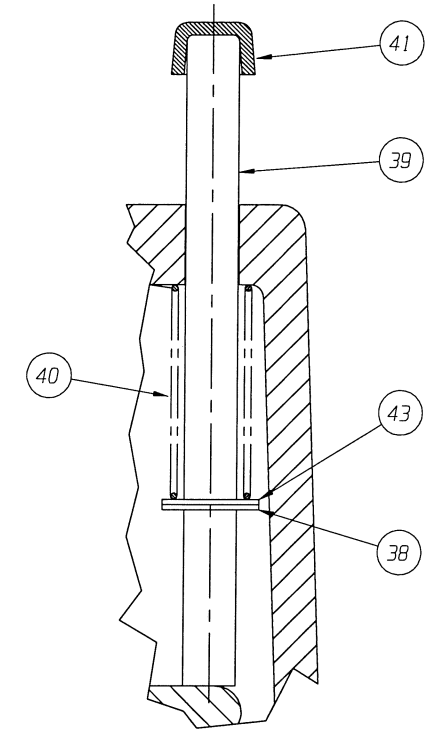
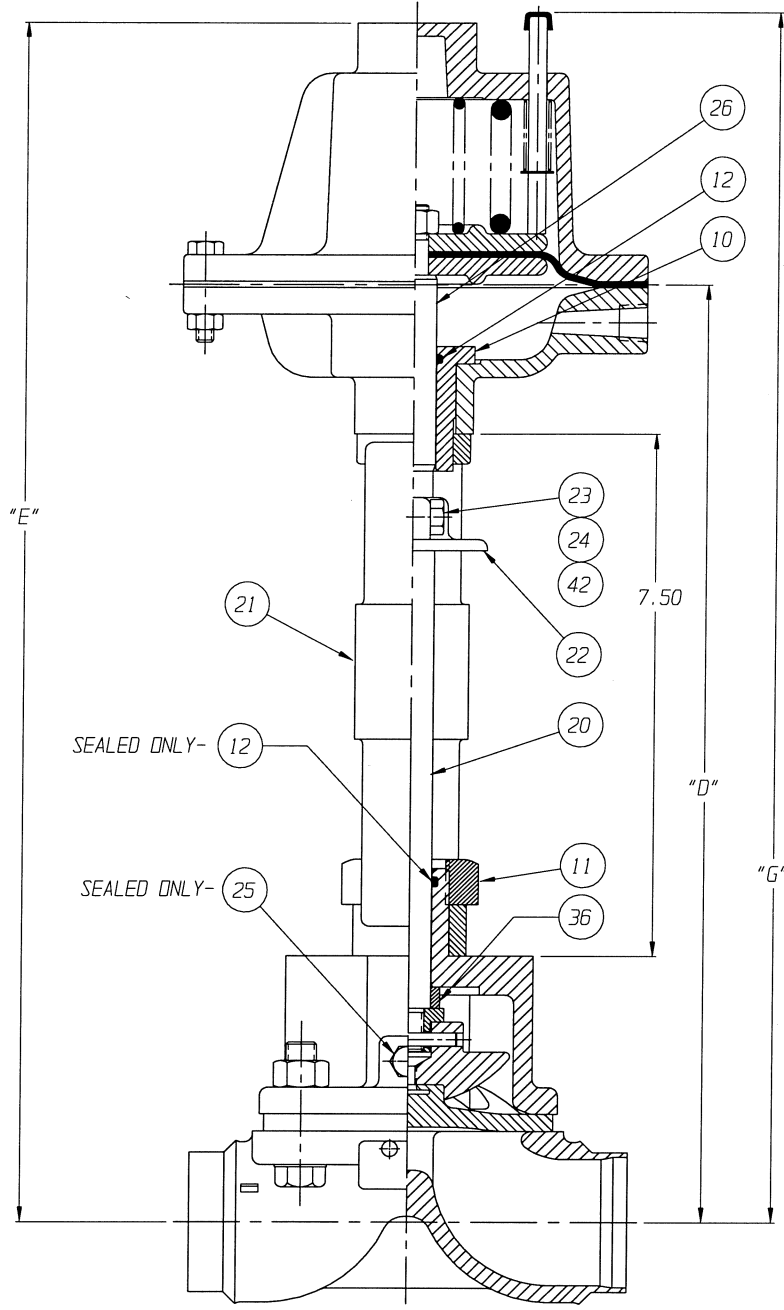
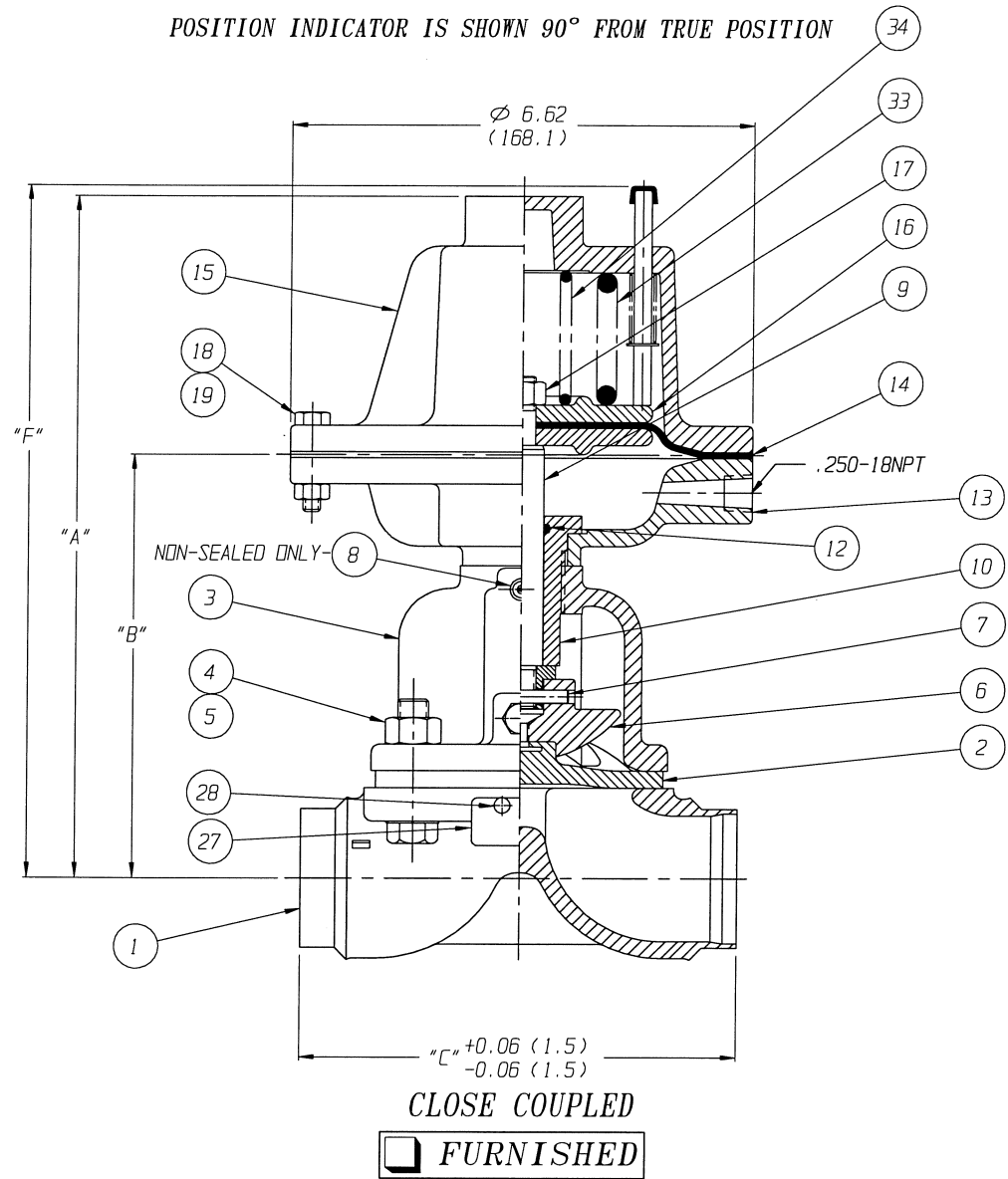
* RECOMMENDED SPARE PARTS

- NOTE:
- Δ 1. FOR USE WITH 01.25 THRU 02.00 VALVE ASSEMBLIES. ALSO VALVE TRAVEL WILL BE RESTRICTED TO 0.62.
 - ▲ 2. USED ONLY WITH 00.50" STN. STL. BONNET.
 - 3. VALVE IS BI-DIRECTIONAL (NO FLOW ARROW).

UNLESS OTHERWISE SPECIFIED, DIMENSIONS NOT SHOWN IN BRACKETS [] ARE IN INCHES. DIMENSIONS SHOWN IN BRACKETS [] ARE IN MILLIMETERS.

ENGRD VALVES ORDER: -	ITEM: -	THIRD ANGLE PROJECTION	DATE	BY	VALVE ASSEMBLY
FIGURE NO.: -			08/01/12	DJS	WEIR 00.50 THRU 02.00
CUSTOMER: -			08/01/12	STD	#12 REVERSE ACTUATOR
CUSTOMER P.O.: -			08/01/12	STD	WITH SOCKET WELD ENDS
			APVD	08/01/12	STD
			MASTER DWG: 004191-2/2/B		ECN# 14424
					ISSUED BY: -
					CERT BY: -

	Engineered Valves www.engvalves.com
D 000000-000	SHEET 1 OF 1
	REV -



DETAIL
POSITION INDICATOR
(OPTIONAL)

ENGRD VALVES ORDER: - ITEM: -
 SHEET - OF -
 FIGURE NO.: -
 CUSTOMER: -
 CUSTOMER P.O.: -
 ISSUED BY: - CERTIFIED BY: -

ECN# 6601

THIRD ANGLE PROJECTION		DATE	BY	VALVE ASSEMBLY WEIR 00.50 THRU 02.00 #12 REVERSE ACTUATOR WITH BUTTWELDED ENDS (TUBE)
	DWN	01-25-02	BLM	
	CHKD	01-25-02	STD	
	APVD	01-25-02	STD	
UNLESS OTHERWISE SPECIFIED, ALL DIMENSIONS ARE IN INCHES				ITT Industries Engineered Valves Lancaster, PA USA
		CS	D	004190 SHEET 1 OF 2
				REV B