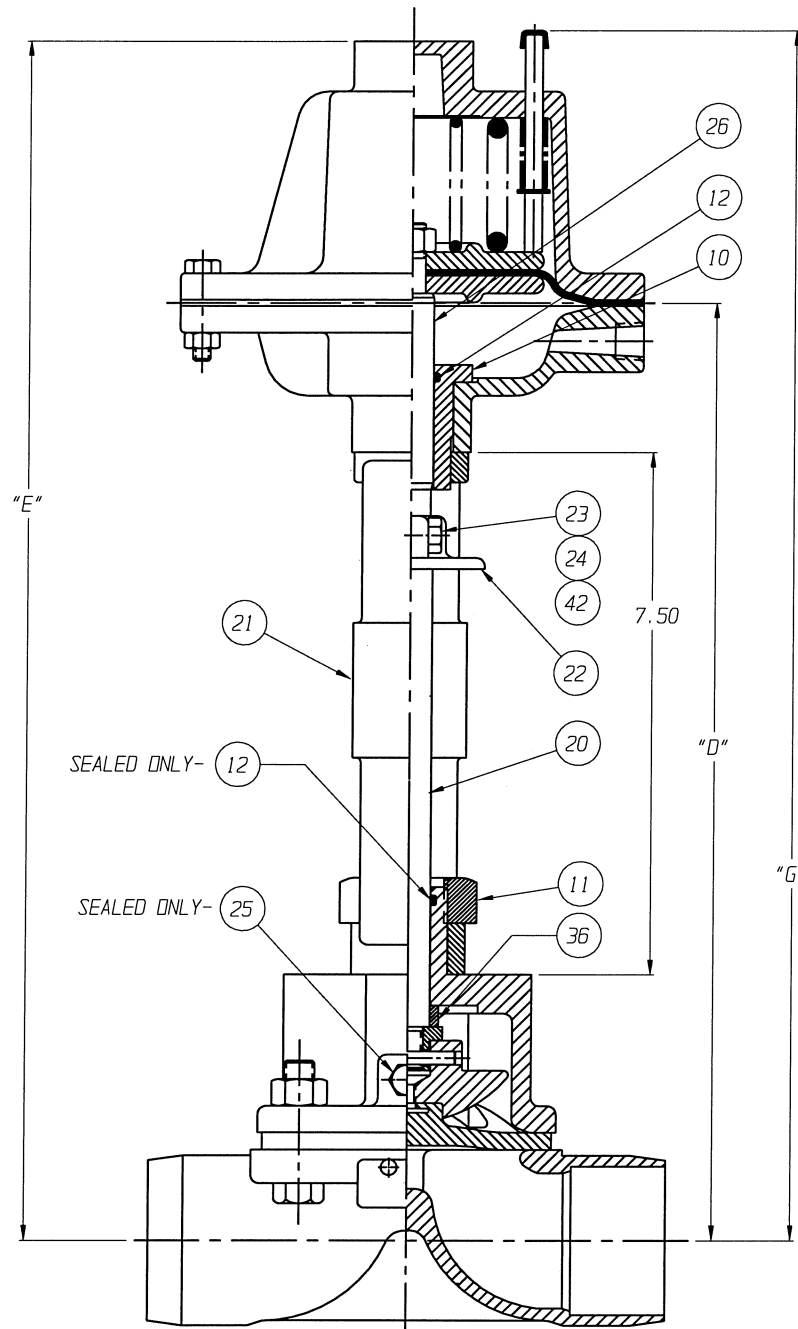


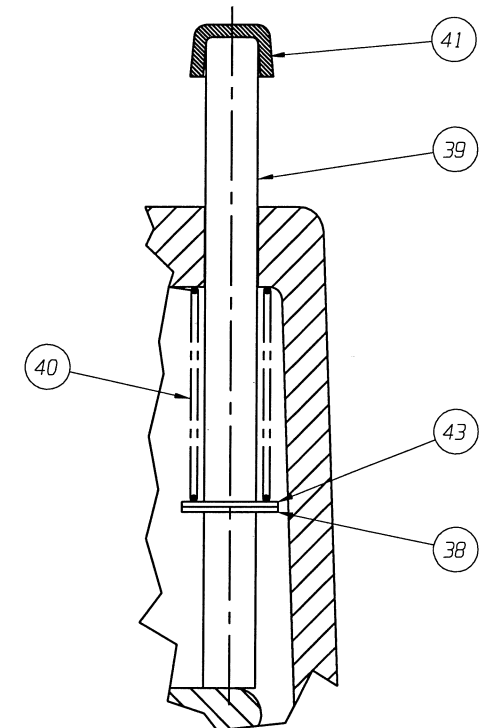
CLOSE COUPLED

FURNISHED



YOKE MOUNTED
IRON BONNET

FURNISHED



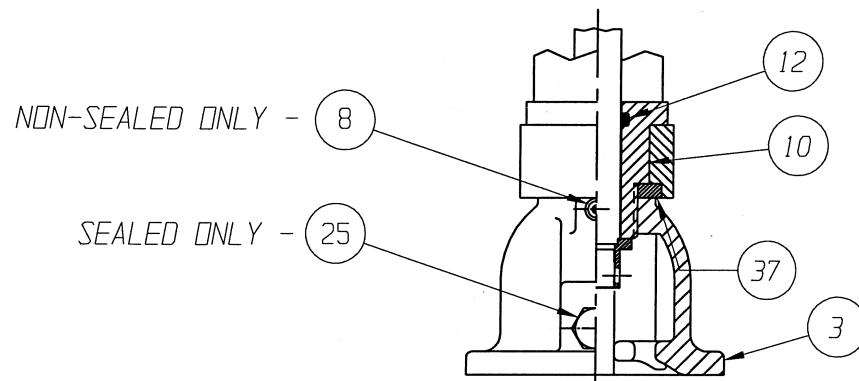
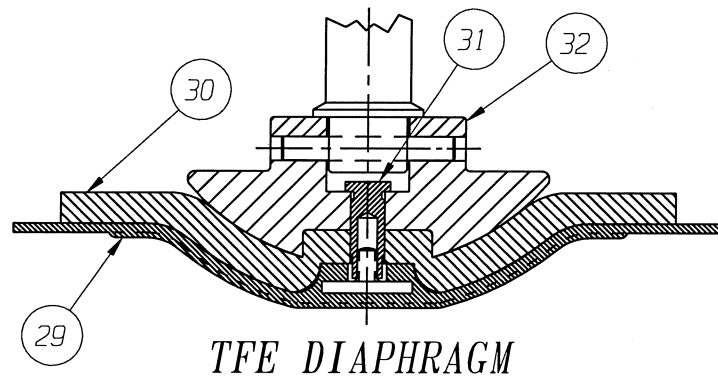
DETAIL
POSITION INDICATOR
(OPTIONAL)

ENGRD VALVES ORDER: - ITEM: -
SHEET - OF -
FIGURE NO.: -
CUSTOMER: -
CUSTOMER P.O.: -
ISSUED BY: CERTIFIED BY:

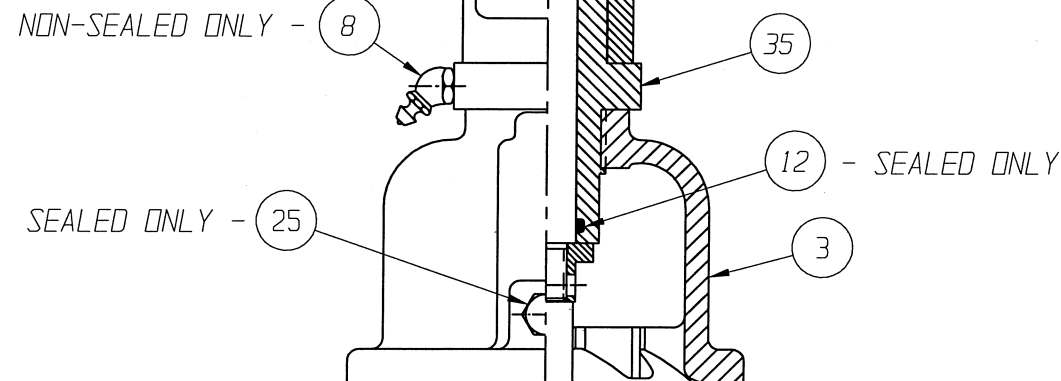
THIRD ANGLE PROJECTION		DATE	BY	VALVE ASSEMBLY WEIR 00.50 THRU 02.00 #12 REVERSE ACTUATOR WITH SOLDER ENDS	
	DWN	01-28-02	BLM		
	CHKD	01-28-02	STD		
	APVD	01-28-02	STD		
ECN# 6601	UNLESS OTHERWISE SPECIFIED, ALL DIMENSIONS ARE IN INCHES		CS D	004198 SHEET 1 OF 2	REV B

VALVE SIZE	'A'	'B'	'C'	'D'	'E'	'F'	'G'	O-RING
00.50	7.10 (180.3)	3.41 (86.7)	3.50 (88.9)	11.44 (290.7)	15.32 (389.1)	7.29 (185.2)	15.13 (384.3)	#112
00.75	7.73 (196.3)	4.04 (102.6)	4.12 (104.6)	12.07 (306.7)	15.95 (405.1)	7.92 (201.2)	15.76 (400.3)	
01.00	8.20 (208.3)	4.51 (114.7)	5.06 (128.5)	12.54 (318.6)	16.42 (417.1)	8.39 (213.1)	16.23 (412.2)	
01.25	9.32 (236.7)	5.63 (143.1)	5.88 (149.3)	13.66 (347.1)	17.54 (445.5)	9.51 (241.5)	17.35 (440.7)	#114
01.50	9.50 (241.3)	5.81 (147.7)	5.88 (149.3)	13.84 (351.2)	17.72 (450.1)	9.69 (246.1)	17.53 (445.3)	
02.00	9.95 (252.7)	6.26 (159.1)	7.38 (187.4)	14.29 (363.1)	18.17 (461.5)	10.14 (257.5)	17.98 (456.7)	

DIMENSIONS SHOWN IN () PARENTHESES ARE MILLIMETERS.



00.50 THRU 01.00
STEEL BONNET
YOKE MOUNTED



01.25 - 02.00
STEEL BONNET
YOKE MOUNTED

LIST OF PARTS			
ITEM	DESCRIPTION	MATERIAL	QTY.
1	BODY, SOLDER ENDS	-	1
* 2	DIAPHRAGM, ELASTOMER	-	1
3	BONNET, ADAPTER	-	1
4	HEX, CAP SCREWS OR STUDS	-	4
5	NUTS	-	4
6	COMPRESSOR, F/ ELASTOMER DIAPHRAGM	ZINC B-86	1
7	PIN, SPIROL	STN. STL. TYPE 302	1
8	FITTING, LUBE	-	1
9	SPINDLE, VALVE	STN. STL. A-582, TYPE 303	1
10	BUSHING, ADAPTER	-	1
11	NUT, HEAVY HEX. JAM	CAR. STL.	1
* 12	O-RING 'SEE CHART'	BUNA-N	AR
13	COVER, LOWER	ALUMINUM	1
* 14	DIAPHRAGM, AIR MOTOR	BUNA-N	1
15	COVER, UPPER	ALUMINUM	1
16	PLATE, ACTUATOR	ALUMINUM B-85, SC84A	2
17	NUT, HEX.	CAR. STL.	1
18	SCREW, HEX HD. CAP	CAR. STL.	12
19	NUT, HEX	CAR. STL.	12
20	SPINDLE, VALVE YOKE	STN. STL. A-582, TYPE 303	1
21	YOKE	D.I. A-395, GR. 60-40-18	1
22	COUPLING, HALF	STN. STL. A-351, GR. CF8	2
23	SCREW, HEX HD. CAP	CAR. STL.	2
24	NUT, HEX	CAR. STL.	2
25	PLUG, VENT	STN. STL. TYPE 304	1
26	SPINDLE, ACTUATOR	STN. STL. A-582, TYPE 302	1
27	PLATE, IDENTIFICATION	STN. STL. A-240, TYPE 304	1
28	SCREW, DRIVE TYPE U	CAR. STL. SAE GR. 2	4
* 29	DIAPHRAGM, PTFE	R2	1
* 30	CUSHION, BACKING	ELASTOMER	1
31	NUT, TUBE	BRASS B-16, C36000 H02	1
32	COMPRESSOR, F/ PLASTIC DIAPHRAGM	ZINC B-86	1
33	SPRING #88	STEEL	1
34	SPRING #89	STEEL	1
35	BUSHING, ADAPTER	CAR. STL. A-108, GR. 12L14	1
Δ 36	SPACER	CAR. STL.	1
▲ 37	SPACER, YOKE	BRASS	1
38	RING, RETAINING	STEEL	1
39	ROD, INDICATING	STN. STL. 18-8	1
40	SPRING, #99	STEEL	1
41	CAP	PLASTIC	1
42	WASHER, SPRINGLOCK	CAR. STL.	2
43	WASHER	NYLON	1

* RECOMMENDED SPARE PARTS

NOTE:

- Δ 1. FOR USE WITH 01.25 THRU 02.00 VALVE ASSEMBLIES, ALSO VALVE TRAVEL WILL BE RESTRICTED TO 0.62.
- ▲ 2. USED ONLY WITH 00.50" STN. STL. BONNET.

ENGRD VALVES ORDER: _____ ITEM: _____
 SHEET _____ OF _____
 FIGURE NO.: _____
 CUSTOMER: _____
 CUSTOMER P.O.: _____
 ISSUED BY: _____ CERTIFIED BY: _____

THIRD ANGLE PROJECTION	
UNLESS OTHERWISE SPECIFIED, ALL DIMENSIONS ARE IN INCHES	

ECN# 6601

DATE	BY
DWN 01-28-02	BLM
CHKD 01-28-02	STD
APVD 01-28-02	STD

VALVE ASSEMBLY
WEIR 00.50 THRU 02.00
#12 REVERSE ACTUATOR
WITH SOLDER ENDS

ITT Industries
Engineered Valves
Lancaster, PA USA

CS D 004198 REV B
SHEET 2 OF 2