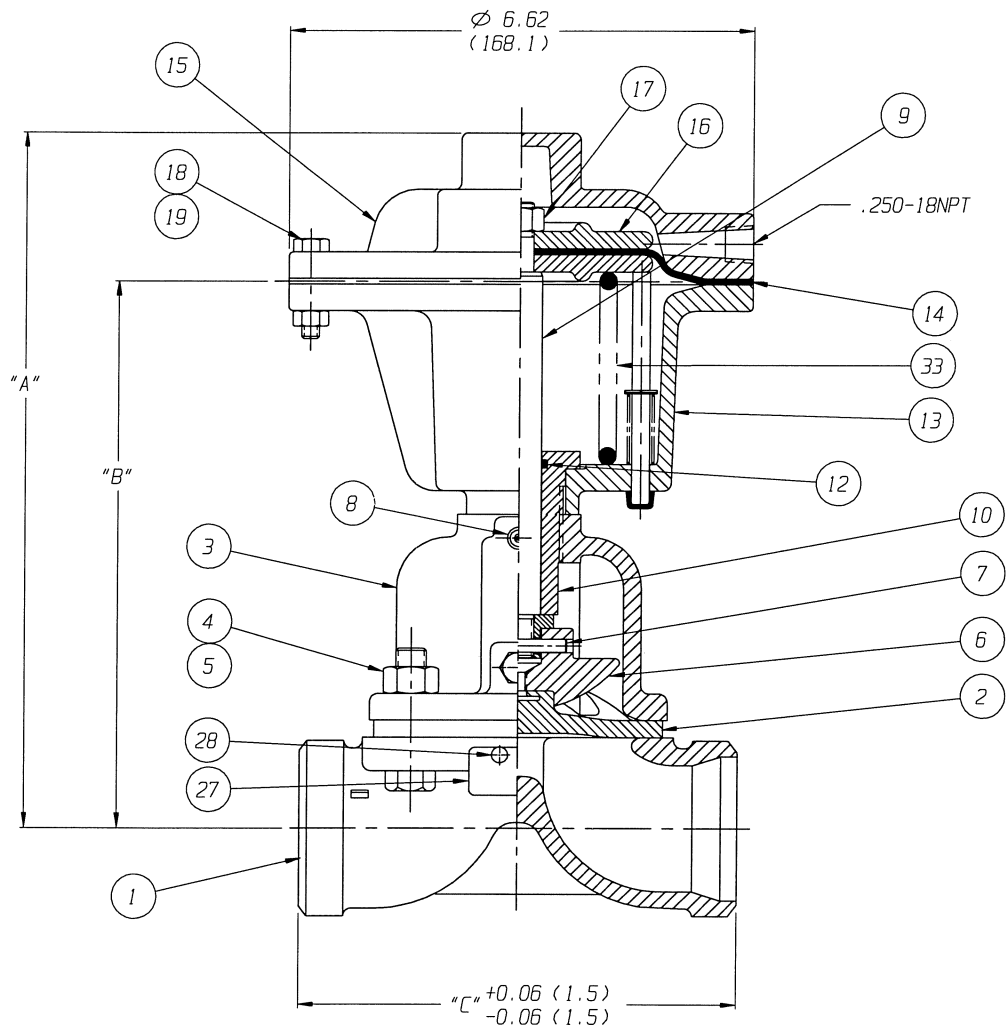
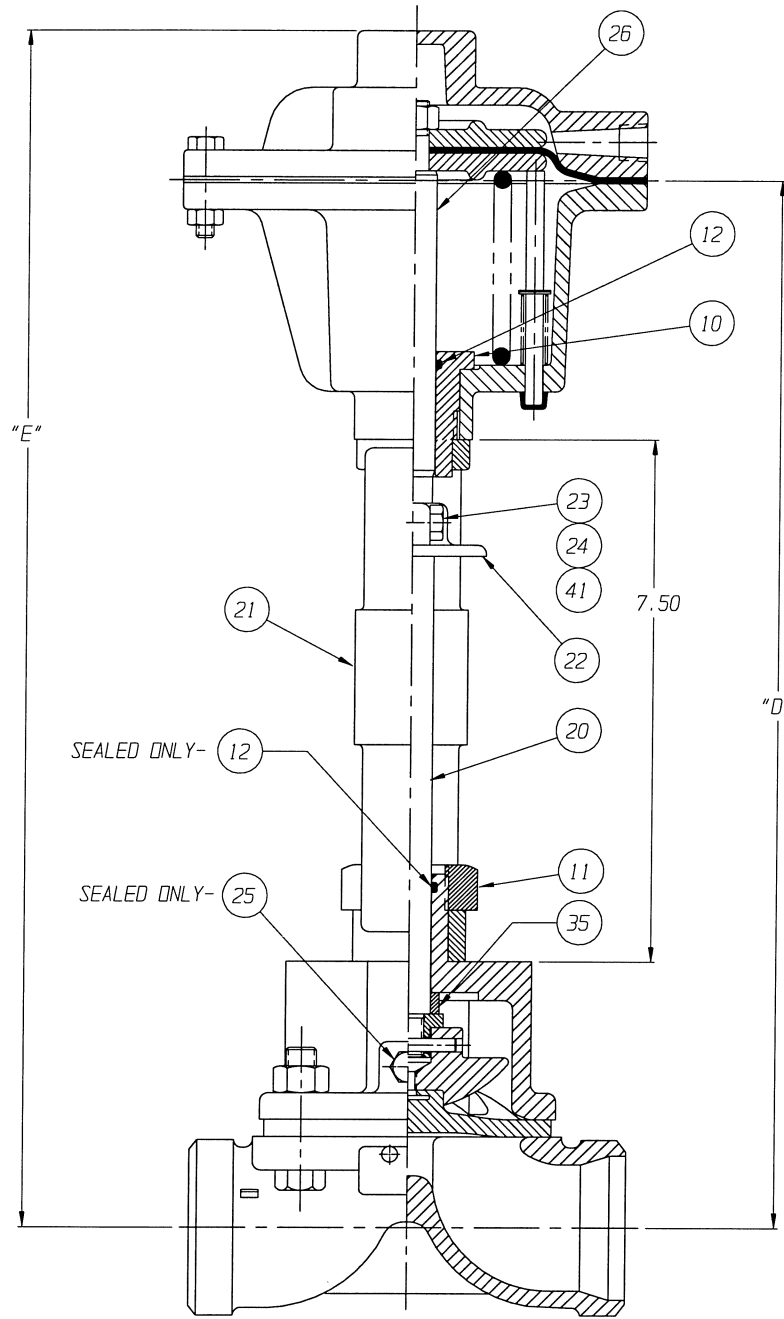


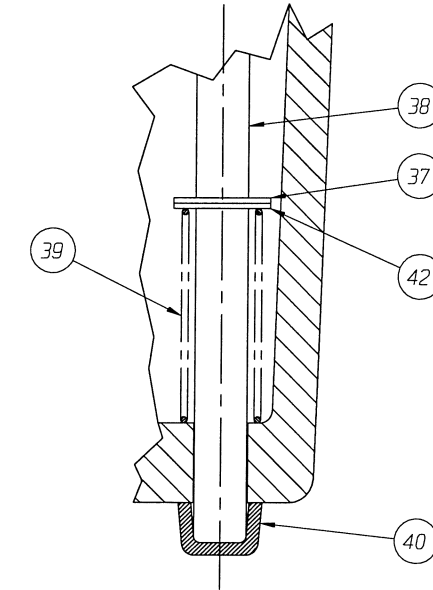
POSITION INDICATOR IS SHOWN 90° FROM TRUE POSITION



CLOSE COUPLED
 FURNISHED



YOKES MOUNTED
 IRON BONNET
 FURNISHED



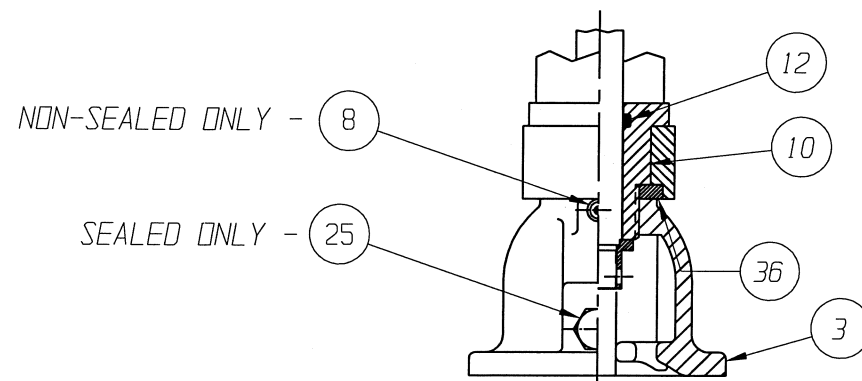
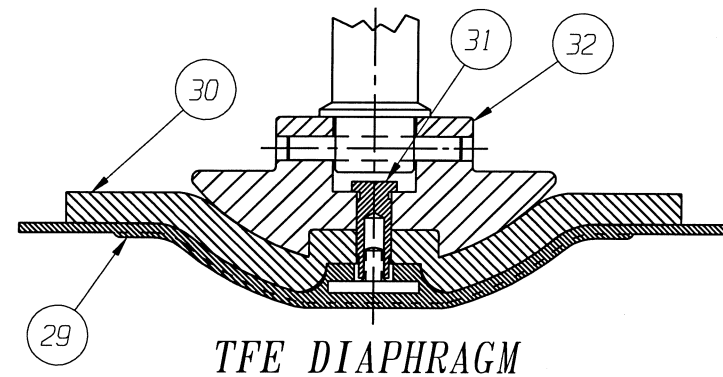
DETAIL
 POSITION INDICATOR
 (OPTIONAL)

ENGRD VALVES ORDER: - ITEM: -
 SHEET - OF -
 FIGURE NO.: -
 CUSTOMER: -
 CUSTOMER P.O.: -
 ISSUED BY: - CERTIFIED BY: -

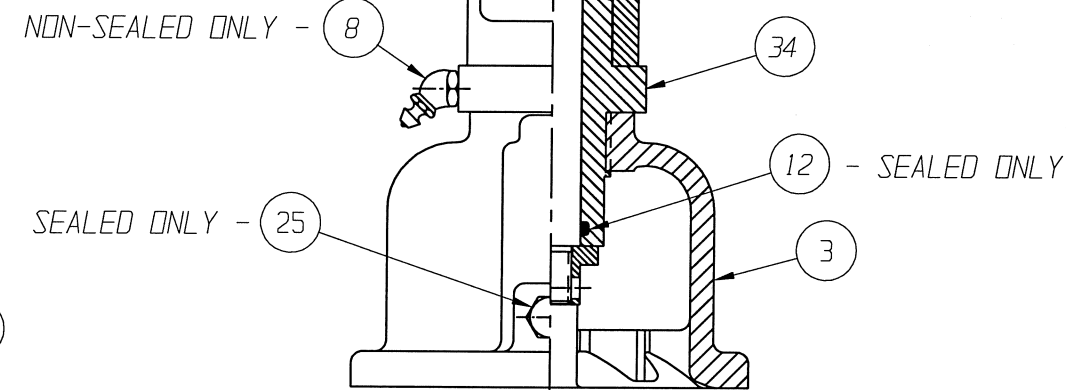
THIRD ANGLE PROJECTION		DATE	BY	VALVE ASSEMBLY WEIR 00.50 THRU 02.00 #12 DIRECT ACTUATOR WITH BUTTWELDED ENDS (PIPE)	ITT Industries Engineered Valves Lancaster, PA USA
	DWN	01-29-02	BLM		
	CHKD	01-29-02	STD		
	APVD	01-29-02	STD		
ECN# 6601	UNLESS OTHERWISE SPECIFIED, ALL DIMENSIONS ARE IN INCHES			CS D	004201 SHEET 1 OF 2 REV B

VALVE SIZE	'A'	'B'	'C'	'D'	'E'	O-RING
00.50	7.17 (182.1)	5.04 (127.9)	3.50 (88.9)	12.54 (318.4)	14.67 (372.6)	#112
00.75	7.72 (196.1)	5.59 (142.0)	4.00 (101.6)	13.09 (332.5)	15.22 (386.7)	
01.00	8.27 (210.0)	6.14 (156.0)	4.50 (114.3)	13.62 (345.9)	15.75 (400.1)	
01.25 & 01.50	9.53 (242.1)	7.39 (187.6)	5.50 (139.7)	14.89 (378.1)	17.02 (432.3)	#114
02.00	10.15 (257.9)	8.02 (203.7)	6.25 (158.8)	15.87 (403.1)	18.01 (457.4)	

DIMENSIONS SHOWN IN () PARENTHESES ARE MILLIMETERS.



**00.50 THRU 01.00
STEEL BONNET
YOKE MOUNTED**



**01.25 - 02.00
STEEL BONNET
YOKE MOUNTED**

LIST OF PARTS			
ITEM	DESCRIPTION	MATERIAL	QTY.
1	BODY, BUTTWELD PIPE	-	1
* 2	DIAPHRAGM, ELASTOMER	-	1
3	BONNET, ADAPTER	-	1
4	HEX, CAP SCREWS OR STUDS	-	4
5	NUTS	-	4
6	COMPRESSOR, F/ ELASTOMER DIAPHRAGM	ZINC B-86	1
7	PIN, SPIROL	STN. STL. TYPE 302	1
8	FITTING, LUBE	-	1
9	SPINDLE, VALVE	STN. STL. A-582, TYPE 303	1
10	BUSHING, ADAPTER	-	1
11	NUT, HEAVY HEX. JAM	CAR. STL.	1
* 12	O-RING 'SEE CHART'	BUNA-N	AR
13	COVER, LOWER	ALUMINUM	1
* 14	DIAPHRAGM, AIR MOTOR	BUNA-N	1
15	COVER, UPPER	ALUMINUM	1
16	PLATE, ACTUATOR	ALUMINUM B-85, SC84A	2
17	NUT, HEX JAM	CAR. STL.	1
18	SCREW, HEX HD. CAP	CAR. STL.	12
19	NUT, HEX	CAR. STL.	12
20	SPINDLE, VALVE YOKE	STN. STL. A-582, TYPE 303	1
21	YOKE	D. I. A-395, GR. 60-40-18	1
22	COUPLING, HALF	STN. STL. A-351, GR. CF8	2
23	SCREW, HEX HD. CAP	CAR. STL.	2
24	NUT, HEX	CAR. STL.	2
25	PLUG, VENT	STN. STL. TYPE 304	1
26	SPINDLE, ACTUATOR	STN. STL. A-582, TYPE 302	1
27	PLATE, IDENTIFICATION	STN. STL. A-240, TYPE 304	1
28	SCREW, DRIVE TYPE U	CAR. STL. SAE GR. 2	4
* 29	DIAPHRAGM, PTFE	R2	1
* 30	CUSHION, BACKING	ELASTOMER	1
31	NUT, TUBE	BRASS B-16, C36000 H02	1
32	COMPRESSOR, F/ PLASTIC DIAPHRAGM	ZINC B-86	1
33	SPRING #88	STEEL	1
34	BUSHING, ADAPTER	CAR. STL. A-108, GR. 12L14	1
Δ 35	SPACER	CAR. STL.	1
▲ 36	SPACER, YOKE	BRASS	1
37	RING, RETAINING	STEEL	1
38	ROD, INDICATING	STN. STL. 18-8	1
39	SPRING #99	STEEL	1
40	CAP	PLASTIC	1
41	WASHER, SPRINGLOCK	CAR. STL.	2
42	WASHER	NYLON	1

* RECOMMENDED SPARE PARTS

NOTE:

- Δ 1. FOR USE WITH 01.25 THRU 02.00 VALVE ASSEMBLIES, ALSO VALVE TRAVEL WILL BE RESTRICTED TO 0.62.
- ▲ 2. USED ONLY WITH 00.50" STN. STL. BONNET.

ENGRD VALVES ORDER: _____ ITEM: _____
 SHEET _____ OF _____
 FIGURE NO.: _____
 CUSTOMER: _____
 CUSTOMER P.O.: _____
 ISSUED BY: _____ CERTIFIED BY: _____

THIRD ANGLE PROJECTION	DATE	BY
	DWN	01-29-02 BLM
	CHKD	01-29-02 STD
	APVD	01-29-02 STD

ECN# 6601

UNLESS OTHERWISE SPECIFIED,
ALL DIMENSIONS ARE IN INCHES

VALVE ASSEMBLY
WEIR 00.50 THRU 02.00
#12 DIRECT ACTUATOR
WITH BUTTWELD ENDS (PIPE)

		ITT Industries	
Engineered Valves Lancaster, PA USA			
CS	D	004201	REV B
SHEET 2 OF 2			