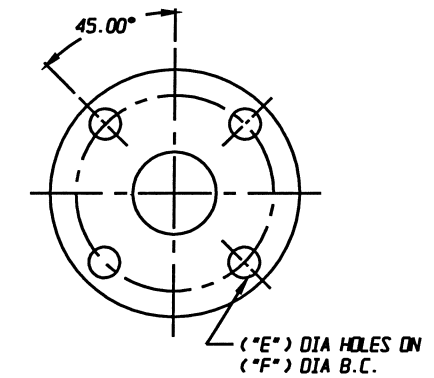


DETAIL POSITION INDICATOR (OPTIONAL)

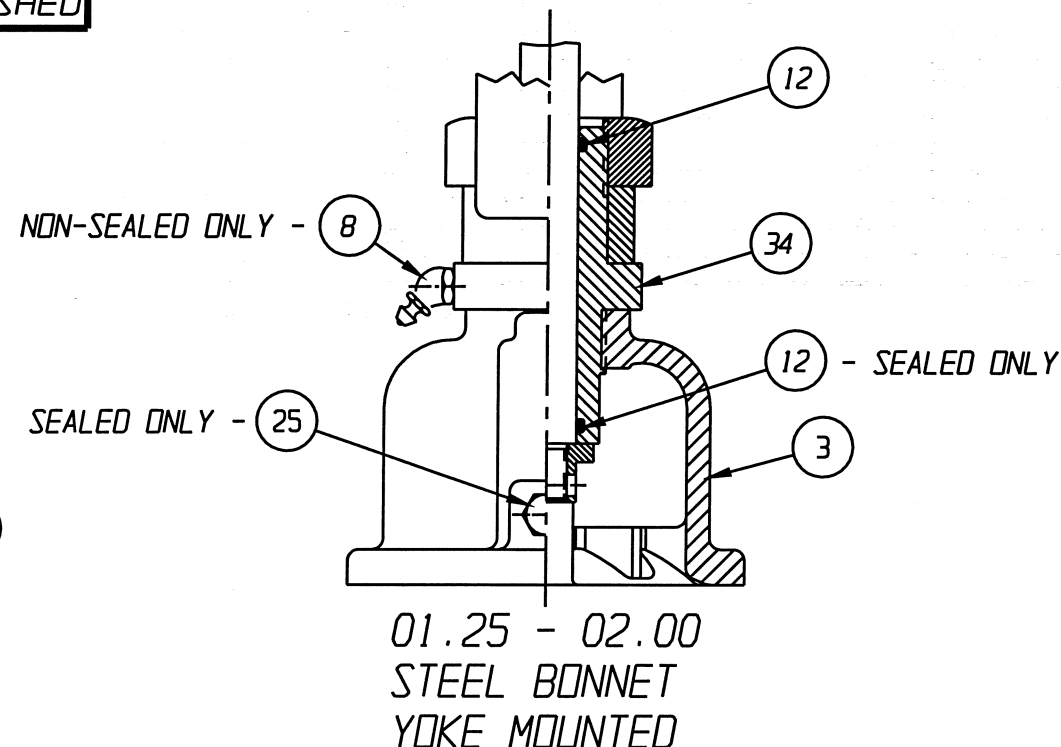
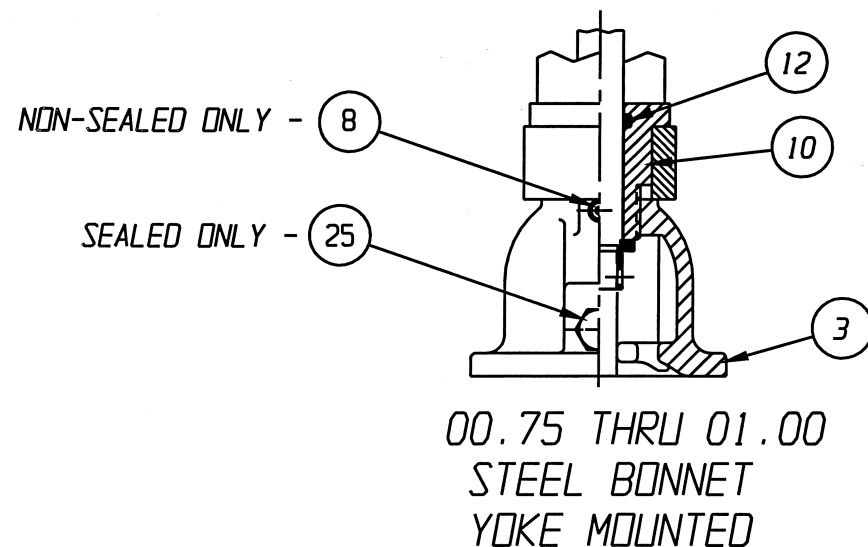
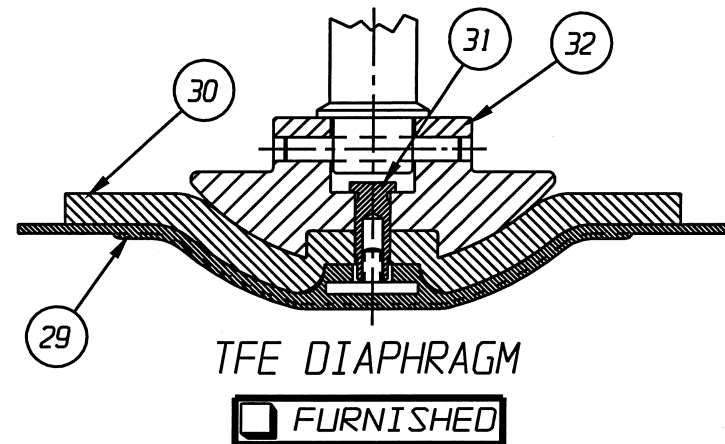


00.75 - 02.00 FLANGE

UNLESS OTHERWISE SPECIFIED, DIMENSIONS NOT SHOWN IN BRACKETS [] ARE IN INCHES. DIMENSIONS SHOWN IN BRACKETS [] ARE IN MILLIMETERS.

ENGRD VALVES ORDER: -	ITEM: -	THIRD ANGLE PROJECTION	DATE	BY	VALVE ASSEMBLY	
FIGURE NO.: -			DWN 12/06/01	BLM	WEIR 00.75 THRU 02.00	
CUSTOMER: -			CHKD 12/06/01	STD	WITH FLANGED ENDS	000000-000
CUSTOMER P.O.: -			APVD 12/06/01	STD	PLASTIC LINED	
			ALL DIMENSIONS SHOWN ON THIS DRAWING ARE FOR REFERENCE ONLY		MASTER DWG: 004207-1/2/C	ISSUED BY: -
					ECN# 6601	CERT BY: -

VALVE SIZE	'A'	'B'	'C'	'D' DIA	'E' DIA	'F' DIA	'G'	'H'	'J'	'K'	O-RING
00.75	8.07 [205.0]	5.94 [150.9]	5.88 [149.4]	3.88 [98.5]	.500 -13UNC	2.75 [69.8]	15.57 [395.5]	13.44 [341.4]	0.06 [1.5]	0.19 [4.83]	#112
01.00	8.43 [214.1]	6.30 [160.0]	5.88 [149.4]	4.25 [107.9]	0.62 [15.7]	3.12 [79.2]	15.93 [404.6]	13.80 [350.5]	0.06 [1.5]		
01.25	9.53 [242.1]	7.41 [188.2]	6.94 [176.3]	5.00 [127.0]	.500 -13UNC	3.50 [88.9]	17.04 [432.8]	14.91 [378.7]	0.06 [1.5]	0.20 [5.1]	#114
01.50					0.62 [15.7]	3.88 [98.5]					
02.00	10.16 [258.1]	8.03 [204.0]	7.94 [201.7]	6.00 [152.4]	0.75 [19.0]	4.75 [120.6]	18.01 [457.4]	15.88 [403.3]	0.06 [1.5]	0.22 [5.6]	



LIST OF PARTS			
ITEM	DESCRIPTION	MATERIAL	QTY.
1	BODY, FLANGED PLASTIC LINED	-	1
2	DIAPHRAGM	-	1
3	BONNET, ADAPTER	-	1
4	STUDS	-	4
5	NUTS	-	4
6	COMPRESSOR, F/ ELASTOMER DIAPHRAGM	ZINC B-86	1
7	PIN, SPIROL	STN. STL. TYPE 302	1
8	FITTING, LUBE	-	1
9	SPINDLE, VALVE	STN. STL. A-582, TYPE 303	1
10	BUSHING, ADAPTER	-	1
11	NUT, HVY. HEX JAM	C. STL.	1
12	O-RING 'SEE CHART'	BUNA-N	AR
13	COVER, LOWER	ALUMINUM	1
14	DIAPHRAGM, AIR MOTOR	BUNA-N	1
15	COVER, UPPER	ALUMINUM	1
16	PLATE, ACTUATOR	AL, B85, SC84A	2
17	NUT, HEX	CAR. STL.	1
18	SCREW, HEX HD. CAP	CAR. STL.	12
19	NUT, HEX	CAR. STL.	12
20	SPINDLE, VALVE YOKE	STN. STL. A-582, TYPE 303	1
21	YOKE	D.I. A-395, GR. 60-40-18	1
22	COUPLING, HALF	STN. STL. A-351, GR. CFB	2
23	SCREW, HEX HD. CAP	CAR. STL.	2
24	NUT, HEX	CAR. STL.	2
25	PLUG, VENT	STN. STL. TYPE 304	1
26	SPINDLE, ACTUATOR	STN. STL. A-582, TYPE 302	1
27	PLATE, IDENTIFICATION	STN. STL. A-240, TYPE 304	1
28	SCREW, DRIVE TYPE U	CAR. STL. SAE GR.2	4
29	DIAPHRAGM, PTFE	R2	1
30	CUSHION, BACKING	ELASTOMER	1
31	NUT, TUBE	BRASS B-16, C36000 H02	1
32	COMPRESSOR, F/ PTFE DIAPHRAGM	ZINC B-86	1
33	SPRING #88	STEEL	1
34	BUSHING, ADAPTER	CAR. STL. A-108, GR. 12L14	1
35	SPACER	CAR. STL.	1
36	RING, RETAINING	STEEL	1
37	ROD, INDICATING	STN. STL. 18-8	1
38	SPRING #99	STEEL	1
39	CAP	PLASTIC	1
40	WASHER, SPRINGLOCK	C. STL.	2
41	WASHER	NYLON	1

* RECOMMENDED SPARE PARTS

NOTE:
Δ 1. FOR USE WITH 01.25 THRU 02.00 VALVE ASSEMBLIES,
ALSO VALVE TRAVEL WILL BE RESTRICTED TO 0.62.

UNLESS OTHERWISE SPECIFIED, DIMENSIONS NOT SHOWN IN BRACKETS () ARE IN INCHES. DIMENSIONS SHOWN IN BRACKETS () ARE IN MILLIMETERS.

ENGRD VALVES ORDER: -	ITEM: -	THIRD ANGLE PROJECTION	DATE	BY	VALVE ASSEMBLY	 ITT <small>Engineered Valves www.engvalves.com</small>
FIGURE NO.: -			DWN 12/06/01	BLM	#12 DIRECT ACTUATOR	
CUSTOMER: -			CHKD 12/06/01	STD	WITH FLANGED ENDS	D 000000-000 SHEET 2 OF 2 REV - ISSUED BY: - CERT BY: -
CUSTOMER P.O.: -			APVD 12/06/01	STD	PLASTIC LINED	
		ALL DIMENSIONS SHOWN ON THIS DRAWING ARE FOR REFERENCE ONLY			MASTER DWG: 004207-2/2/C	ECN# 6601