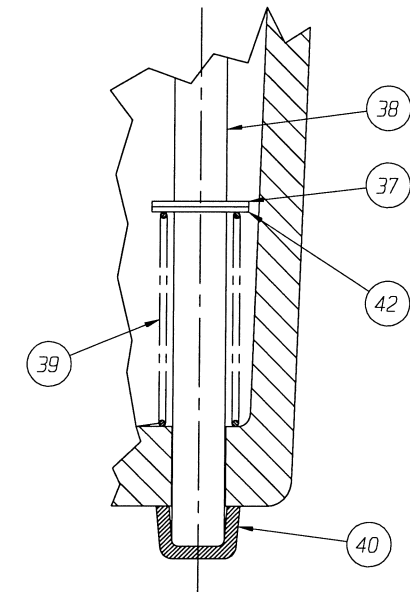
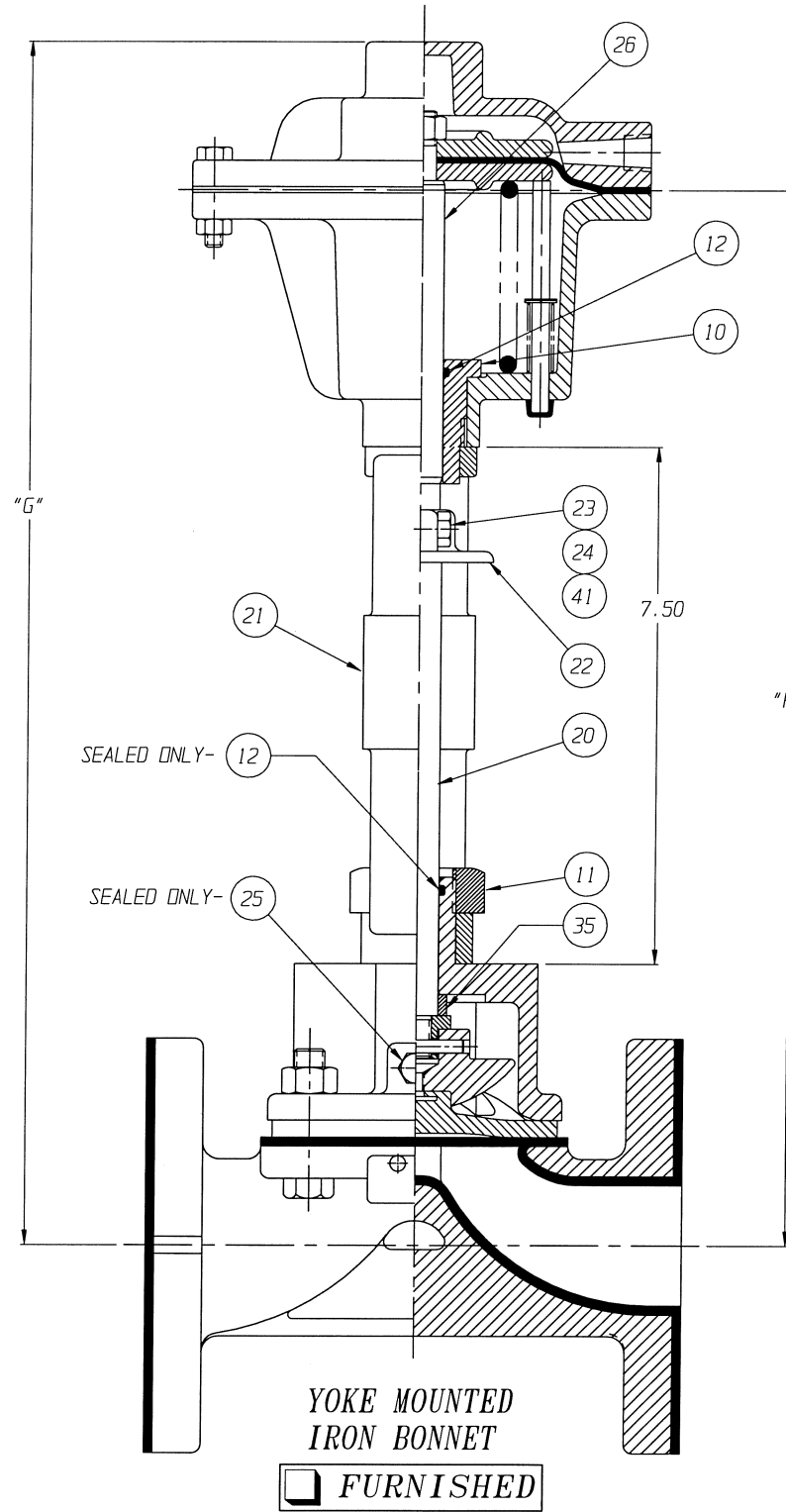
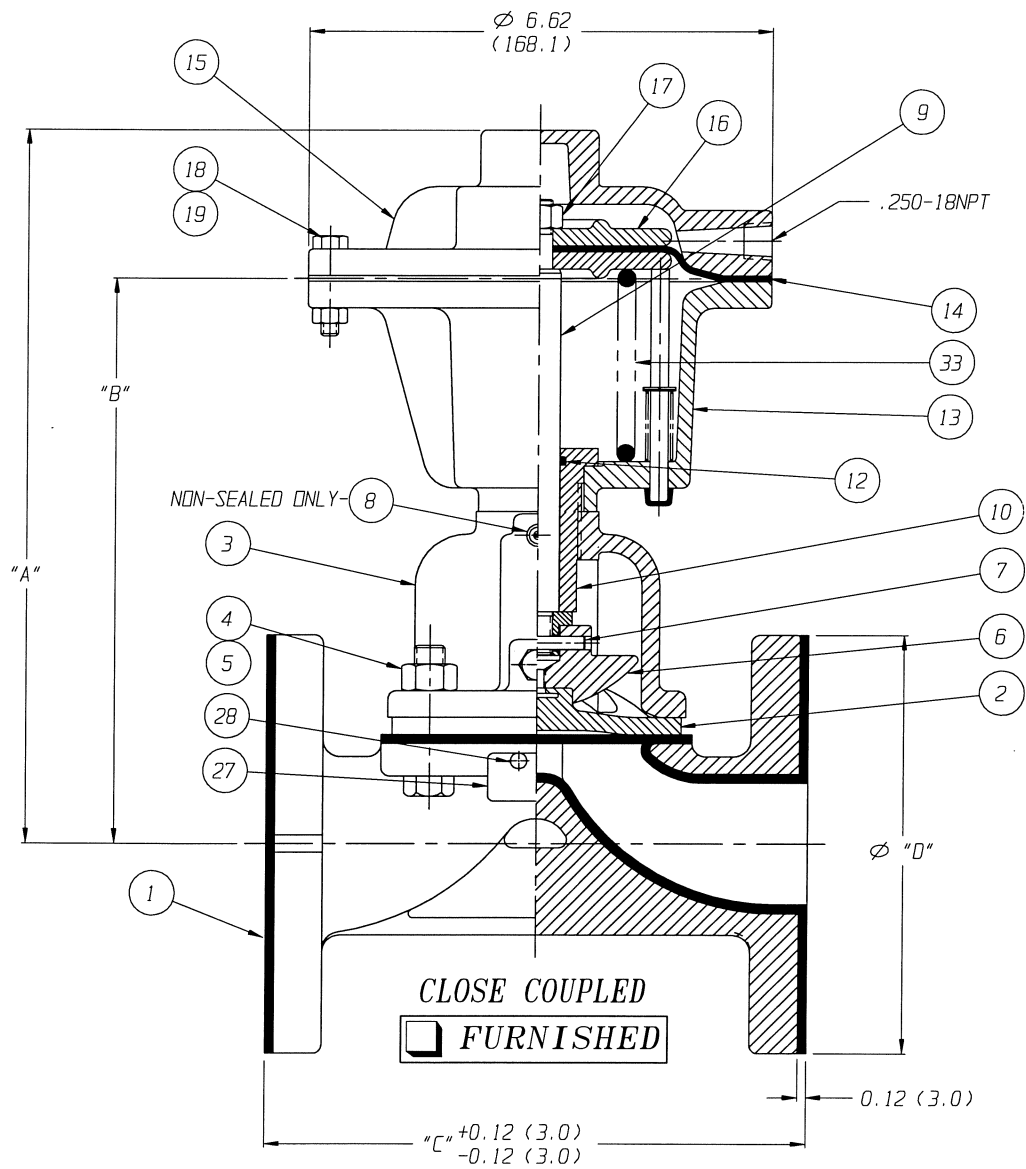
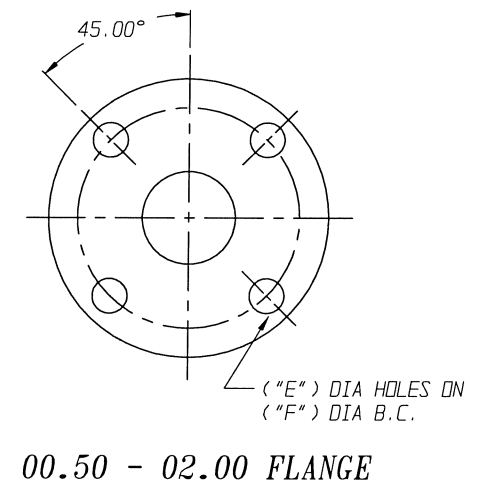



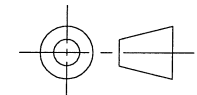
POSITION INDICATOR IS SHOWN 90° FROM TRUE POSITION



DETAIL  
POSITION INDICATOR  
(OPTIONAL)

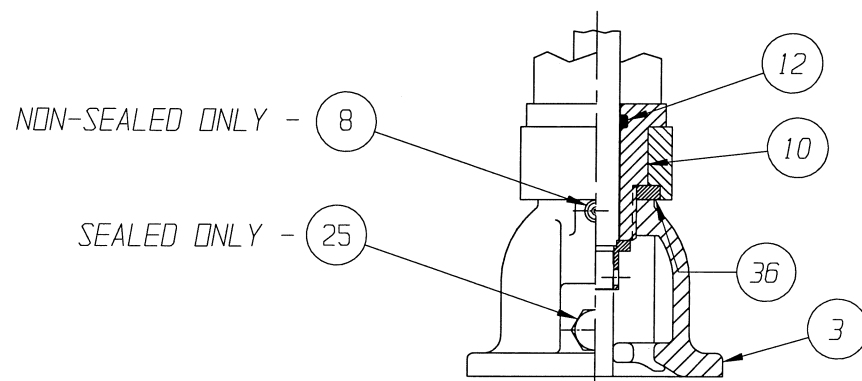
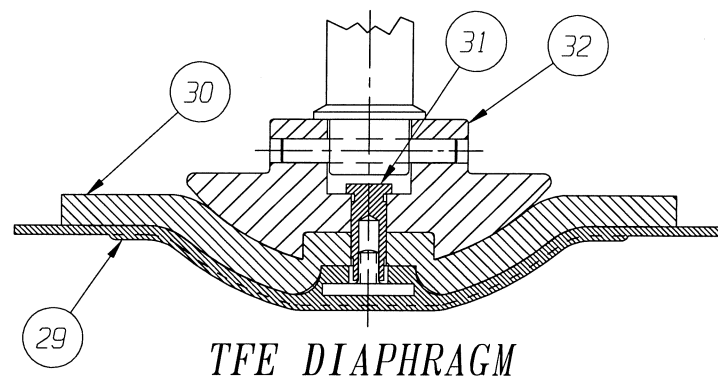


ENGRD VALVES ORDER: \_\_\_\_\_ ITEM: \_\_\_\_\_  
 SHEET \_\_\_\_\_ OF \_\_\_\_\_  
 FIGURE NO.: \_\_\_\_\_  
 CUSTOMER: \_\_\_\_\_  
 CUSTOMER P.O.: \_\_\_\_\_  
 ISSUED BY: \_\_\_\_\_ CERTIFIED BY: \_\_\_\_\_

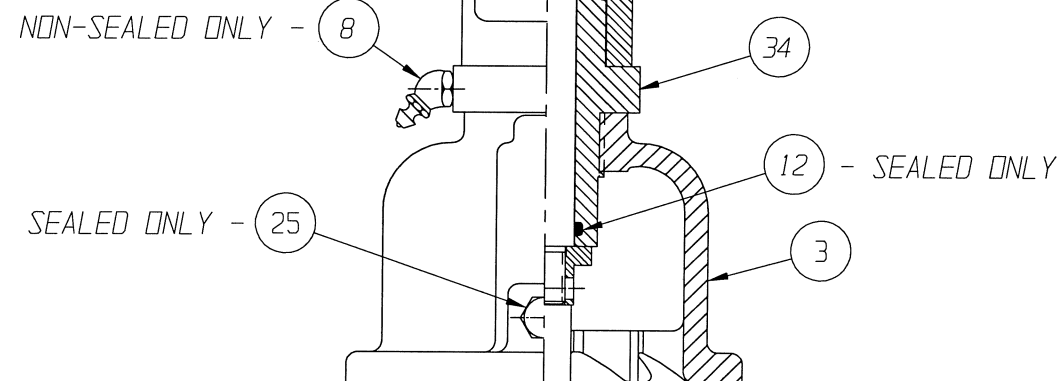
THIRD ANGLE PROJECTION		DATE	BY	VALVE ASSEMBLY WEIR 00.50 THRU 02.00 #12 DIRECT ACTUATOR WITH FLANGED ENDS RUBBER LINED	 <b>ITT Industries</b> Engineered Valves Lancaster, PA USA
	DWN	02-15-02	BLM		
	CHKD	02-15-02	STD		
	APVD	02-15-02	STD		
ECN# 6601	UNLESS OTHERWISE SPECIFIED, ALL DIMENSIONS ARE IN INCHES			CS D	004208 SHEET 1 OF 2
					REV B

VALVE SIZE	'A'	'B'	'C'	'D' DIA	'E' DIA	'F' DIA	'G'	'H'	O-RING
00.50	7.35 (186.7)	5.22 (132.6)	4.25 (108.0)	3.50 (88.9)	0.62 (15.7)	2.38 (60.4)	14.86 (377.4)	12.73 (323.3)	#112
00.75	8.06 (204.7)	5.93 (150.6)	5.75 (146.0)	3.88 (98.5)	0.62 (15.7)	2.75 (69.8)	15.56 (395.2)	13.43 (341.1)	
01.00	8.42 (213.9)	6.29 (159.8)	5.75 (146.0)	4.25 (107.9)	0.62 (15.7)	3.12 (79.2)	15.92 (404.4)	13.79 (350.3)	
01.25	9.71 (246.6)	7.59 (192.8)	6.75 (171.4)	5.00 (127.0)	0.62 (15.7)	3.50 (88.9)	17.22 (437.4)	15.09 (383.3)	#114
01.50						3.88 (98.5)			
02.00	10.40 (264.2)	8.27 (210.0)	7.75 (196.8)	6.00 (152.4)	0.75 (19.0)	4.75 (120.6)	18.25 (463.5)	16.12 (409.4)	

DIMENSIONS SHOWN IN ( ) PARENTHESES ARE MILLIMETERS.



00.50 THRU 01.00  
STEEL BONNET  
YOKE MOUNTED



01.25 - 02.00  
STEEL BONNET  
YOKE MOUNTED

LIST OF PARTS			
ITEM	DESCRIPTION	MATERIAL	QTY.
1	BODY, FLANGED RUBBER LINED	-	1
* 2	DIAPHRAGM, ELASTOMER	-	1
3	BONNET, ADAPTER	-	1
4	HEX, CAP SCREWS OR STUDS	-	4
5	NUTS	-	4
6	COMPRESSOR, F/ ELASTOMER DIAPHRAGM	ZINC B-86	1
7	PIN, SPIROL	STN. STL. TYPE 302	1
8	FITTING, LUBE	-	1
9	SPINDLE, VALVE	STN. STL. A-582, TYPE 303	1
10	BUSHING, ADAPTER	-	1
11	NUT, HEAVY HEX. JAM	CAR. STL.	1
* 12	O-RING 'SEE CHART'	BUNA-N	AR
13	COVER, LOWER	ALUMINUM	1
* 14	DIAPHRAGM, AIR MOTOR	BUNA-N	1
15	COVER, UPPER	ALUMINUM	1
16	PLATE, ACTUATOR	ALUMINUM B-85, SC84A	2
17	NUT, HEX JAM	CAR. STL.	1
18	SCREW, HEX HD. CAP	CAR. STL.	12
19	NUT, HEX	CAR. STL.	12
20	SPINDLE, VALVE YOKE	STN. STL. A-582, TYPE 303	1
21	YOKE	D.I. A-395, GR. 60-40-18	1
22	COUPLING, HALF	STN. STL. A-351, GR. CF8	2
23	SCREW, HEX HD. CAP	CAR. STL.	2
24	NUT, HEX	CAR. STL.	2
25	PLUG, VENT	STN. STL. TYPE 304	1
26	SPINDLE, ACTUATOR	STN. STL. A-582, TYPE 302	1
27	PLATE, IDENTIFICATION	STN. STL. A-240, TYPE 304	1
28	SCREW, DRIVE TYPE U	CAR. STL. SAE GR. 2	4
* 29	DIAPHRAGM, PTFE	R2	1
* 30	CUSHION, BACKING	ELASTOMER	1
31	NUT, TUBE	BRASS B-16, C36000 H02	1
32	COMPRESSOR, F/ PLASTIC DIAPHRAGM	ZINC B-86	1
33	SPRING #88	STEEL	1
34	BUSHING, ADAPTER	CAR. STL. A-108, GR. 12L14	1
Δ 35	SPACER	CAR. STL.	1
▲ 36	SPACER, YOKE	BRASS	1
37	RING, RETAINING	STEEL	1
38	ROD, INDICATING	STN. STL. 18-8	1
39	SPRING #99	STEEL	1
40	CAP	PLASTIC	1
41	WASHER, SPRINGLOCK	CAR. STL.	2
42	WASHER	NYLON	1

\* RECOMMENDED SPARE PARTS

NOTE:

- Δ 1. FOR USE WITH 01.25 THRU 02.00 VALVE ASSEMBLIES, ALSO VALVE TRAVEL WILL BE RESTRICTED TO 0.62.
- ▲ 2. USED ONLY WITH 00.50" STN. STL. BONNET.

ENGRD VALVES ORDER: \_\_\_\_\_ ITEM: \_\_\_\_\_  
 SHEET \_\_\_\_\_ OF \_\_\_\_\_  
 FIGURE NO.: \_\_\_\_\_  
 CUSTOMER: \_\_\_\_\_  
 CUSTOMER P.O.: \_\_\_\_\_  
 ISSUED BY: \_\_\_\_\_ CERTIFIED BY: \_\_\_\_\_

THIRD ANGLE PROJECTION		DATE	BY
		DWN 02-15-02	BLM
		CHKD 02-15-02	STD
		APVD 02-15-02	STD

ECN# 6601

UNLESS OTHERWISE SPECIFIED,  
ALL DIMENSIONS ARE IN INCHES

DATE	BY
02-15-02	BLM
02-15-02	STD
02-15-02	STD

VALVE ASSEMBLY  
WEIR 00.50 THRU 02.00  
#12 DIRECT ACTUATOR  
WITH FLANGED ENDS  
RUBBER LINED



CS D 004208 REV B  
SHEET 2 OF 2