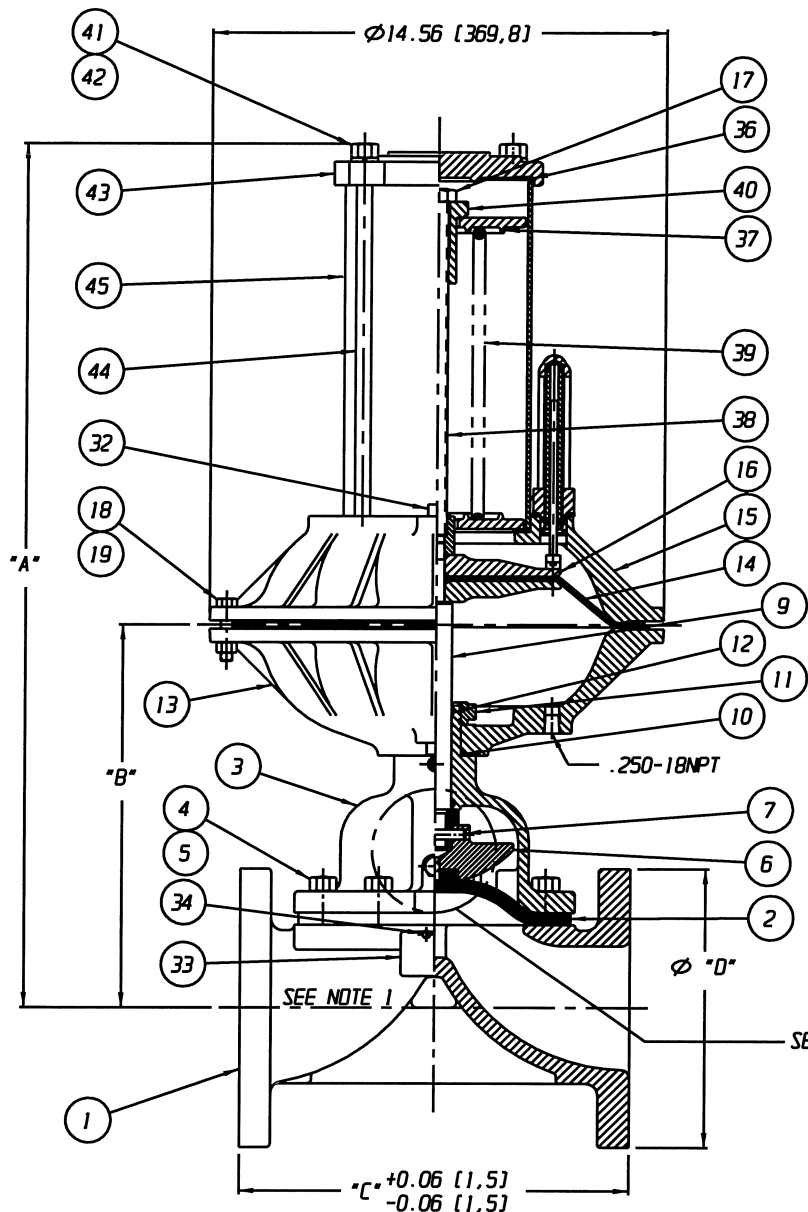
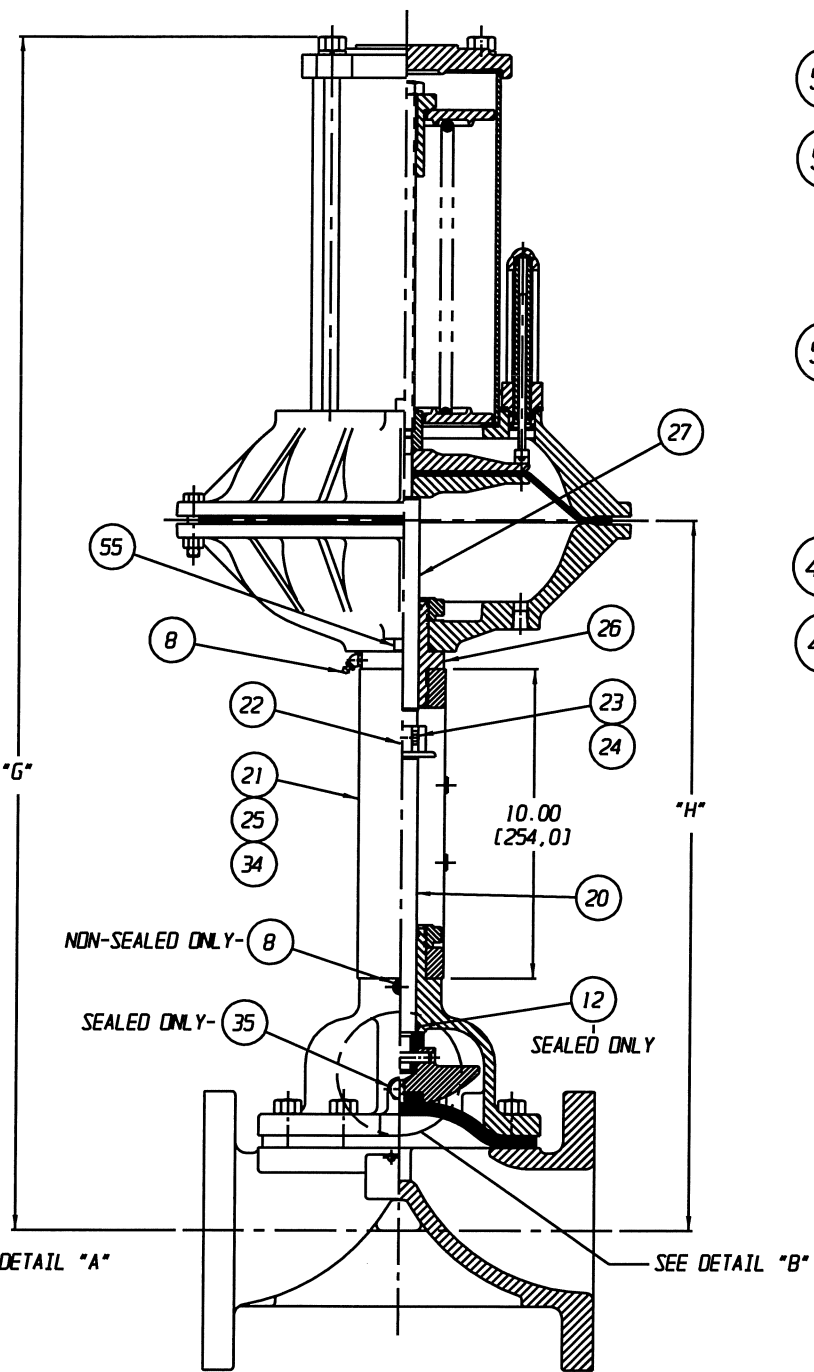


POSITION INDICATOR IS SHOWN 90° FROM TRUE POSITION



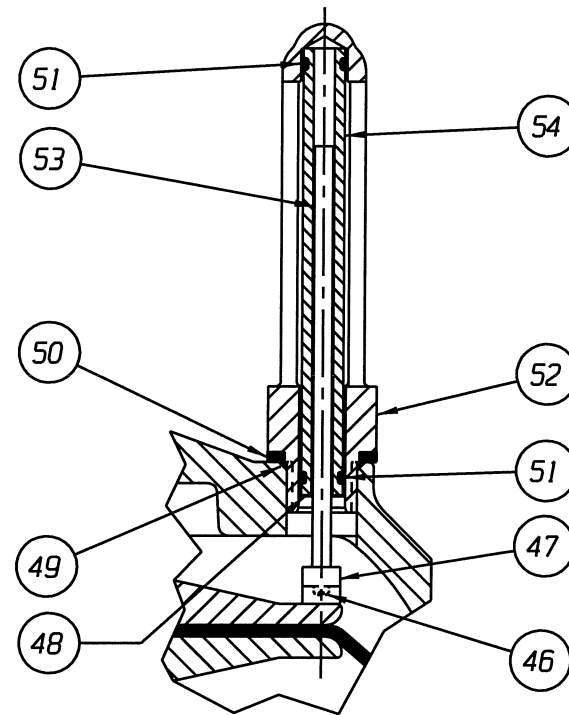
CLOSE COUPLED

FURNISHED



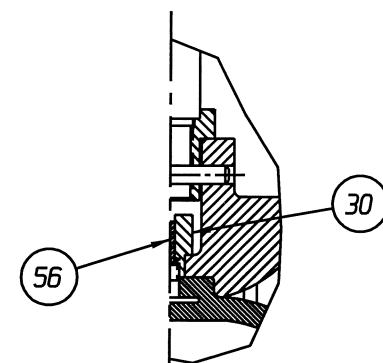
YOKE MOUNTED

FURNISHED



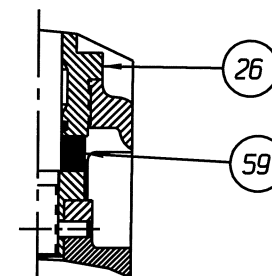
DETAIL: POSITION INDICATOR (OPTIONAL)

FURNISHED



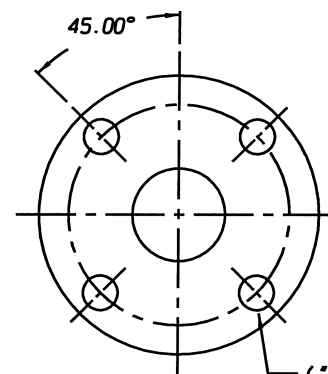
DETAIL "A"  
WEIR 06.00

FURNISHED



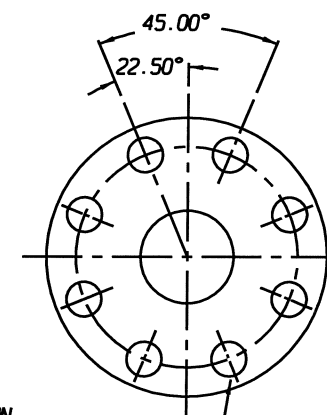
DETAIL "B"  
YOKE MOUNT, WEIR 06.00

FURNISHED



01.25 - 03.00 FLANGE

FURNISHED



04.00 & 06.00 FLANGE

FURNISHED

UNLESS OTHERWISE SPECIFIED, DIMENSIONS NOT SHOWN IN BRACKETS [ ] ARE IN INCHES. DIMENSIONS SHOWN IN BRACKETS [ ] ARE IN MILLIMETERS.

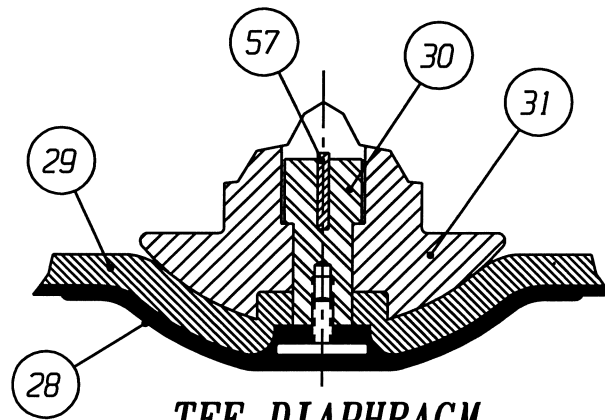
ENGRD VALVES ORDER: -	ITEM: -	THIRD ANGLE PROJECTION	DATE	BY	VALVE ASSEMBLY
FIGURE NO.: -			DWN 01/19/10	DJS	WEIR 01.25 THRU 06.00
CUSTOMER: -			CHKD 01/19/10	STO	#50 DIRECT ACTUATOR
CUSTOMER P.D.: -			APVD 01/19/10	STO	WITH FLANGED ENDS
					MASTER DWG: 004345-1/2/C IECN# 12879



Engineered Valves  
www.engvalves.com

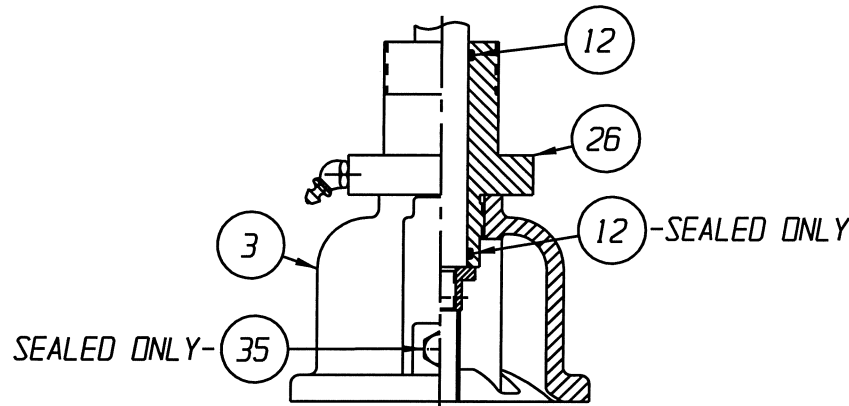
000000-000 SHEET 1 OF 2 REV -

VALVE SIZE	'A'	'B'	'C'	'D' DIA	'E' DIA	'F' DIA	'G'	'H'	QTY. BONNET CAP SCREWS STUDS/NUTS	O-RING (ITEM 12)
01.25	24.57 [624,1]	9.07 [230,4]	6.50 [165,1]	5.00 [127,0]	0.62 [15,7]	3.50 [88,9]	35.14 [892,6]	19.64 [498,9]	4	#116
01.50						3.88 [98,5]			4	
02.00	25.11 [637,8]	9.61 [244,1]	7.50 [190,5]	6.00 [152,4]	0.75 [19,0]	4.75 [120,6]	35.68 [906,3]	20.18 [512,6]	4	#214
02.50	26.08 [662,4]	10.58 [268,7]	8.50 [215,9]	7.00 [177,8]	0.75 [19,0]	5.50 [139,7]	36.65 [930,9]	21.15 [537,2]	4	
03.00	26.63 [676,4]	11.13 [282,7]	10.00 [254,0]	7.50 [190,5]	0.75 [19,0]	6.00 [152,4]	37.20 [944,9]	21.70 [551,2]	4	
04.00	27.97 [710,4]	12.47 [316,7]	12.50 [317,5]	9.00 [228,6]	0.75 [19,0]	7.50 [190,5]	38.54 [978,9]	23.04 [585,2]	8	
06.00	31.43 [798,3]	15.93 [404,6]	16.00 [406,4]	11.00 [279,4]	0.88 [22,3]	9.50 [241,3]	42.00 [1066,8]	26.50 [673,1]	10	



**TFE DIAPHRAGM**

**FURNISHED**



SEALED ONLY-

**BONNET W/ADAPTER BUSHING**  
**02.50, 06.00 DI BONNET (E/34)**  
**01.25 - 06.00 SS BONNET (E/31)**

**FURNISHED**

**NOTE:**

- 1. VALVE IS BI-DIRECTIONAL (NO FLOW ARROW).
- ▲ 2. ITEM #57 USED ONLY WITH 6.00" VALVE ONLY.
- 3. ITEMS #58 USED WITH 6.00" YOKE MOUNTED VALVE ONLY.

LIST OF PARTS			
ITEM	DESCRIPTION	MATERIAL	QTY.
1	BODY, FLANGED	-	1
2	DIAPHRAGM	-	1
3	BONNET, ADAPTER	-	1
4	HEX, CAP SCREWS OR STUDS	-	SEE CHARTS
5	NUTS	-	SEE CHARTS
6	COMPRESSOR, F/ ELASTOMER DIAPHRAGM	-	1
7	PIN, SPIROL	STN. STL. TYPE 302	1
8	FITTING, LUBE	-	1
9	SPINDLE, VALVE	STN. STL. A-582, TYPE 303	1
* 10	O-RING #326	BUNA-N	1
11	NUT, ADAPTER BUSHING	D.I.	AR
* 12	O-RING 'SEE CHART'	BUNA-N	AR
13	COVER, LOWER	ALUMINUM	1
* 14	DIAPHRAGM, AIR MOTOR	BUNA-N	1
15	COVER, UPPER	ALUMINUM	1
16	PLATE, ACTUATOR	C.I. A-126, CL. B	2
17	NUT, HEX JAM	CAR. STL.	1
18	SCREW, HEX HD. CAP	CAR. STL.	16
19	NUT, HEX	CAR. STL.	16
20	SPINDLE, VALVE YOKE	STN. STL. A-582, TYPE 303	1
21	YOKE	D.I. A-395, GR. 60-40-18	1
22	COUPLING, HALF	STN. STL. A-351, GR. CF8	2
23	SCREW, HEX HD. CAP	CAR. STL.	2
24	NUT, HEX	CAR. STL.	2
25	SCALE, INDICATING	STN. STL.	1
26	BUSHING, ADAPTER	-	AR
27	SPINDLE, ACTUATOR	STN. STL. A-582, TYPE 302	1
* 28	DIAPHRAGM, PTFE	R2	1
* 29	CUSHION, BACKING	ELASTOMER	1
30	NUT, TUBE	BRASS B-16, C36000 H02	1
31	COMPRESSOR, F/ PTFE DIAPHRAGM	-	1
32	PLUG, PIPE	CAR. STL. A-181, GR. 1	1
33	PLATE, IDENTIFICATION	STN. STL. A-240, TYPE 304	1
34	SCREW, DRIVE TYPE U	CAR. STL. SAE GR. 2	4
35	PLUG, VENT	STN. STL. TYPE 416	1
36	GASKET	BUNA-N	2
37	SEAT, SPRING	D.I. A-395, GR. 60-40-18	2
38	ROD, SPRING	CAR. STL. A-108, GR. 1008	1
39	SPRING NO. 102A	STEEL	1
40	BUSHING, ADJUSTING	D.I.	1
41	NUT, HEX.	STEEL	4
42	WASHER, SPRINGLOCK	STEEL	4
43	COVER, SPRING	D.I.	1
44	COLUMN	CAR. STL. A-108, GR. 12L14	4
45	HOUSING, SPRING	CAR. STL. A-513, TYPE 1 MT	1
46	SCREW, MACHINE FILLISTER HD.	STN. STL. 18-8	1
47	MAGNET, U-181	-	1
48	RING, RETAINING	STEEL	1
49	O-RING #115	BUNA-N	1
50	SPACER, INDICATOR HOUSING	ALUMINUM B-211	1
* 51	O-RING #110	BUNA-N	2
52	HOUSING, INDICATOR	ALUMINUM B-26	1
* 53	ROD, INDICATOR	ALUMINUM B-211	1
54	TUBE, INDICATOR	PLASTIC	1
55	PLUG, PIPE	PLASTIC	1
▲ 56	KEY, TUBE NUT	BRASS B-36, C26000	1
● 57	SPACER	CAR. STL. A-108 GR. 12L14	1

\* RECOMMENDED SPARE PARTS

UNLESS OTHERWISE SPECIFIED, DIMENSIONS NOT SHOWN IN BRACKETS [ ] ARE IN INCHES. DIMENSIONS SHOWN IN BRACKETS [ ] ARE IN MILLIMETERS.

ENGRD VALVES ORDER: -	ITEM: -	THIRD ANGLE PROJECTION	DATE	BY	VALVE ASSEMBLY WEIR 01.25 THRU 06.00 #50 DIRECT ACTUATOR WITH FLANGED ENDS	 <b>ITT</b> Engineered Valves www.engvalves.com
FIGURE NO.: -			DWN 01/19/10	DJS		
CUSTOMER: -			CHKD 01/19/10	STD		000000-000 SHEET 2 OF 2 REV -
CUSTOMER P.O.: -			APVD 01/19/10	STD	MASTER DNG: 004345-2/2/C IECN# 12879	