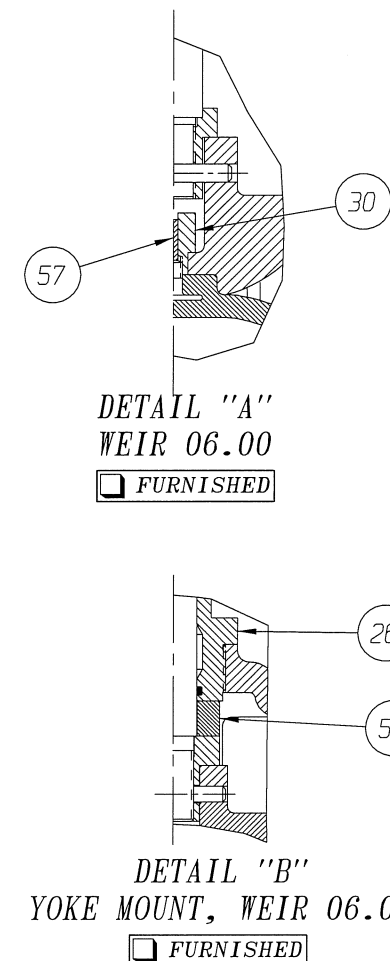
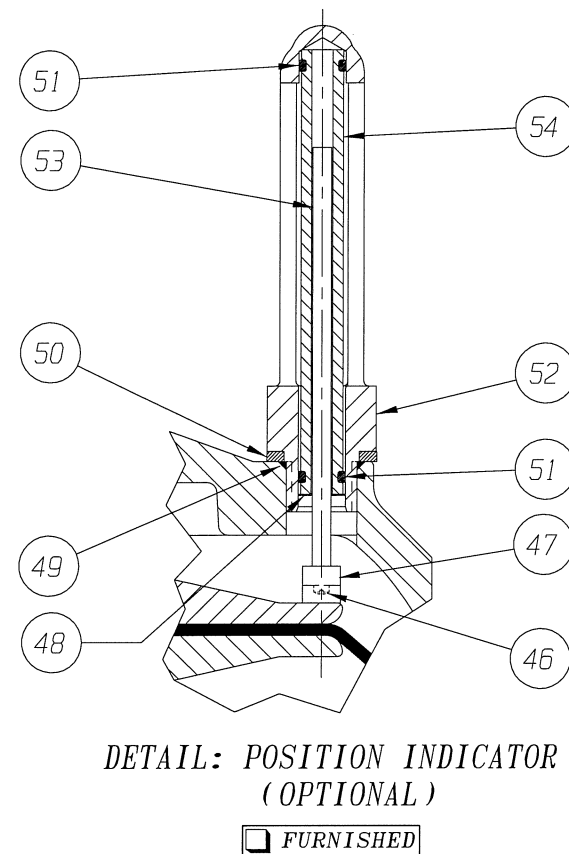
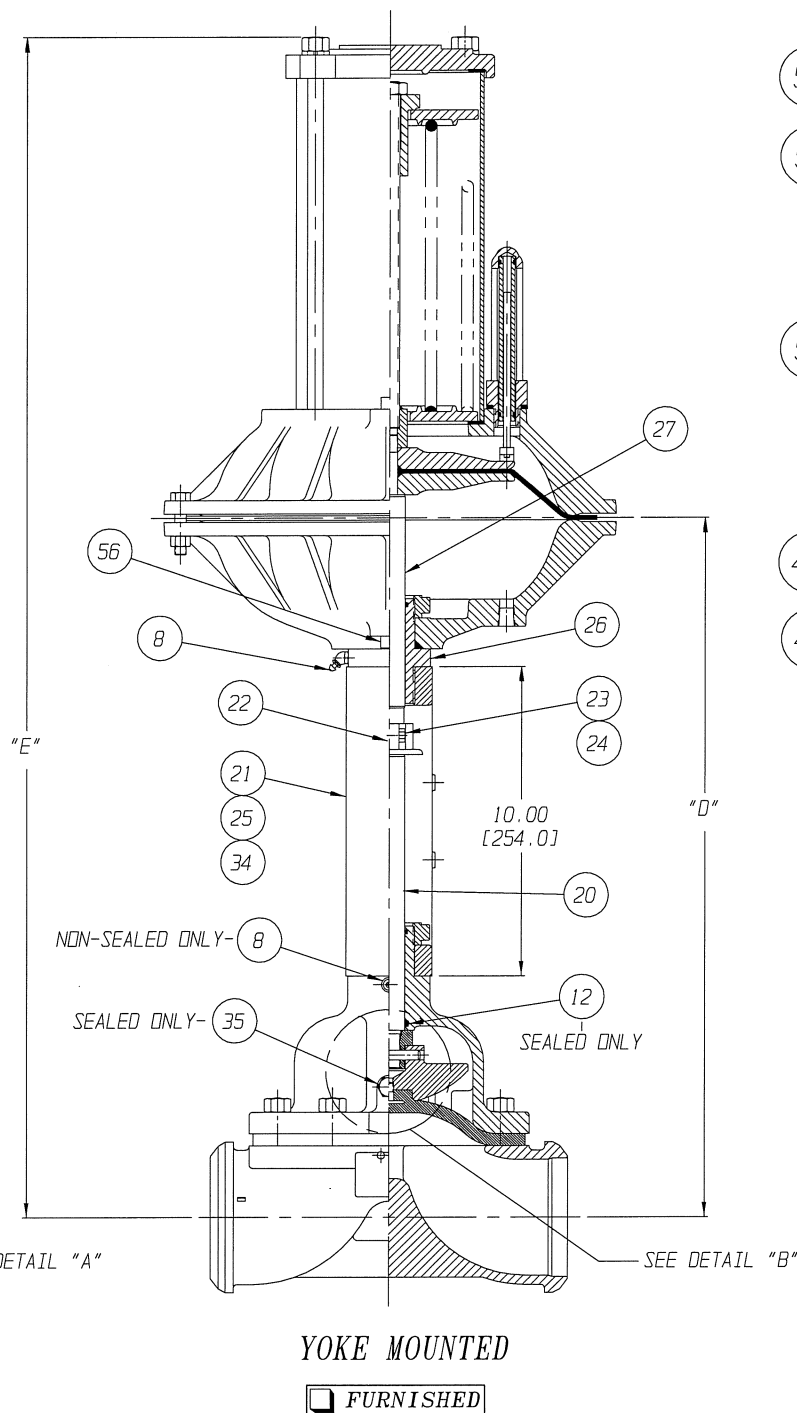
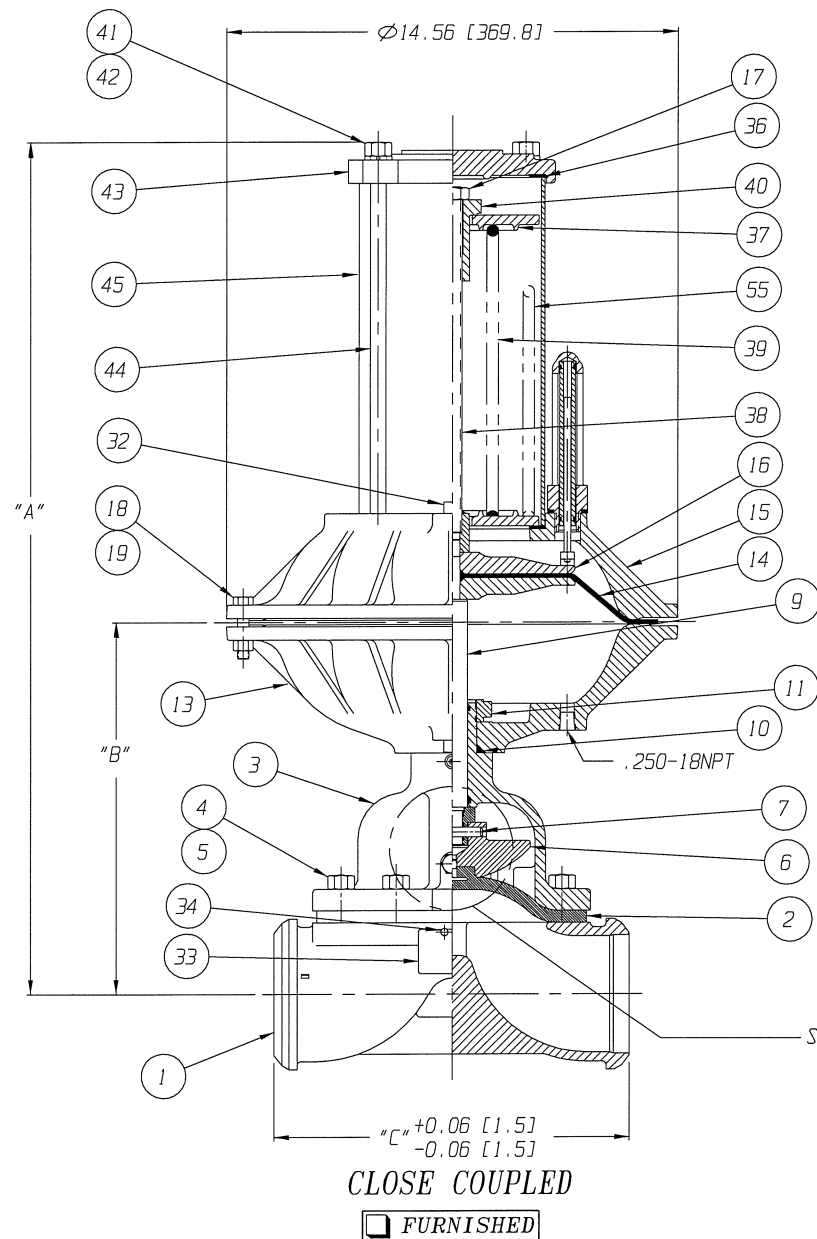


POSITION INDICATOR IS SHOWN 90° FROM TRUE POSITION



UNLESS OTHERWISE SPECIFIED, DIMENSIONS NOT SHOWN IN BRACKETS [ ] ARE IN INCHES. DIMENSIONS SHOWN IN BRACKETS [ ] ARE IN MILLIMETERS.

ENGRD VALVES ORDER: -	ITEM: -	THIRD ANGLE PROJECTION	DATE	BY	VALVE ASSEMBLY
FIGURE NO.: -			DWN 07/25/97	JRD	WEIR 01.25 THRU 06.00
CUSTOMER: -			CHKD 07/25/97	JLW	#50 DIRECT ACTUATOR
CUSTOMER P.O.: -			APVD 07/25/97	KEH	WITH BUTTWELDED ENDS (PIPE)
			MASTER DWG: 004346-1/2/B	ECN# 2235	ISSUED BY: -
					CERT BY: -

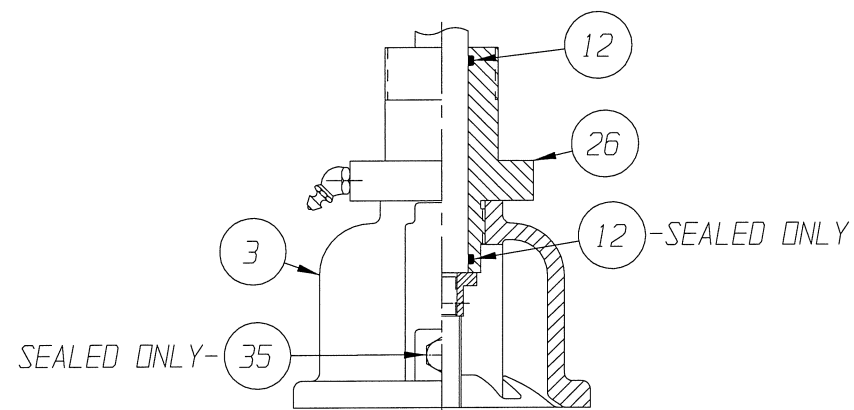
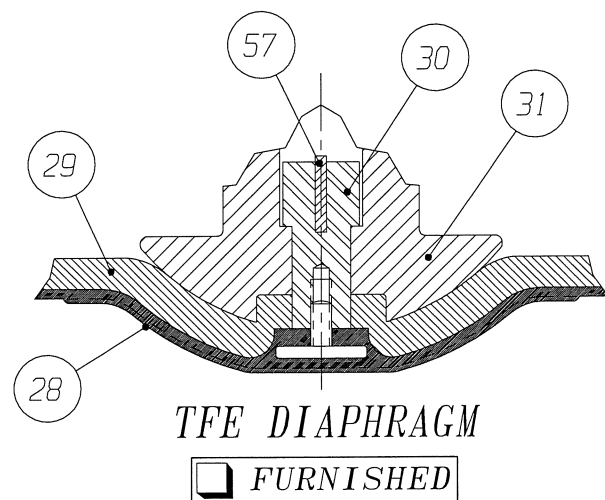


Engineered Valves  
www.engvalves.com

000000-000

SHEET 1 OF 2

VALVE SIZE	'A'	'B'	'C'	'D'	'E'	QTY. BONNET CAP SCREWS STUDS/NUTS	O-RING
01.25 & 01.50	24.52 [622.7]	9.02 [229.2]	5.50 [139.7]	19.59 [497.6]	35.59 [891.3]	4	#116
						4	
02.00	24.96 [634.1]	9.47 [240.7]	6.25 [158.8]	20.04 [509.0]	35.53 [902.5]	4	#214
02.50	26.01 [660.8]	10.52 [267.3]	7.62 [193.5]	21.09 [535.7]	36.58 [929.1]	4	
03.00	26.28 [667.6]	10.79 [274.2]	8.75 [222.2]	21.36 [542.5]	36.85 [936.0]	4	
04.00	27.62 [701.5]	12.13 [308.1]	11.50 [292.1]	22.70 [576.5]	38.19 [970.8]	8	
06.00	31.16 [791.5]	15.67 [398.0]	16.00 [406.4]	26.24 [666.5]	41.73 [1059.9]	10	



**NOTE:**

- △ 1. USED WITH 6.00" VALVE FOR VACUUM SERVICE ONLY.
- ▲ 2. ITEM #57 USED ONLY WITH 6.00" VALVE ONLY.
- 3. ITEMS #58 USED WITH 6.00" YOKE MOUNTED VALVE ONLY.
- ⊗ 4. 2.50" FORGING USES SAME DIMENSIONAL DATA AS 3.00".

\* RECOMMENDED SPARE PARTS

LIST OF PARTS			
ITEM	DESCRIPTION	MATERIAL	QTY.
1	BODY, BUTTWELD PIPE	-	1
* 2	DIAPHRAGM	-	1
3	BONNET, ADAPTER	-	1
4	HEX, CAP SCREWS OR STUDS	-	SEE CHARTS
5	NUTS	-	SEE CHARTS
6	COMPRESSOR, F/ ELASTOMER DIAPHRAGM	-	1
7	PIN, SPIROL	STN. STL. TYPE 302	1
8	FITTING, LUBE	-	1
9	SPINDLE, VALVE	STN. STL. A-582, TYPE 303	1
* 10	O-RING #326	BUNA-N	1
11	NUT, ADAPTER BUSHING	M.I. A-47, GR. 32510	AR
* 12	O-RING 'SEE CHART'	BUNA-N	AR
13	COVER, LOWER	ALUMINUM	1
* 14	DIAPHRAGM, AIR MOTOR	BUNA-N	1
15	COVER, UPPER	ALUMINUM	1
16	PLATE, ACTUATOR	C.I. A-126, CL. B	2
17	NUT, HEX JAM	CAR. STL.	1
18	SCREW, HEX HD. CAP	CAR. STL.	16
19	NUT, HEX	CAR. STL.	16
20	SPINDLE, VALVE YOKE	STN. STL. A-582, TYPE 303	1
21	YOKE	D.I. A-395, GR. 60-40-18	1
22	COUPLING, HALF	STN. STL. A-351, GR. CF8	2
23	SCREW, HEX HD. CAP	CAR. STL.	2
24	NUT, HEX	CAR. STL.	2
25	SCALE, INDICATING	STN. STL.	1
26	BUSHING, ADAPTER	-	AR
* 27	SPINDLE, ACTUATOR	STN. STL. A-582, TYPE 302	1
* 28	DIAPHRAGM, PTFE	R2	1
* 29	CUSHION, BACKING	ELASTOMER	1
30	NUT, TUBE	BRASS B-16, C36000 H02	1
31	COMPRESSOR, F/ PTFE DIAPHRAGM	-	1
32	PLUG, PIPE	CAR. STL. A-181, GR. 1	1
33	PLATE, IDENTIFICATION	STN. STL. A-240, TYPE 304	1
34	SCREW, DRIVE TYPE U	CAR. STL. SAE GR. 2	4
35	PLUG, VENT	STN. STL. TYPE 416	1
36	GASKET	BUNA-N	2
37	SEAT, SPRING	D.I. A-395, GR. 60-40-18	2
38	ROD, SPRING	CAR. STL. A-108, GR. 1008	1
39	SPRING NO. 102A	STEEL	1
40	BUSHING, ADJUSTING	M.I. A47, GR. 32510	1
41	NUT, HEX.	STEEL	4
42	WASHER, SPRINGLOCK	STEEL	4
43	COVER, SPRING	C.I. A-126, CL. C	1
44	COLUMN	CAR. STL. A-108, GR. 12L14	4
45	HOUSING, SPRING	CAR. STL. A-513, TYPE 1 MT	1
46	SCREW, MACHINE FILLISTER HD.	STN. STL. 18-8	1
47	MAGNET, CRUCIBLE U-181	-	1
48	RING, RETAINING	STEEL	1
49	O-RING #115	BUNA-N	1
50	SPACER, INDICATOR HOUSING	ALUMINUM B-211	1
* 51	O-RING #110	BUNA-N	2
* 52	HOUSING, INDICATOR	ALUMINUM B-26	1
* 53	ROD, INDICATOR	ALUMINUM B-211	1
54	TUBE, INDICATOR	PLASTIC	1
△ 55	SPRING NO. 94	STEEL	1
56	PLUG, PIPE	PLASTIC	1
▲ 57	KEY, TUBE NUT	BRASS B-36, C26000	1
● 58	SPACER	CAR. STL. A-108 GR.12L14	1

UNLESS OTHERWISE SPECIFIED, DIMENSIONS NOT SHOWN IN BRACKETS [ ] ARE IN INCHES. DIMENSIONS SHOWN IN BRACKETS [ ] ARE IN MILLIMETERS.

ENGRD VALVES ORDER: -	ITEM: -	THIRD ANGLE PROJECTION	DATE	BY	VALVE ASSEMBLY WEIR 01.25 THRU 06.00 #50 DIRECT ACTUATOR WITH BUTTWELD ENDS (PIPE)
FIGURE NO.: -			DWN 07/25/97	JRD	
CUSTOMER: -			CHKD 07/25/97	JLW	
CUSTOMER P.O.: -		ALL DIMENSIONS SHOWN ON THIS DRAWING ARE FOR REFERENCE ONLY	APVD 07/25/97	KEH	MASTER DWG: 004346-2/2/B ECN# 2235
					Engineered Valves www.engvalves.com
000000-000					SHEET 2 OF 2
ISSUED BY: -					CERT BY: -