

ECN# 146

ITT ENGRD VLVS ORDER: -
 CUSTOMER: -
 CUSTOMER P.O.: -
 ISSUED BY: _____ CERTIFIED BY: _____

-	-	-	-	-	-	DATE	BY
-	-	-	-	-	-	DWN	11/12/96 JRD
C	11/26/97	3265	JLW	DJS	RRK	CHKD	11/14/96 JLW
B	07/25/97	2235	JRD	JLW	KEH	APVD	11/15/96 RRK
A	02/17/97	146	JRD	JLW	RRK		
REV	DATE	ECN NBR	BY	CHKD	APVD		

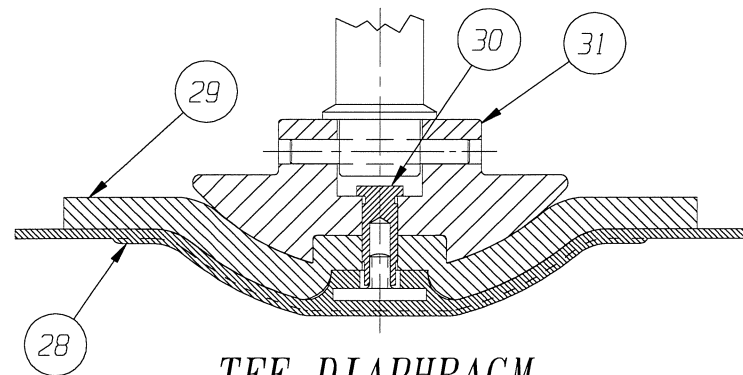
VALVE ASSEMBLY
 WEIR 01.25 THRU 03.00
 #50 DIRECT ACTUATOR
 WITH SOCKET WELD ENDS

ITT Engineered Valves
 ITT Fluid Technology Corporation
 Lancaster, Pa

CS	D	004349	REV C
		SHEET 1 OF 2	

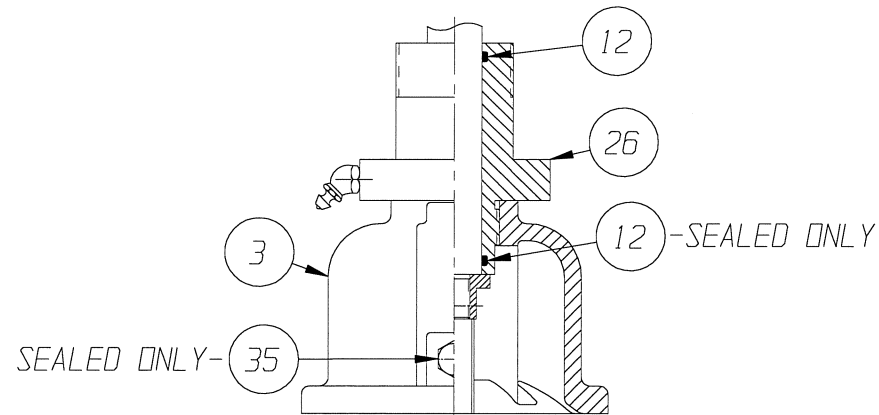
VALVE SIZE	'A'	'B'	'C'	'D'	'E'	O-RING
01.25 & 01.50	24.52 (622.7)	9.02 (229.2)	6.50 (165.1)	19.59 (497.6)	35.59 (891.3)	#116
02.00	24.96 (634.1)	9.47 (240.7)	7.25 (184.1)	20.04 (509.0)	35.53 (902.5)	
02.50	26.01 (660.8)	10.52 (267.3)	8.38 (212.8)	21.09 (535.7)	36.58 (929.1)	#214
03.00	26.28 (667.6)	10.79 (274.2)	9.75 (247.6)	21.36 (542.5)	36.85 (936.0)	

DIMENSIONS SHOWN IN () PARENTHESES ARE MILLIMETERS.



TFE DIAPHRAGM

FURNISHED



BONNET W/ADAPTER BUSHING
01.25 THRU 03.00

FURNISHED

LIST OF PARTS			
ITEM	DESCRIPTION	MATERIAL	QTY.
1	BODY, SOCKETWELD PIPE	-	1
* 2	DIAPHRAGM	-	1
3	BONNET, ADAPTER	-	1
4	HEX, CAP SCREWS OR STUDS	-	4
5	NUTS	-	4
6	COMPRESSOR, F/ ELASTOMER DIAPHRAGM	-	1
7	PIN, SPIROL	STN. STL. TYPE 302	1
8	FITTING, LUBE	-	1
9	SPINDLE, VALVE	STN. STL. A-582, TYPE 303	1
* 10	O-RING #326	BUNA-N	1
11	NUT, ADAPTER BUSHING	M.I. A-47, GR. 32510	AR
* 12	O-RING 'SEE CHART'	BUNA-N	AR
13	COVER, LOWER	ALUMINUM	1
* 14	DIAPHRAGM, AIR MOTOR	BUNA-N	1
15	COVER, UPPER	ALUMINUM	1
16	PLATE, ACTUATOR	C.I. A-126, CL. B	2
17	NUT, HEX JAM	CAR. STL.	1
18	SCREW, HEX HD. CAP	CAR. STL.	16
19	NUT, HEX	CAR. STL.	16
20	SPINDLE, VALVE YOKE	STN. STL. A-582, TYPE 303	1
21	YOKE	D.I. A-395, GR. 60-40-18	1
22	COUPLING, HALF	STN. STL. A-351, GR. CFB	2
23	SCREW, HEX HD. CAP	CAR. STL.	2
24	NUT, HEX	CAR. STL.	2
25	SCALE, INDICATING	STN. STL.	1
26	BUSHING, ADAPTER	-	AR
27	SPINDLE, ACTUATOR	STN. STL. A-582, TYPE 302	1
* 28	DIAPHRAGM, PTFE	R2	1
* 29	CUSHION, BACKING	ELASTOMER	1
30	NUT, TUBE	BRASS B-16, C36000 H02	1
31	COMPRESSOR, F/ PTFE DIAPHRAGM	-	1
32	PLUG, PIPE	CAR. STL. A-181, GR. 1	1
33	PLATE, IDENTIFICATION	STN. STL. A-240, TYPE 304	1
34	SCREW, DRIVE TYPE U	CAR. STL. SAE GR. 2	4
35	PLUG, VENT	STN. STL. TYPE 416	1
36	GASKET	BUNA-N	2
37	SEAT, SPRING	D.I. A-395, GR. 60-40-18	2
38	ROD, SPRING	CAR. STL. A-108, GR. 100B	1
39	SPRING NO. 102A	STEEL	1
40	BUSHING, ADJUSTING	M.I. A47, GR. 32510	1
41	NUT, HEX.	STEEL	4
42	WASHER, SPRINGLOCK	STEEL	4
43	COVER, SPRING	C.I. A-126, CL. C	1
44	COLUMN	CAR. STL. A-108, GR. 12L14	4
45	HOUSING, SPRING	CAR. STL. A-513, TYPE 1 MT	1
46	SCREW, MACHINE FILLISTER HD.	STN. STL. 18-8	1
47	MAGNET, CRUCIBLE U-181	-	1
48	RING, RETAINING	STEEL	1
49	O-RING #115	BUNA-N	1
50	SPACER, INDICATOR HOUSING	ALUMINUM B-211	1
* 51	O-RING #110	BUNA-N	2
52	HOUSING, INDICATOR	ALUMINUM B-26	1
* 53	ROD, INDICATOR	ALUMINUM B-211	1
54	TUBE, INDICATOR	PLASTIC	1
55	PLUG, PIPE	PLASTIC	1

* RECOMMENDED SPARE PARTS

ECN# 146

ITEM _____ SHEET ____ OF ____

ITT ENGRD VLVS ORDER: - _____
 CUSTOMER: - _____
 CUSTOMER P.O.: - _____
 ISSUED BY: _____ CERTIFIED BY: _____

REV	DATE	ECN NBR	BY	CHKD	APVD	DATE	BY
-	-	-	-	-	-	DATE	BY
-	-	-	-	-	-	DWN 11/12/96	JRD
C	11/26/97	3265	JLW	DJS	RRK	CHKD 11/14/96	JLW
B	07/25/97	2235	JRD	JLW	KEH	APVD 11/15/96	RRK
A	02/17/97	146	JRD	JLW	RRK		

VALVE ASSEMBLY
WEIR 01.25 THRU 03.00
#50 DIRECT ACTUATOR
WITH SOCKET WELD ENDS

ITT Engineered Valves

ITT Fluid Technology Corporation
Lancaster, Pa

CS D 004349 REV C
SHEET 2 OF 2