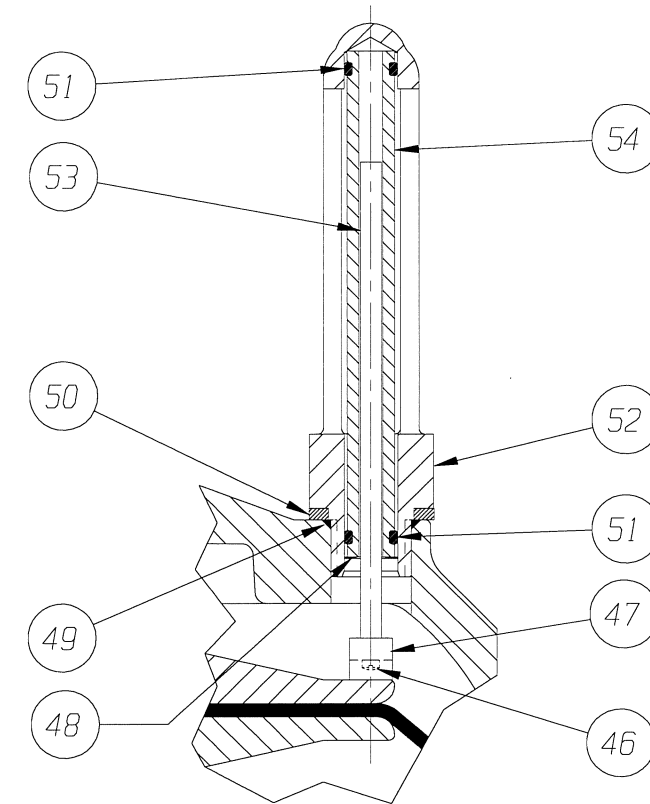
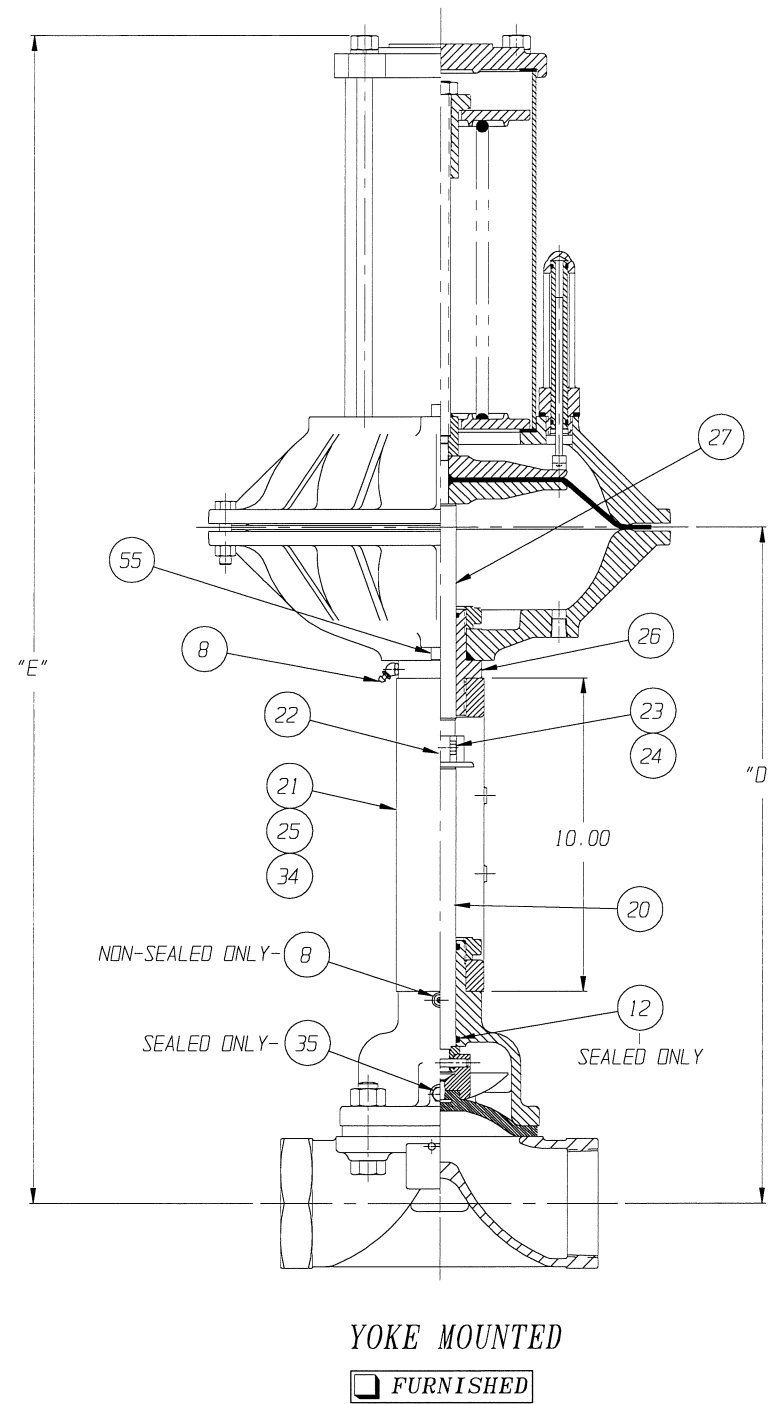
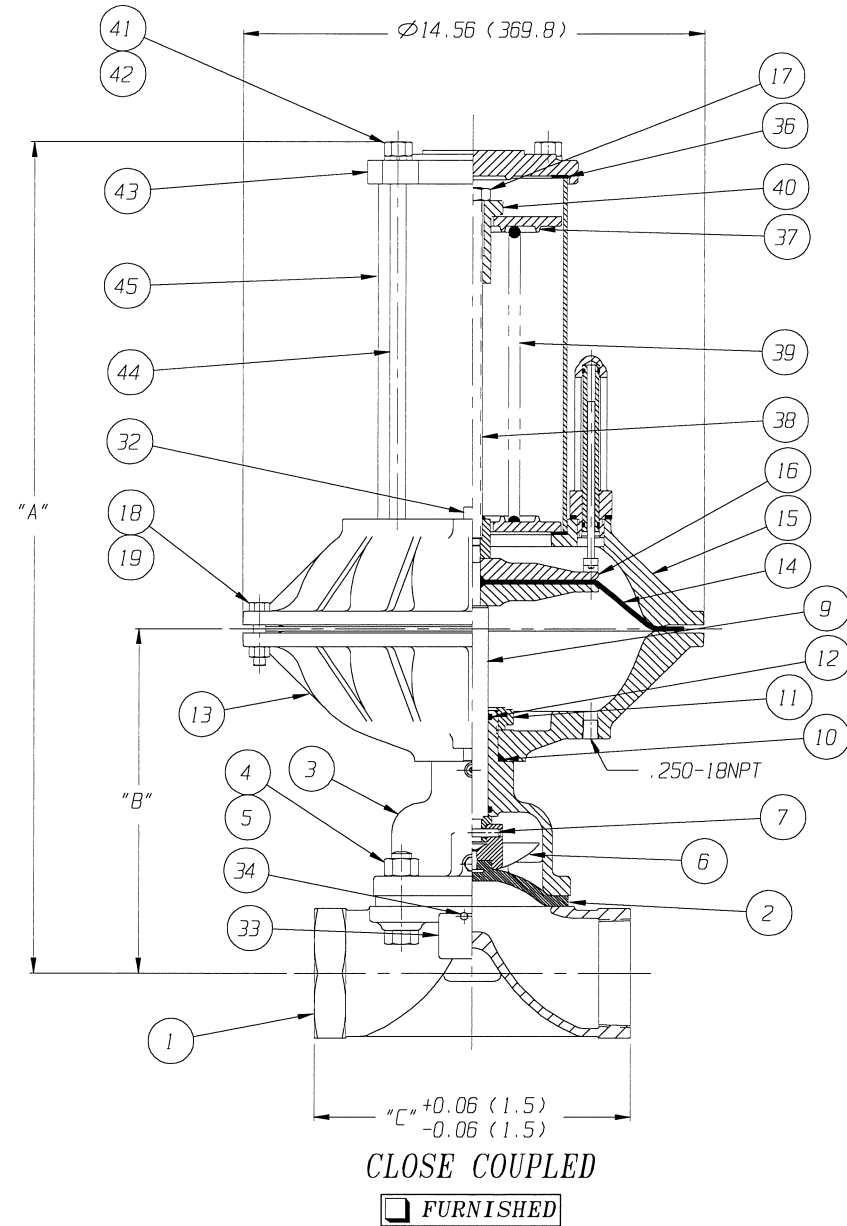


POSITION INDICATOR IS SHOWN 90° FROM TRUE POSITION



ECN# 146

ITT ENGRD VLVS ORDER: -
 CUSTOMER: -
 CUSTOMER P.O.: -
 ISSUED BY: _____ CERTIFIED BY: _____

REV	DATE	ECN NBR	BY	CHKD	APVD	DATE	BY
-	-	-	-	-	-	DWN 11/12/96	JRD
B	07/25/97	2235	JRD	JLW	KEH	CHKD 11/14/96	JLW
A	02/17/97	146	JRD	JLW	RRK	-	-
-	-	-	-	-	-	APVD 11/15/96	RRK

VALVE ASSEMBLY
 WEIR 01.25 THRU 03.00
 #50 DIRECT ACTUATOR
 WITH SCREWED ENDS

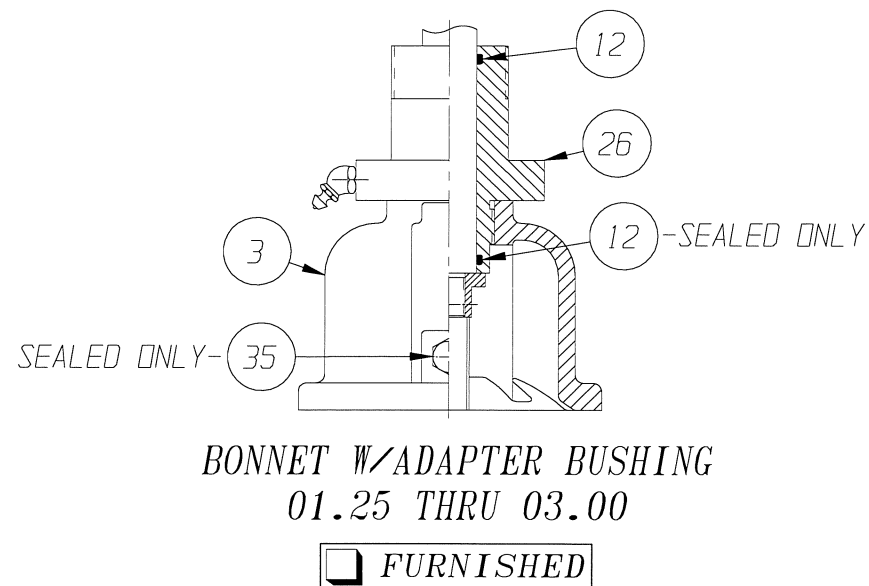
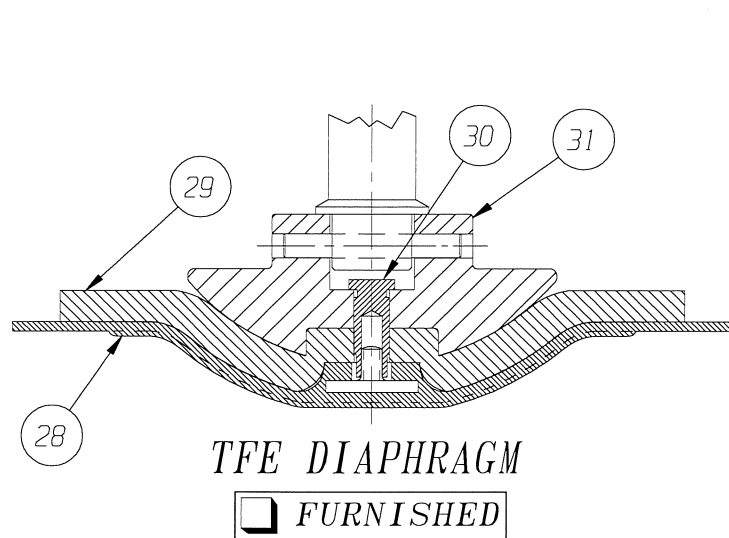
ITT Engineered Valves

ITT Fluid Technology Corporation
 Lancaster, Pa

CS D 004351 REV B
 SHEET 1 OF 2

VALVE SIZE	'A'	'B'	'C'	'D'	'E'	O-RING
01.25 & 01.50	24.83 (630.7)	9.34 (237.2)	5.50 (139.7)	19.91 (505.7)	35.40 (899.2)	#116
02.00	25.31 (642.9)	9.82 (249.4)	6.50 (165.1)	20.39 (517.9)	35.88 (911.4)	
02.50	26.30 (668.0)	10.81 (274.6)	8.00 (203.2)	21.39 (543.3)	36.87 (936.5)	#214
03.00	26.82 (681.2)	11.33 (287.8)	10.00 (254.0)	21.90 (556.3)	37.39 (949.7)	

DIMENSIONS SHOWN IN () PARENTHESES ARE MILLIMETERS.



LIST OF PARTS			
ITEM	DESCRIPTION	MATERIAL	QTY.
1	BODY, SCREWED	-	1
* 2	DIAPHRAGM	-	1
3	BONNET, ADAPTER	-	1
4	HEX, CAP SCREWS OR STUDS	-	4
5	NUTS	-	4
6	COMPRESSOR, F/ ELASTOMER DIAPHRAGM	-	1
7	PIN, SPIROL	STN. STL. TYPE 302	1
8	FITTING, LUBE	-	1
9	SPINDLE, VALVE	STN. STL. A-582, TYPE 303	1
* 10	O-RING #326	BUNA-N	1
11	NUT, ADAPTER BUSHING	M.I. A-47, GR. 32510	AR
* 12	O-RING 'SEE CHART'	BUNA-N	AR
13	COVER, LOWER	ALUMINUM	1
* 14	DIAPHRAGM, AIR MOTOR	BUNA-N	1
15	COVER, UPPER	ALUMINUM	1
16	PLATE, ACTUATOR	C.I. A-126, CL. B	2
17	NUT, HEX JAM	CAR. STL.	1
18	SCREW, HEX HD. CAP	CAR. STL.	16
19	NUT, HEX	CAR. STL.	16
20	SPINDLE, VALVE YOKE	STN. STL. A-582, TYPE 303	1
21	YOKE	D.I. A-395, GR. 60-40-18	1
22	COUPLING, HALF	STN. STL. A-351, GR. CFB	2
23	SCREW, HEX HD. CAP	CAR. STL.	2
24	NUT, HEX	CAR. STL.	2
25	SCALE, INDICATING	STN. STL.	1
26	BUSHING, ADAPTER	-	AR
27	SPINDLE, ACTUATOR	STN. STL. A-582, TYPE 302	1
* 28	DIAPHRAGM, PTFE	R2	1
* 29	CUSHION, BACKING	ELASTOMER	1
30	NUT, TUBE	BRASS B-16, C36000 H02	1
31	COMPRESSOR, F/ PTFE DIAPHRAGM	-	1
32	PLUG, PIPE	CAR. STL. A-181, GR. 1	1
33	PLATE, IDENTIFICATION	STN. STL. A-240, TYPE 304	1
34	SCREW, DRIVE TYPE U	CAR. STL. SAE GR. 2	4
35	PLUG, VENT	STN. STL. TYPE 416	1
36	GASKET	BUNA-N	2
37	SEAT, SPRING	D.I. A-395, GR. 60-40-18	2
38	ROD, SPRING	CAR. STL. A-108, GR. 1008	1
39	SPRING NO. 102A	STEEL	1
40	BUSHING, ADJUSTING	M.I. A47, GR. 32510	1
41	NUT, HEX.	STEEL	4
42	WASHER, SPRINGLOCK	STEEL	4
43	COVER, SPRING	C.I. A-126, CL. C	1
44	COLUMN	CAR. STL. A-108, GR. 12L14	4
45	HOUSING, SPRING	CAR. STL. A-513, TYPE 1 MT	1
46	SCREW, MACHINE FILLISTER HD.	STN. STL. 18-8	1
47	MAGNET, CRUCIBLE U-181	-	1
48	RING, RETAINING	STEEL	1
49	O-RING #115	BUNA-N	1
50	SPACER, INDICATOR HOUSING	ALUMINUM B-211	1
* 51	O-RING #110	BUNA-N	2
52	HOUSING, INDICATOR	ALUMINUM B-26	1
* 53	ROD, INDICATOR	ALUMINUM B-211	1
54	TUBE, INDICATOR	PLASTIC	1
55	PLUG, PIPE	PLASTIC	1

* RECOMMENDED SPARE PARTS

ECN# 146

ITEM _____ SHEET ____ OF ____

ITT ENGRD VLVS ORDER: -
 CUSTOMER: -
 CUSTOMER P.O.: -
 ISSUED BY: _____ CERTIFIED BY: _____

REV	DATE	ECN NBR	BY	CHKD	APVD	DATE	BY
-	-	-	-	-	-	DWN	11/12/96 JRD
B	07/25/97	2235	JRD	JLW	KEH	CHKD	11/14/96 JLW
A	02/17/97	146	JRD	JLW	RRK	APVD	11/15/96 RRK

VALVE ASSEMBLY
WEIR 01.25 THRU 03.00
#50 DIRECT ACTUATOR
WITH SCREWED ENDS

ITT Engineered Valves
ITT Fluid Technology Corporation
Lancaster, Pa

CS D 004351 REV B
SHEET 2 OF 2