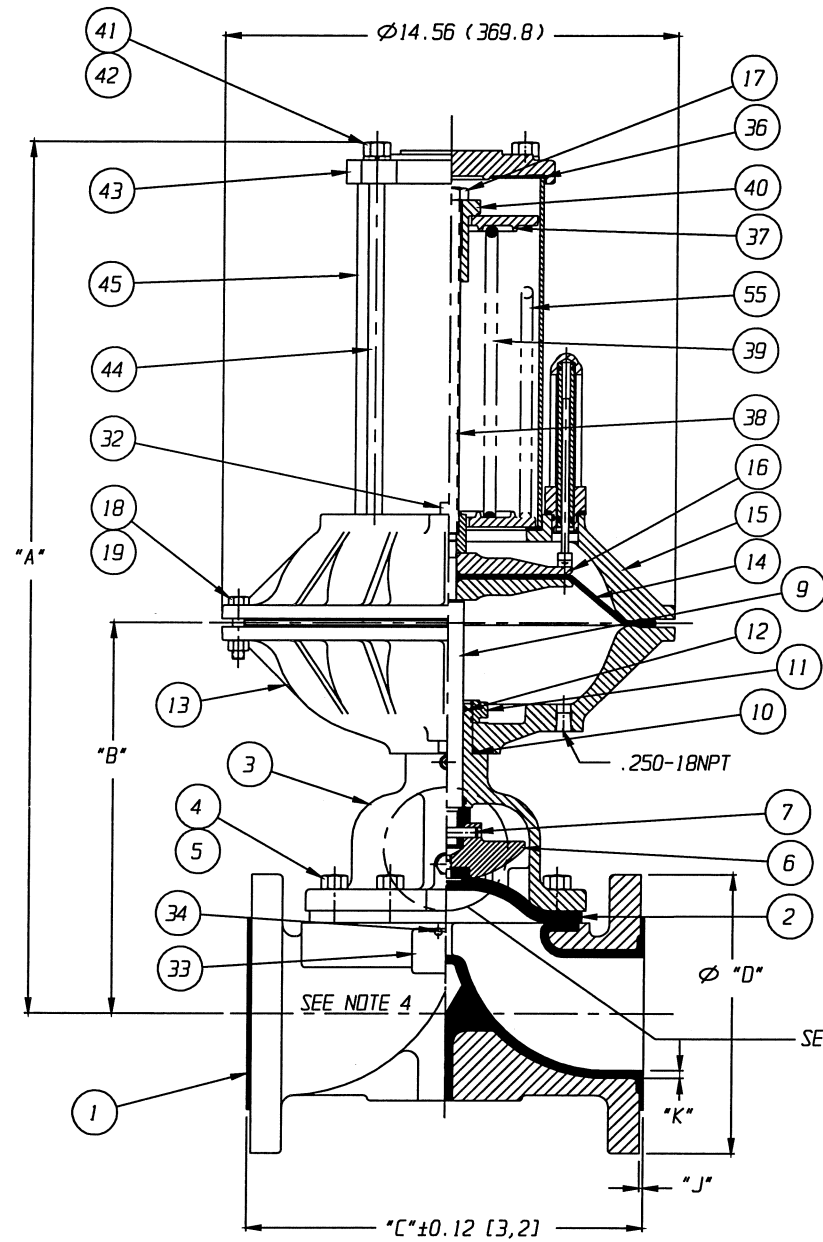
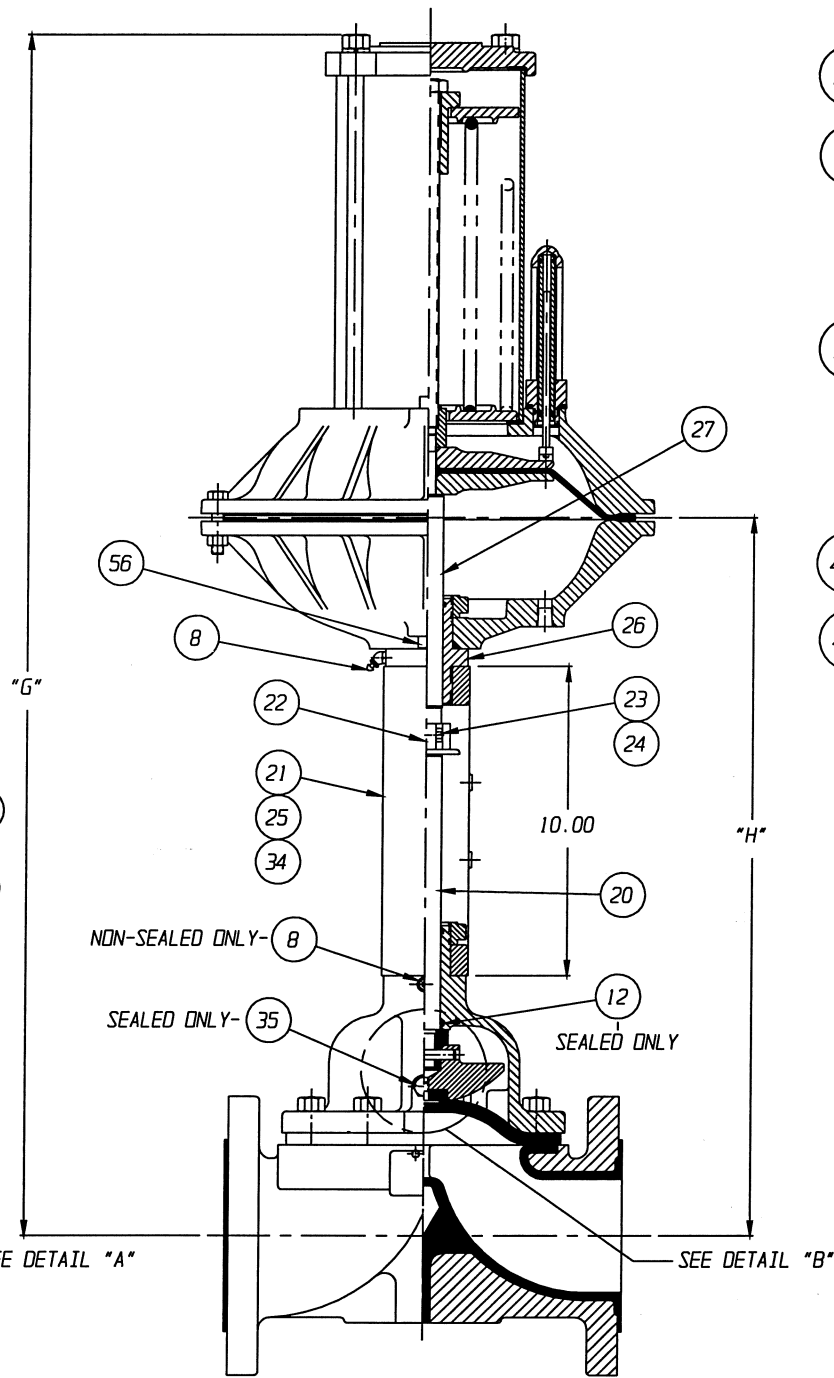


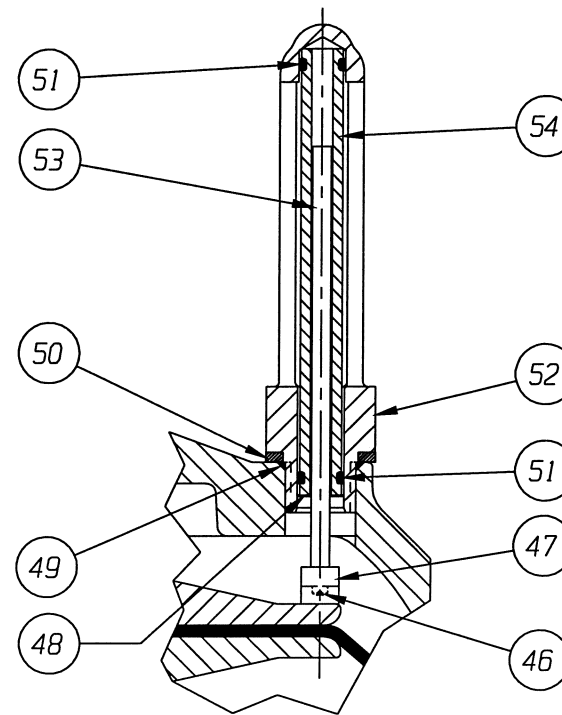
POSITION INDICATOR IS SHOWN 90° FROM TRUE POSITION



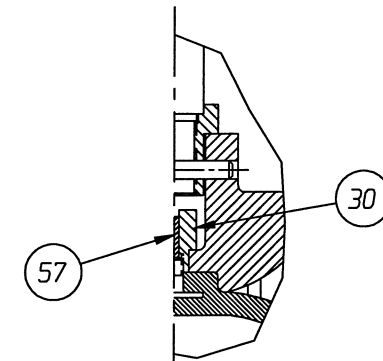
CLOSE COUPLED
 FURNISHED



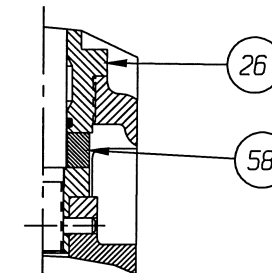
YOKE MOUNTED
 FURNISHED



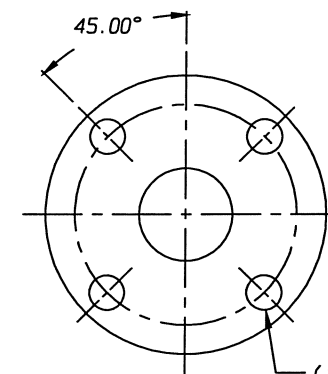
DETAIL: POSITION INDICATOR
(OPTIONAL)
 FURNISHED



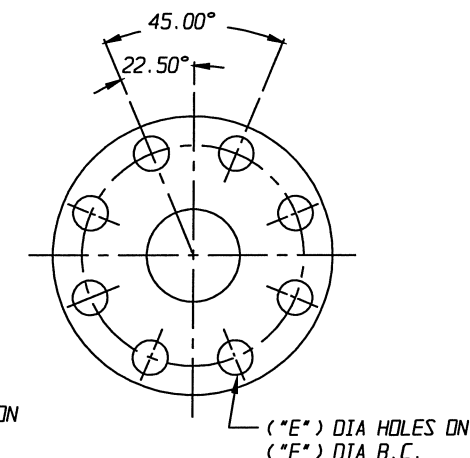
DETAIL "A"
WEIR 06.00
 FURNISHED



DETAIL "B"
YOKE MOUNT, WEIR 06.00
 FURNISHED



01.25 - 03.00 FLANGE
 FURNISHED



04.00 - 06.00 FLANGE
 FURNISHED

ENGRD VALVES ORDER: _____ ITEM: _____
SHEET _____ OF _____
FIGURE NO.: _____
CUSTOMER: _____
CUSTOMER P.O.: _____
ISSUED BY: _____ CERTIFIED BY: _____

UNLESS OTHERWISE SPECIFIED, DIMENSIONS NOT SHOWN IN BRACKETS [] ARE IN INCHES.
DIMENSIONS SHOWN IN BRACKETS [] ARE IN MILLIMETERS.

THIRD ANGLE PROJECTION	DATE	BY
	DWN	04/19/07 DJS
	CHKD	04/19/07 STD
	APVD	04/19/07 STD

VALVE ASSEMBLY
WEIR 01.25 THRU 06.00
#50 DIRECT ACTUATOR
WITH FLANGED ENDS
PLASTIC LINED

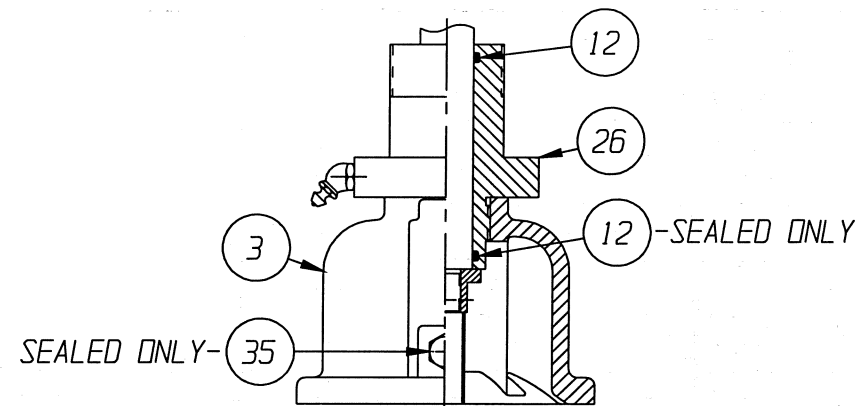
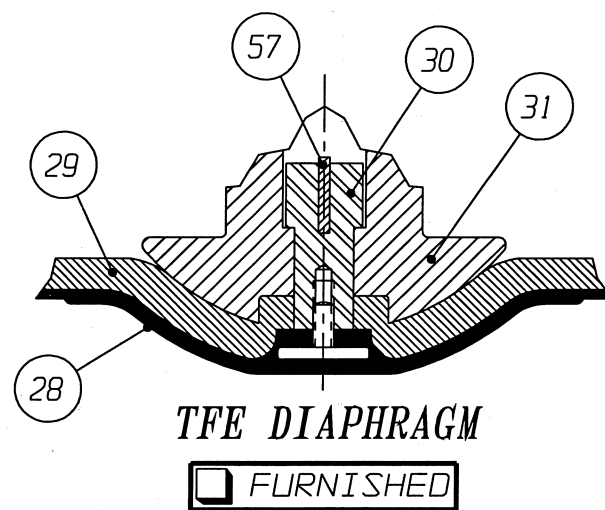
ITT Engineered Valves Group
Lancaster, PA USA
CS D 004352 REV C
SHEET 1 OF 2
www.engvalves.com

ECN# 10907

ALL DIMENSIONS SHOWN ON THIS DRAWING ARE FOR REFERENCE ONLY

VALVE SIZE	'A'	'B'	'C'	'D' DIA	'E' DIA	'F' DIA	'G'	'H'	'J'	'K'	QTY. BONNET STUDS/NUTS	O-RING
01.25	24.70	9.21	6.88	5.00	.500-13UNC	3.50	35.27	19.78	0.06	0.20	4	#116
01.50	(627.4)	(233.9)	(174.8)	(127.0)	0.62	(88.9)	(895.8)	(502.4)	(1.5)	(5.1)	4	
02.00	25.07	9.58	7.88	6.00	0.75	4.75	35.64	20.15	0.06	0.22	4	#214
02.50	(636.8)	(243.3)	(200.2)	(152.4)	(19.0)	(120.6)	(905.2)	(511.8)	(1.5)	(5.6)	4	
03.00	26.23	10.74	8.88	7.00	0.75	5.50	36.80	21.31	0.12	0.22	4	
04.00	(666.2)	(272.8)	(225.6)	(177.8)	(19.0)	(139.7)	(934.7)	(541.3)	(3.0)	(5.6)	8	
05.00	26.51	11.02	10.25	7.50	0.75	6.00	37.08	21.59	0.12	0.22	4	
06.00	(673.3)	(279.9)	(260.4)	(190.5)	(19.0)	(152.4)	(941.8)	(548.4)	(3.0)	(5.6)	10	

DIMENSIONS SHOWN IN () PARENTHESES ARE MILLIMETERS.



BONNET W/ADAPTER BUSHING
 02.50, 06.00 DI BONNET (E/34)
 01.25 - 06.00 SS BONNET (E/31)

FURNISHED

NOTE:

- △ 1. USED WITH 6.00" VALVE FOR VACUUM SERVICE ONLY.
- ▲ 2. ITEM #57 USED ONLY WITH 6.00" VALVE ONLY.
- 3. ITEMS #58 USED WITH 6.00" YOKE MOUNTED VALVE ONLY.
- 4. VALVE IS BI-DIRECTIONAL (NO FLOW ARROW).

ENGRD VALVES ORDER: _____ ITEM: _____
 SHEET _____ OF _____
 FIGURE NO.: _____
 CUSTOMER: _____
 CUSTOMER P.O.: _____
 ISSUED BY: _____ CERTIFIED BY: _____

ECN# 10907

* RECOMMENDED SPARE PARTS

UNLESS OTHERWISE SPECIFIED, DIMENSIONS NOT SHOWN IN BRACKETS [] ARE IN INCHES. DIMENSIONS SHOWN IN BRACKETS [] ARE IN MILLIMETERS.

THIRD ANGLE PROJECTION	DATE	BY
	DWN 04/19/07	DJS
	CHKD 04/19/07	STD
	APVD 04/19/07	STD

VALVE ASSEMBLY
 WEIR 01.25 THRU 06.00
 #50 DIRECT ACTUATOR
 WITH FLANGED ENDS
 PLASTIC LINED

ITT Engineered Valves Group
 Lancaster, PA USA

CS D 004352 REV C
 SHEET 2 OF 2

www.engvalves.com

LIST OF PARTS			
ITEM	DESCRIPTION	MATERIAL	QTY.
1	BODY, FLANGED PLASTIC LINED	-	1
* 2	DIAPHRAGM	-	1
3	BONNET, ADAPTER	-	1
4	STUDS	-	SEE CHARTS
5	NUTS	-	SEE CHARTS
6	COMPRESSOR, F/ ELASTOMER DIAPHRAGM	-	1
7	PIN, SPIROL	STN. STL. TYPE 302	1
8	FITTING, LUBE	-	1
9	SPINDLE, VALVE	STN. STL. A-582, TYPE 303	1
* 10	O-RING #326	BUNA-N	1
11	NUT, ADAPTER BUSHING	M.I. A-47, GR. 32510	AR
* 12	O-RING 'SEE CHART'	BUNA-N	AR
13	COVER, LOWER	ALUMINUM	1
* 14	DIAPHRAGM, AIR MOTOR	BUNA-N	1
15	COVER, UPPER	ALUMINUM	1
16	PLATE, ACTUATOR	C.I. A-126, CL. B	2
17	NUT, HEX JAM	CAR. STL.	1
18	SCREW, HEX HD. CAP	CAR. STL.	16
19	NUT, HEX	CAR. STL.	16
20	SPINDLE, VALVE YOKE	STN. STL. A-582, TYPE 303	1
21	YOKE	D.I. A-395, GR. 60-40-18	1
22	COUPLING, HALF	STN. STL. A-351, GR. CF8	2
23	SCREW, HEX HD. CAP	CAR. STL.	2
24	NUT, HEX	CAR. STL.	2
25	SCALE, INDICATING	STN. STL.	1
26	BUSHING, ADAPTER	-	AR
27	SPINDLE, ACTUATOR	STN. STL. A-582, TYPE 302	1
* 28	DIAPHRAGM, PTFE	R2	1
* 29	CUSHION, BACKING	ELASTOMER	1
30	NUT, TUBE	BRASS B-16, C36000 H02	1
31	COMPRESSOR, F/ PTFE DIAPHRAGM	-	1
32	PLUG, PIPE	CAR. STL. A-181, GR. 1	1
33	PLATE, IDENTIFICATION	STN. STL. A-240, TYPE 304	1
34	SCREW, DRIVE TYPE U	CAR. STL. SAE GR. 2	4
35	PLUG, VENT	STN. STL. TYPE 416	1
36	GASKET	BUNA-N	2
37	SEAT, SPRING	D.I. A-395, GR. 60-40-18	2
38	ROD, SPRING	CAR. STL. A-108, GR. 1008	1
39	SPRING NO. 102A	STEEL	1
40	BUSHING, ADJUSTING	M.I. A47, GR. 32510	1
41	NUT, HEX.	STEEL	4
42	WASHER, SPRINGLOCK	STEEL	4
43	COVER, SPRING	C.I. A-126, CL. C	1
44	COLUMN	CAR. STL. A-108, GR. 12L14	4
45	HOUSING, SPRING	CAR. STL. A-513, TYPE 1 MT	1
46	SCREW, MACHINE FILLISTER HD.	STN. STL. 18-8	1
47	MAGNET, CRUCIBLE U-181	-	1
48	RING, RETAINING	STEEL	1
49	O-RING #115	BUNA-N	1
50	SPACER, INDICATOR HOUSING	ALUMINUM B-211	1
* 51	O-RING #110	BUNA-N	2
* 52	HOUSING, INDICATOR	ALUMINUM B-26	1
* 53	ROD, INDICATOR	ALUMINUM B-211	1
54	TUBE, INDICATOR	PLASTIC	1
△ 55	SPRING NO. 94	STEEL	1
56	PLUG, PIPE	PLASTIC	1
▲ 57	KEY, TUBE NUT	BRASS B-36, C26000	1
● 58	SPACER	CAR. STL. A-108 GR. 12L14	1