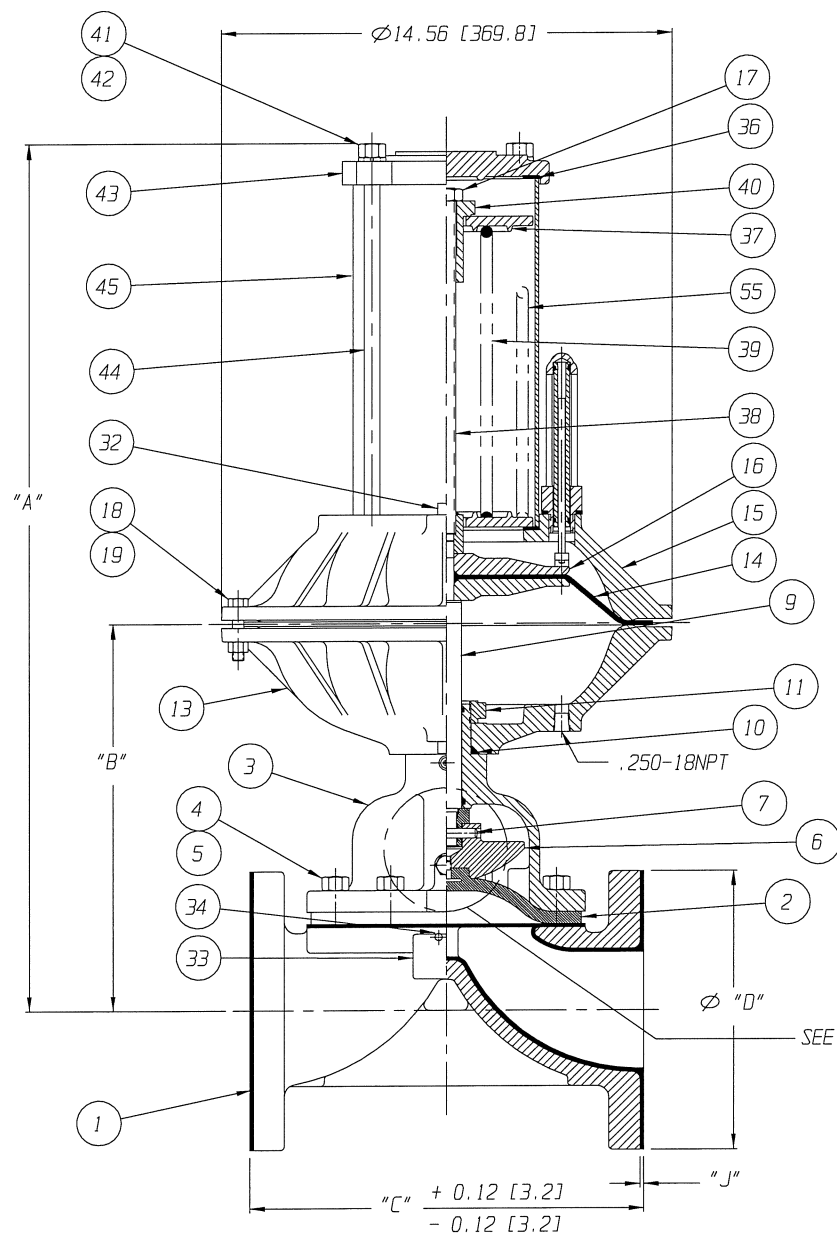
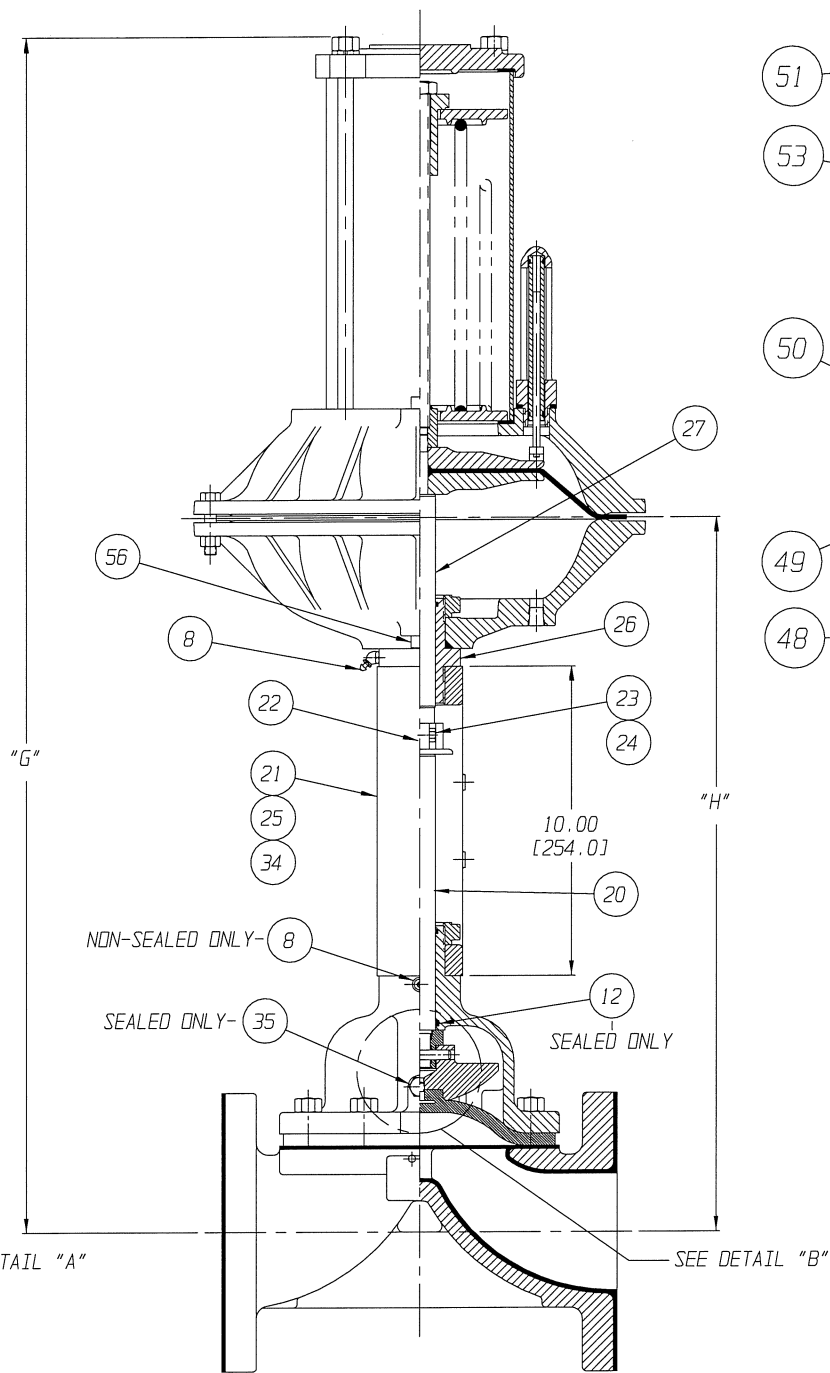


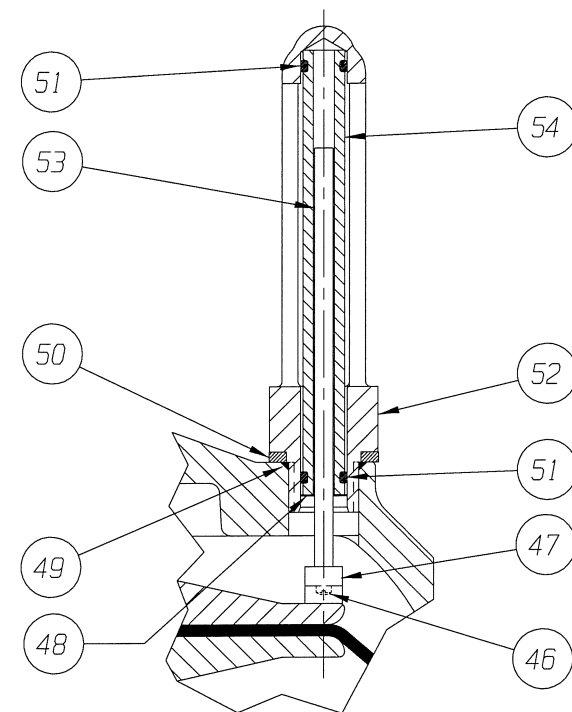
POSITION INDICATOR IS SHOWN 90° FROM TRUE POSITION



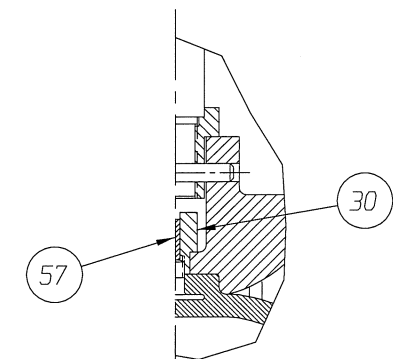
CLOSE COUPLED
 FURNISHED



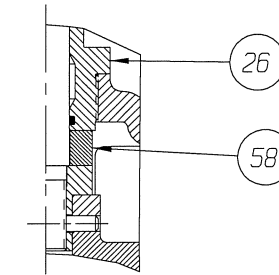
Yoke MOUNTED
 FURNISHED



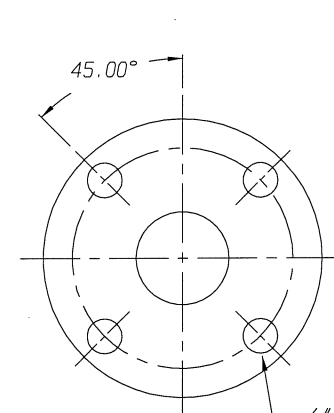
DETAIL: POSITION INDICATOR (OPTIONAL)
 FURNISHED



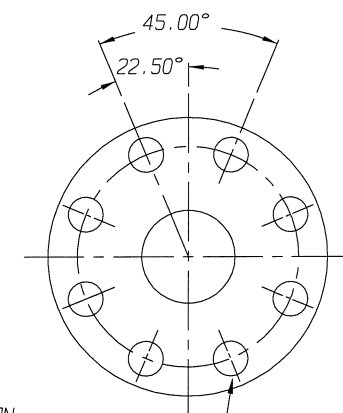
DETAIL "A"
 WEIR 06.00
 FURNISHED



DETAIL "B"
 YOKE MOUNT, WEIR 06.00
 FURNISHED



01.25 - 03.00 FLANGE
 FURNISHED

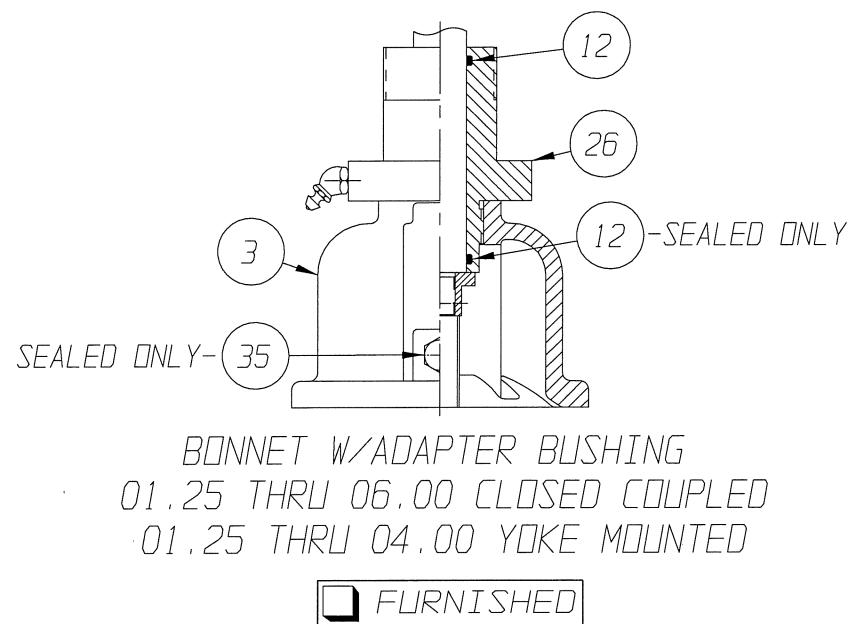
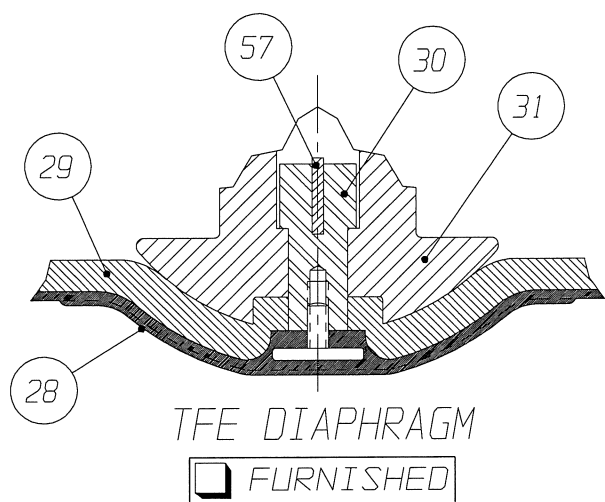


04.00 & 06.00 FLANGE
 FURNISHED

UNLESS OTHERWISE SPECIFIED, DIMENSIONS NOT SHOWN IN BRACKETS [] ARE IN INCHES. DIMENSIONS SHOWN IN BRACKETS [] ARE IN MILLIMETERS.

ENGRD VALVES ORDER: -	ITEM: -	THIRD ANGLE PROJECTION	DATE	BY	VALVE ASSEMBLY WEIR 01.25 THRU 06.00 #50 DIRECT ACTUATOR WITH FLANGED ENDS RUBBER LINED		Engined Valves www.engvalves.com	
FIGURE NO.: -			DWN 07/25/97	JRD				
CUSTOMER: -			CHKD 07/25/97	JLW				
CUSTOMER P.O.: -			APVD 07/25/97	KEH				
		ALL DIMENSIONS SHOWN ON THIS DRAWING ARE FOR REFERENCE ONLY	APVD 07/25/97	KEH	MASTER DWG: 004353-1/2/B	ECN# 2235	ISSUED BY: -	CERT BY: -
						000000-000	SHEET 1 OF 2	REV -

VALVE SIZE	'A'	'B'	'C'	'D' DIA	'E' DIA	'F' DIA	'G'	'H'	'J'	QTY. BONNET CAP SCREWS STUDS/NUTS	O-RING
01.25	24.76 [628.9]	9.27 [235.4]	6.74 [171.2]	5.00 [127.0]	0.62 [15.7]	3.50 [88.9]	35.33 [897.4]	19.84 [503.9]	0.12 [3.0]	4	#116
01.50						3.88 [98.5]				4	
02.00	25.31 [642.9]	9.82 [249.4]	7.74 [196.6]	6.00 [152.4]	0.75 [19.0]	4.75 [120.6]	35.88 [911.3]	20.39 [517.9]	0.12 [3.0]	4	#214
02.50	26.23 [666.2]	10.74 [272.8]	8.74 [222.0]	7.00 [177.8]	0.75 [19.0]	5.50 [139.7]	36.80 [934.7]	21.31 [541.3]	0.12 [3.0]	4	
03.00	26.76 [679.7]	11.27 [286.3]	10.24 [260.1]	7.50 [190.5]	0.75 [19.0]	6.00 [152.4]	37.33 [948.2]	21.84 [554.7]	0.12 [3.0]	4	
04.00	28.11 [714.0]	12.62 [320.5]	12.74 [323.6]	9.00 [228.6]	0.75 [19.0]	7.50 [190.5]	38.68 [982.5]	23.19 [589.0]	0.12 [3.0]	8	
06.00	31.46 [799.1]	15.97 [405.6]	16.38 [416.0]	11.00 [279.4]	0.88 [22.3]	9.50 [241.3]	42.03 [1067.6]	26.54 [674.1]	0.19 [4.8]	10	



NOTE:
△ 1. USED WITH 6.00" VALVE FOR VACUUM SERVICE ONLY.
▲ 2. ITEM #57 USED ONLY WITH 6.00" VALVE ONLY.
● 3. ITEMS #58 USED WITH 6.00" YOKE MOUNTED VALVE ONLY.

LIST OF PARTS			
ITEM	DESCRIPTION	MATERIAL	QTY.
1	BODY, FLANGED RUBBER LINED	-	1
* 2	DIAPHRAGM	-	1
3	BONNET, ADAPTER	-	1
4	HEX, CAP SCREWS OR STUDS	-	SEE CHARTS
5	NUTS	-	SEE CHARTS
6	COMPRESSOR, F/ ELASTOMER DIAPHRAGM	-	1
7	PIN, SPIROL	STN. STL. TYPE 302	1
8	FITTING, LUBE	-	1
9	SPINDLE, VALVE	STN. STL. A-582, TYPE 303	1
* 10	O-RING #326	BUNA-N	1
11	NUT, ADAPTER BUSHING	M.I. A-47, GR. 32510	AR
* 12	O-RING 'SEE CHART'	BUNA-N	AR
13	COVER, LOWER	ALUMINUM	1
* 14	DIAPHRAGM, AIR MOTOR	BUNA-N	1
15	COVER, UPPER	ALUMINUM	1
16	PLATE, ACTUATOR	C.I. A-126, CL. B	2
17	NUT, HEX JAM	CAR. STL.	1
18	SCREW, HEX HD. CAP	CAR. STL.	16
19	NUT, HEX	CAR. STL.	16
20	SPINDLE, VALVE YOKE	STN. STL. A-582, TYPE 303	1
21	YOKE	D.I. A-395, GR. 60-40-18	1
22	COUPLING, HALF	STN. STL. A-351, GR. CFB	2
23	SCREW, HEX HD. CAP	CAR. STL.	2
24	NUT, HEX	CAR. STL.	2
25	SCALE, INDICATING	STN. STL.	1
26	BUSHING, ADAPTER	-	AR
* 27	SPINDLE, ACTUATOR	STN. STL. A-582, TYPE 302	1
* 28	DIAPHRAGM, PTFE	R2	1
* 29	CUSHION, BACKING	ELASTOMER	1
30	NUT, TUBE	BRASS B-16, C36000 H02	1
31	COMPRESSOR, F/ PTFE DIAPHRAGM	-	1
32	PLUG, PIPE	CAR. STL. A-181, GR. 1	1
33	PLATE, IDENTIFICATION	STN. STL. A-240, TYPE 304	1
34	SCREW, DRIVE TYPE U	CAR. STL. SAE GR. 2	4
35	PLUG, VENT	STN. STL. TYPE 416	1
36	GASKET	BUNA-N	2
37	SEAT, SPRING	D.I. A-395, GR. 60-40-18	2
38	ROD, SPRING	CAR. STL. A-108, GR. 1008	1
39	SPRING NO. 102A	STEEL	1
40	BUSHING, ADJUSTING	M.I. A47, GR. 32510	1
41	NUT, HEX.	STEEL	4
42	WASHER, SPRINGLOCK	STEEL	4
43	COVER, SPRING	C.I. A-126, CL. C	1
44	COLUMN	CAR. STL. A-108, GR. 12L14	4
45	HOUSING, SPRING	CAR. STL. A-513, TYPE 1 MT	1
46	SCREW, MACHINE FILLISTER HD.	STN. STL. 18-8	1
47	MAGNET, CRUCIBLE U-181	-	1
48	RING, RETAINING	STEEL	1
49	O-RING #115	BUNA-N	1
50	SPACER, INDICATOR HOUSING	ALUMINUM B-211	1
* 51	O-RING #110	BUNA-N	2
* 52	HOUSING, INDICATOR	ALUMINUM B-26	1
* 53	ROD, INDICATOR	ALUMINUM B-211	1
54	TUBE, INDICATOR	PLASTIC	1
△ 55	SPRING NO. 94	STEEL	1
56	PLUG, PIPE	PLASTIC	1
▲ 57	KEY, TUBE NUT	BRASS B-36, C26000	1
● 58	SPACER	CAR. STL. A-108 GR. 12L14	1

UNLESS OTHERWISE SPECIFIED, DIMENSIONS NOT SHOWN IN BRACKETS [] ARE IN INCHES. DIMENSIONS SHOWN IN BRACKETS [] ARE IN MILLIMETERS.

ENGRD VALVES ORDER: -	ITEM: -	THIRD ANGLE PROJECTION	DATE	BY	VALVE ASSEMBLY WEIR 01.25 THRU 06.00 #50 DIRECT ACTUATOR WITH FLANGED ENDS RUBBER LINED	 ITT Engineered Valves www.engvalves.com
FIGURE NO.: -			DWN 07/25/97	JRD		
CUSTOMER: -			CHKD 07/25/97	JLW		D 000000-000 SHEET 2 OF 2 REV -
CUSTOMER P.O.: -		ALL DIMENSIONS SHOWN ON THIS DRAWING ARE FOR REFERENCE ONLY	APVD 07/25/97	KEH	MASTER DWG: 004353-2/2/B IECN# 2235	