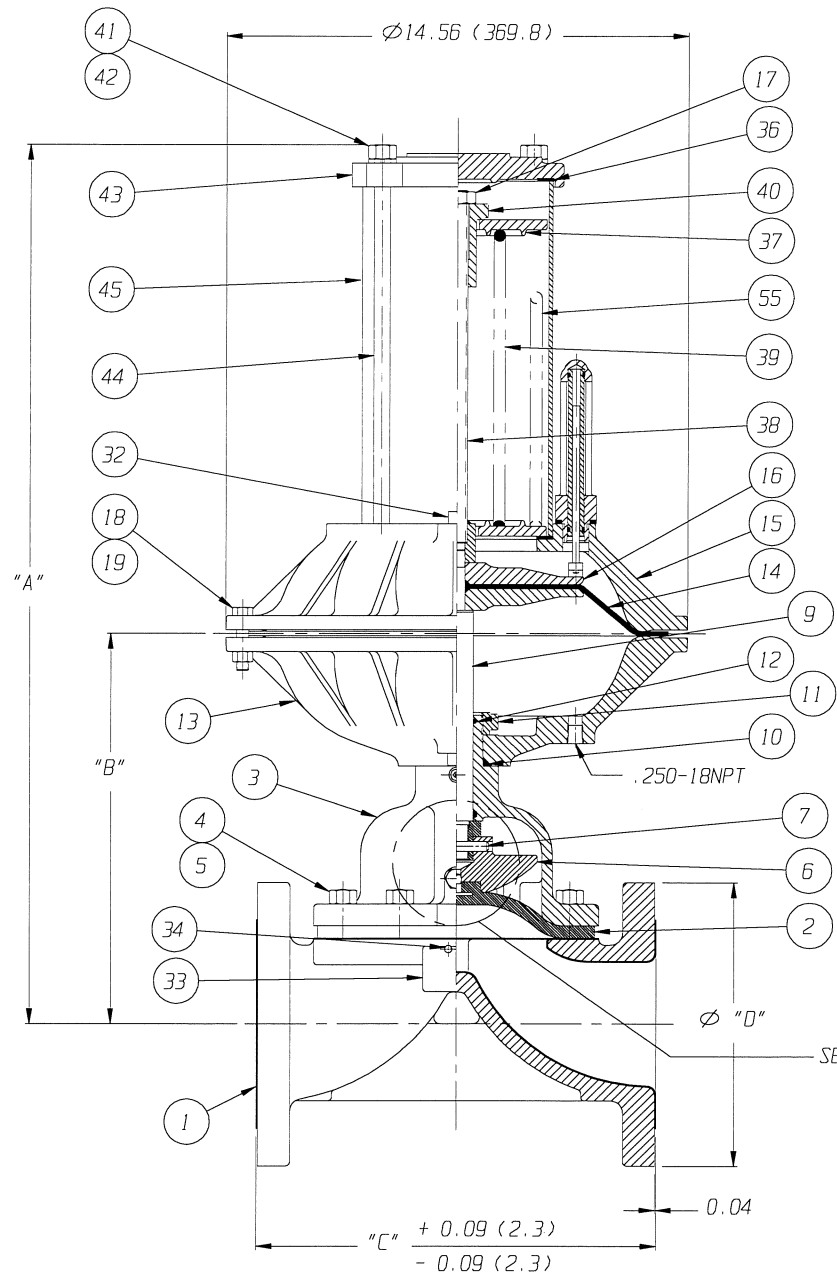
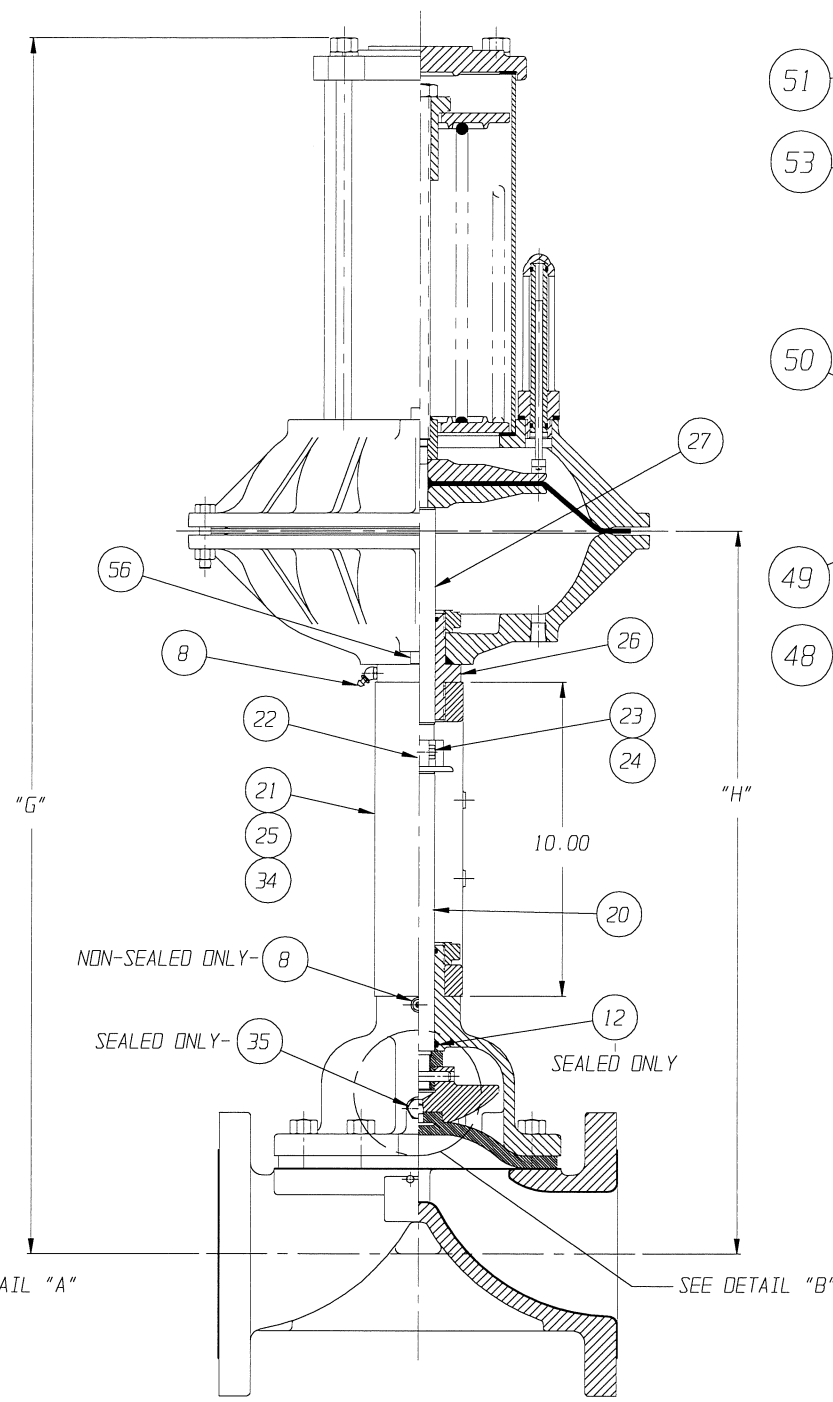


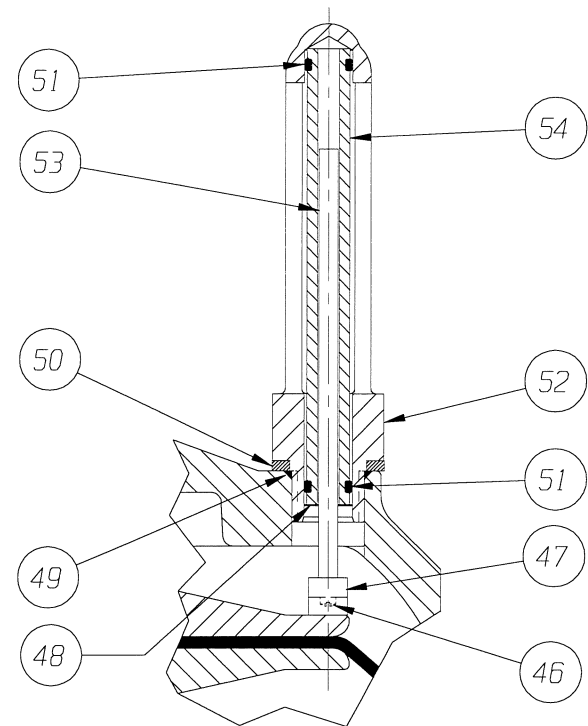
POSITION INDICATOR IS SHOWN 90° FROM TRUE POSITION



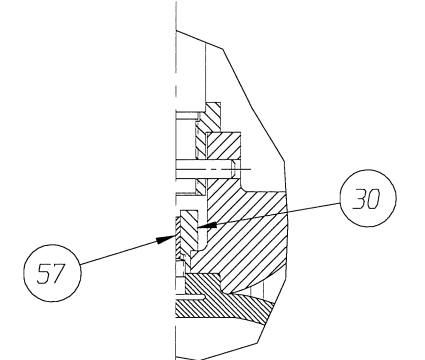
CLOSE COUPLED
 FURNISHED



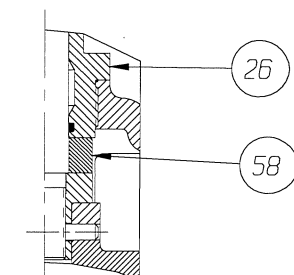
YOKE MOUNTED
 FURNISHED



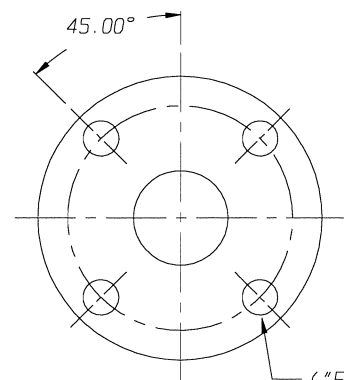
DETAIL: POSITION INDICATOR (OPTIONAL)
 FURNISHED



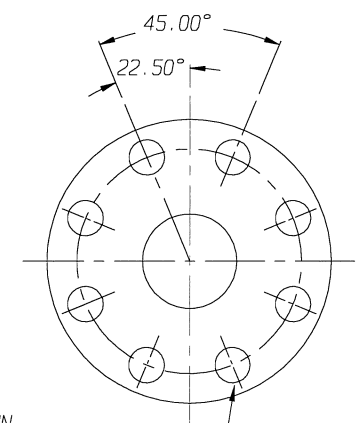
DETAIL "A" WEIR 06.00
 FURNISHED



DETAIL "B" YOKE MOUNT, WEIR 06.00
 FURNISHED



01.25 - 03.00 FLANGE
 FURNISHED



04.00 & 06.00 FLANGE
 FURNISHED

ECN# 146

ITT ENGRD VLVS ORDER: -
 CUSTOMER: -
 CUSTOMER P.O.: -
 ISSUED BY: _____ CERTIFIED BY: _____

REV	DATE	ECN NBR	BY	CHKD	APVD	DATE	BY
-	-	-	-	-	-	DWN	11/12/96
B	07/25/97	2235	JRD	JLW	KEH	CHKD	11/14/96
A	02/17/97	146	JRD	JLW	RRK	APVD	11/15/96

VALVE ASSEMBLY
 WEIR 01.25 THRU 06.00
 #50 DIRECT ACTUATOR
 WITH FLANGED ENDS
 GLASS LINED

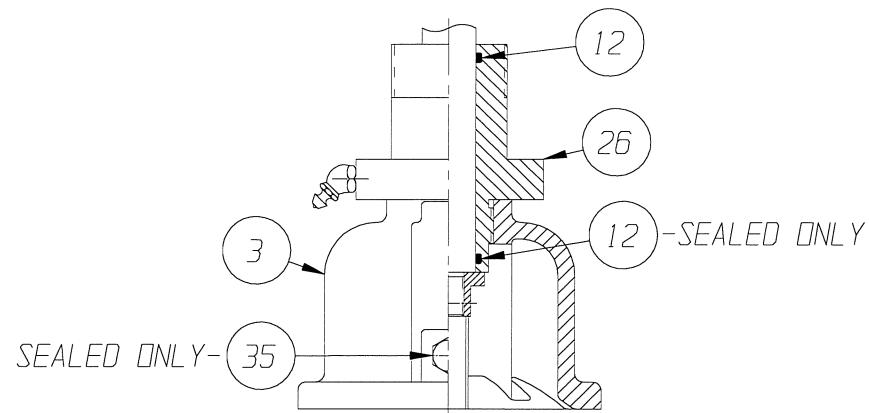
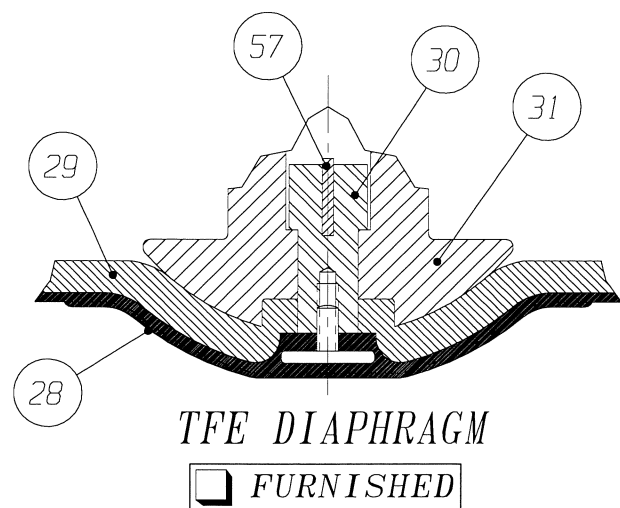
ITT Engineered Valves

ITT Fluid Technology Corporation
 Lancaster, Pa

CS D 004354 REV B
 SHEET 1 OF 2

VALVE SIZE	'A'	'B'	'C'	'D' DIA	'E' DIA	'F' DIA	'G'	'H'	QTY. BONNET CAP SCREWS STUDS/NUTS	O-RING
01.25	24.68 (626.9)	9.19 (233.4)	6.62 (168.1)	5.00 (127.0)	0.62 (15.7)	3.50 (88.9)	35.25 (895.3)	19.76 (501.9)	4	#116
01.50						3.88 (98.5)			4	
02.00	25.23 (640.8)	9.74 (247.4)	7.62 (192.5)	6.00 (152.4)	0.75 (19.0)	4.75 (120.6)	35.80 (909.3)	20.31 (515.9)	4	#214
02.50	26.15 (664.2)	10.66 (270.8)	8.62 (218.9)	7.00 (177.8)	0.75 (19.0)	5.50 (139.7)	36.72 (932.7)	21.23 (539.2)	4	
03.00	26.68 (677.7)	11.19 (284.2)	10.12 (257.0)	7.50 (190.5)	0.75 (19.0)	6.00 (152.4)	37.25 (946.1)	21.76 (552.7)	4	
04.00	28.03 (712.0)	12.54 (318.5)	12.62 (320.5)	9.00 (228.6)	0.75 (19.0)	7.50 (190.5)	38.60 (980.4)	23.11 (587.0)	8	
06.00	31.38 (797.1)	15.89 (403.6)	16.12 (409.4)	11.00 (279.4)	0.88 (22.3)	9.50 (241.3)	41.95 (1065.5)	26.46 (672.1)	10	

DIMENSIONS SHOWN IN () PARENTHESES ARE MILLIMETERS.



BONNET W/ADAPTER BUSHING
01.25 THRU 06.00 CLOSED COUPLED
01.25 THRU 04.00 YOKE MOUNTED

FURNISHED

NOTE:

- △ 1. USED WITH 6.00" VALVE FOR VACUUM SERVICE ONLY.
- ▲ 2. ITEM #57 USED ONLY WITH 6.00" VALVE ONLY.
- 3. ITEMS #58 USED WITH 6.00" YOKE MOUNTED VALVE ONLY.

LIST OF PARTS			
ITEM	DESCRIPTION	MATERIAL	QTY.
1	BODY, FLANGED	-	1
* 2	DIAPHRAGM	-	1
3	BONNET, ADAPTER	-	1
4	HEX, CAP SCREWS OR STUDS	-	SEE CHARTS
5	NUTS	-	SEE CHARTS
6	COMPRESSOR, F/ ELASTOMER DIAPHRAGM	-	1
7	PIN, SPIROL	STN. STL. TYPE 302	1
8	FITTING, LUBE	-	1
9	SPINDLE, VALVE	STN. STL. A-582, TYPE 303	1
* 10	O-RING #326	BUNA-N	1
11	NUT, ADAPTER BUSHING	M.I. A-47, GR. 32510	AR
* 12	O-RING 'SEE CHART'	BUNA-N	AR
13	COVER, LOWER	ALUMINUM	1
* 14	DIAPHRAGM, AIR MOTOR	BUNA-N	1
* 15	COVER, UPPER	ALUMINUM	1
16	PLATE, ACTUATOR	C.I. A-126, CL. B	2
17	NUT, HEX JAM	CAR. STL.	1
18	SCREW, HEX HD. CAP	CAR. STL.	16
19	NUT, HEX	CAR. STL.	16
20	SPINDLE, VALVE YOKE	STN. STL. A-582, TYPE 303	1
21	YOKE	D.I. A-395, GR. 60-40-18	1
22	COUPLING, HALF	STN. STL. A-351, GR. CFB	2
23	SCREW, HEX HD. CAP	CAR. STL.	2
24	NUT, HEX	CAR. STL.	2
25	SCALE, INDICATING	STN. STL.	1
26	BUSHING, ADAPTER	-	AR
27	SPINDLE, ACTUATOR	STN. STL. A-582, TYPE 302	1
* 28	DIAPHRAGM, PTFE	R2	1
* 29	CUSHION, BACKING	ELASTOMER	1
30	NUT, TUBE	BRASS B-16, C36000 H02	1
31	COMPRESSOR, F/ PTFE DIAPHRAGM	-	1
32	PLUG, PIPE	CAR. STL. A-181, GR. 1	1
33	PLATE, IDENTIFICATION	STN. STL. A-240, TYPE 304	1
34	SCREW, DRIVE TYPE U	CAR. STL. SAE GR. 2	4
35	PLUG, VENT	STN. STL. TYPE 416	1
36	GASKET	BUNA-N	2
37	SEAT, SPRING	D.I. A-395, GR. 60-40-18	2
38	ROD, SPRING	CAR. STL. A-108, GR. 1008	1
39	SPRING NO. 102A	STEEL	1
40	BUSHING, ADJUSTING	M.I. A47, GR. 32510	1
41	NUT, HEX.	STEEL	4
42	WASHER, SPRINGLOCK	STEEL	4
43	COVER, SPRING	C.I. A-126, CL. C	1
44	COLUMN	CAR. STL. A-108, GR. 12L14	4
45	HOUSING, SPRING	CAR. STL. A-513, TYPE 1 MT	1
46	SCREW, MACHINE FILLISTER HD.	STN. STL. 18-8	1
47	MAGNET, CRUCIBLE U-181	-	1
48	RING, RETAINING	STEEL	1
49	O-RING #115	BUNA-N	1
50	SPACER, INDICATOR HOUSING	ALUMINUM B-211	1
* 51	O-RING #110	BUNA-N	2
52	HOUSING, INDICATOR	ALUMINUM B-26	1
* 53	ROD, INDICATOR	ALUMINUM B-211	1
54	TUBE, INDICATOR	PLASTIC	1
△ 55	SPRING NO. 94	STEEL	1
56	PLUG, PIPE	PLASTIC	1
▲ 57	KEY, TUBE NUT	BRASS B-36, C26000	1
● 58	SPACER	CAR. STL. A-108 GR. 12L14	1

* RECOMMENDED SPARE PARTS

ITEM _____ SHEET _____ OF _____

ECN# 146

ITT ENGRD VLVS ORDER: -
 CUSTOMER: -
 CUSTOMER P.O.: -
 ISSUED BY: _____ CERTIFIED BY: _____

REV	DATE	ECN NBR	BY	CHKD	APVD	DATE	BY
-	-	-	-	-	-	DATE	BY
-	-	-	-	-	-	DWN	11/12/96 JRD
B	07/25/97	2235	JRD	JLW	KEH	CHKD	11/14/96 JLW
A	02/17/97	146	JRD	JLW	RRK		
						APVD	11/15/96 RRK

VALVE ASSEMBLY
WEIR 01.25 THRU 06.00
#50 DIRECT ACTUATOR
WITH FLANGED ENDS
GLASS LINED

ITT Engineered Valves
ITT Fluid Technology Corporation
Lancaster, Pa

CS D 004354 REV B
SHEET 2 OF 2