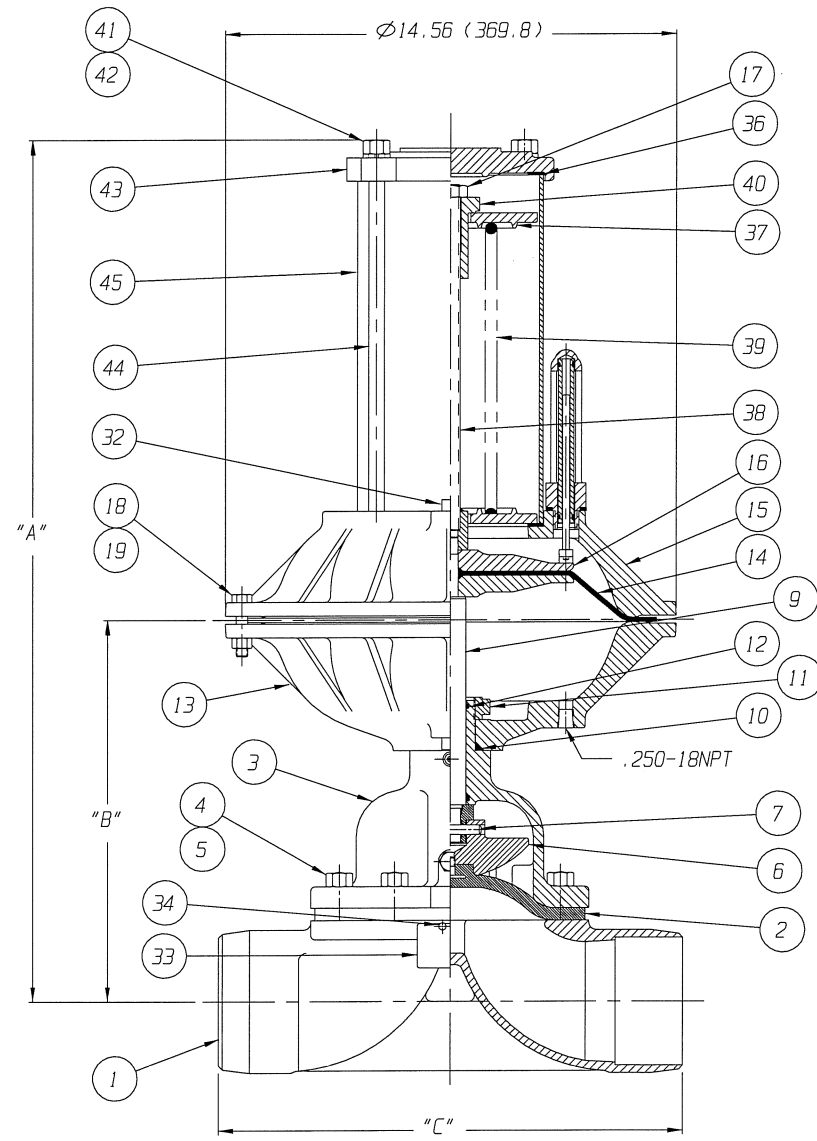
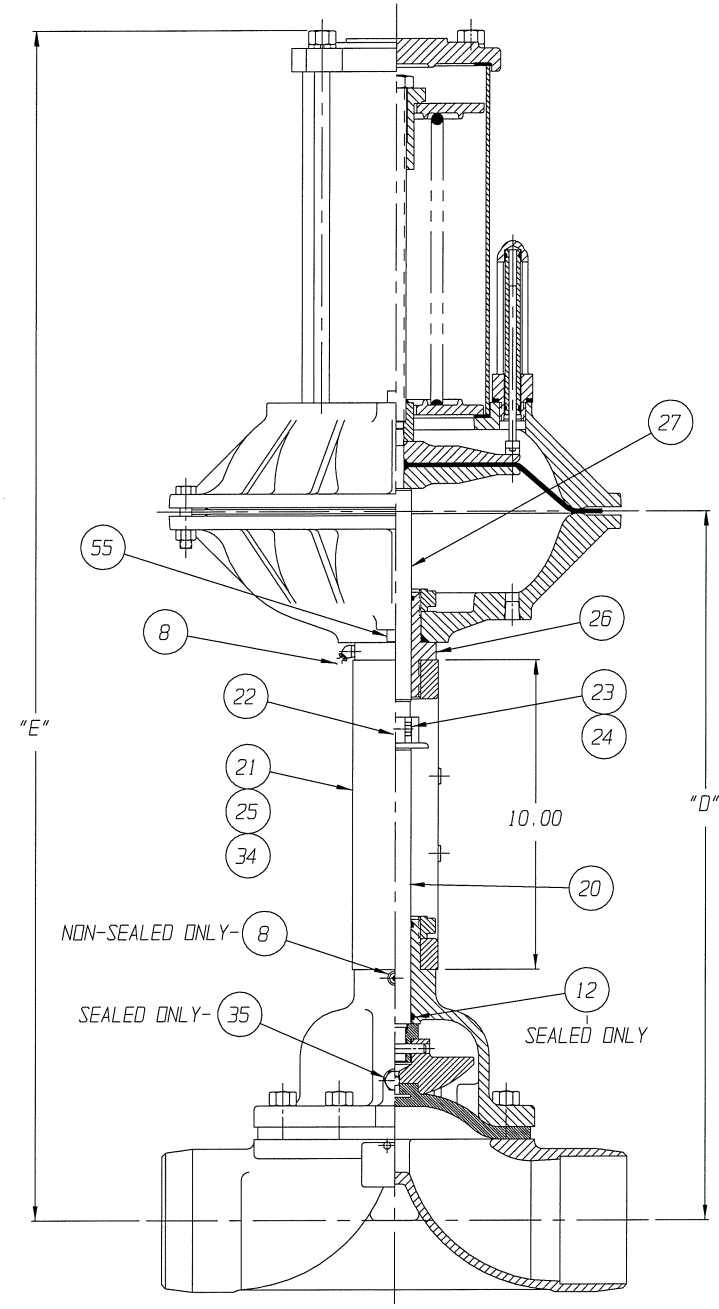


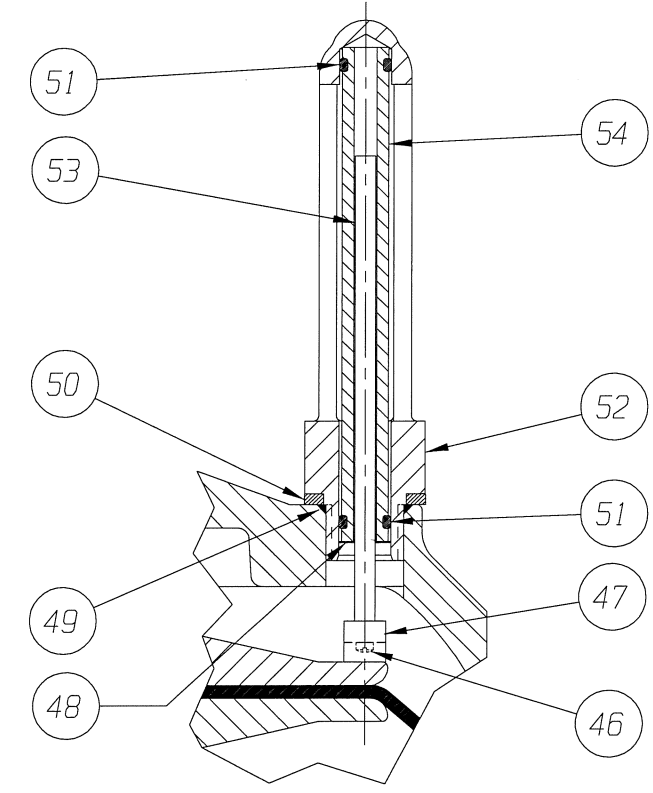
POSITION INDICATOR IS SHOWN 90° FROM TRUE POSITION



CLOSE COUPLED
 FURNISHED



YOKE MOUNTED
 FURNISHED



DETAIL: POSITION INDICATOR (OPTIONAL)
 FURNISHED

ECN# 146

ITT ENGRD VLVS ORDER: -
 CUSTOMER: -
 CUSTOMER P.O.: -
 ISSUED BY: _____ CERTIFIED BY: _____

REV	DATE	ECN NBR	BY	CHKD	APVD	DATE	BY
-	-	-	-	-	-	DWN	11/12/96 JRD
B	07/25/97	2235	JRD	JLW	KEH	CHKD	11/14/96 JLW
A	02/17/97	146	JRD	JLW	RRK	-	-
-	-	-	-	-	-	APVD	11/15/96 RRK

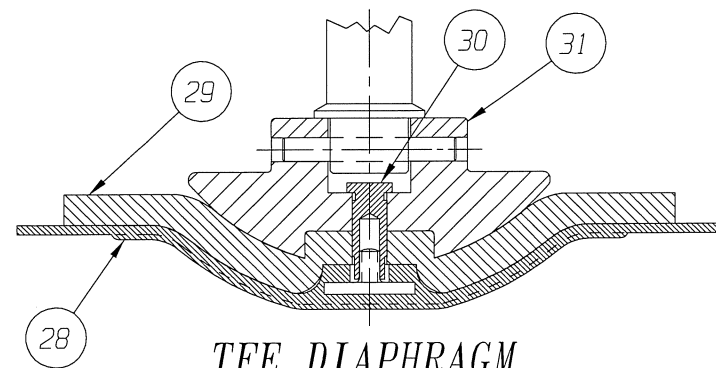
VALVE ASSEMBLY
 WEIR 01.50 & 02.00
 #50 DIRECT ACTUATOR
 WITH SOLDER ENDS

ITT Engineered Valves
 ITT Fluid Technology Corporation
 Lancaster, Pa

CS D 004356 SHEET 1 OF 2 REV B

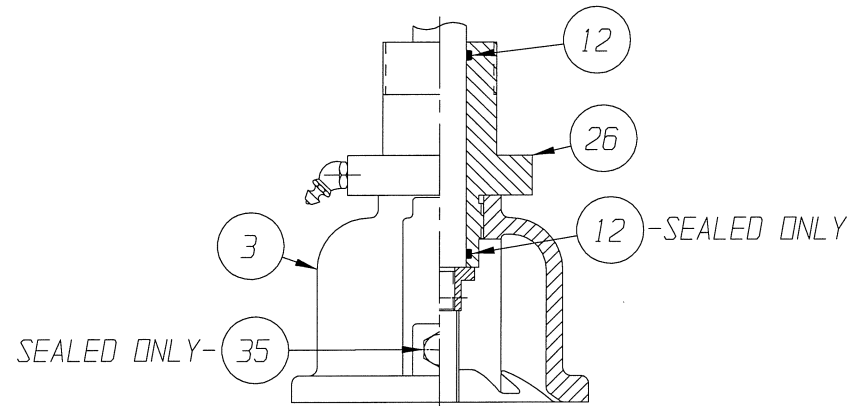
VALVE SIZE	'A'	'B'	'C'	'D'	'E'	O-RING
01.50	24.50 (622.3)	9.00 (228.6)	5.88 (149.3)	19.57 (497.1)	35.07 (890.8)	#116
02.00	24.94 (633.5)	9.45 (240.0)	7.38 (187.4)	20.02 (508.5)	35.51 (901.9)	

DIMENSIONS SHOWN IN () PARENTHESES ARE MILLIMETERS.



TFE DIAPHRAGM

FURNISHED



BONNET W/ADAPTER BUSHING

01.25 & 02.00

FURNISHED

LIST OF PARTS			
ITEM	DESCRIPTION	MATERIAL	QTY.
1	BODY, SOLDER ENDS	-	1
* 2	DIAPHRAGM	-	1
3	BONNET, ADAPTER	-	1
4	HEX, CAP SCREWS OR STUDS	-	4
5	NUTS	-	4
6	COMPRESSOR, F/ ELASTOMER DIAPHRAGM	-	1
7	PIN, SPIROL	STN. STL. TYPE 302	1
8	FITTING, LUBE	-	1
9	SPINDLE, VALVE	STN. STL. A-582, TYPE 303	1
* 10	O-RING #326	BUNA-N	1
11	NUT, ADAPTER BUSHING	M.I. A-47, GR. 32510	AR
* 12	O-RING 'SEE CHART'	BUNA-N	AR
13	COVER, LOWER	ALUMINUM	1
* 14	DIAPHRAGM, AIR MOTOR	BUNA-N	1
15	COVER, UPPER	ALUMINUM	1
16	PLATE, ACTUATOR	C.I. A-126, CL. B	2
17	NUT, HEX JAM	CAR. STL.	1
18	SCREW, HEX HD. CAP	CAR. STL.	16
19	NUT, HEX	CAR. STL.	16
20	SPINDLE, VALVE YOKE	STN. STL. A-582, TYPE 303	1
21	YOKE	D.I. A-395, GR. 60-40-18	1
22	COUPLING, HALF	STN. STL. A-351, GR. CFB	2
23	SCREW, HEX HD. CAP	CAR. STL.	2
24	NUT, HEX	CAR. STL.	2
25	SCALE, INDICATING	STN. STL.	1
26	BUSHING, ADAPTER	-	AR
27	SPINDLE, ACTUATOR	STN. STL. A-582, TYPE 302	1
* 28	DIAPHRAGM, PTFE	R2	1
* 29	CUSHION, BACKING	ELASTOMER	1
30	NUT, TUBE	BRASS B-16, C36000 H02	1
31	COMPRESSOR, F/ PTFE DIAPHRAGM	-	1
32	PLUG, PIPE	CAR. STL. A-181, GR. 1	1
33	PLATE, IDENTIFICATION	STN. STL. A-240, TYPE 304	1
34	SCREW, DRIVE TYPE U	CAR. STL. SAE GR. 2	4
35	PLUG, VENT	STN. STL. TYPE 416	1
36	GASKET	BUNA-N	2
37	SEAT, SPRING	D.I. A-395, GR. 60-40-18	2
38	ROD, SPRING	CAR. STL. A-108, GR. 1008	1
39	SPRING NO. 102A	STEEL	1
40	BUSHING, ADJUSTING	M.I. A47, GR. 32510	1
41	NUT, HEX.	STEEL	4
42	WASHER, SPRINGLOCK	STEEL	4
43	COVER, SPRING	C.I. A-126, CL. C	1
44	COLUMN	CAR. STL. A-108, GR. 12L14	4
45	HOUSING, SPRING	CAR. STL. A-513, TYPE 1 MT	1
46	SCREW, MACHINE FILLISTER HD.	STN. STL. 18-8	1
47	MAGNET, CRUCIBLE U-181	-	1
48	RING, RETAINING	STEEL	1
49	O-RING #115	BUNA-N	1
50	SPACER, INDICATOR HOUSING	ALUMINUM B-211	1
* 51	O-RING #110	BUNA-N	2
52	HOUSING, INDICATOR	ALUMINUM B-26	1
* 53	ROD, INDICATOR	ALUMINUM B-211	1
54	TUBE, INDICATOR	PLASTIC	1
55	PLUG, PIPE	PLASTIC	1

* RECOMMENDED SPARE PARTS

ITEM _____ SHEET ____ OF ____

ECN# 146

ITT ENGRD VLVS ORDER: _____
 CUSTOMER: _____
 CUSTOMER P.O.: _____
 ISSUED BY: _____ CERTIFIED BY: _____

-	-	-	-	-	-	DATE	BY
-	-	-	-	-	-	DWN	11/12/96 JRD
-	-	-	-	-	-	CHKD	11/14/96 JLW
B	07/25/97	2235	JRD	JLW	KEH	CHKD	11/14/96 JLW
A	02/17/97	146	JRD	JLW	RRK	APVD	11/15/96 RRK
REV	DATE	ECN NBR	BY	CHKD	APVD	APVD	11/15/96 RRK

VALVE ASSEMBLY
 WEIR 01.50 & 02.00
 #50 DIRECT ACTUATOR
 WITH SOLDER ENDS

ITT Engineered Valves
 ITT Fluid Technology Corporation
 Lancaster, Pa

CS D 004356 REV B
 SHEET 2 OF 2