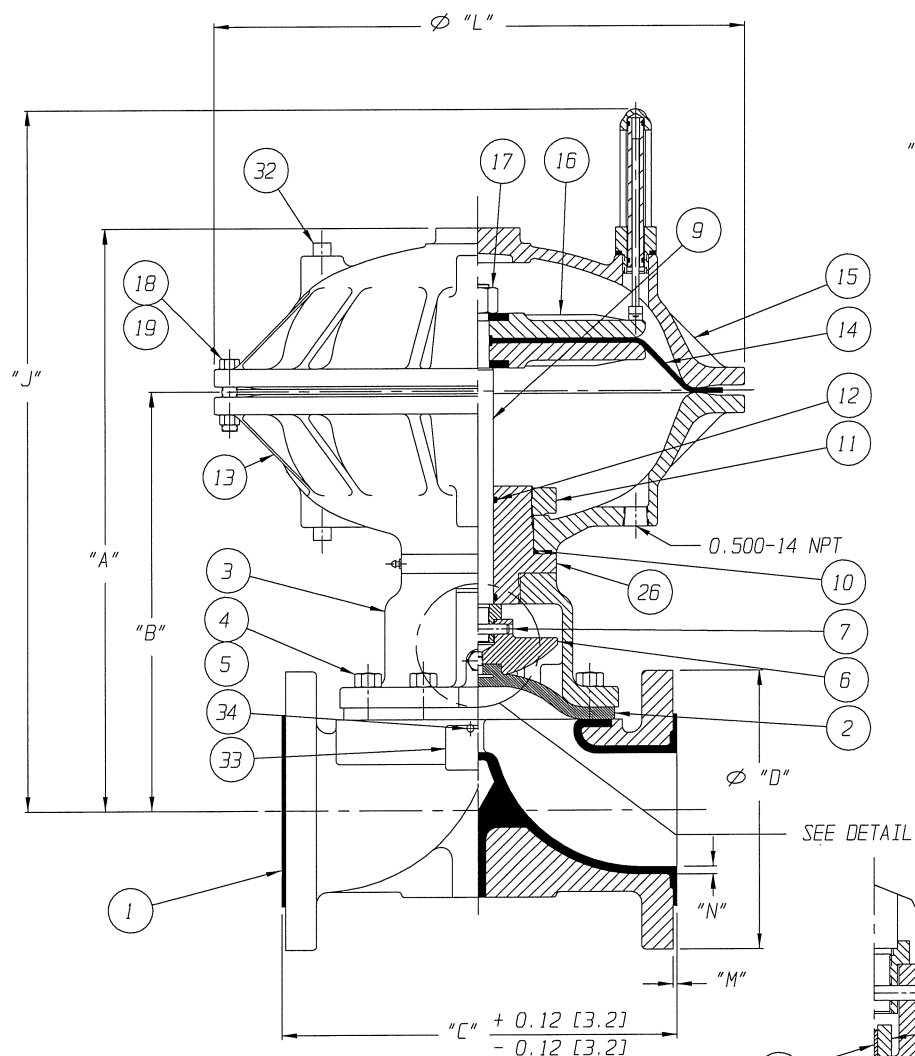


POSITION INDICATOR IS SHOWN 90° FROM TRUE POSITION

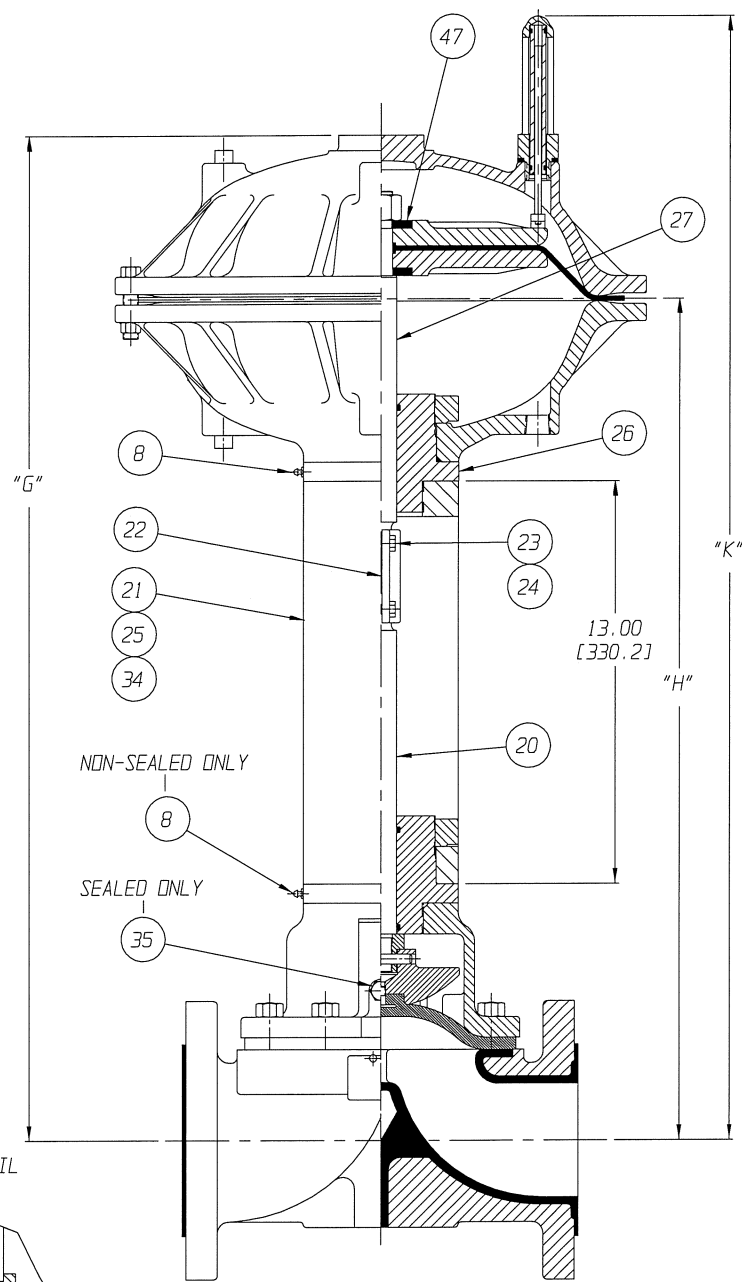


CLOSE COUPLED

FURNISHED

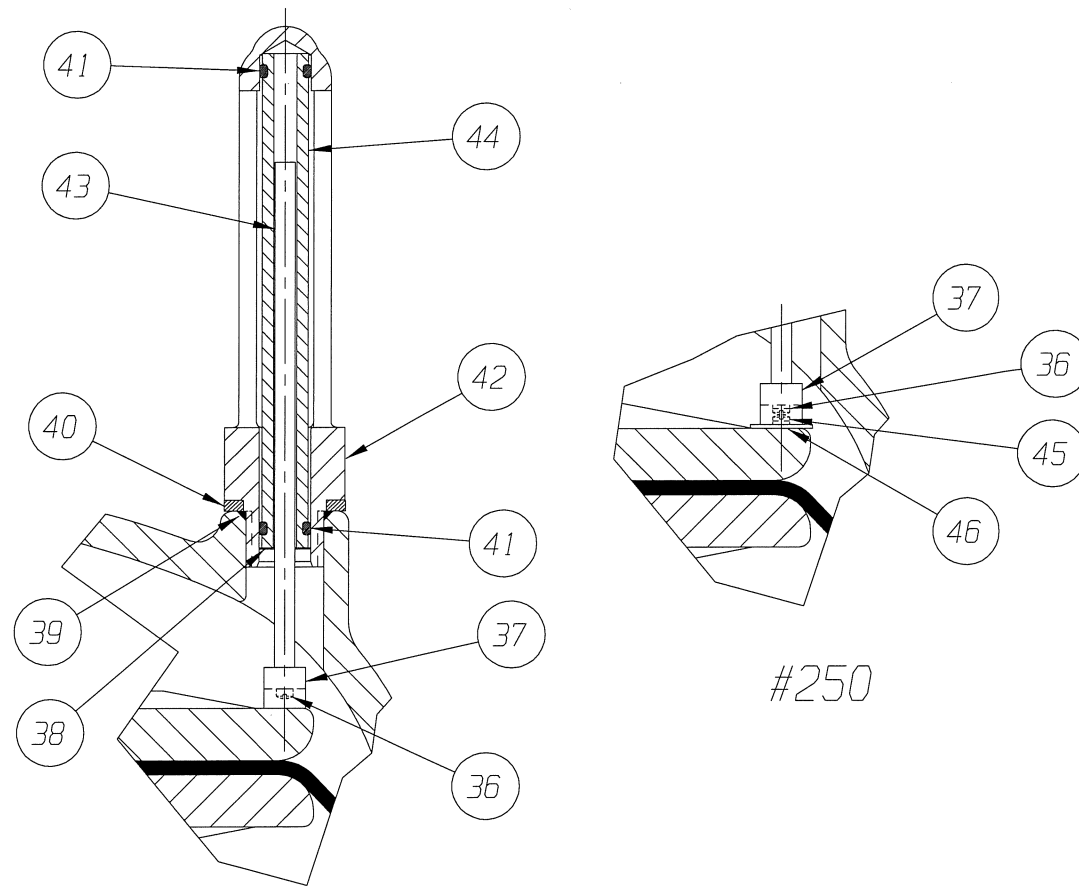
DETAIL WEIR 06.00 & 08.00

FURNISHED

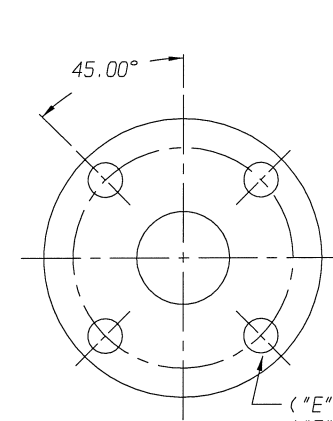


YOKES MOUNTED

FURNISHED

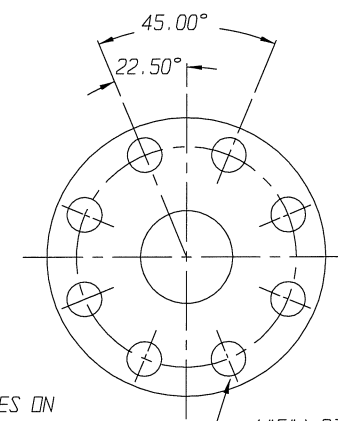


DETAIL: POSITION INDICATOR



02.50 & 03.00 FLANGE

FURNISHED



04.00 - 08.00 FLANGE

FURNISHED

UNLESS OTHERWISE SPECIFIED, DIMENSIONS NOT SHOWN IN BRACKETS [ ] ARE IN INCHES. DIMENSIONS SHOWN IN BRACKETS [ ] ARE IN MILLIMETERS.

ENGRD VALVES ORDER: -	ITEM: -	THIRD ANGLE PROJECTION	DATE	BY	VALVE ASSEMBLY
FIGURE NO.: -			DWN 01/08/97	JRD	WEIR 02.50 THRU 08.00
CUSTOMER: -			CHKD 01/24/97	JLW	#101 THRU #250 DOUBLE ACT
CUSTOMER P.O.: -			APVD 01/31/97	RRK	WITH FLANGED ENDS
		ALL DIMENSIONS SHOWN ON THIS DRAWING ARE FOR REFERENCE ONLY			PLASTIC LINED
					MASTER DWG: 004399-1/2/- ECN# 146

**ITT**

Engineered Valves  
www.engvalves.com

000000-000

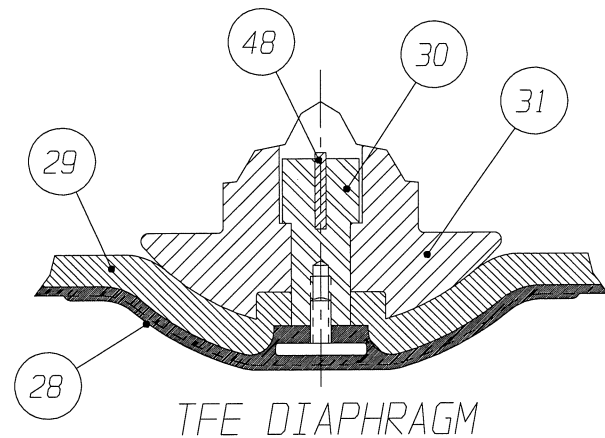
SHEET 1 OF 2

ISSUED BY: - CERT BY: -

# 101 AIR MOTOR														
VALVE SIZE	'A'	'B'	'C'	'D' DIA	'E' DIA	'F' DIA	'G'	'H'	"J"	"K"	"L"	"M"	"N"	QTY. BONNET CAP SCREWS STUDS/NUTS
02.50	16.40 [416.6]	11.12 [282.4]	8.94 [227.1]	7.00 [177.8]	0.75 [19.0]	5.50 [139.7]	30.02 [762.5]	24.75 [628.6]	20.23 [513.8]	33.85 [859.8]	17.12 [434.8]	0.12 [3.0]	0.22 [5.6]	4
03.00	17.02 [432.3]	11.73 [297.9]	10.38 [263.7]	7.50 [190.5]	0.75 [19.0]	6.00 [152.4]	30.64 [778.2]	25.35 [643.9]	20.85 [529.6]	34.47 [875.5]		0.12 [3.0]	0.22 [5.6]	4
04.00	18.38 [466.8]	13.09 [332.5]	12.88 [327.2]	9.00 [228.6]	0.75 [19.0]	7.50 [190.5]	32.00 [812.8]	26.71 [678.4]	22.21 [564.1]	35.83 [910.1]		0.12 [3.0]	0.25 [6.4]	8
06.00	21.12 [536.4]	15.82 [401.8]	16.38 [416.0]	11.00 [279.4]	0.88 [22.3]	9.50 [241.3]	34.73 [882.1]	29.44 [747.8]	24.94 [633.5]	38.56 [979.4]		0.12 [3.0]	0.23 [5.8]	10
08.00	25.23 [640.8]	19.94 [506.5]	20.88 [530.4]	13.53 [343.6]	0.88 [22.4]	11.75 [298.4]	38.85 [986.8]	33.56 [852.4]	29.06 [738.1]	42.68 [1084.1]		0.12 [3.0]	0.28 [7.1]	14

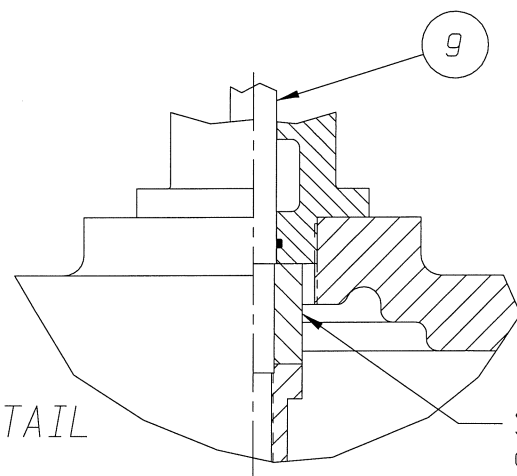
# 130 AIR MOTOR														
VALVE SIZE	'A'	'B'	'C'	'D' DIA	'E' DIA	'F' DIA	'G'	'H'	"J"	"K"	"L"	"M"	"N"	QTY. BONNET CAP SCREWS STUDS/NUTS
02.50	16.52 [419.6]	10.94 [277.9]	8.94 [227.1]	7.00 [177.8]	0.75 [19.0]	5.50 [139.7]	30.14 [765.5]	24.56 [623.8]	20.19 [512.8]	33.81 [858.8]	19.00 [482.6]	0.12 [3.0]	0.22 [5.6]	4
03.00	17.14 [435.3]	11.56 [293.6]	10.38 [263.7]	7.50 [190.5]	0.75 [19.0]	6.00 [152.4]	30.76 [781.3]	25.18 [639.6]	20.81 [528.6]	34.43 [874.5]		0.12 [3.0]	0.22 [5.6]	4
04.00	18.50 [469.9]	12.92 [328.2]	12.88 [327.2]	9.00 [228.6]	0.75 [19.0]	7.50 [190.5]	32.12 [815.8]	26.54 [674.1]	22.17 [563.1]	35.79 [909.1]		0.12 [3.0]	0.25 [6.4]	8
06.00	21.23 [539.2]	15.65 [397.5]	16.38 [416.0]	11.00 [279.4]	0.88 [22.3]	9.50 [241.3]	34.85 [885.2]	29.27 [743.4]	24.90 [632.5]	38.52 [978.4]		0.12 [3.0]	0.23 [5.8]	10
08.00	25.35 [643.9]	19.77 [502.2]	20.88 [530.4]	13.53 [343.6]	0.88 [22.4]	11.75 [298.4]	38.97 [989.8]	33.39 [848.1]	29.02 [737.1]	42.64 [1083.1]		0.12 [3.0]	0.28 [7.1]	14

# 250 AIR MOTOR														
VALVE SIZE	'A'	'B'	'C'	'D' DIA	'E' DIA	'F' DIA	'G'	'H'	"J"	"K"	"L"	"M"	"N"	QTY. BONNET CAP SCREWS STUDS/NUTS
04.00	22.50 [571.5]	14.92 [379.0]	12.88 [327.2]	9.00 [228.6]	0.75 [19.0]	7.50 [190.5]	36.12 [917.4]	28.54 [724.9]	26.73 [678.9]	40.35 [1024.9]	23.88 [606.5]	0.12 [3.0]	0.25 [6.4]	8
06.00	25.23 [640.8]	17.65 [448.3]	16.38 [416.0]	11.00 [279.4]	0.88 [22.3]	9.50 [241.3]	38.85 [986.8]	31.27 [794.2]	29.46 [748.3]	43.08 [1094.2]		0.12 [3.0]	0.23 [5.8]	10
08.00	29.35 [745.5]	21.77 [552.9]	20.88 [530.4]	13.53 [343.6]	0.88 [22.4]	11.75 [298.4]	42.97 [1091.4]	35.39 [898.9]	33.58 [852.9]	47.20 [1198.9]		0.12 [3.0]	0.28 [7.1]	14



TFE DIAPHRAGM

BONNET SPACER DETAIL  
WEIR 08.00



SPACER  
(PART OF ITEM #9)

LIST OF PARTS			
ITEM	DESCRIPTION	MATERIAL	QTY.
1	BODY, FLANGED PLASTIC LINED	-	1
* 2	DIAPHRAGM, ELASTOMER	-	1
3	BONNET, ADAPTER	-	1
4	HEX, CAP SCREWS OR STUDS	-	SEE CHARTS
5	NUTS	-	SEE CHARTS
6	COMPRESSOR, F/ ELASTOMER DIAPHRAGM	C.I. A-126, CL. B	1
7	PIN, SPIROL	STN. STL. TYPE 302	1
8	FITTING, LUBE	-	AR
9	SPINDLE, VALVE	STN. STL. A-582, TYPE 303	1
* 10	O-RING #238	BUNA-N	1
11	NUT, ADAPTER BUSHING	M.I. A-47, GR. 32510	AR
* 12	O-RING #214	BUNA-N	AR
13	COVER, LOWER	ALUMINUM	1
* 14	DIAPHRAGM, AIR MOTOR	BUNA-N	1
15	COVER, UPPER	ALUMINUM	1
16	PLATE, ACTUATOR	D.I. A-536	2
17	NUT, HEAVY HEX.	CAR. STL.	1
18	SCREW, HEX HD. CAP	CAR. STL.	24
19	NUT, HEX	CAR. STL.	24
20	SPINDLE, VALVE YOKE	STN. STL.	1
21	YOKE	D.I. A-395, GR. 60-40-18	1
22	COUPLING, HALF	STN. STL. A-351, GR. CF8	2
23	SCREW, HEX HD. CAP	CAR. STL.	2
24	NUT, HEX	CAR. STL.	2
25	SCALE, INDICATING	STN. STL.	1
26	BUSHING, ADAPTER	D.I. A-395, GR. 60-40-18	AR
27	SPINDLE, ACTUATOR	STN. STL. A-564	1
* 28	DIAPHRAGM, PTFE	R2	1
* 29	CUSHION, BACKING	ELASTOMER	1
30	NUT, TUBE	BRASS B-16, C36000 H02	1
31	COMPRESSOR, F/ PLASTIC DIAPHRAGM	C.I. A-126, CL. B	1
32	PLUG, PIPE	CAR. STL. A-181, GR. 1	2
33	PLATE, IDENTIFICATION	STN. STL. A-240, TYPE 304	1
34	SCREW, DRIVE TYPE U	CAR. STL. SAE GR. 2	4
35	PLUG, VENT	STN. STL. TYPE 416	1
36	SCREW, MACHINE FILLISTER HD.	STN. STL. 18-8	1
37	MAGNET, CRUCIBLE U-181	-	1
38	RING, RETAINING	STEEL	1
* 39	O-RING #115	BUNA-N	1
* 40	SPACER, INDICATOR HOUSING	ALUMINUM B-211	1
* 41	O-RING #110	BUNA-N	2
42	HOUSING, INDICATOR	ALUMINUM B-26	1
43	ROD, INDICATOR	ALUMINUM B-211	1
44	TUBE, INDICATOR	PLASTIC	1
45	SCREW, DRIVE	CAR. STL.	2
46	PLATE, INDICATOR	CAR. STL.	1
Δ 47	WASHER, IMPACT	STEEL, AISI 4140	2
▲ 48	KEY, TUBE NUT	BRASS, B-36 C26000	1

\* RECOMMENDED SPARE PARTS

NOTE:

- Δ 1. USED ONLY WITH #250 AIR MOTOR.
- ▲ 2. ITEM (#48) USED ONLY WITH VALVES 6" AND LARGER.

UNLESS OTHERWISE SPECIFIED, DIMENSIONS NOT SHOWN IN BRACKETS [ ] ARE IN INCHES. DIMENSIONS SHOWN IN BRACKETS [ ] ARE IN MILLIMETERS.

ENGRD VALVES ORDER: -	ITEM: -	THIRD ANGLE PROJECTION	DATE	BY	VALVE ASSEMBLY WEIR 02.50 THRU 08.00 #101 THRU #250 DOUBLE ACT WITH FLANGED ENDS PLASTIC LINED	 <b>ITT</b> Engineered Valves www.engvalves.com
FIGURE NO.: -			01/08/97	JRD		
CUSTOMER: -			01/24/97	JLW		D 000000-000 SHEET 2 OF 2 REV -
CUSTOMER P.O.: -			01/31/97	RRK	MASTER DWG: 004399-2/2/-	
			APVD	01/31/97	RRK	ISSUED BY: -
			ECN# 146		CERT BY: -	