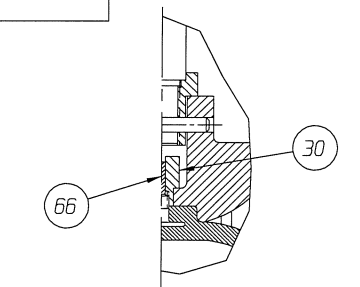


YOKES MOUNTED W/ SPECIAL SPRING COMBINATION

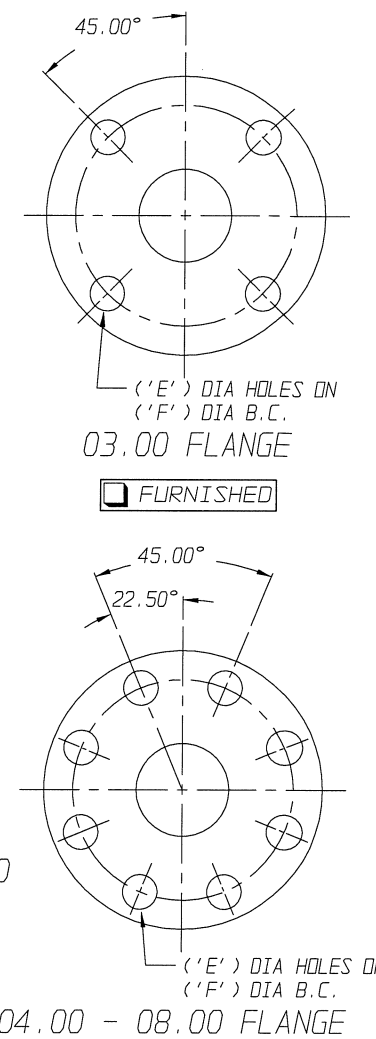
FURNISHED

POSITION INDICATOR IS SHOWN 90° FROM TRUE POSITION



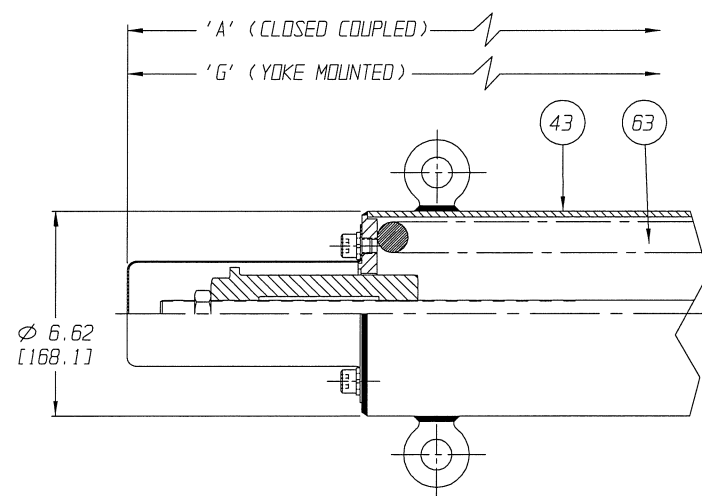
DETAIL WEIR 06.00 THRU 8.00

FURNISHED



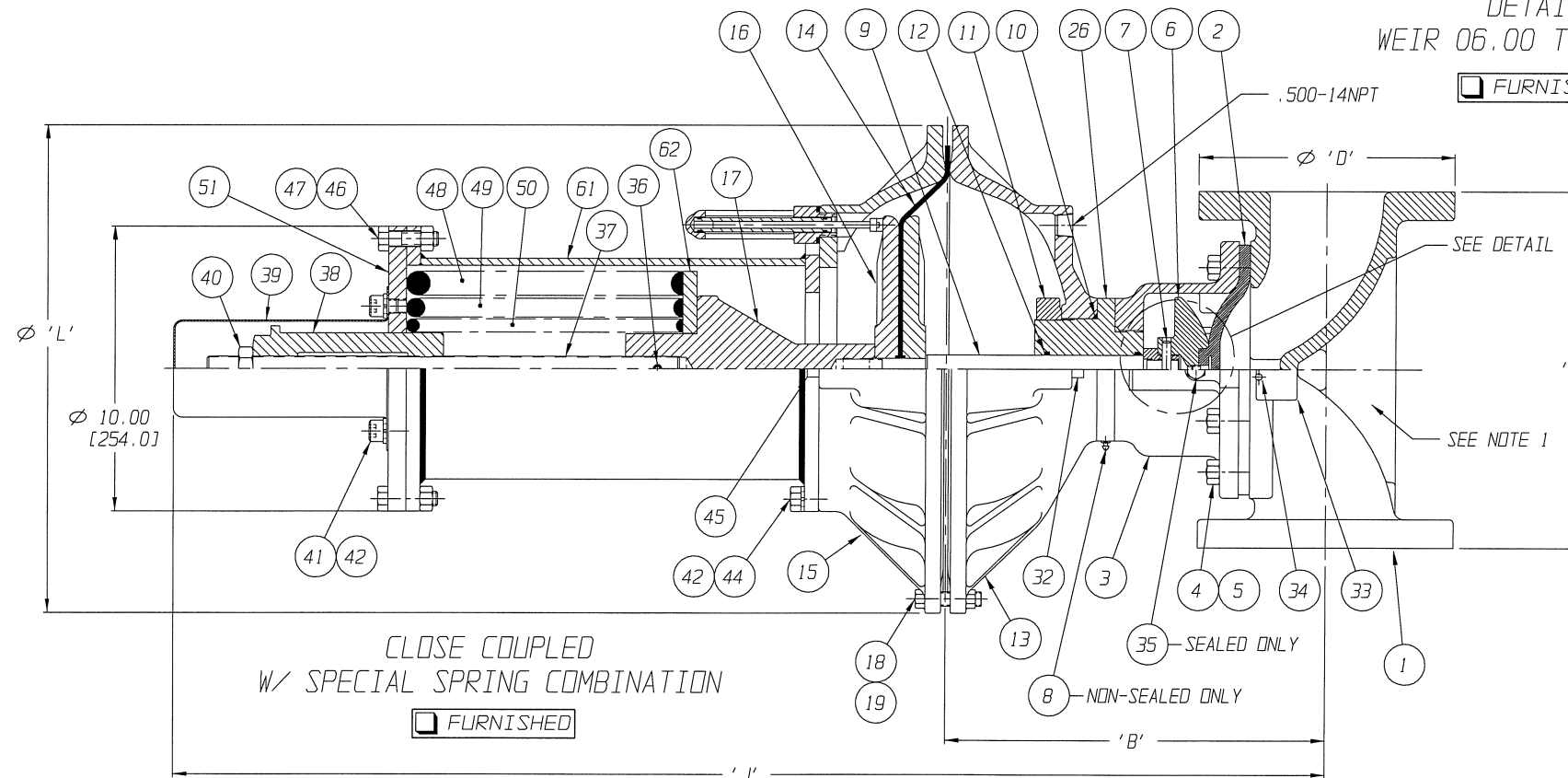
FURNISHED

FURNISHED



#130 SPRING CASE

FURNISHED



CLOSE COUPLED W/ SPECIAL SPRING COMBINATION

FURNISHED

UNLESS OTHERWISE SPECIFIED, DIMENSIONS NOT SHOWN IN BRACKETS [] ARE IN INCHES. DIMENSIONS SHOWN IN BRACKETS [] ARE IN MILLIMETERS.

ENGRD VALVES ORDER: -	ITEM: -	THIRD ANGLE PROJECTION		DATE	BY	VALVE ASSEMBLY
FIGURE NO.: -				DWN	03/01/13	DJS
CUSTOMER: -				CHKD	03/01/13	STO
CUSTOMER P.O.: -		ALL DIMENSIONS SHOWN ON THIS DRAWING ARE FOR REFERENCE ONLY		APVD	03/01/13	STO
						MASTER DWG: 004410-1/2/A
						ECN# 14262
						ISSUED BY: -
						CERT BY: -



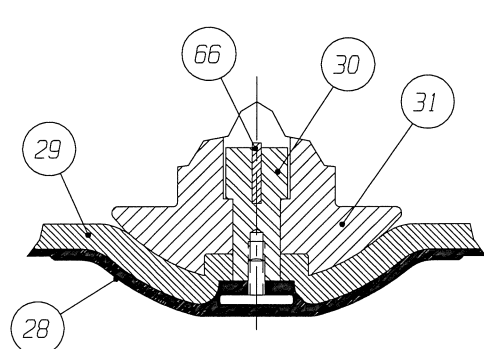
ITT

Engineered Valves
www.engvalves.com

D	000000-000	SHEET	REV
		1 OF 2	-

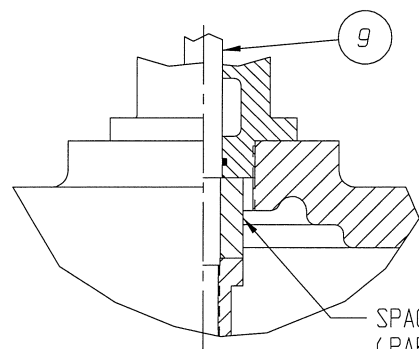
# 101 AIR MOTOR												
VALVE SIZE	'A'	'B'	'C'	'D' DIA	'E' DIA	'F' DIA	'G'	'H'	'J'	'K'	'L'	QTY. BONNET CAP SCREWS STUDS/NUTS
03.00	48.66 [1236.0]	12.03 [305.6]	10.00 [254.0]	7.50 [190.5]	0.75 [19.0]	6.00 [152.4]	62.28 [1581.9]	25.65 [651.5]	39.09 [992.9]	52.71 [1338.8]		4
04.00	50.00 [1270.0]	13.38 [339.9]	12.50 [317.5]	9.00 [228.6]	0.75 [19.0]	7.50 [190.5]	63.62 [1615.9]	27.00 [685.8]	40.43 [1026.9]	54.05 [1372.9]	17.12 [434.8]	8
06.00	52.67 [1337.8]	16.04 [407.4]	16.00 [406.4]	11.00 [279.4]	0.88 [22.3]	9.50 [241.3]	66.29 [1683.8]	29.66 [753.4]	43.29 [1099.6]	56.91 [1445.5]		10
08.00	56.57 [1436.9]	19.94 [506.5]	20.50 [520.7]	13.50 [342.9]	0.88 [22.4]	11.75 [298.4]	70.19 [1782.8]	33.56 [852.4]	47.00 [1193.8]	60.62 [1539.7]		14

# 130 AIR MOTOR												
VALVE SIZE	'A'	'B'	'C'	'D' DIA	'E' DIA	'F' DIA	'G'	'H'	'J'	'K'	'L'	QTY. BONNET CAP SCREWS STUDS/NUTS
03.00	48.66 [1236.0]	11.84 [300.7]	10.00 [254.0]	7.50 [190.5]	0.75 [19.0]	6.00 [152.4]	62.28 [1581.9]	25.46 [646.7]	39.09 [992.9]	52.71 [1338.8]		4
04.00	50.00 [1270.0]	13.19 [335.0]	12.50 [317.5]	9.00 [228.6]	0.75 [19.0]	7.50 [190.5]	63.62 [1615.9]	26.81 [681.0]	40.43 [1026.9]	54.05 [1372.9]	19.00 [482.6]	8
06.00	52.67 [1337.8]	15.86 [402.8]	16.00 [406.4]	11.00 [279.4]	0.88 [22.3]	9.50 [241.3]	66.29 [1683.8]	29.48 [748.8]	43.29 [1099.6]	56.91 [1445.5]		10
08.00	56.57 [1436.9]	19.76 [501.9]	20.50 [520.7]	13.50 [342.9]	0.88 [22.4]	11.75 [298.4]	70.19 [1782.8]	33.38 [847.9]	47.00 [1193.8]	60.62 [1539.7]		14



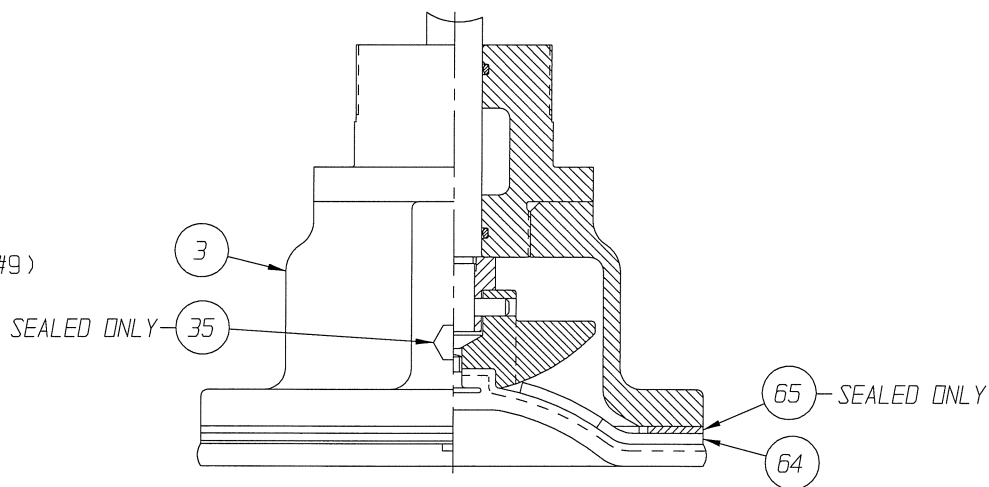
TFE DIAPHRAGM
REFER TO NOTE 2

FURNISHED



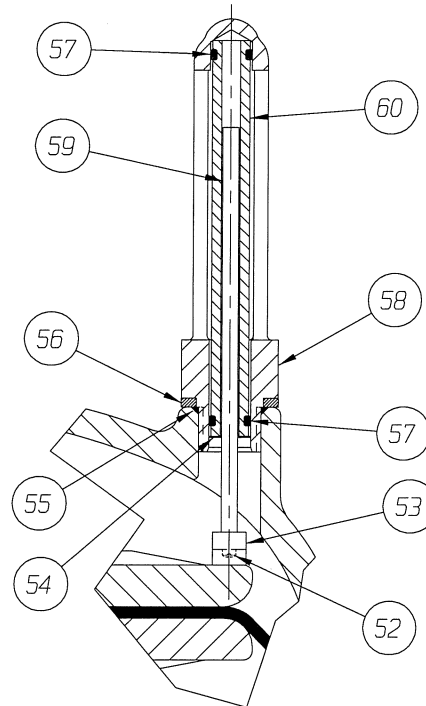
BONNET SPACER DETAIL
WEIR 08.00

FURNISHED



STN STL BONNET DETAIL
WEIR 03.00 & 04.00 E/31

FURNISHED



DETAIL: POSITION INDICATOR
(OPTIONAL)

FURNISHED

LIST OF PARTS			
ITEM	DESCRIPTION	MATERIAL	QTY.
1	BODY, FLANGED	-	1
2	DIAPHRAGM, ELASTOMER	-	1
* 3	BONNET, ADAPTER	-	1
4	HEX, CAP SCREWS OR STUDS	-	SEE CHARTS
5	NUTS	-	SEE CHARTS
6	COMPRESSOR, F/ ELASTOMER DIAPHRAGM	C.I. A-126	1
7	PIN, SPIROLO	STN. STL. TYPE 302	1
8	FITTING, LUBE	-	AR
9	SPINDLE, VALVE	STN. STL. A-564 630 H900	1
* 10	O-RING #238	BUNA-N	1
11	NUT, ADAPTER BUSHING	D.I.	AR
* 12	O-RING #214	BUNA-N	AR
13	COVER, LOWER	ALUMINUM	1
* 14	DIAPHRAGM, AIR MOTOR	BUNA-N	1
15	COVER, UPPER	ALUMINUM	1
16	PLATE, ACTUATOR	D.I. A-536	2
17	CONNECTOR, SPINDLE	D.I. A-395 GR. 60-40-18	1
18	SCREW, HEX HD. CAP	CAR. STL.	24
19	NUT, HEX	CAR. STL.	24
20	SPINDLE, VALVE YOKE	STN. STL.	1
21	YOKE	D.I. A-395, GR. 60-40-18	1
22	COUPLING, PAIR	STN. STL. A-351, GR. CF8	1
23	SCREW, HEX HD. CAP	CAR. STL.	4
24	NUT, HEX	CAR. STL.	4
25	SCALE, INDICATING	STN. STL.	1
26	BUSHING, ADAPTER	-	AR
27	SPINDLE, ACTUATOR	STN. STL. A-564 630	1
* 28	DIAPHRAGM, PTFE	R2	1
* 29	CUSHION, BACKING	ELASTOMER	1
30	NUT, TUBE	BRASS B-16, C36000 H02	1
31	COMPRESSOR, F/ PTFE DIAPHRAGM	C.I. A-126	1
32	PLUG, PIPE	CAR. STL. A-181, GR. 1	1
33	PLATE, IDENTIFICATION	STN. STL. A-240, TYPE 304	1
34	SCREW, DRIVE TYPE U	CAR. STL. SAE GR. 2	4
35	PLUG, VENT	STN. STL. TYPE 416	1
36	PIN, SPIROLO	STN. STL. TYPE 302	1
37	EXTENSION, SPINDLE	CAR. STL. A-108	1
38	BUSHING, ADJUSTING	D.I.	1
39	SHIELD, TRAVEL STOP	CAR. STL.	1
40	NUT, HEX. JAM	CAR. STL.	1
41	SCREW, HEX. SOC. HD. CAP	CAR. STL.	2
42	WASHER, SPRING LOCK	CAR. STL.	10
43	ASSEMBLY, SPRING CASING #130	CAR. STL.	1
44	SCREW, HEX. HD. CAP	CAR. STL.	8
45	PLUG, PIPE	PLASTIC	1
46	SCREW, HEX. HD. CAP	CAR. STL.	8
47	NUT, HEX.	CAR. STL.	8
48	SPRING, #98	CAR. STL. A-689	1
49	SPRING, #96	CAR. STL. A-689	1
50	SPRING, #97	CAR. STL. A-689	1
51	COVER, SPRING CASE	CAR. STL.	1
52	SCREW, MACHINE FILLISTER HD.	STN. STL. 18-8	1
53	MAGNET, U-181	-	1
54	RING, RETAINING	STEEL	1
* 55	O-RING #115	BUNA-N	1
56	SPACER, INDICATOR HOUSING	ALUMINUM B-211	1
* 57	O-RING #110	BUNA-N	2
58	HOUSING, INDICATOR	ALUMINUM B-26	1
59	ROD, INDICATOR	ALUMINUM B-211	1
60	TUBE, INDICATOR	PLASTIC	1
61	SPRING CASE, SPECIAL SPRING COMBO	CAR. STL.	1
62	PLATE, SPRING SUPPORT	CAR. STL. A-36	1
△ 63	SPRING, #130	CAR. STL. A-689	1
64	FINGERPLATE	STN. STL. A-240 TYPE 304	1
65	GASKET	EPDM	1
▲ 66	KEY, TUBE NUT	BRASS, B-36 C26000	1

NOTE:

1. VALVE IS BI-DIRECTIONAL (NO FLOW ARROW).
- ▲ 2. ITEM (#66) USED ONLY WITH VALVES 6.00" AND LARGER.
- △ 3. SPRING #130 CANNOT BE PURCHASED SEPARATELY, AS IT IS INCLUDED IN CASE ASSY ITEM 43.
- * 4. RECOMMENDED SPARE PARTS.

UNLESS OTHERWISE SPECIFIED, DIMENSIONS NOT SHOWN IN BRACKETS [] ARE IN INCHES. DIMENSIONS SHOWN IN BRACKETS [] ARE IN MILLIMETERS.

ENGRD VALVES ORDER: -	ITEM: -	THIRD ANGLE PROJECTION	DATE	BY	VALVE ASSEMBLY WEIR 03.00 THRU 8.00 #101 THRU #130 REVERSE ACT. WITH FLANGED ENDS UNLINED FLAT FACE
FIGURE NO.: -			DWN 03/01/13	DJS	ITT Engineered Valves www.engvalves.com SHEET REV 2 OF 2 -
CUSTOMER: -			CHKD 03/01/13	STD	
CUSTOMER P.O.: -			APVD 03/01/13	STD	
		ALL DIMENSIONS SHOWN ON THIS DRAWING ARE FOR REFERENCE ONLY	APVD 03/01/13	STD	MASTER DWG: 004410-2/2/A ECN# 14262 ISSUED BY: - CERT BY: -