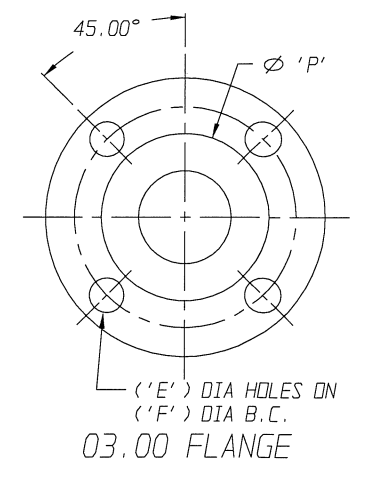


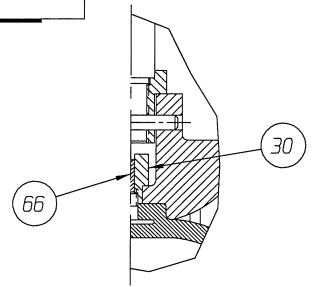
Yoke mounted w/ special spring combination

FURNISHED

POSITION INDICATOR IS SHOWN 90° FROM TRUE POSITION

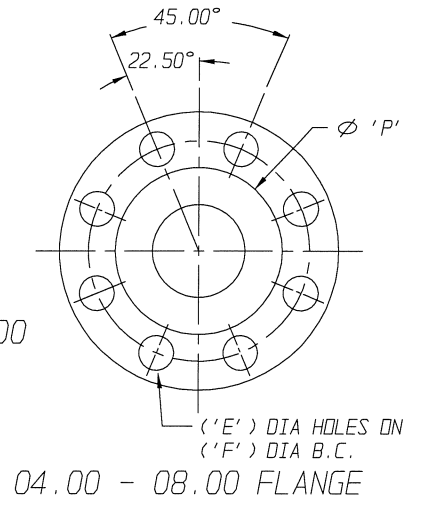


FURNISHED

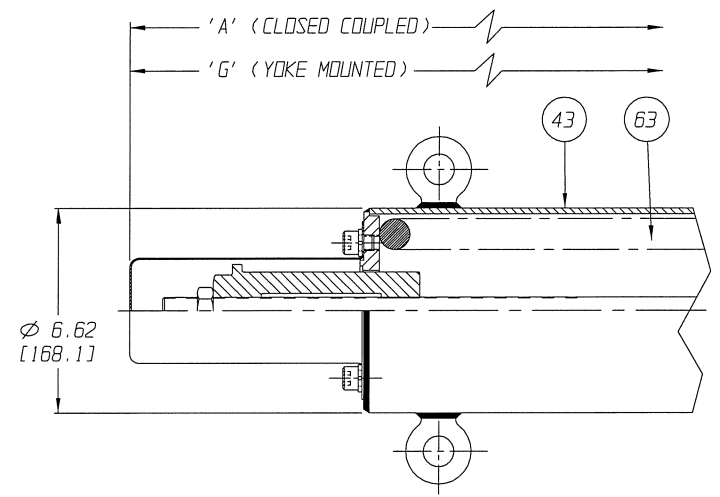


DETAIL WEIR 06.00 THRU 8.00

FURNISHED

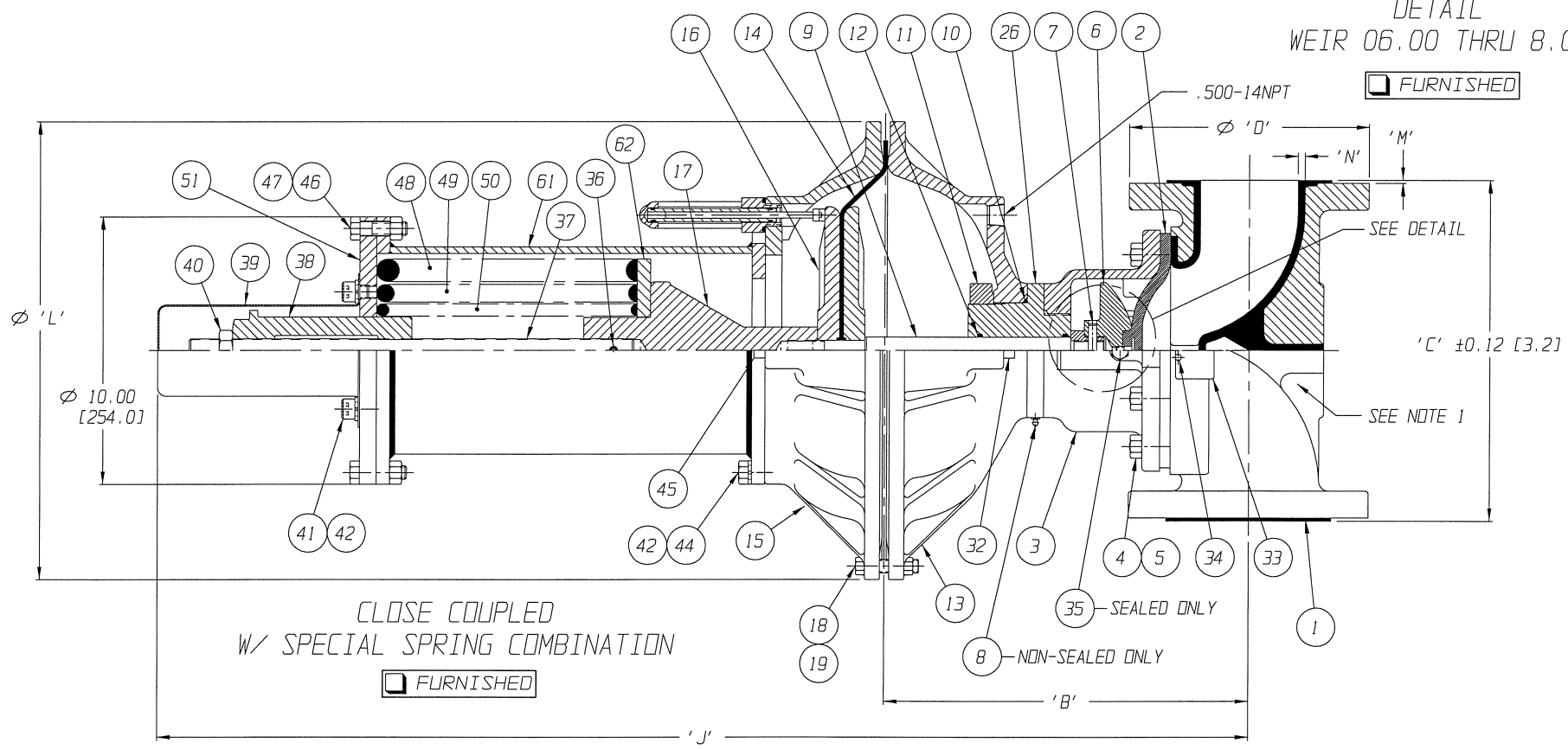


FURNISHED



#130 SPRING CASE

FURNISHED



CLOSE COUPLED w/ special spring combination

FURNISHED

UNLESS OTHERWISE SPECIFIED, DIMENSIONS NOT SHOWN IN BRACKETS [ ] ARE IN INCHES. DIMENSIONS SHOWN IN BRACKETS [ ] ARE IN MILLIMETERS.

ENGRD VALVES ORDER: -	ITEM: -	THIRD ANGLE PROJECTION	DATE	BY	VALVE ASSEMBLY WEIR 03.00 THRU 8.00 #101 THRU #130 REVERSE ACT. WITH FLANGED ENDS PLASTIC LINED	
FIGURE NO.: -			DWN	02/26/13		DJS
CUSTOMER: -			CHKD	02/26/13		STD
CUSTOMER P.O.: -			APVD	02/26/13		STD
			MASTER DWG: 004416-1/2/B		ECN# 14262	
					ISSUED BY: -	CERT BY: -

**ITT** Engineered Valves  
www.engvalves.com

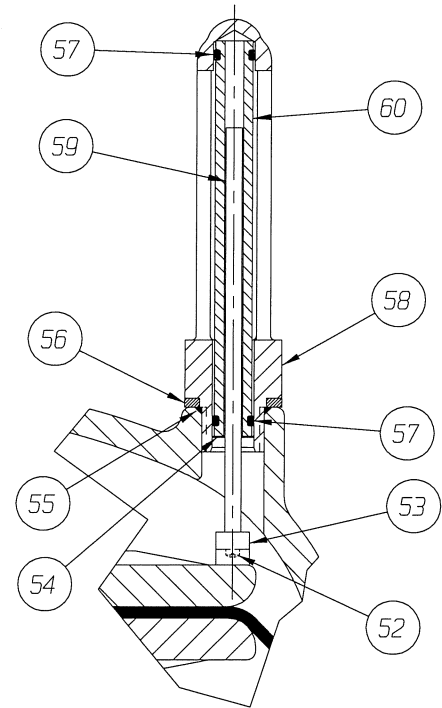
D 000000-000 SHEET 1 OF 2 REV -

# 101 AIR MOTOR

VALVE SIZE	'A'	'B'	'C'	'D' DIA	'E' DIA	'F' DIA	'G'	'H'	'J'	'K'	'L'	'M'	'N'	'P'	QTY. BONNET CAP SCREWS STUDS/NUTS
03.00	48.53 [1232.7]	11.91 [302.5]	10.25 [260.4]	7.50 [190.5]	0.75 [19.0]	6.00 [152.4]	62.15 [1578.6]	25.53 [648.5]	38.96 [989.6]	52.58 [1335.5]	17.12 [434.8]	0.12 [3.0]	0.22 [5.6]	5.00 [127.0]	4
04.00	50.26 [1276.6]	13.63 [346.2]	12.88 [327.2]	9.00 [228.6]	0.75 [19.0]	7.50 [190.5]	63.88 [1622.6]	27.25 [692.2]	40.69 [1033.5]	54.31 [1379.5]		0.12 [3.0]	0.25 [6.4]	6.19 [157.2]	8
06.00	53.43 [1357.1]	16.80 [426.7]	16.38 [416.1]	11.00 [279.4]	0.88 [22.3]	9.50 [241.3]	67.05 [1703.1]	30.42 [772.7]	43.86 [1114.0]	57.48 [1460.0]		0.12 [3.0]	0.23 [5.8]	8.38 [212.8]	10
08.00	57.14 [1451.4]	20.52 [521.2]	20.88 [530.4]	13.50 [342.9]	0.88 [22.4]	11.75 [298.4]	70.76 [1797.3]	34.14 [867.2]	47.57 [1208.3]	61.19 [1554.2]		0.12 [3.0]	0.28 [7.1]	10.62 [269.7]	14

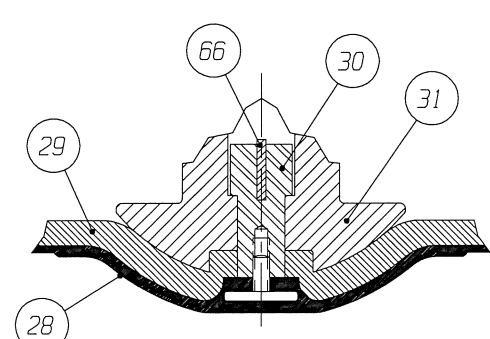
# 130 AIR MOTOR

VALVE SIZE	'A'	'B'	'C'	'D' DIA	'E' DIA	'F' DIA	'G'	'H'	'J'	'K'	'L'	'M'	'N'	'P'	QTY. BONNET CAP SCREWS STUDS/NUTS
03.00	48.53 [1232.7]	11.72 [297.7]	10.25 [260.4]	7.50 [190.5]	0.75 [19.0]	6.00 [152.4]	62.15 [1578.6]	25.34 [643.6]	38.96 [989.6]	52.58 [1335.5]	19.00 [482.6]	0.12 [3.0]	0.22 [5.6]	5.00 [127.0]	4
04.00	50.26 [1276.6]	13.44 [341.4]	12.88 [327.2]	9.00 [228.6]	0.75 [19.0]	7.50 [190.5]	63.88 [1622.6]	27.06 [687.3]	40.69 [1033.5]	54.31 [1379.5]		0.12 [3.0]	0.25 [6.4]	6.19 [157.2]	8
06.00	53.43 [1357.1]	16.61 [421.9]	16.38 [416.1]	11.00 [279.4]	0.88 [22.3]	9.50 [241.3]	67.05 [1703.1]	30.23 [767.8]	43.86 [1114.0]	57.48 [1460.0]		0.12 [3.0]	0.23 [5.8]	8.38 [212.8]	10
08.00	57.14 [1451.4]	20.33 [516.4]	20.88 [530.4]	13.50 [342.9]	0.88 [22.4]	11.75 [298.4]	70.76 [1797.3]	33.95 [862.3]	47.57 [1208.3]	61.19 [1554.2]		0.12 [3.0]	0.28 [7.1]	10.62 [269.7]	14



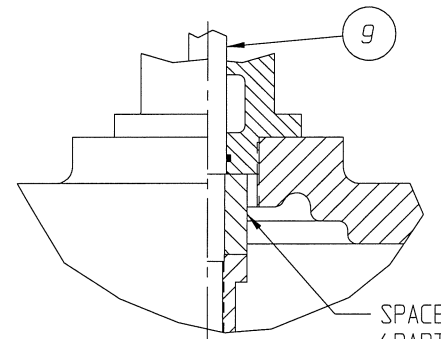
DETAIL: POSITION INDICATOR (OPTIONAL)

FURNISHED



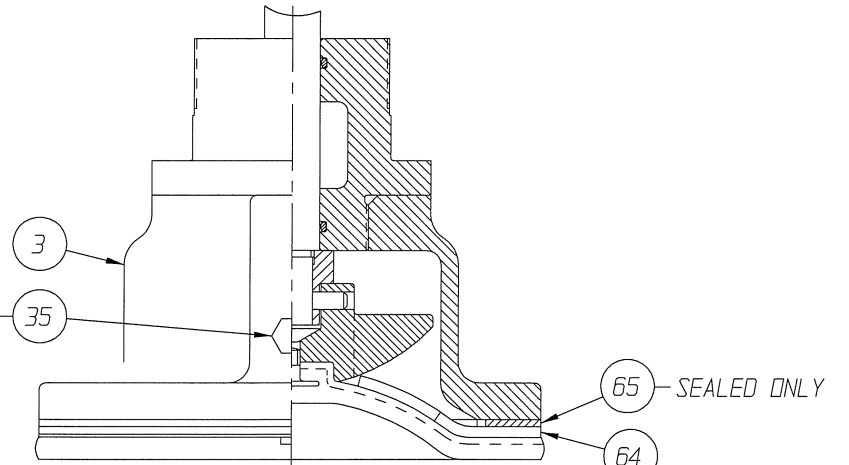
TFE DIAPHRAGM REFER TO NOTE 2

FURNISHED



BONNET SPACER DETAIL WEIR 08.00

FURNISHED



STN STL BONNET DETAIL WEIR 03.00 & 04.00 E/31

FURNISHED

LIST OF PARTS			
ITEM	DESCRIPTION	MATERIAL	QTY.
1	BODY, FLANGED PLASTIC LINED	-	1
2	DIAPHRAGM, ELASTOMER	-	1
3	BONNET, ADAPTER	-	1
4	HEX, CAP SCREWS OR STUDS	-	SEE CHARTS
5	NUTS	-	SEE CHARTS
6	COMPRESSOR, F/ ELASTOMER DIAPHRAGM	C.I. A-126	1
7	PIN, SPIROL	STN. STL. TYPE 302	1
8	FITTING, LUBE	-	AR
9	SPINDLE, VALVE	STN. STL. A-564 630 H900	1
10	O-RING #238	BUNA-N	1
11	NUT, ADAPTER BUSHING	D.I.	AR
12	O-RING #214	BUNA-N	AR
13	COVER, LOWER	ALUMINUM	1
14	DIAPHRAGM, AIR MOTOR	BUNA-N	1
15	COVER, UPPER	ALUMINUM	1
16	PLATE, ACTUATOR	D.I. A-536	2
17	CONNECTOR, SPINDLE	D.I. A-395 GR. 60-40-18	1
18	SCREW, HEX HD. CAP	CAR. STL.	24
19	NUT, HEX	CAR. STL.	24
20	SPINDLE, VALVE YOKE	STN. STL.	1
21	YOKE	D.I. A-395, GR. 60-40-18	1
22	COUPLING, PAIR	STN. STL. A-351, GR. CFB	1
23	SCREW, HEX HD. CAP	CAR. STL.	4
24	NUT, HEX	CAR. STL.	4
25	SCALE, INDICATING	STN. STL.	1
26	BUSHING, ADAPTER	-	AR
27	SPINDLE, ACTUATOR	STN. STL. A-564 630	1
28	DIAPHRAGM, PTFE	R2	1
29	CUSHION, BACKING	ELASTOMER	1
30	NUT, TUBE	BRASS B-16, C36000 H02	1
31	COMPRESSOR, F/ PTFE DIAPHRAGM	C.I. A-126	1
32	PLUG, PIPE	CAR. STL. A-181, GR. 1	1
33	PLATE, IDENTIFICATION	STN. STL. A-240, TYPE 304	1
34	SCREW, DRIVE TYPE U	CAR. STL. SAE GR. 2	4
35	PLUG, VENT	STN. STL. TYPE 416	1
36	PIN, SPIROL	STN. STL. TYPE 302	1
37	EXTENSION, SPINDLE	CAR. STL. A-108	1
38	BUSHING, ADJUSTING	D.I.	1
39	SHIELD, TRAVEL STOP	CAR. STL.	1
40	NUT, HEX. JAM	CAR. STL.	1
41	SCREW, HEX. SOC. HD. CAP	CAR. STL.	2
42	WASHER, SPRING LOCK	CAR. STL.	10
43	ASSEMBLY, SPRING CASING #130	CAR. STL.	1
44	SCREW, HEX. HD. CAP	CAR. STL.	8
45	PLUG, PIPE	PLASTIC	1
46	SCREW, HEX. HD. CAP	CAR. STL.	8
47	NUT, HEX.	CAR. STL.	8
48	SPRING, #98	CAR. STL. A-689	1
49	SPRING, #96	CAR. STL. A-689	1
50	SPRING, #97	CAR. STL. A-689	1
51	COVER, SPRING CASE	CAR. STL.	1
52	SCREW, MACHINE FILLISTER HD.	STN. STL. 18-8	1
53	MAGNET, U-181	-	1
54	RING, RETAINING	STEEL	1
55	O-RING #115	BUNA-N	1
56	SPACER, INDICATOR HOUSING	ALUMINUM B-211	1
57	O-RING #110	BUNA-N	2
58	HOUSING, INDICATOR	ALUMINUM B-26	1
59	ROD, INDICATOR	ALUMINUM B-211	1
60	TUBE, INDICATOR	PLASTIC	1
61	SPRING CASE, SPECIAL SPRING COMBO	CAR. STL.	1
62	PLATE, SPRING SUPPORT	CAR. STL. A-36	1
63	SPRING, #130	CAR. STL. A-689	1
64	FINGERPLATE	STN. STL. A-240 TYPE 304	1
65	GASKET	EPDM	1
66	KEY, TUBE NUT	BRASS, B-36 C26000	1

- NOTE:
1. VALVE IS BI-DIRECTIONAL (NO FLOW ARROW).
  - ▲ 2. ITEM (#66) USED ONLY WITH VALVES 6.00" AND LARGER.
  - △ 3. SPRING #130 CANNOT BE PURCHASED SEPARATELY, AS IT IS INCLUDED IN CASE ASSY ITEM 43.
  - \* 4. RECOMMENDED SPARE PARTS.

UNLESS OTHERWISE SPECIFIED, DIMENSIONS NOT SHOWN IN BRACKETS [ ] ARE IN INCHES. DIMENSIONS SHOWN IN BRACKETS [ ] ARE IN MILLIMETERS.

ENGRD VALVES ORDER: -	ITEM: -	THIRD ANGLE PROJECTION	DATE	BY	VALVE ASSEMBLY WEIR 03.00 THRU 8.00 #101 THRU #130 REVERSE ACT. WITH FLANGED ENDS PLASTIC LINED
FIGURE NO.: -			DWN 02/26/13	DJS	<b>ITT</b> Engineered Valves www.engvalves.com
CUSTOMER: -			CHKD 02/26/13	STD	
CUSTOMER P.O.: -			APVD 02/26/13	STD	
		ALL DIMENSIONS SHOWN ON THIS DRAWING ARE FOR REFERENCE ONLY	MASTER DWG: 004416-2/2/B	ECN# 14262	ISSUED BY: -
				SHEET 2 OF 2	REV -