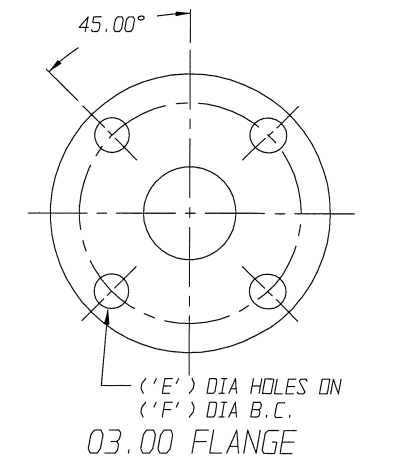


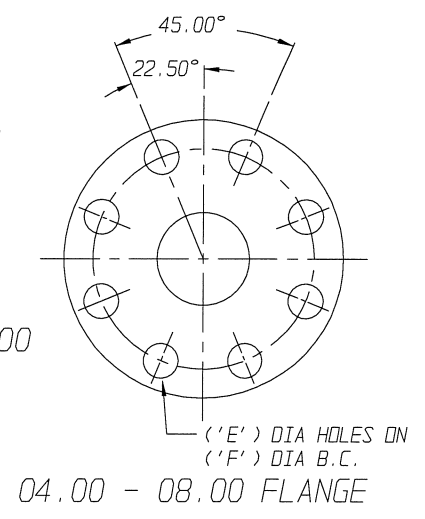
YOE MOUNTED W/ SPECIAL SPRING COMBINATION

FURNISHED

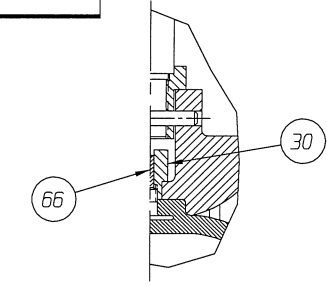
POSITION INDICATOR IS SHOWN 90° FROM TRUE POSITION



FURNISHED

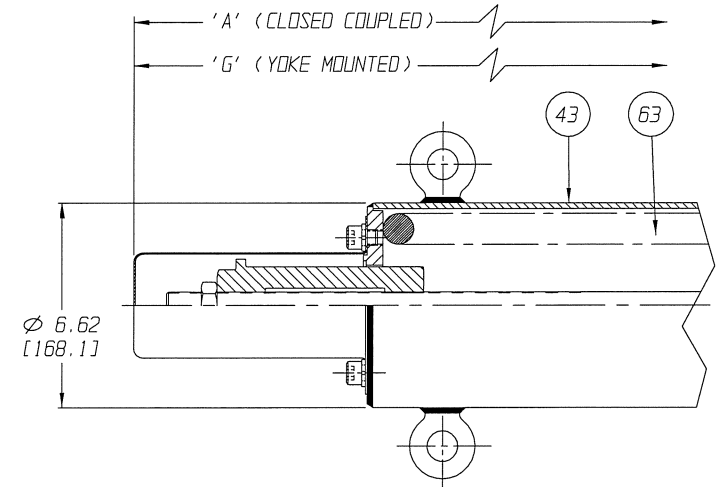


FURNISHED



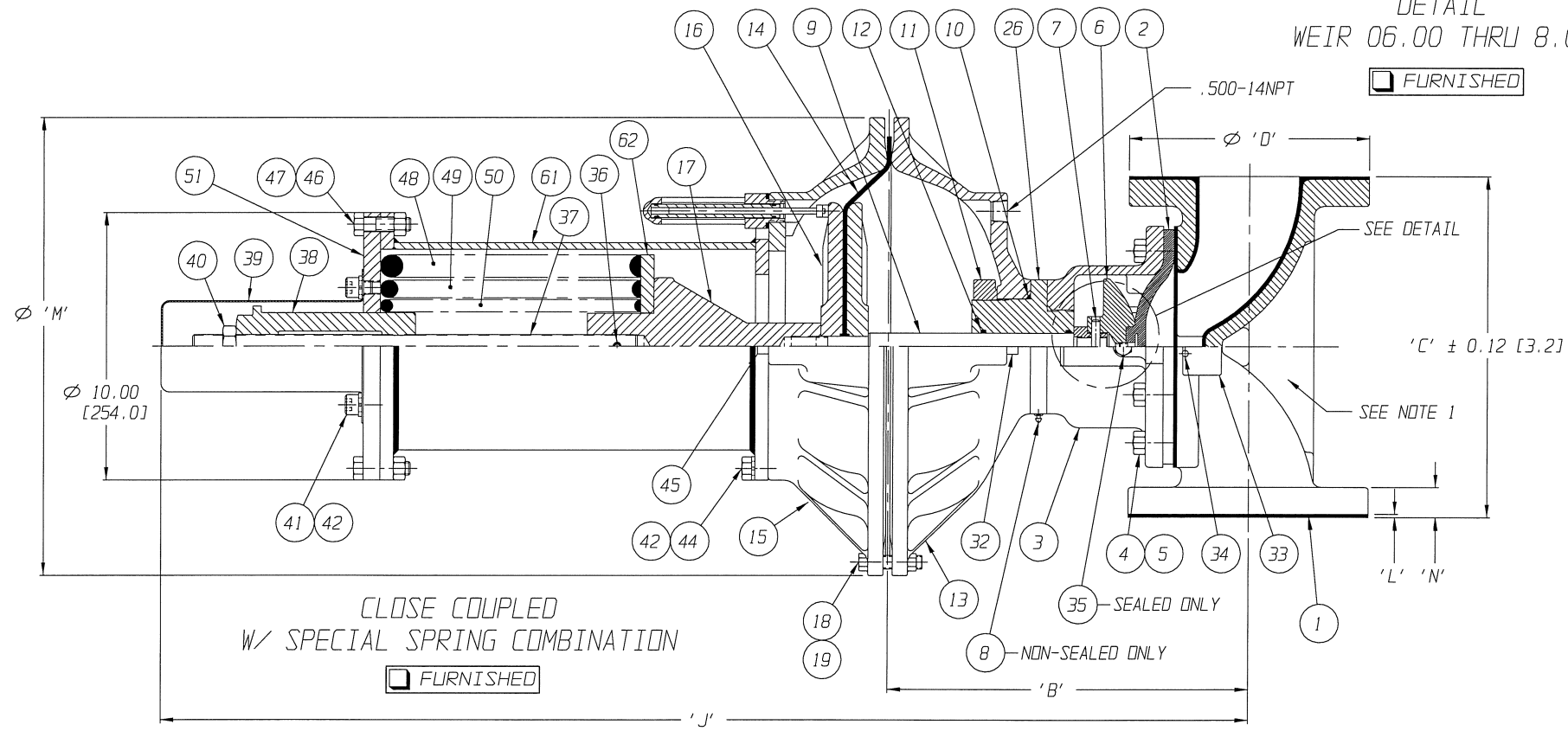
DETAIL WEIR 06.00 THRU 8.00

FURNISHED



#130 SPRING CASE

FURNISHED



CLOSE COUPLED W/ SPECIAL SPRING COMBINATION

FURNISHED

UNLESS OTHERWISE SPECIFIED, DIMENSIONS NOT SHOWN IN BRACKETS [] ARE IN INCHES. DIMENSIONS SHOWN IN BRACKETS [] ARE IN MILLIMETERS.

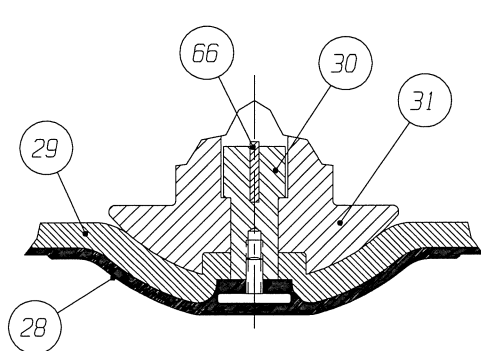
ENGRD VALVES ORDER: -	ITEM: -	THIRD ANGLE PROJECTION	DATE	BY	VALVE ASSEMBLY
FIGURE NO.: -			DWN 02/20/13	DJS	WEIR 03.00 THRU 8.00
CUSTOMER: -			CHKD 02/20/13	STD	#101 THRU #130 REVERSE ACT.
CUSTOMER P.O.: -			APVD 02/20/13	STD	WITH FLANGED ENDS
					RUBBER LINED
					MASTER DWG: 004417-1/2/B
					ECN# 14262
					ISSUED BY: -
					CERT BY: -

ITT Engineered Valves
www.engvalves.com

000000-000 SHEET 1 OF 2 REV -

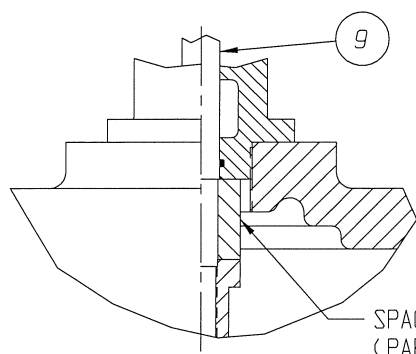
# 101 AIR MOTOR														
VALVE SIZE	'A'	'B'	'C'	'D' DIA	'E' DIA	'F' DIA	'G'	'H'	'J'	'K'	'L'	'M'	'N'	QTY. BONNET CAP SCREWS STUDS/NUTS
03.00	48.78 [1239.0]	12.15 [308.6]	10.25 [260.4]	7.50 [190.5]	0.75 [19.0]	6.00 [152.4]	62.40 [1585.0]	25.77 [654.6]	39.21 [995.9]	52.83 [1341.9]	0.12 [3.0]	17.12 [434.8]	0.92 [23.4]	4
04.00	50.12 [1273.0]	13.50 [342.9]	12.75 [323.9]	9.00 [228.6]	0.75 [19.0]	7.50 [190.5]	63.74 [1619.0]	27.12 [688.8]	40.55 [1030.0]	54.17 [1375.9]	0.12 [3.0]	19.00 [482.6]	1.11 [28.2]	8
06.00	52.86 [1342.6]	16.24 [412.5]	16.38 [416.9]	11.00 [279.4]	0.88 [22.3]	9.50 [241.3]	66.48 [1688.6]	29.86 [758.4]	43.29 [1099.6]	56.91 [1445.5]	0.19 [4.8]	19.00 [482.6]	1.24 [31.5]	10
08.00	56.76 [1441.7]	20.14 [511.6]	20.88 [530.4]	13.50 [342.9]	0.88 [22.3]	11.75 [298.4]	70.38 [1787.7]	33.76 [857.5]	47.19 [1198.6]	60.81 [1544.6]	0.19 [4.8]	19.00 [482.6]	1.36 [34.5]	14

# 130 AIR MOTOR														
VALVE SIZE	'A'	'B'	'C'	'D' DIA	'E' DIA	'F' DIA	'G'	'H'	'J'	'K'	'L'	'M'	'N'	QTY. BONNET CAP SCREWS STUDS/NUTS
03.00	48.78 [1239.0]	11.96 [303.8]	10.25 [260.4]	7.50 [190.5]	0.75 [19.0]	6.00 [152.4]	62.40 [1585.0]	25.58 [649.7]	39.21 [995.9]	52.83 [1341.9]	0.12 [3.0]	17.12 [434.8]	0.92 [23.4]	4
04.00	50.12 [1273.0]	13.31 [338.1]	12.75 [323.9]	9.00 [228.6]	0.75 [19.0]	7.50 [190.5]	63.74 [1619.0]	26.93 [684.0]	40.55 [1030.0]	54.17 [1375.9]	0.12 [3.0]	19.00 [482.6]	1.11 [28.2]	8
06.00	52.86 [1342.6]	16.05 [407.7]	16.38 [416.9]	11.00 [279.4]	0.88 [22.3]	9.50 [241.3]	66.48 [1688.6]	29.67 [753.6]	43.29 [1099.6]	56.91 [1445.5]	0.19 [4.8]	19.00 [482.6]	1.24 [31.5]	10
08.00	56.76 [1441.7]	19.95 [506.7]	20.88 [530.4]	13.50 [342.9]	0.88 [22.3]	11.75 [298.4]	70.38 [1787.7]	33.57 [852.7]	47.19 [1198.6]	60.81 [1544.6]	0.19 [4.8]	19.00 [482.6]	1.36 [34.5]	14



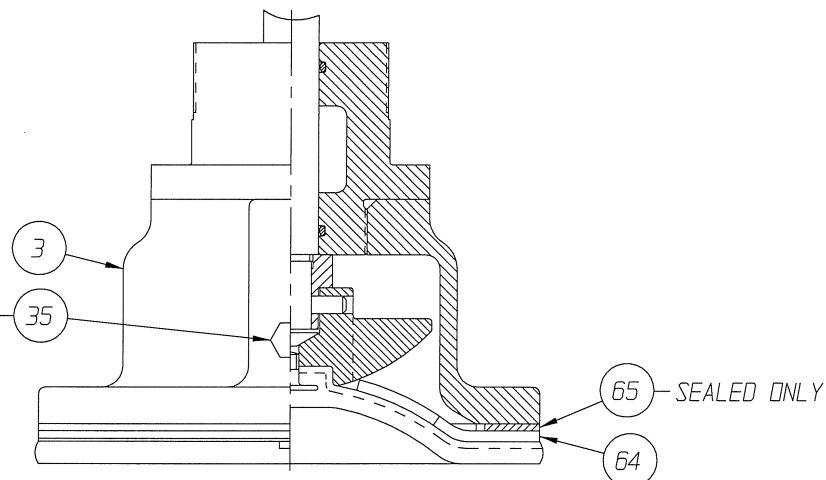
TFE DIAPHRAGM
REFER TO NOTE 2

FURNISHED



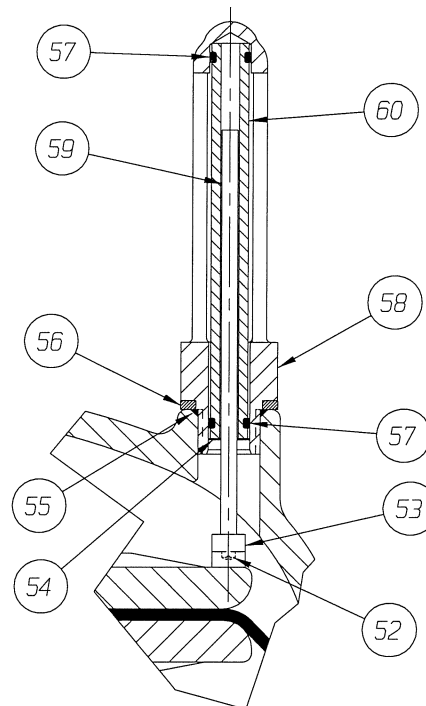
BONNET SPACER DETAIL
WEIR 08.00

FURNISHED



STN STL BONNET DETAIL
WEIR 03.00 & 04.00 E/31

FURNISHED



DETAIL: POSITION INDICATOR
(OPTIONAL)

FURNISHED

LIST OF PARTS			
ITEM	DESCRIPTION	MATERIAL	QTY.
1	BODY, FLANGED RUBBER LINED	-	1
2	DIAPHRAGM, ELASTOMER	-	1
3	BONNET, ADAPTER	-	1
4	HEX, CAP SCREWS OR STUDS	-	SEE CHARTS
5	NUTS	-	SEE CHARTS
6	COMPRESSOR, F/ ELASTOMER DIAPHRAGM	C.I. A-126	1
7	PIN, SPIROLO	STN. STL. TYPE 302	1
8	FITTING, LUBE	-	AR
9	SPINDLE, VALVE	STN. STL. A-564 630 H900	1
* 10	O-RING #238	BUNA-N	1
11	NUT, ADAPTER BUSHING	D.I.	AR
* 12	O-RING #214	BUNA-N	AR
13	COVER, LOWER	ALUMINUM	1
* 14	DIAPHRAGM, AIR MOTOR	BUNA-N	1
15	COVER, UPPER	ALUMINUM	1
16	PLATE, ACTUATOR	D.I. A-536	2
17	CONNECTOR, SPINDLE	D.I. A-395 GR. 60-40-18	1
18	SCREW, HEX HD. CAP	CAR. STL.	24
19	NUT, HEX	CAR. STL.	24
20	SPINDLE, VALVE YOKE	STN. STL.	1
21	YOKE	D.I. A-395, GR. 60-40-18	1
22	COUPLING, PAIR	STN. STL. A-351, GR. CFB	1
23	SCREW, HEX HD. CAP	CAR. STL.	4
24	NUT, HEX	CAR. STL.	4
25	SCALE, INDICATING	STN. STL.	1
26	BUSHING, ADAPTER	-	AR
27	SPINDLE, ACTUATOR	STN. STL. A-564 630	1
* 28	DIAPHRAGM, PTFE	R2	1
* 29	CUSHION, BACKING	ELASTOMER	1
30	NUT, TUBE	BRASS B-16, C36000 H02	1
31	COMPRESSOR, F/ PTFE DIAPHRAGM	C.I. A-126	1
32	PLUG, PIPE	CAR. STL. A-181, GR. 1	1
33	PLATE, IDENTIFICATION	STN. STL. A-240, TYPE 304	1
34	SCREW, DRIVE TYPE U	CAR. STL. SAE GR. 2	4
35	PLUG, VENT	STN. STL. TYPE 416	1
36	PIN, SPIROLO	STN. STL. TYPE 302	1
37	EXTENSION, SPINDLE	CAR. STL. A-108	1
38	BUSHING, ADJUSTING	D.I.	1
39	SHIELD, TRAVEL STOP	CAR. STL.	1
40	NUT, HEX. JAM	CAR. STL.	1
41	SCREW, HEX. SOC. HD. CAP	CAR. STL.	2
42	WASHER, SPRING LOCK	CAR. STL.	10
43	ASSEMBLY, SPRING CASING #130	CAR. STL.	1
44	SCREW, HEX. HD. CAP	CAR. STL.	8
45	PLUG, PIPE	PLASTIC	1
46	SCREW, HEX. HD. CAP	CAR. STL.	8
47	NUT, HEX.	CAR. STL.	8
48	SPRING, #98	CAR. STL. A-689	1
49	SPRING, #96	CAR. STL. A-689	1
50	SPRING, #97	CAR. STL. A-689	1
51	COVER, SPRING CASE	CAR. STL.	1
52	SCREW, MACHINE FILLISTER HD.	STN. STL. 18-8	1
53	MAGNET, U-181	-	1
54	RING, RETAINING	STEEL	1
* 55	O-RING #115	BUNA-N	1
56	SPACER, INDICATOR HOUSING	ALUMINUM B-211	1
* 57	O-RING #110	BUNA-N	2
58	HOUSING, INDICATOR	ALUMINUM B-26	1
59	ROD, INDICATOR	ALUMINUM B-211	1
60	TUBE, INDICATOR	PLASTIC	1
61	SPRING CASE, SPECIAL SPRING COMBO	CAR. STL.	1
62	PLATE, SPRING SUPPORT	CAR. STL. A-36	1
Δ 63	SPRING, #130	CAR. STL. A-689	1
64	FINGERPLATE	STN. STL. A-240 TYPE 304	1
65	GASKET	EPDM	1
▲ 66	KEY, TUBE NUT	BRASS, B-36 C26000	1

NOTE:

1. VALVE IS BI-DIRECTIONAL (NO FLOW ARROW).
- ▲ 2. ITEM (#66) USED ONLY WITH VALVES 6.00" AND LARGER.
- Δ 3. SPRING #130 CANNOT BE PURCHASED SEPARATELY, AS IT IS INCLUDED IN CASE ASSY ITEM 43.
- * 4. RECOMMENDED SPARE PARTS.

UNLESS OTHERWISE SPECIFIED, DIMENSIONS NOT SHOWN IN BRACKETS [] ARE IN INCHES. DIMENSIONS SHOWN IN BRACKETS [] ARE IN MILLIMETERS.

ENGRD VALVES ORDER: -	ITEM: -	THIRD ANGLE PROJECTION	DATE	BY	VALVE ASSEMBLY WEIR 03.00 THRU 8.00 #101 THRU #130 REVERSE ACT. WITH FLANGED ENDS RUBBER LINED
FIGURE NO.: -			DWN 02/20/13	DJS	 ITT Engineered Valves www.engvalves.com 000000-000 SHEET 2 OF 2 REV -
CUSTOMER: -		ALL DIMENSIONS SHOWN ON THIS DRAWING ARE FOR REFERENCE ONLY	CHKD 02/20/13	STD	
CUSTOMER P.O.: -			APVD 02/20/13	STD	
			MASTER DWG: 004417-2/2/B	ECN# 14262	ISSUED BY: -
			CERT BY: -		