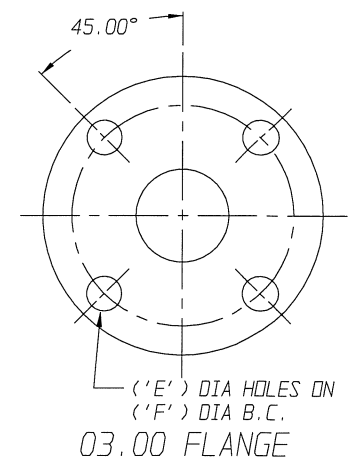


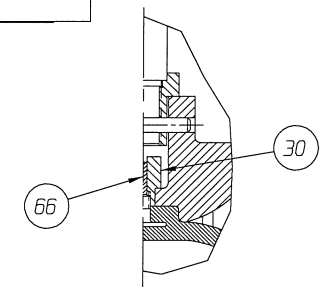
Yoke MOUNTED W/ SPECIAL SPRING COMBINATION

FURNISHED

POSITION INDICATOR IS SHOWN 90° FROM TRUE POSITION

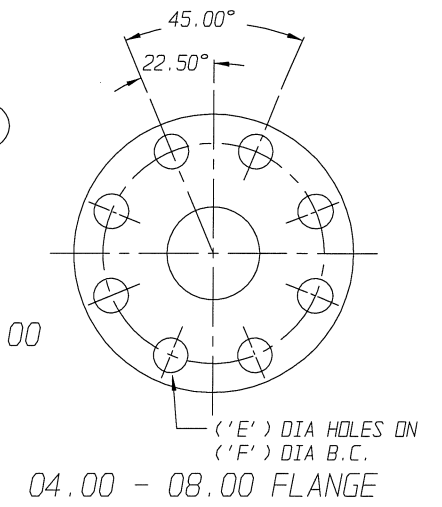


FURNISHED

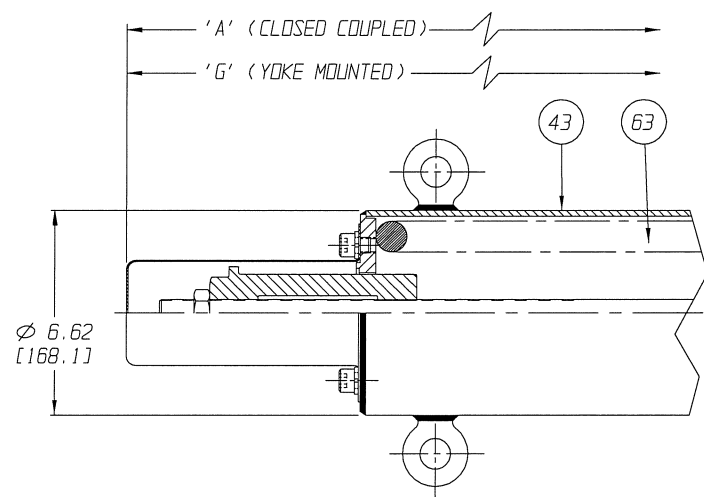


DETAIL WEIR 06.00 THRU 8.00

FURNISHED

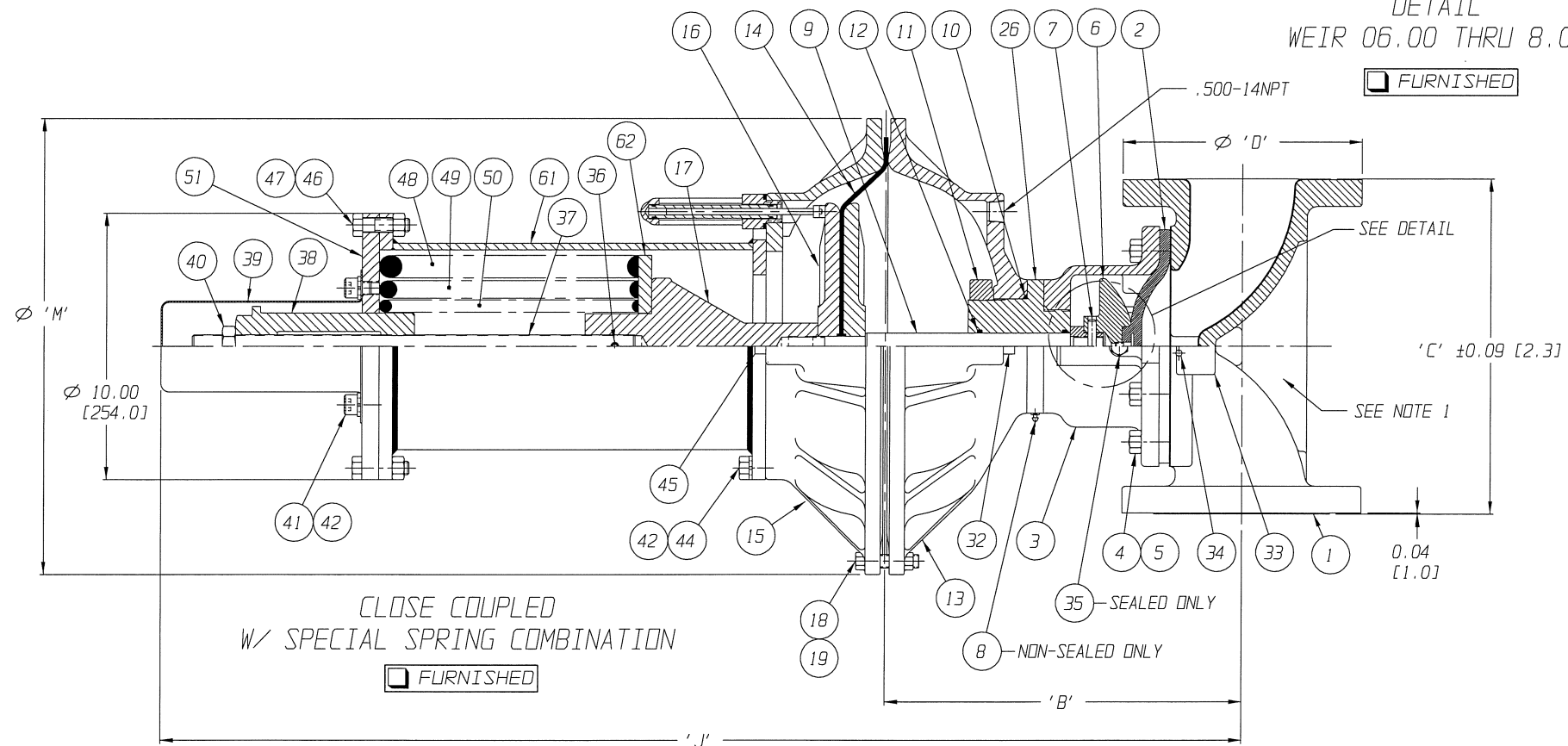


FURNISHED



#130 SPRING CASE

FURNISHED



CLOSE COUPLED W/ SPECIAL SPRING COMBINATION

FURNISHED

UNLESS OTHERWISE SPECIFIED, DIMENSIONS NOT SHOWN IN BRACKETS [] ARE IN INCHES. DIMENSIONS SHOWN IN BRACKETS [] ARE IN MILLIMETERS.

| | | | | | |
|-----------------------|---------|------------------------|---------------|-----|-----------------------------|
| ENGRD VALVES ORDER: - | ITEM: - | THIRD ANGLE PROJECTION | DATE | BY | VALVE ASSEMBLY |
| FIGURE NO.: - | | | DWN 03/06/13 | DJS | WEIR 03.00 THRU 8.00 |
| CUSTOMER: - | | | CHKD 03/06/13 | STD | #101 THRU #130 REVERSE ACT. |
| CUSTOMER P.O.: - | | | APVD 03/06/13 | STD | WITH FLANGED ENDS |
| | | | | | GLASS LINED |
| | | | | | MASTER DWG: 004418-1/2/B |
| | | | | | ECN# 14262 |

ITT

Engineered Valves
www.engvalves.com

000000-000

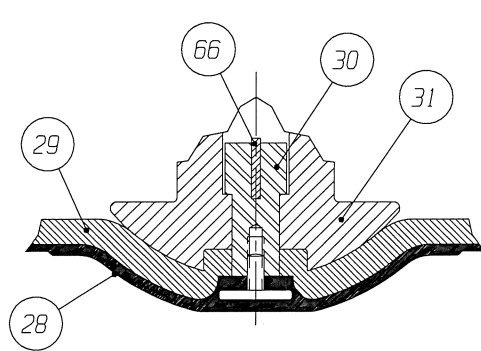
SHEET 1 OF 2

ISSUED BY: -

CERT BY: -

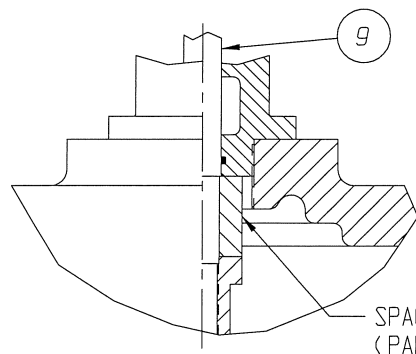
| # 101 AIR MOTOR | | | | | | | | | | | | |
|-----------------|-------------------|------------------|------------------|------------------|----------------|------------------|-------------------|------------------|-------------------|-------------------|------------------|-----------------------------------|
| VALVE SIZE | 'A' | 'B' | 'C' | 'D' DIA | 'E' DIA | 'F' DIA | 'G' | 'H' | 'J' | 'K' | 'L' | QTY. BONNET CAP SCREWS STUDS/NUTS |
| 03.00 | 48.70 [1237.0] | 12.07 [306.6] | 10.06 [255.5] | 7.50 [190.5] | 0.75 [19.0] | 6.00 [152.4] | 62.32 [1582.9] | 25.69 [652.5] | 39.13 [993.9] | 52.75 [1339.9] | | 4 |
| 04.00 | 50.04 [1271.0] | 13.42 [340.9] | 12.56 [319.0] | 9.00 [228.6] | 0.75 [19.0] | 7.50 [190.5] | 63.66 [1617.0] | 27.04 [686.8] | 40.47 [1027.9] | 54.09 [1373.9] | 17.12 [434.8] | 8 |
| 06.00 | 52.71 [1338.8] | 16.09 [408.7] | 16.06 [407.9] | 11.00 [279.4] | 0.88 [22.3] | 9.50 [241.3] | 66.33 [1684.8] | 29.71 [754.6] | 43.14 [1095.8] | 56.76 [1441.7] | | 10 |
| 08.00 | 56.61 [1437.9] | 19.99 [507.7] | 20.56 [522.2] | 13.50 [342.9] | 0.88 [22.3] | 11.75 [298.4] | 70.23 [1783.8] | 33.61 [853.7] | 47.04 [1194.8] | 60.66 [1540.8] | | 14 |

| # 130 AIR MOTOR | | | | | | | | | | | | |
|-----------------|-------------------|------------------|------------------|------------------|----------------|------------------|-------------------|------------------|-------------------|-------------------|------------------|-----------------------------------|
| VALVE SIZE | 'A' | 'B' | 'C' | 'D' DIA | 'E' DIA | 'F' DIA | 'G' | 'H' | 'J' | 'K' | 'L' | QTY. BONNET CAP SCREWS STUDS/NUTS |
| 03.00 | 48.70 [1237.0] | 11.88 [301.8] | 10.06 [255.5] | 7.50 [190.5] | 0.75 [19.0] | 6.00 [152.4] | 62.32 [1582.9] | 25.50 [647.7] | 39.13 [993.9] | 52.75 [1339.9] | | 4 |
| 04.00 | 50.04 [1271.0] | 13.23 [336.0] | 12.56 [319.0] | 9.00 [228.6] | 0.75 [19.0] | 7.50 [190.5] | 63.66 [1617.0] | 26.85 [682.0] | 40.47 [1027.9] | 54.09 [1373.9] | 19.00 [482.6] | 8 |
| 06.00 | 52.71 [1338.8] | 15.90 [403.9] | 16.06 [407.9] | 11.00 [279.4] | 0.88 [22.3] | 9.50 [241.3] | 66.33 [1684.8] | 29.52 [749.8] | 43.14 [1095.8] | 56.76 [1441.7] | | 10 |
| 08.00 | 56.61 [1437.9] | 19.80 [502.9] | 20.56 [522.2] | 13.50 [342.9] | 0.88 [22.3] | 11.75 [298.4] | 70.23 [1783.8] | 33.42 [848.9] | 47.04 [1194.8] | 60.66 [1540.8] | | 14 |



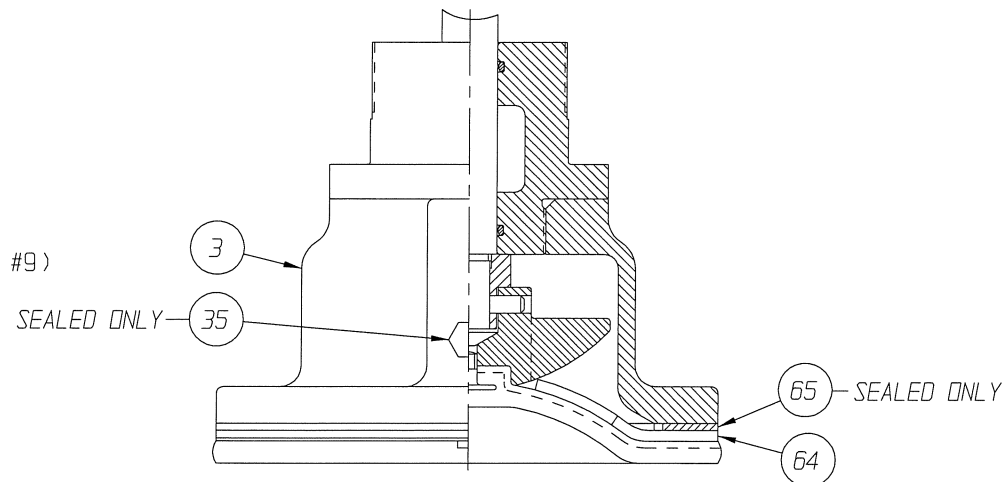
TFE DIAPHRAGM
REFER TO NOTE 2

FURNISHED



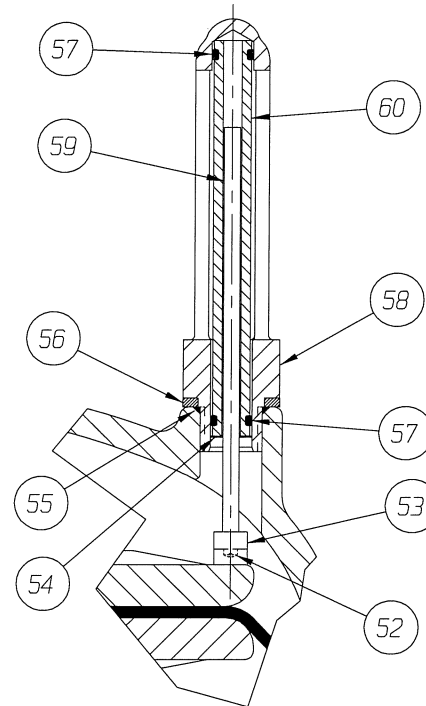
BONNET SPACER DETAIL
WEIR 08.00

FURNISHED



STN STL BONNET DETAIL
WEIR 03.00 & 04.00 E/31

FURNISHED



DETAIL: POSITION INDICATOR
(OPTIONAL)

FURNISHED

| LIST OF PARTS | | | |
|---------------|------------------------------------|---------------------------|------------|
| ITEM | DESCRIPTION | MATERIAL | QTY. |
| 1 | BODY, FLANGED GLASS LINED | - | 1 |
| 2 | DIAPHRAGM, ELASTOMER | - | 1 |
| 3 | BONNET, ADAPTER | - | 1 |
| 4 | HEX, CAP SCREWS OR STUDS | - | SEE CHARTS |
| 5 | NUTS | - | SEE CHARTS |
| 6 | COMPRESSOR, F/ ELASTOMER DIAPHRAGM | C.I. A-126 | 1 |
| 7 | PIN, SPIROL | STN. STL. TYPE 302 | 1 |
| 8 | FITTING, LUBE | - | AR |
| 9 | SPINDLE, VALVE | STN. STL. A-564 630 H900 | 1 |
| * 10 | O-RING #238 | BUNA-N | 1 |
| 11 | NUT, ADAPTER BUSHING | D.I. | AR |
| * 12 | O-RING #214 | BUNA-N | AR |
| 13 | COVER, LOWER | ALUMINUM | 1 |
| * 14 | DIAPHRAGM, AIR MOTOR | BUNA-N | 1 |
| 15 | COVER, UPPER | ALUMINUM | 1 |
| 16 | PLATE, ACTUATOR | D.I. A-536 | 2 |
| 17 | CONNECTOR, SPINDLE | D.I. A-395 GR. 60-40-18 | 1 |
| 18 | SCREW, HEX HD. CAP | CAR. STL. | 24 |
| 19 | NUT, HEX | CAR. STL. | 24 |
| 20 | SPINDLE, VALVE YOKE | STN. STL. | 1 |
| 21 | YOKE | D.I. A-395, GR. 60-40-18 | 1 |
| 22 | COUPLING, PAIR | STN. STL. A-351, GR. CFB | 1 |
| 23 | SCREW, HEX HD. CAP | CAR. STL. | 4 |
| 24 | NUT, HEX | CAR. STL. | 4 |
| 25 | SCALE, INDICATING | STN. STL. | 1 |
| 26 | BUSHING, ADAPTER | - | AR |
| 27 | SPINDLE, ACTUATOR | STN. STL. A-564 630 | 1 |
| * 28 | DIAPHRAGM, PTFE | R2 | 1 |
| * 29 | CUSHION, BACKING | ELASTOMER | 1 |
| 30 | NUT, TUBE | BRASS B-16, C36000 H02 | 1 |
| 31 | COMPRESSOR, F/ PTFE DIAPHRAGM | C.I. A-126 | 1 |
| 32 | PLUG, PIPE | CAR. STL. A-181, GR. 1 | 1 |
| 33 | PLATE, IDENTIFICATION | STN. STL. A-240, TYPE 304 | 1 |
| 34 | SCREW, DRIVE TYPE U | CAR. STL. SAE GR. 2 | 4 |
| 35 | PLUG, VENT | STN. STL. TYPE 416 | 1 |
| 36 | PIN, SPIROL | STN. STL. TYPE 302 | 1 |
| 37 | EXTENSION, SPINDLE | CAR. STL. A-108 | 1 |
| 38 | BUSHING, ADJUSTING | D.I. | 1 |
| 39 | SHIELD, TRAVEL STOP | CAR. STL. | 1 |
| 40 | NUT, HEX. JAM | CAR. STL. | 1 |
| 41 | SCREW, HEX. SOC. HD. CAP | CAR. STL. | 2 |
| 42 | WASHER, SPRING LOCK | CAR. STL. | 10 |
| 43 | ASSEMBLY, SPRING CASING #130 | CAR. STL. | 1 |
| 44 | SCREW, HEX. HD. CAP | CAR. STL. | 8 |
| 45 | PLUG, PIPE | PLASTIC | 1 |
| 46 | SCREW, HEX. HD. CAP | CAR. STL. | 8 |
| 47 | NUT, HEX. | CAR. STL. | 8 |
| 48 | SPRING, #98 | CAR. STL. A-689 | 1 |
| 49 | SPRING, #96 | CAR. STL. A-689 | 1 |
| 50 | SPRING, #97 | CAR. STL. A-689 | 1 |
| 51 | COVER, SPRING CASE | CAR. STL. | 1 |
| 52 | SCREW, MACHINE FILLISTER HD. | STN. STL. 18-8 | 1 |
| 53 | MAGNET, U-181 | - | 1 |
| 54 | RING, RETAINING | STEEL | 1 |
| * 55 | O-RING #115 | BUNA-N | 1 |
| 56 | SPACER, INDICATOR HOUSING | ALUMINUM B-211 | 1 |
| * 57 | O-RING #110 | BUNA-N | 2 |
| 58 | HOUSING, INDICATOR | ALUMINUM B-26 | 1 |
| 59 | ROD, INDICATOR | ALUMINUM B-211 | 1 |
| 60 | TUBE, INDICATOR | PLASTIC | 1 |
| 61 | SPRING CASE, SPECIAL SPRING COMBO | CAR. STL. | 2 |
| 62 | PLATE, SPRING SUPPORT | CAR. STL. A-36 | 1 |
| △ 63 | SPRING, #130 | CAR. STL. A-689 | 1 |
| 64 | FINGERPLATE | STN. STL. A-240 TYPE 304 | 1 |
| 65 | GASKET | EPDM | 1 |
| ▲ 66 | KEY, TUBE NUT | BRASS, B-36 C26000 | 1 |

NOTE:

1. VALVE IS BI-DIRECTIONAL (NO FLOW ARROW).
- ▲ 2. ITEM (#66) USED ONLY WITH VALVES 6.00" AND LARGER.
- △ 3. SPRING #130 CANNOT BE PURCHASED SEPARATELY, AS IT IS INCLUDED IN CASE ASSY ITEM 43.
- * 4. RECOMMENDED SPARE PARTS.

UNLESS OTHERWISE SPECIFIED, DIMENSIONS NOT SHOWN IN BRACKETS [] ARE IN INCHES. DIMENSIONS SHOWN IN BRACKETS [] ARE IN MILLIMETERS.

| | | | | | |
|-----------------------|---------|---|---------------|------------|---|
| ENGRD VALVES ORDER: - | ITEM: - | THIRD ANGLE PROJECTION | DATE | BY | VALVE ASSEMBLY WEIR 03.00 THRU 8.00 #101 THRU #130 REVERSE ACT. WITH FLANGED ENDS GLASS LINED |
| FIGURE NO.: - | | | DWN 03/06/13 | DJS | ITT Engineered Valves www.engvalves.com |
| CUSTOMER: - | | | CHKD 03/06/13 | STD | |
| CUSTOMER P.O.: - | | | APVD 03/06/13 | STD | |
| | | ALL DIMENSIONS SHOWN ON THIS DRAWING ARE FOR REFERENCE ONLY | APVD 03/06/13 | STD | MASTER DWG: 004418-2/2/B |
| | | | ISSUED BY: - | CERT BY: - | SHEET 2 OF 2 REV - 000000-000 |