

ECN# 146

ITT ENGRD VLVS ORDER: _____
 CUSTOMER: _____
 CUSTOMER P.O.: _____
 ISSUED BY: _____ CERTIFIED BY: _____

DATE	BY
DWN 1/21/97	JKD
CHKD 1/22/97	JW
APVD 2/4/97	DKU

VALVE ASSEMBLY
 WEIR 02.50 THRU 12.00
 #101 THRU #250 DIRECT ACT.
 WITH FLANGED ENDS

ITT Engineered Valves
 ITT Fluid Technology Corporation
 Lancaster, Pa

CS D 004428 REV
 SHEET 1 OF 2

# 101 AIR MOTOR										
VALVE SIZE	'A'	'B'	'C'	'D' DIA	'E' DIA	'F' DIA	'G'	'H'	'J'	QTY. BONNET CAP SCREWS STUDS/NUTS
02.50	34.90 (886.5)	11.12 (282.4)	8.50 (215.9)	7.00 (177.8)	0.75 (19.0)	5.50 (139.7)	48.52 (1232.4)	24.75 (628.6)		4
03.00	35.50 (901.7)	11.73 (297.9)	10.00 (254.0)	7.50 (190.5)	0.75 (19.0)	6.00 (152.4)	49.12 (1247.6)	25.35 (643.9)		4
04.00	36.87 (936.5)	13.09 (332.5)	12.50 (317.5)	9.00 (228.6)	0.75 (19.0)	7.50 (190.5)	50.50 (1282.7)	26.71 (678.4)	17.12 (434.8)	8
06.00	39.60 (1005.8)	15.82 (401.8)	16.00 (406.4)	11.00 (279.4)	0.88 (22.3)	9.50 (241.3)	53.22 (1351.8)	29.44 (747.8)		10
08.00	43.72 (1110.5)	19.94 (506.5)	20.50 (520.7)	13.50 (342.9)	0.88 (22.3)	11.75 (298.4)	57.34 (1456.4)	33.56 (852.4)		14

# 130 AIR MOTOR										
VALVE SIZE	'A'	'B'	'C'	'D' DIA	'E' DIA	'F' DIA	'G'	'H'	'J'	QTY. BONNET CAP SCREWS STUDS/NUTS
02.50	34.91 (886.7)	10.94 (277.9)	8.50 (215.9)	7.00 (177.8)	0.75 (19.0)	5.50 (139.7)	48.53 (1232.7)	24.56 (623.8)		4
03.00	35.53 (902.5)	11.56 (293.6)	10.00 (254.0)	7.50 (190.5)	0.75 (19.0)	6.00 (152.4)	49.14 (1248.2)	25.18 (639.6)		4
04.00	36.89 (937.0)	12.92 (328.2)	12.50 (317.5)	9.00 (228.6)	0.75 (19.0)	7.50 (190.5)	50.50 (1282.7)	26.54 (674.1)	19.00 (482.6)	8
06.00	39.62 (1006.3)	15.65 (397.5)	16.00 (406.4)	11.00 (279.4)	0.88 (22.3)	9.50 (241.3)	53.25 (1352.6)	29.27 (743.4)		10
08.00	43.75 (1111.2)	19.77 (502.2)	20.50 (520.7)	13.50 (342.9)	0.88 (22.3)	11.75 (298.4)	57.37 (1457.2)	33.39 (848.1)		14

# 250 AIR MOTOR										
VALVE SIZE	'A'	'B'	'C'	'D' DIA	'E' DIA	'F' DIA	'G'	'H'	'J'	QTY. BONNET CAP SCREWS STUDS/NUTS
04.00	40.89 (1038.6)	14.92 (379.0)	12.50 (317.5)	9.00 (228.6)	0.75 (19.0)	7.50 (190.5)	54.50 (1384.3)	28.54 (724.9)		8
06.00	43.62 (1107.9)	17.65 (448.3)	16.00 (406.4)	11.00 (279.4)	0.88 (22.3)	9.50 (241.3)	57.25 (1454.2)	31.27 (794.2)		10
08.00	47.75 (1212.8)	21.77 (552.9)	20.50 (520.7)	13.50 (342.9)	0.88 (22.3)	11.75 (298.4)	61.37 (1558.8)	35.39 (898.9)	23.88 (606.5)	14
10.00	50.45 (1281.4)	24.48 (621.8)	25.00 (635.0)	16.00 (406.4)	1.00 (25.4)	14.25 (361.9)	64.07 (1627.4)	38.10 (967.7)		14
12.00	52.77 (1340.4)	26.80 (680.7)	29.50 (749.3)	19.00 (482.6)	1.00 (25.4)	17.00 (431.8)	66.38 (1686.1)	40.42 (1026.7)		14

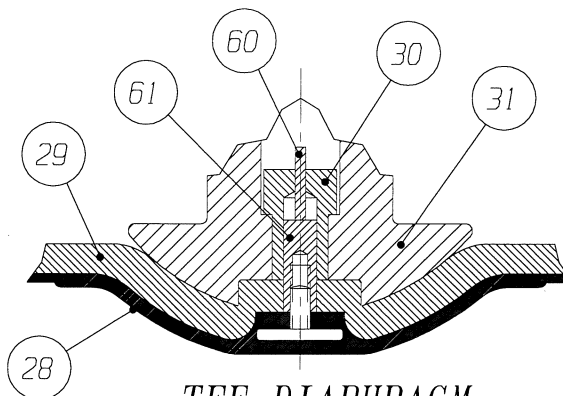
DIMENSIONS SHOWN IN () PARENTHESES ARE MILLIMETERS.

NOTE:

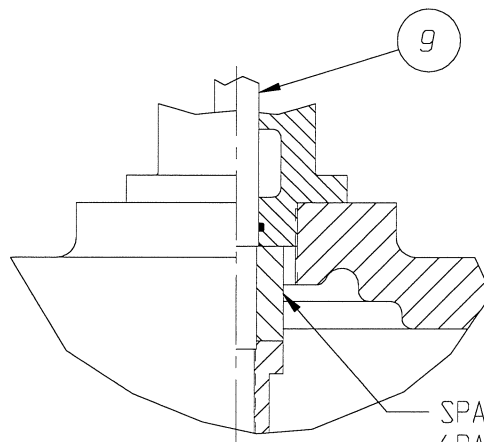
- △ 1. USED ONLY WITH #250 AIR MOTOR.
- ▲ 2. ITEM (#60) USED ONLY WITH VALVES 6" AND LARGER.
- 3. ITEM (#61) USED ONLY WITH A 10" VALVE.

ECN# 146

ITT ENGRD VLVS ORDER: _____
 CUSTOMER: _____
 CUSTOMER P.O.: _____
 ISSUED BY: _____ CERTIFIED BY: _____



TFE DIAPHRAGM
 REFER TO NOTES 2 & 3
 WEIR 02.50 THRU 10.00



BONNET SPACER DETAIL
 WEIR 08.00 THRU 12.00

* RECOMMENDED SPARE PARTS

ITEM _____ SHEET _____ OF _____

LIST OF PARTS			
ITEM	DESCRIPTION	MATERIAL	QTY.
1	BODY, FLANGED	-	1
* 2	DIAPHRAGM, ELASTOMER	-	1
3	BONNET, ADAPTER	-	1
4	HEX, CAP SCREWS OR STUDS	-	SEE CHARTS
5	NUTS	-	SEE CHARTS
6	COMPRESSOR, F/ ELASTOMER DIAPHRAGM	C. I. A-126, CL. B	1
7	PIN, SPIROL	STN. STL. TYPE 302	1
8	FITTING, LUBE	-	AR
9	SPINDLE, VALVE	STN. STL. A-582, TYPE 303	1
* 10	O-RING #238	BUNA-N	1
11	NUT, ADAPTER BUSHING	M. I. A-47, GR. 32510	AR
* 12	O-RING #214	BUNA-N	AR
13	COVER, LOWER	ALUMINUM B-85 52T SCB4A	1
* 14	DIAPHRAGM, AIR MOTOR	BUNA-N	1
15	COVER, UPPER	ALUMINUM B-85 52T SCB4A	1
16	PLATE, ACTUATOR	D. I. A-536	2
17	GASKET	SILICONE	1
18	SCREW, HEX HD. CAP	CAR. STL.	24
19	NUT, HEX	CAR. STL.	24
20	SPINDLE, VALVE YOKE	STN. STL.	1
21	YOKE	D. I. A-395, GR. 60-40-18	1
22	COUPLING, HALF	STN. STL. A-351, GR. CF8	2
23	SCREW, HEX HD. CAP	CAR. STL.	2
24	NUT, HEX	CAR. STL.	2
25	SCALE, INDICATING	STN. STL.	1
26	BUSHING, ADAPTER	D. I. A-395, GR. 60-40-18	AR
27	SPINDLE, ACTUATOR	STN. STL. A-564	1
* 28	DIAPHRAGM, PTFE	R2	1
* 29	CUSHION, BACKING	ELASTOMER	1
30	NUT, TUBE	BRASS B-16, C36000 H02	1
31	COMPRESSOR, F/ PLASTIC DIAPHRAGM	C. I. A-126, CL. B	1
32	PLUG, PIPE	CAR. STL. A-181, GR. 1	1
33	PLATE, IDENTIFICATION	STN. STL. A-240, TYPE 304	1
34	SCREW, DRIVE TYPE U	CAR. STL. SAE GR. 2	4
35	PLUG, VENT	STN. STL. TYPE 416	1
36	SPRING #96	CAR. STL. A-689	1
37	SPINDLE EXTENSION ASSEMBLY	-	1
38	BUSHING, ADJUSTING	M. I., A-47 GR. 32510	1
39	PLATE, SPRING	CAR. STL. A-689	1
40	NUT, HEX JAM	CAR. STL.	1
41	SCREW, HEX HD. CAP	CAR. STL.	8
42	WASHER, SPRINGLOCK	CAR. STL.	8
43	ASSEMBLY SPRING CASING	CAR. STL.	1
44	SCREW, HEX HD CAP	CAR. STL.	8
45	NUT, HEX	CAR. STL.	8
46	PLUG, PIPE	PLASTIC	1
△ 47	WASHER, IMPACT	STEEL, AISI 4140	2
48	CAP	D. I., A395 GR. 60-40-18	1
49	SCREW, MACHINE FILLISTER HD.	STN. STL. 18-8	1
50	MAGNET, CRUCIBLE U-101	-	1
51	RING, RETAINING	STEEL	1
* 52	O-RING #115	BUNA-N	1
53	SPACER, INDICATOR HOUSING	ALUMINUM B-211	1
* 54	O-RING #110	BUNA-N	2
55	HOUSING, INDICATOR	ALUMINUM B-26	1
56	ROD, INDICATOR	ALUMINUM B-211	1
57	TUBE, INDICATOR	PLASTIC	1
58	SCREW, DRIVE	CAR. STL.	2
59	PLATE, INDICATOR	CAR. STL.	1
▲ 60	KEY, TUBE NUT	BRASS, B-36 C26000	1
61	EXTENSION, STUD	STN. STL. A-582, TYPE 303	1

DATE	BY
1/21/97	JKD
1/22/97	JKD
2/4/97	JKD

VALVE ASSEMBLY
 WEIR 02.50 THRU 12.00
 #101 THRU #250 DIRECT ACT.
 WITH FLANGED ENDS

ITT Engineered Valves
 ITT Fluid Technology Corporation
 Lancaster, Pa

CS D 004428 REV
 SHEET 2 OF 2