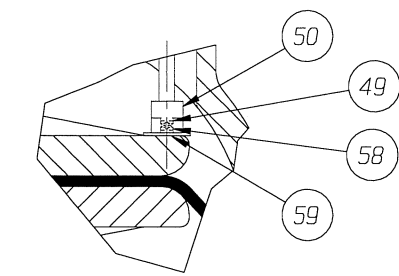


DETAIL: POSITION INDICATOR (OPTIONAL)



DETAIL: POSITION INDICATOR #250 AIR MOTOR ONLY

ECN# 146

ITT ENGRD VLVS ORDER: -
 CUSTOMER: -
 CUSTOMER P.O.: -
 ISSUED BY: _____ CERTIFIED BY: _____

DATE	BY
DWN 1/21/97	JKD
CHKD 1/22/97	[Signature]
APVD 2/4/97	[Signature]

VALVE ASSEMBLY
 WEIR 02.50 THRU 08.00
 #101 THRU #250 DIRECT ACT.
 WITH FLANGED ENDS
 PLASTIC LINED

ITT Engineered Valves
 ITT Fluid Technology Corporation
 Lancaster, Pa

CS	D	004434	REV
		SHEET 1 OF 2	-

101 AIR MOTOR

VALVE SIZE	'A'	'B'	'C'	'D' DIA	'E' DIA	'F' DIA	'G'	'H'	'J'	'K'	'L'	QTY. BONNET CAP SCREWS STUDS/NUTS
02.50	34.90 (886.5)	11.12 (282.4)	8.94 (227.1)	7.00 (177.8)	0.75 (19.0)	5.50 (139.7)	48.52 (1232.4)	24.75 (628.6)	0.22 (5.6)	0.12 (3.0)		4
03.00	35.50 (901.7)	11.73 (297.9)	10.38 (263.7)	7.50 (190.5)	0.75 (19.0)	6.00 (152.4)	49.12 (1247.6)	25.35 (643.9)	0.22 (5.6)	0.12 (3.0)		4
04.00	36.87 (936.5)	13.09 (332.5)	12.88 (327.2)	9.00 (228.6)	0.75 (19.0)	7.50 (190.5)	50.50 (1282.7)	26.71 (678.4)	0.25 (6.4)	0.12 (3.0)	17.12 (434.8)	8
06.00	39.60 (1005.8)	15.82 (401.8)	16.38 (415.9)	11.00 (279.4)	0.88 (22.3)	9.50 (241.3)	53.22 (1351.8)	29.44 (747.8)	0.23 (5.8)	0.12 (3.0)		10
08.00	43.72 (1110.5)	19.94 (506.5)	20.88 (530.4)	13.53 (343.6)	0.88 (22.3)	11.75 (298.4)	57.34 (1456.4)	33.56 (852.4)	0.28 (7.1)	0.12 (3.0)		14

130 AIR MOTOR

VALVE SIZE	'A'	'B'	'C'	'D' DIA	'E' DIA	'F' DIA	'G'	'H'	'J'	'K'	'L'	QTY. BONNET CAP SCREWS STUDS/NUTS
02.50	34.91 (886.7)	10.94 (277.9)	8.94 (227.1)	7.00 (177.8)	0.75 (19.0)	5.50 (139.7)	48.53 (1232.7)	24.56 (623.8)	0.22 (5.6)	0.12 (3.0)		4
03.00	35.53 (902.5)	11.56 (293.6)	10.38 (263.7)	7.50 (190.5)	0.75 (19.0)	6.00 (152.4)	49.14 (1248.2)	25.18 (639.6)	0.22 (5.6)	0.12 (3.0)		4
04.00	36.89 (937.0)	12.92 (328.2)	12.88 (327.2)	9.00 (228.6)	0.75 (19.0)	7.50 (190.5)	50.50 (1282.7)	26.54 (674.1)	0.25 (6.4)	0.12 (3.0)	19.00 (482.6)	8
06.00	39.62 (1006.3)	15.65 (397.5)	16.38 (415.9)	11.00 (279.4)	0.88 (22.3)	9.50 (241.3)	53.25 (1352.6)	29.27 (743.4)	0.23 (5.8)	0.12 (3.0)		10
08.00	43.75 (1111.2)	19.77 (502.2)	20.88 (530.4)	13.53 (343.6)	0.88 (22.3)	11.75 (298.4)	57.37 (1457.2)	33.39 (848.1)	0.28 (7.1)	0.12 (3.0)		14

250 AIR MOTOR

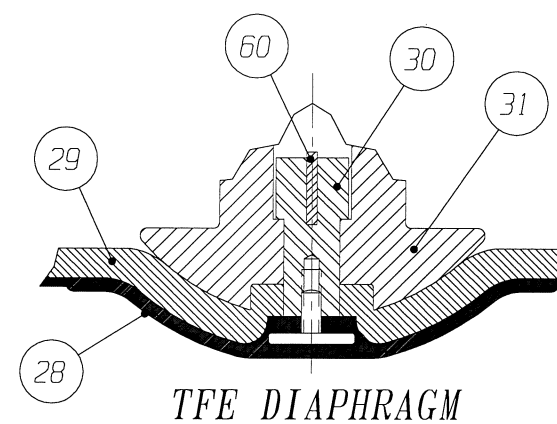
VALVE SIZE	'A'	'B'	'C'	'D' DIA	'E' DIA	'F' DIA	'G'	'H'	'J'	'K'	'L'	QTY. BONNET CAP SCREWS STUDS/NUTS
04.00	40.89 (1038.6)	14.92 (379.0)	12.88 (327.2)	9.00 (228.6)	0.75 (19.0)	7.50 (190.5)	54.50 (1384.3)	28.54 (724.9)	0.25 (6.4)	0.12 (3.0)		8
06.00	43.62 (1107.9)	17.65 (448.3)	16.38 (415.9)	11.00 (279.4)	0.88 (22.3)	9.50 (241.3)	57.75 (1454.2)	31.27 (794.2)	0.23 (5.8)	0.12 (3.0)	23.88 (606.5)	10
08.00	47.75 (1212.8)	21.77 (552.9)	20.88 (530.4)	13.50 (342.9)	0.88 (22.3)	11.75 (298.4)	61.37 (1558.8)	35.39 (898.9)	0.28 (7.1)	0.12 (3.0)		14

DIMENSIONS SHOWN IN () PARENTHESES ARE MILLIMETERS.

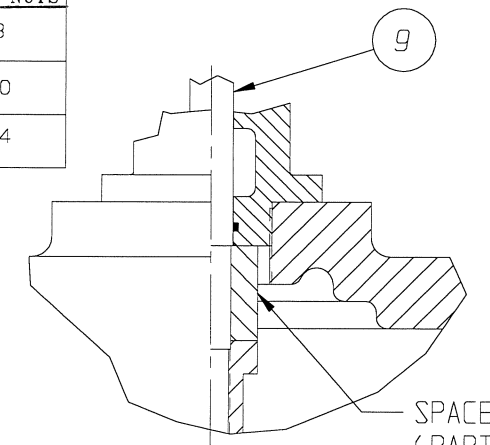
NOTE:

- △ 1. USED ONLY WITH #250 AIR MOTOR.
- ▲ 2. ITEM (#60) USED ONLY WITH VALVES 6" AND LARGER.

* RECOMMENDED SPARE PARTS



TFE DIAPHRAGM



BONNET SPACER DETAIL
WEIR 08.00

ITEM _____ SHEET _____ OF _____

LIST OF PARTS			
ITEM	DESCRIPTION	MATERIAL	QTY.
1	BODY, FLANGED PLASTIC LINED	-	1
* 2	DIAPHRAGM, ELASTOMER	-	1
3	BONNET, ADAPTER	-	1
4	HEX, CAP SCREWS OR STUDS	-	SEE CHARTS
5	NUTS	-	SEE CHARTS
6	COMPRESSOR, F/ ELASTOMER DIAPHRAGM	C.I. A-126, CL. B	1
7	PIN, SPIROL	STN. STL. TYPE 302	1
8	FITTING, LUBE	-	AR
9	SPINDLE, VALVE	STN. STL. A-582, TYPE 303	1
* 10	O-RING #238	BUNA-N	1
11	NUT, ADAPTER BUSHING	M.I. A-47, GR. 32510	AR
* 12	O-RING #214	BUNA-N	AR
* 13	COVER, LOWER	ALUMINUM B-85 52T SC84A	1
* 14	DIAPHRAGM, AIR MOTOR	BUNA-N	1
15	COVER, UPPER	ALUMINUM B-85 52T SC84A	1
16	PLATE, ACTUATOR	D.I. A-536	2
17	GASKET	SILICONE	1
18	SCREW, HEX HD. CAP	CAR. STL.	24
19	NUT, HEX	CAR. STL.	24
20	SPINDLE, VALVE YOKE	STN. STL.	1
21	YOKE	D.I. A-395, GR. 60-40-18	1
22	COUPLING, HALF	STN. STL. A-351, GR. CF8	2
23	SCREW, HEX HD. CAP	CAR. STL.	2
24	NUT, HEX	CAR. STL.	2
25	SCALE, INDICATING	STN. STL.	1
26	BUSHING, ADAPTER	D.I. A-395, GR. 60-40-18	AR
27	SPINDLE, ACTUATOR	STN. STL. A-564	1
* 28	DIAPHRAGM, PTFE	R2	1
* 29	CUSHION, BACKING	ELASTOMER	1
30	NUT, TUBE	BRASS B-16, C36000 H02	1
31	COMPRESSOR, F/ PLASTIC DIAPHRAGM	C.I. A-126, CL. B	1
32	PLUG, PIPE	CAR. STL. A-181, GR. 1	1
33	PLATE, IDENTIFICATION	STN. STL. A-240, TYPE 304	1
34	SCREW, DRIVE TYPE U	CAR. STL. SAE GR. 2	4
35	PLUG, VENT	STN. STL. TYPE 416	1
36	SPRING #96	CAR. STL. A-689	1
37	SPINDLE EXTENSION ASSEMBLY	-	1
38	BUSHING, ADJUSTING	M.I., A-47 GR. 32510	1
39	PLATE, SPRING	CAR. STL. A-689	1
40	NUT, HEX JAM	CAR. STL.	1
41	SCREW, HEX HD. CAP	CAR. STL.	8
42	WASHER, SPRINGLOCK	CAR. STL.	8
43	ASSEMBLY SPRING CASING	CAR. STL.	1
44	SCREW, HEX HD CAP	CAR. STL.	8
45	NUT, HEX	CAR. STL.	8
46	PLUG, PIPE	PLASTIC	1
△ 47	WASHER, IMPACT	STEEL, AISI 4140	2
48	CAP	D.I., A395 GR. 60-40-18	1
49	SCREW, MACHINE FILLISTER HD.	STN. STL. 18-8	1
50	MAGNET, CRUCIBLE U-101	-	1
51	RING, RETAINING	STEEL	1
* 52	O-RING #115	BUNA-N	1
53	SPACER, INDICATOR HOUSING	ALUMINUM B-211	1
* 54	O-RING #110	BUNA-N	2
55	HOUSING, INDICATOR	ALUMINUM B-26	1
56	ROD, INDICATOR	ALUMINUM B-211	1
57	TUBE, INDICATOR	PLASTIC	1
58	SCREW, DRIVE	CAR. STL.	2
59	PLATE, INDICATOR	CAR. STL.	1
▲ 60	KEY, TUBE NUT	BRASS, B-36 C26000	1

ECN# 146

ITT ENGRD VLVS ORDER: -
 CUSTOMER: -
 CUSTOMER P.O.: -
 ISSUED BY: _____ CERTIFIED BY: _____

DATE	BY
1/21/97	JAD
1/22/97	JW
2/4/97	WJ

VALVE ASSEMBLY
 WEIR 02.50 THRU 08.00
 #101 THRU #250 DIRECT ACT.
 WITH FLANGED ENDS
 PLASTIC LINED

ITT Engineered Valves
 ITT Fluid Technology Corporation
 Lancaster, Pa

CS D 004434 REV -
 SHEET 2 OF 2