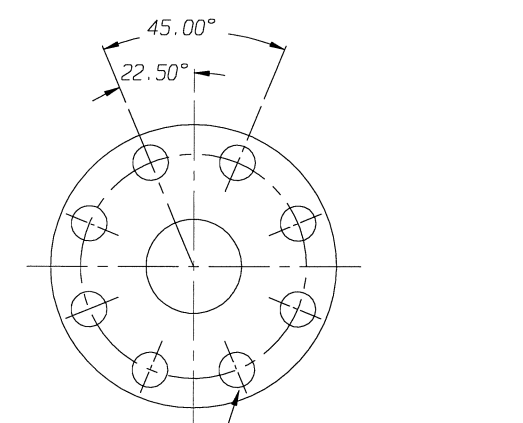
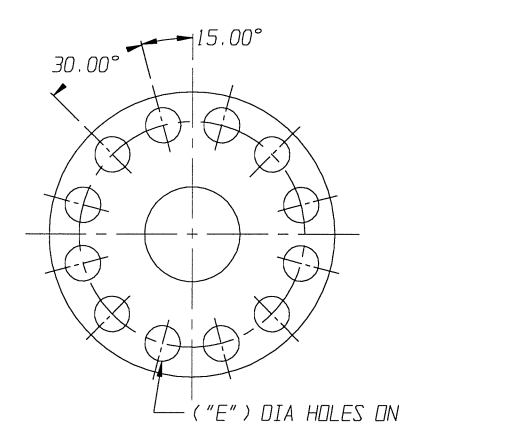


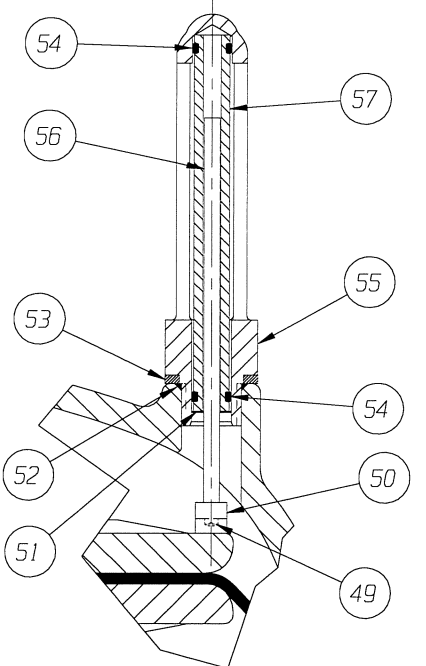
02.50 & 03.00 FLANGE



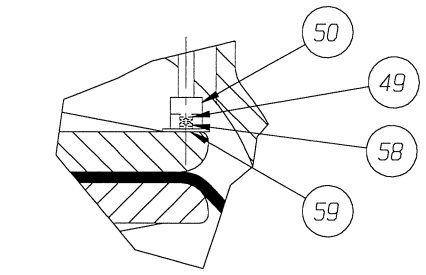
04.00 & 08.00 FLANGE



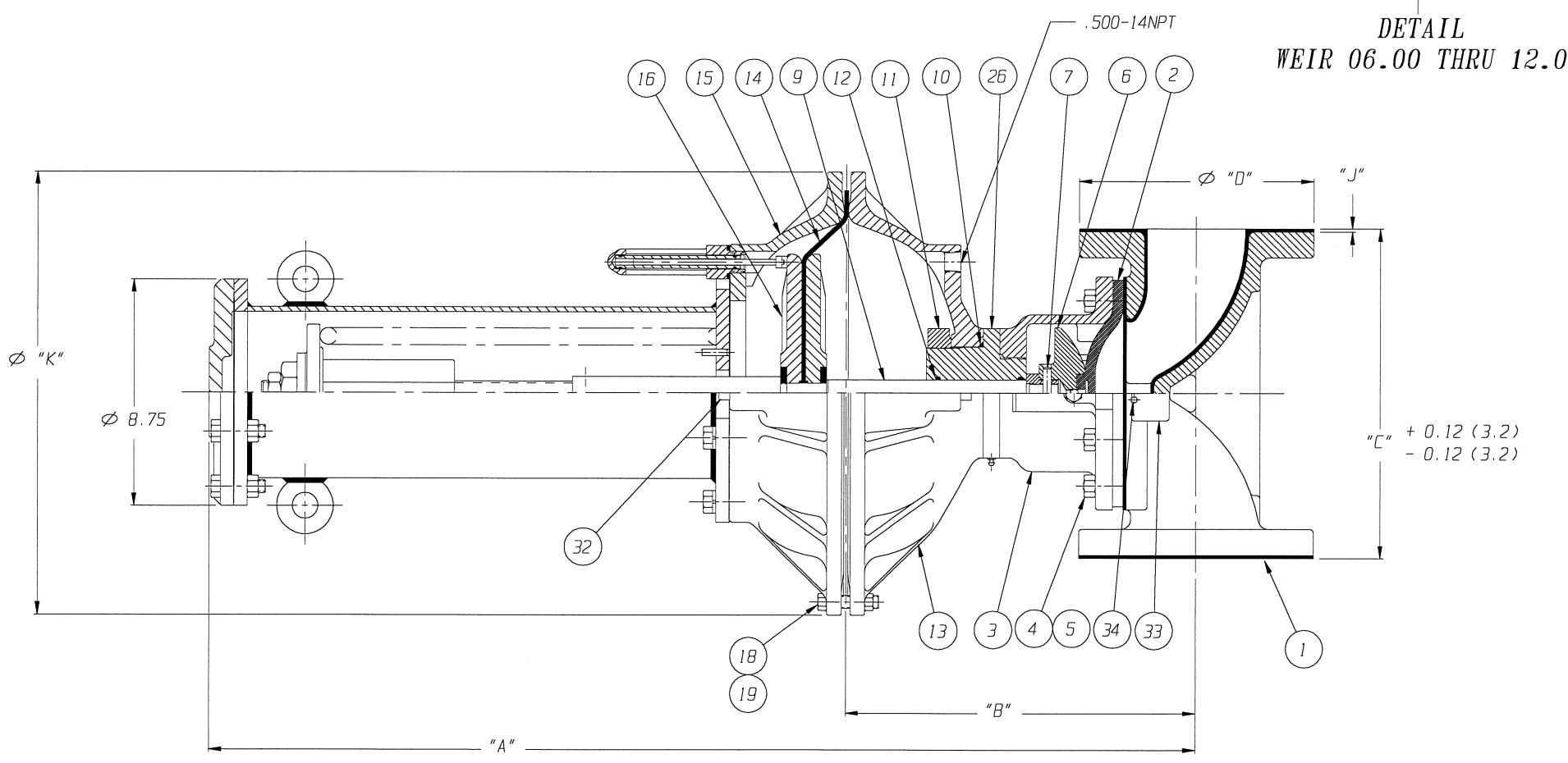
10.00 & 12.00 FLANGE



DETAIL: POSITION INDICATOR (OPTIONAL)



DETAIL: POSITION INDICATOR #250 AIR MOTOR ONLY



CLOSE COUPLED

ECN# 146

ITT ENGRD VLVS ORDER: -
 CUSTOMER: -
 CUSTOMER P.O.: -
 ISSUED BY: _____ CERTIFIED BY: _____

DATE	BY
DWN 1/21/97	JKD
CHKD 1/22/97	JW
APVD 2/4/97	AKK

VALVE ASSEMBLY
 WEIR 02.50 THRU 12.00
 #101 THRU #250 DIRECT ACT.
 WITH FLANGED ENDS
 RUBBER LINED

ITT Engineered Valves
 ITT Fluid Technology Corporation
 Lancaster, Pa

CS	D	004435	REV
		SHEET 1 OF 2	-

# 101 AIR MOTOR											
VALVE SIZE	'A'	'B'	'C'	'D' DIA	'E' DIA	'F' DIA	'G'	'H'	"J"	"K"	QTY. BONNET CAP SCREWS STUDS/NUTS
02.50	35.03 (889.8)	11.25 (285.8)	8.75 (222.3)	7.00 (177.8)	0.75 (19.0)	5.50 (139.7)	48.65 (1235.7)	24.87 (631.7)	0.12 (3.0)	17.12 (434.8)	4
03.00	35.63 (905.0)	11.86 (301.2)	10.25 (260.4)	7.50 (190.5)	0.75 (19.0)	6.00 (152.4)	49.25 (1250.9)	25.48 (647.2)	0.12 (3.0)		4
04.00	37.00 (939.8)	13.22 (335.8)	12.75 (323.9)	9.00 (228.6)	0.75 (19.0)	7.50 (190.5)	50.62 (1285.7)	26.84 (681.7)	0.12 (3.0)		8
06.00	39.78 (1010.4)	16.00 (406.4)	16.38 (416.0)	11.00 (279.4)	0.88 (22.3)	9.50 (241.3)	53.40 (1356.4)	29.63 (752.6)	0.19 (4.8)		10
08.00	43.90 (1115.1)	20.12 (511.0)	20.88 (530.4)	13.50 (342.9)	0.88 (22.3)	11.75 (298.4)	57.52 (1461.0)	33.75 (857.3)	0.19 (4.8)		14

# 130 AIR MOTOR											
VALVE SIZE	'A'	'B'	'C'	'D' DIA	'E' DIA	'F' DIA	'G'	'H'	"J"	"K"	QTY. BONNET CAP SCREWS STUDS/NUTS
02.50	35.03 (889.8)	11.07 (281.2)	8.75 (222.3)	7.00 (177.8)	0.75 (19.0)	5.50 (139.7)	48.65 (1235.7)	24.69 (627.1)	0.12 (3.0)	19.00 (482.6)	4
03.00	35.66 (905.8)	11.69 (296.9)	10.25 (260.4)	7.50 (190.5)	0.75 (19.0)	6.00 (152.4)	49.28 (1251.7)	25.31 (642.9)	0.12 (3.0)		4
04.00	37.03 (940.6)	13.05 (331.5)	12.75 (323.9)	9.00 (228.6)	0.75 (19.0)	7.50 (190.5)	50.65 (1286.5)	26.67 (677.4)	0.12 (3.0)		8
06.00	39.81 (1011.2)	15.84 (402.3)	16.38 (416.0)	11.00 (279.4)	0.88 (22.3)	9.50 (241.3)	53.43 (1357.1)	29.46 (748.3)	0.19 (4.8)		10
08.00	43.93 (1115.8)	19.96 (507.0)	20.88 (530.4)	13.50 (342.9)	0.88 (22.3)	11.75 (298.4)	57.56 (1462.0)	33.58 (852.9)	0.19 (4.8)		14

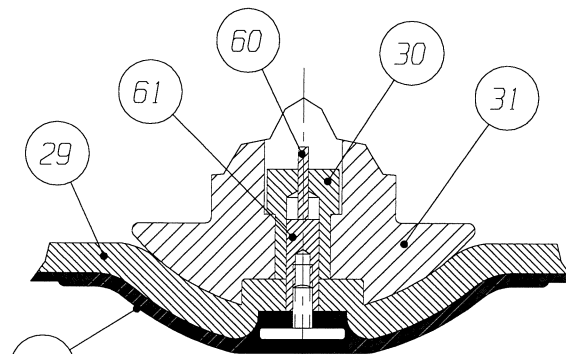
# 250 AIR MOTOR											
VALVE SIZE	'A'	'B'	'C'	'D' DIA	'E' DIA	'F' DIA	'G'	'H'	"J"	"K"	QTY. BONNET CAP SCREWS STUDS/NUTS
04.00	41.03 (1042.2)	15.05 (382.3)	12.75 (323.9)	9.00 (228.6)	0.75 (19.0)	7.50 (190.5)	54.65 (1388.1)	28.67 (728.2)	0.12 (3.0)	23.88 (606.5)	8
06.00	43.81 (1112.8)	17.84 (453.1)	16.38 (416.0)	11.00 (279.4)	0.88 (22.3)	9.50 (241.3)	57.43 (1458.7)	31.46 (799.1)	0.19 (4.8)		10
08.00	47.93 (1217.4)	21.96 (557.8)	20.88 (530.4)	13.50 (342.9)	0.88 (22.3)	11.75 (298.4)	61.56 (1563.6)	35.58 (903.7)	0.19 (4.8)		14
10.00	50.64 (1286.2)	24.67 (626.6)	25.38 (644.7)	16.00 (406.4)	1.00 (25.4)	14.25 (361.9)	64.25 (1632.0)	38.29 (972.6)	0.19 (4.8)		14
12.00	52.96 (1345.2)	26.99 (685.5)	29.88 (759.0)	19.00 (482.6)	1.00 (25.4)	17.00 (431.8)	66.59 (1691.4)	40.61 (1031.5)	0.19 (4.8)		14

DIMENSIONS SHOWN IN () PARENTHESES ARE MILLIMETERS.

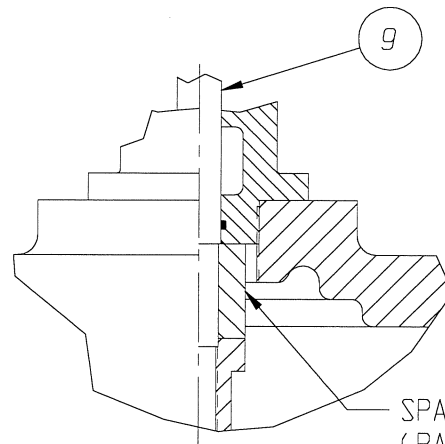
NOTE:

- △ 1. USED ONLY WITH #250 AIR MOTOR.
- ▲ 2. ITEM (#60) USED ONLY WITH VALVES 6" AND LARGER.
- 3. ITEM (#61) USED ONLY WITH A 10" VALVE.

* RECOMMENDED SPARE PARTS



TFE DIAPHRAGM
REFER TO NOTES 2 & 3
WEIR 02.50 THRU 10.00



BONNET SPACER DETAIL
WEIR 08.00 THRU 12.00

LIST OF PARTS			
ITEM	DESCRIPTION	MATERIAL	QTY.
1	BODY, FLANGED RUBBER LINED	-	1
* 2	DIAPHRAGM, ELASTOMER	-	1
3	BONNET, ADAPTER	-	1
4	HEX, CAP SCREWS OR STUDS	-	SEE CHARTS
5	NUTS	-	SEE CHARTS
6	COMPRESSOR, F/ ELASTOMER DIAPHRAGM	C.I. A-126, CL. B	1
7	PIN, SPIROL	STN. STL. TYPE 302	1
8	FITTING, LUBE	-	AR
9	SPINDLE, VALVE	STN. STL. A-582, TYPE 303	1
* 10	O-RING #238	BUNA-N	1
11	NUT, ADAPTER BUSHING	M.I. A-47, GR. 32510	AR
* 12	O-RING #214	BUNA-N	AR
* 13	COVER, LOWER	ALUMINUM B-85 52T SCB4A	1
* 14	DIAPHRAGM, AIR MOTOR	BUNA-N	1
15	COVER, UPPER	ALUMINUM B-85 52T SCB4A	1
16	PLATE, ACTUATOR	D.I. A-536	2
17	GASKET	SILICONE	1
18	SCREW, HEX HD. CAP	CAR. STL.	24
19	NUT, HEX	CAR. STL.	24
20	SPINDLE, VALVE YOKE	STN. STL.	1
21	YOKE	D.I. A-395, GR. 60-40-18	1
22	COUPLING, HALF	STN. STL. A-351, GR. CF8	2
23	SCREW, HEX HD. CAP	CAR. STL.	2
24	NUT, HEX	CAR. STL.	2
25	SCALE, INDICATING	STN. STL.	1
26	BUSHING, ADAPTER	D.I. A-395, GR. 60-40-18	AR
27	SPINDLE, ACTUATOR	STN. STL. A-564	1
* 28	DIAPHRAGM, PTFE	R2	1
* 29	CUSHION, BACKING	ELASTOMER	1
30	NUT, TUBE	BRASS B-16, C36000 H02	1
31	COMPRESSOR, F/ PLASTIC DIAPHRAGM	C.I. A-126, CL. B	1
32	PLUG, PIPE	CAR. STL. A-181, GR. 1	1
33	PLATE, IDENTIFICATION	STN. STL. A-240, TYPE 304	1
34	SCREW, DRIVE TYPE U	CAR. STL. SAE GR. 2	4
35	PLUG, VENT	STN. STL. TYPE 416	1
36	SPRING #96	CAR. STL. A-689	1
37	SPINDLE EXTENSION ASSEMBLY	-	1
38	BUSHING, ADJUSTING	M.I., A-47 GR. 32510	1
39	PLATE, SPRING	CAR. STL. A-689	1
40	NUT, HEX JAM	CAR. STL.	1
41	SCREW, HEX HD. CAP	CAR. STL.	8
42	WASHER, SPRINGLOCK	CAR. STL.	8
43	ASSEMBLY SPRING CASING	CAR. STL.	1
44	SCREW, HEX HD CAP	CAR. STL.	8
45	NUT, HEX	CAR. STL.	8
46	PLUG, PIPE	PLASTIC	1
△ 47	WASHER, IMPACT	STEEL, AISI 4140	2
48	CAP	D.I., A395 GR. 60-40-18	1
49	SCREW, MACHINE FILLISTER HD.	STN. STL. 18-8	1
50	MAGNET, CRUCIBLE U-101	-	1
51	RING, RETAINING	STEEL	1
* 52	O-RING #115	BUNA-N	1
53	SPACER, INDICATOR HOUSING	ALUMINUM B-211	1
* 54	O-RING #110	BUNA-N	2
55	HOUSING, INDICATOR	ALUMINUM B-26	1
56	ROD, INDICATOR	ALUMINUM B-211	1
57	TUBE, INDICATOR	PLASTIC	1
58	SCREW, DRIVE	CAR. STL.	2
59	PLATE, INDICATOR	CAR. STL.	1
▲ 60	KEY, TUBE NUT	BRASS, B-36 C26000	1
61	EXTENSION, STUD	STN. STL. A-582, TYPE 303	1

ECN# 146

ITEM _____ SHEET _____ OF _____

ITT ENGRD VLVS ORDER: - _____
 CUSTOMER: - _____
 CUSTOMER P.O.: - _____
 ISSUED BY: _____ CERTIFIED BY: _____

DATE	BY
DWN 1/21/97	JKD
CHKD 1/22/97	JW
APVD 2/4/97	DKL

VALVE ASSEMBLY
WEIR 02.50 THRU 12.00
#101 THRU #250 DIRECT ACT.
WITH FLANGED ENDS
RUBBER LINED

ITT Engineered Valves
 ITT Fluid Technology Corporation
 Lancaster, Pa

CS D 004435 REV -
 SHEET 2 OF 2