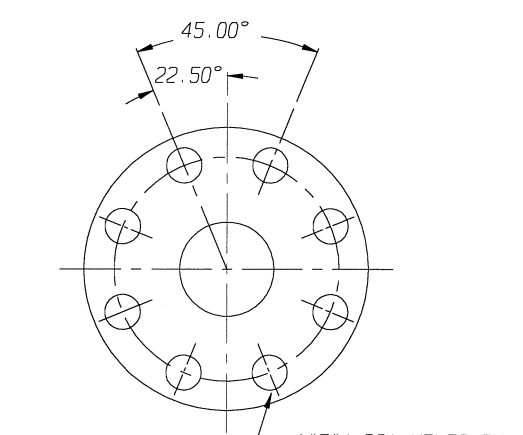


02.50 & 03.00 FLANGE



04.00 - 08.00 FLANGE

DETAIL WEIR 06.00 & 08.00

DETAIL: POSITION INDICATOR (OPTIONAL)

DETAIL: POSITION INDICATOR #250 AIR MOTOR ONLY

ECN# 146

ITT ENGRD VLVS ORDER: -
 CUSTOMER: -
 CUSTOMER P.O.: -
 ISSUED BY: _____ CERTIFIED BY: _____

DATE	BY
DWN 1/21/97	JKD
CHKD 1/22/97	[Signature]
APVD 2/4/97	[Signature]

VALVE ASSEMBLY
 WEIR 02.50 THRU 08.00
 #101 THRU #250 DIRECT ACT.
 WITH FLANGED ENDS
 GLASS LINED

ITT Engineered Valves
 ITT Fluid Technology Corporation
 Lancaster, Pa

CS	D	004436	REV
		SHEET 1 OF 2	-

# 101 AIR MOTOR										
VALVE SIZE	'A'	'B'	'C'	'D' DIA	'E' DIA	'F' DIA	'G'	'H'	'J'	QTY.-BONNET CAP SCREWS STUDS/NUTS
02.50	34.94 (887.5)	11.16 (283.5)	8.62 (218.9)	7.00 (177.8)	0.75 (19.0)	5.50 (139.7)	48.56 (1233.4)	24.78 (629.4)	17.12 (434.8)	4
03.00	35.56 (903.2)	11.77 (299.0)	10.12 (257.0)	7.50 (190.5)	0.75 (19.0)	6.00 (152.4)	49.19 (1249.4)	25.39 (644.9)		4
04.00	36.91 (937.5)	13.13 (333.5)	12.62 (320.5)	9.00 (228.6)	0.75 (19.0)	7.50 (190.5)	50.53 (1283.5)	26.75 (679.5)		8
06.00	39.64 (1006.8)	15.86 (402.8)	16.12 (409.4)	11.00 (279.4)	0.88 (22.3)	9.50 (241.3)	53.25 (1352.6)	29.48 (748.8)		10
08.00	43.75 (1111.2)	19.98 (507.5)	20.62 (523.7)	13.50 (342.9)	0.88 (22.3)	11.75 (298.4)	57.38 (1457.4)	33.60 (853.4)		14

# 130 AIR MOTOR										
VALVE SIZE	'A'	'B'	'C'	'D' DIA	'E' DIA	'F' DIA	'G'	'H'	'J'	QTY.-BONNET CAP SCREWS STUDS/NUTS
02.50	34.95 (887.7)	10.98 (278.9)	8.62 (218.9)	7.00 (177.8)	0.75 (19.0)	5.50 (139.7)	48.56 (1233.4)	24.60 (624.8)	19.00 (482.6)	4
03.00	35.56 (903.2)	11.60 (294.6)	10.12 (257.0)	7.50 (190.5)	0.75 (19.0)	6.00 (152.4)	49.19 (1249.4)	25.22 (640.6)		4
04.00	36.94 (938.3)	12.96 (329.2)	12.62 (320.5)	9.00 (228.6)	0.75 (19.0)	7.50 (190.5)	50.56 (1284.2)	26.58 (675.1)		8
06.00	39.66 (1007.4)	15.69 (398.5)	16.12 (409.4)	11.00 (279.4)	0.88 (22.3)	9.50 (241.3)	53.28 (1353.3)	29.31 (744.5)		10
08.00	43.78 (1112.0)	19.81 (503.2)	20.62 (523.7)	13.50 (342.9)	0.88 (22.3)	11.75 (298.4)	57.40 (1458.0)	33.43 (849.1)		14

# 250 AIR MOTOR										
VALVE SIZE	'A'	'B'	'C'	'D' DIA	'E' DIA	'F' DIA	'G'	'H'	'J'	QTY.-BONNET CAP SCREWS STUDS/NUTS
04.00	40.92 (1039.4)	14.96 (380.0)	12.62 (320.5)	9.00 (228.6)	0.75 (19.0)	7.50 (190.5)	54.54 (1385.3)	28.58 (725.9)	23.88 (606.5)	8
06.00	43.66 (1109.0)	17.69 (449.3)	16.12 (409.4)	11.00 (279.4)	0.88 (22.3)	9.50 (241.3)	57.28 (1454.9)	31.31 (795.3)		10
08.00	47.78 (1213.6)	21.81 (554.0)	20.62 (523.7)	13.50 (342.9)	0.88 (22.3)	11.75 (298.4)	61.40 (1559.6)	35.43 (899.9)		14

DIMENSIONS SHOWN IN () PARENTHESES ARE MILLIMETERS.

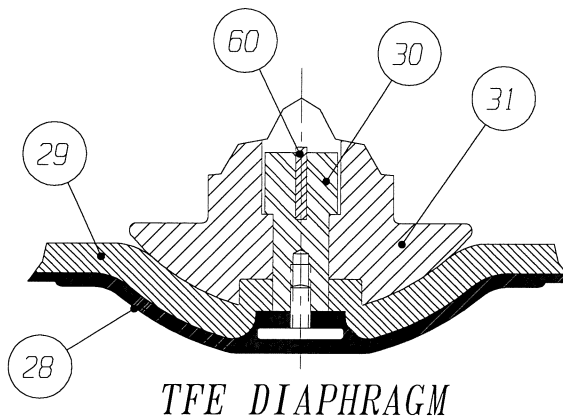
NOTE:

- ▲ 1. USED ONLY WITH #250 AIR MOTOR.
- ▲ 2. ITEM (#60) USED ONLY WITH VALVES 6" AND LARGER.

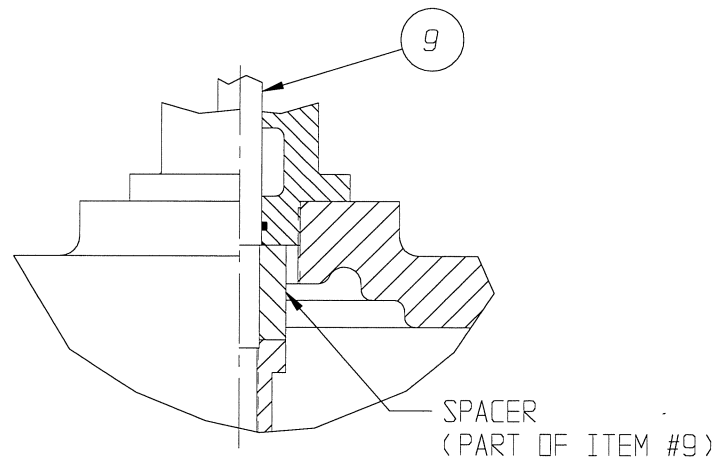
* RECOMMENDED SPARE PARTS

ECN# 146

ITT ENGRD VLVS ORDER: _____
 CUSTOMER: _____
 CUSTOMER P.O.: _____
 ISSUED BY: _____ CERTIFIED BY: _____



TFE DIAPHRAGM



BONNET SPACER DETAIL
WEIR 08.00

ITEM _____ SHEET _____ OF _____

LIST OF PARTS			
ITEM	DESCRIPTION	MATERIAL	QTY.
1	BODY, FLANGED GLASS LINED	-	1
* 2	DIAPHRAGM, ELASTOMER	-	1
3	BONNET, ADAPTER	-	1
4	HEX, CAP SCREWS OR STUDS	-	SEE CHARTS
5	NUTS	-	SEE CHARTS
6	COMPRESSOR, F/ ELASTOMER DIAPHRAGM	C.I. A-126, CL. B	1
7	PIN, SPIROL	STN. STL. TYPE 302	1
8	FITTING, LUBE	-	AR
9	SPINDLE, VALVE	STN. STL. A-582, TYPE 303	1
* 10	O-RING #238	BUNA-N	1
11	NUT, ADAPTER BUSHING	M.I. A-47, GR. 32510	AR
* 12	O-RING #214	BUNA-N	AR
* 13	COVER, LOWER	ALUMINUM B-85 52T SC84A	1
* 14	DIAPHRAGM, AIR MOTOR	BUNA-N	1
15	COVER, UPPER	ALUMINUM B-85 52T SC84A	1
16	PLATE, ACTUATOR	D.I. A-536	2
17	GASKET	SILICONE	1
18	SCREW, HEX HD. CAP	CAR. STL.	24
19	NUT, HEX	CAR. STL.	24
20	SPINDLE, VALVE YOKE	STN. STL.	1
21	YOKE	D.I. A-395, GR. 60-40-18	1
22	COUPLING, HALF	STN. STL. A-351, GR. CF8	2
23	SCREW, HEX HD. CAP	CAR. STL.	2
24	NUT, HEX	CAR. STL.	2
25	SCALE, INDICATING	STN. STL.	1
26	BUSHING, ADAPTER	D.I. A-395, GR. 60-40-18	AR
27	SPINDLE, ACTUATOR	STN. STL. A-564	1
* 28	DIAPHRAGM, PTFE	R2	1
* 29	CUSHION, BACKING	ELASTOMER	1
30	NUT, TUBE	BRASS B-16, C36000 H02	1
31	COMPRESSOR, F/ PLASTIC DIAPHRAGM	C.I. A-126, CL. B	1
32	PLUG, PIPE	CAR. STL. A-181, GR. 1	1
33	PLATE, IDENTIFICATION	STN. STL. A-240, TYPE 304	1
34	SCREW, DRIVE TYPE U	CAR. STL. SAE GR. 2	4
35	PLUG, VENT	STN. STL. TYPE 416	1
36	SPRING #96	CAR. STL. A-689	1
37	SPINDLE EXTENSION ASSEMBLY	-	1
38	BUSHING, ADJUSTING	M.I., A-47 GR. 32510	1
39	PLATE, SPRING	CAR. STL. A-689	1
40	NUT, HEX JAM	CAR. STL.	1
41	SCREW, HEX HD. CAP	CAR. STL.	8
42	WASHER, SPRINGLOCK	CAR. STL.	8
43	ASSEMBLY SPRING CASING	CAR. STL.	1
44	SCREW, HEX HD CAP	CAR. STL.	8
45	NUT, HEX	CAR. STL.	8
46	PLUG, PIPE	PLASTIC	1
Δ 47	WASHER, IMPACT	STEEL, AISI 4140	2
48	CAP	D.I., A395 GR. 60-40-18	1
49	SCREW, MACHINE FILLISTER HD.	STN. STL. 18-8	1
50	MAGNET, CRUCIBLE U-101	-	1
51	RING, RETAINING	STEEL	1
* 52	O-RING #115	BUNA-N	1
53	SPACER, INDICATOR HOUSING	ALUMINUM B-211	1
* 54	O-RING #110	BUNA-N	2
55	HOUSING, INDICATOR	ALUMINUM B-26	1
56	ROD, INDICATOR	ALUMINUM B-211	1
57	TUBE, INDICATOR	PLASTIC	1
58	SCREW, DRIVE	CAR. STL.	2
59	PLATE, INDICATOR	CAR. STL.	1
▲ 60	KEY, TUBE NUT	BRASS, B-36 C26000	1

DATE	BY
1/21/97	JRD
1/22/97	JW
2/4/97	WJ

VALVE ASSEMBLY
WEIR 02.50 THRU 08.00
#101 THRU #250 DIRECT ACT.
WITH FLANGED ENDS
GLASS LINED

ITT Engineered Valves
ITT Fluid Technology Corporation
Lancaster, Pa

CS D 004436 REV -
SHEET 2 OF 2