

ENGRD VALVES ORDER: - ITEM: -
 SHEET - OF -
 FIGURE NO.: -
 CUSTOMER: -
 CUSTOMER P.O.: -
 ISSUED BY: - CERTIFIED BY: -

UNLESS OTHERWISE SPECIFIED, DIMENSIONS NOT SHOWN IN BRACKETS [] ARE IN INCHES.
 DIMENSIONS SHOWN IN BRACKETS [] ARE IN MILLIMETERS.

THIRD ANGLE PROJECTION	DATE	BY
	DWN 11-15-06	JLW
	CHKD 11-15-06	STD
	APVD 11-15-06	STD

VALVE ASSEMBLY
 WEIR 00.50 - 02.00
 #12 DIRECT ACTING
 W/ FLANGED FLAT FACE
 ENDS

ITT Engineered Valves Group
 Lancaster, PA USA

ECN# 10671

ALL DIMENSIONS SHOWN ON THIS DRAWING ARE FOR REFERENCE ONLY

APVD 11-15-06 STD

CS D

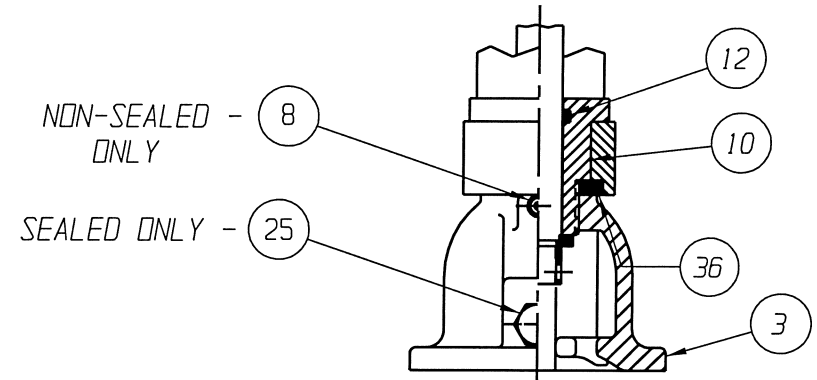
009568

REV -

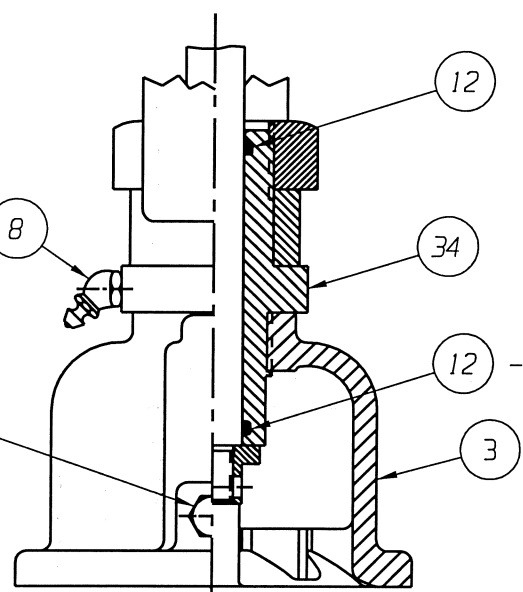
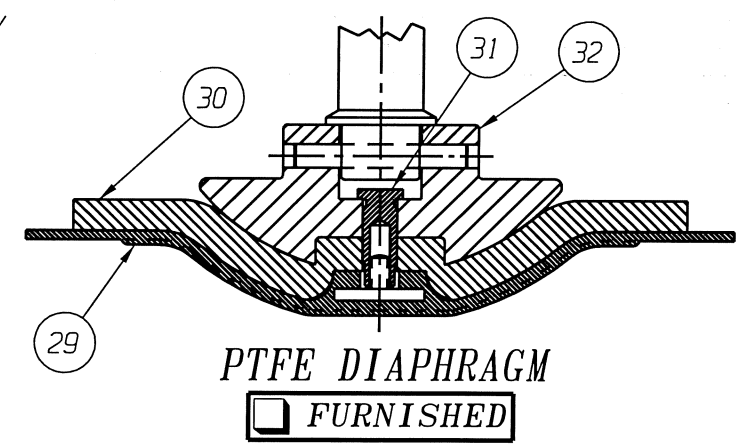
SHEET 1 OF 2
 www.engvalves.com

VALVE SIZE	'A'	'B'	'C'	'D' DIA	'E' DIA	'F' DIA	'G' DIA	'H'	O-RING (ITEM 12)
00.50	7.21 [183.1]	5.08 [129.0]	4.00 [101.6]	3.50 [88.9]	0.62 [15.7]	2.38 [60.5]	15.44 [392.2]	13.31 [338.1]	#112
00.75	8.21 [208.5]	6.09 [154.7]	5.50 [139.7]	3.88 [98.5]		2.75 [69.9]	16.25 [412.8]	14.13 [358.9]	
01.00				4.25 [108.0]		3.12 [79.2]			
01.25	9.61 [244.1]	7.49 [190.2]	6.50 [165.1]	5.00 [127.0]	0.62 [15.7]	3.50 [88.9]	18.15 [461.0]	16.03 [407.2]	#114
01.50						3.88 [98.6]			
02.00	10.36 [263.1]	8.23 [209.0]	7.50 [190.5]	6.00 [152.4]	0.75 [19.1]	4.75 [120.7]	18.71 [475.2]	16.58 [421.1]	

LIST OF PARTS			
ITEM	DESCRIPTION	MATERIAL	QTY.
1	BODY, FLANGED RAISED FACE	-	1
* 2	DIAPHRAGM, ELASTOMER	-	1
3	BONNET, ADAPTER	-	1
4	HEX, CAP SCREWS OR STUDS	-	4
5	NUTS	-	4
6	COMPRESSOR, F/ ELASTOMER DIAPHRAGM	ZINC B-86	1
7	PIN, SPIROL	STN. STL. TYPE 302	1
8	FITTING, LUBE	-	1
9	SPINDLE, VALVE	STN. STL. A-582, TYPE 303	1
10	BUSHING, ADAPTER	-	1
11	NUT, HEAVY HEX. JAM	CAR. STL.	1
* 12	O-RING 'SEE CHART'	BUNA-N	AR
13	COVER, LOWER	ALUMINUM	1
* 14	DIAPHRAGM, AIR MOTOR	BUNA-N	1
15	COVER, UPPER	ALUMINUM	1
16	PLATE, ACTUATOR	ALUMINUM B-85, SCB4A	2
17	NUT, HEX JAM	CAR. STL.	1
18	SCREW, HEX HD. CAP	CAR. STL.	12
19	NUT, HEX	CAR. STL.	12
20	SPINDLE, VALVE YOKE	STN. STL. A-582, TYPE 303	1
21	YOKE	D.I. A-395, GR. 60-40-18	1
22	COUPLING, HALF	STN. STL. A-351, GR. CFB	2
23	SCREW, HEX HD. CAP	CAR. STL.	2
24	NUT, HEX	CAR. STL.	2
25	PLUG, VENT	STN. STL. TYPE 304	1
26	SPINDLE, ACTUATOR	STN. STL. A-582, TYPE 302	1
27	PLATE, IDENTIFICATION	STN. STL. A-240, TYPE 304	1
28	SCREW, DRIVE TYPE U	CAR. STL. SAE GR.2	4
* 29	DIAPHRAGM, PTFE	R2	1
* 30	CUSHION, BACKING	ELASTOMER	1
31	NUT, TUBE	BRASS B-16, C36000 H02	1
32	COMPRESSOR, F/ PLASTIC DIAPHRAGM	ZINC B-86	1
33	SPRING #88	STEEL	1
34	BUSHING, ADAPTER	CAR. STL. A-108, GR.12L14	1
Δ 35	SPACER	CAR. STL.	1
▲ 36	SPACER, YOKE	BRASS	1
37	RING, RETAINING	STEEL	1
38	ROD, INDICATING	STN. STL. 18-8	1
39	SPRING #99	STEEL	1
40	CAP	PLASTIC	1
41	WASHER, SPRINGLOCK	CAR. STL.	2
42	WASHER	NYLON	1



00.50 THRU 01.00
STEEL BONNET
YOKE MOUNTED
 FURNISHED



01.25 - 02.00
STEEL BONNET
YOKE MOUNTED
 FURNISHED

* RECOMMENDED SPARE PARTS

NOTE:
 Δ 1. FOR USE WITH 01.25 THRU 02.00 VALVE ASSEMBLIES, ALSO VALVE TRAVEL WILL BE RESTRICTED TO 0.62.
 ▲ 2. USED ONLY WITH 00.50" STN. STL. BONNET.
 3. VALVE IS BI-DIRECTIONAL (NO FLOW ARROW).

ENGRD VALVES ORDER: - ITEM: -
 SHEET - OF -
 FIGURE NO.: -
 CUSTOMER: -
 CUSTOMER P.O.: -
 ISSUED BY: - CERTIFIED BY: -

UNLESS OTHERWISE SPECIFIED, DIMENSIONS NOT SHOWN IN BRACKETS [] ARE IN INCHES.
 DIMENSIONS SHOWN IN BRACKETS [] ARE IN MILLIMETERS.

THIRD ANGLE PROJECTION	DATE	BY
	DWN 11-15-06	JLW
	CHKD 11-15-06	STD
	APVD 11-15-06	STD

VALVE ASSEMBLY
 WEIR 00.50 - 02.00
 #12 DIRECT ACTING
 W/ FLANGED FLAT FACE
 ENDS

ITT Engineered Valves Group
 Lancaster, PA USA

CS D 009568 REV -
 SHEET 2 OF 2
 www.engvalves.com

ECN# 10671

ALL DIMENSIONS SHOWN ON THIS DRAWING ARE FOR REFERENCE ONLY