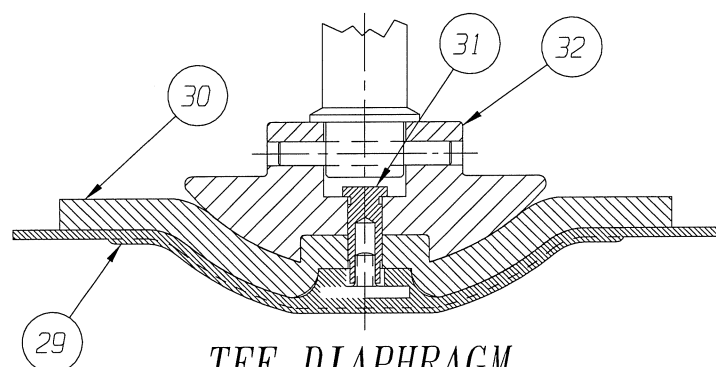
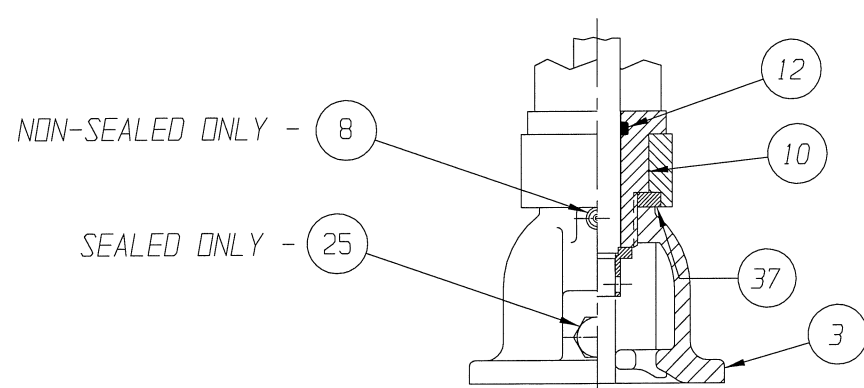


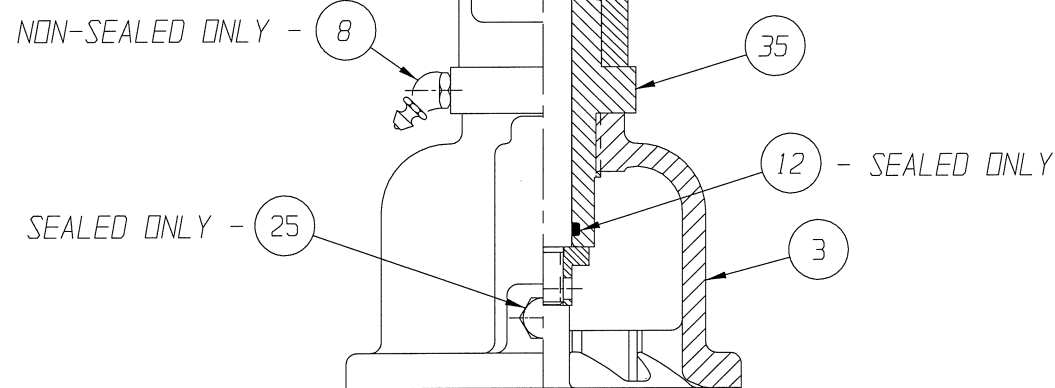
| VALVE SIZE | 'A' | 'B' | 'C' | 'D' DIA | 'E' DIA | 'F' DIA | 'G' | 'H' | 'J' | 'K' | 'L' | O-RING (ITEM #12) |
|------------|------------------|-----------------|-----------------|-----------------|----------------|-----------------|----------------|------------------|------------------|------------------|------------------|-------------------|
| 00.50 | 7.25 [184.2] | 3.52 [89.4] | 4.00 [101.6] | 3.50 [88.9] | 0.62 [15.7] | 2.38 [60.5] | 1.38 [35.1] | 7.41 [188.2] | 15.47 [392.9] | 11.74 [298.2] | 15.63 [397.0] | #112 |
| 00.75 | 8.25 [209.6] | 4.53 [115.1] | 5.50 [139.7] | 3.88 [98.6] | | 2.75 [69.9] | 1.69 [42.9] | 8.41 [213.6] | 16.28 [413.5] | 12.56 [319.0] | 16.44 [417.6] | |
| 01.00 | | | | 4.25 [108.0] | | 3.12 [79.2] | 2.00 [50.8] | | | | | |
| 01.25 | 9.60 [243.8] | 5.87 [149.1] | 6.50 [165.1] | 5.00 [127.0] | 0.62 [15.7] | 3.50 [88.9] | 2.50 [63.5] | 9.76 [247.9] | 18.13 [460.5] | 14.40 [365.8] | 18.29 [464.6] | #114 |
| 01.50 | | | | | | 3.88 [98.6] | 2.88 [73.2] | | | | | |
| 02.00 | 10.09 [256.3] | 6.36 [161.5] | 7.50 [190.5] | 6.00 [152.4] | 0.75 [19.1] | 4.75 [120.7] | 3.62 [91.9] | 10.25 [260.4] | 18.62 [472.9] | 14.89 [378.2] | 18.78 [477.0] | |



TFE DIAPHRAGM
 FURNISHED



00.50 THRU 01.00
 STEEL BONNET
 YOKE MOUNTED




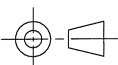
01.25 - 02.00
 STEEL BONNET
 YOKE MOUNTED

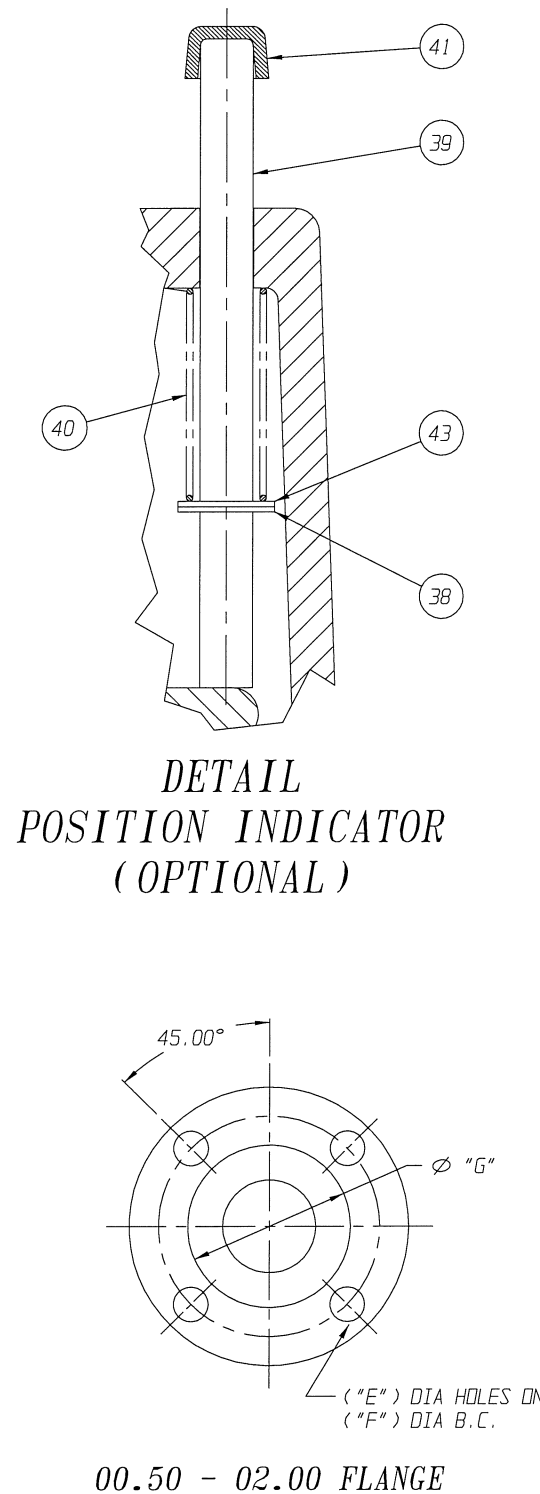
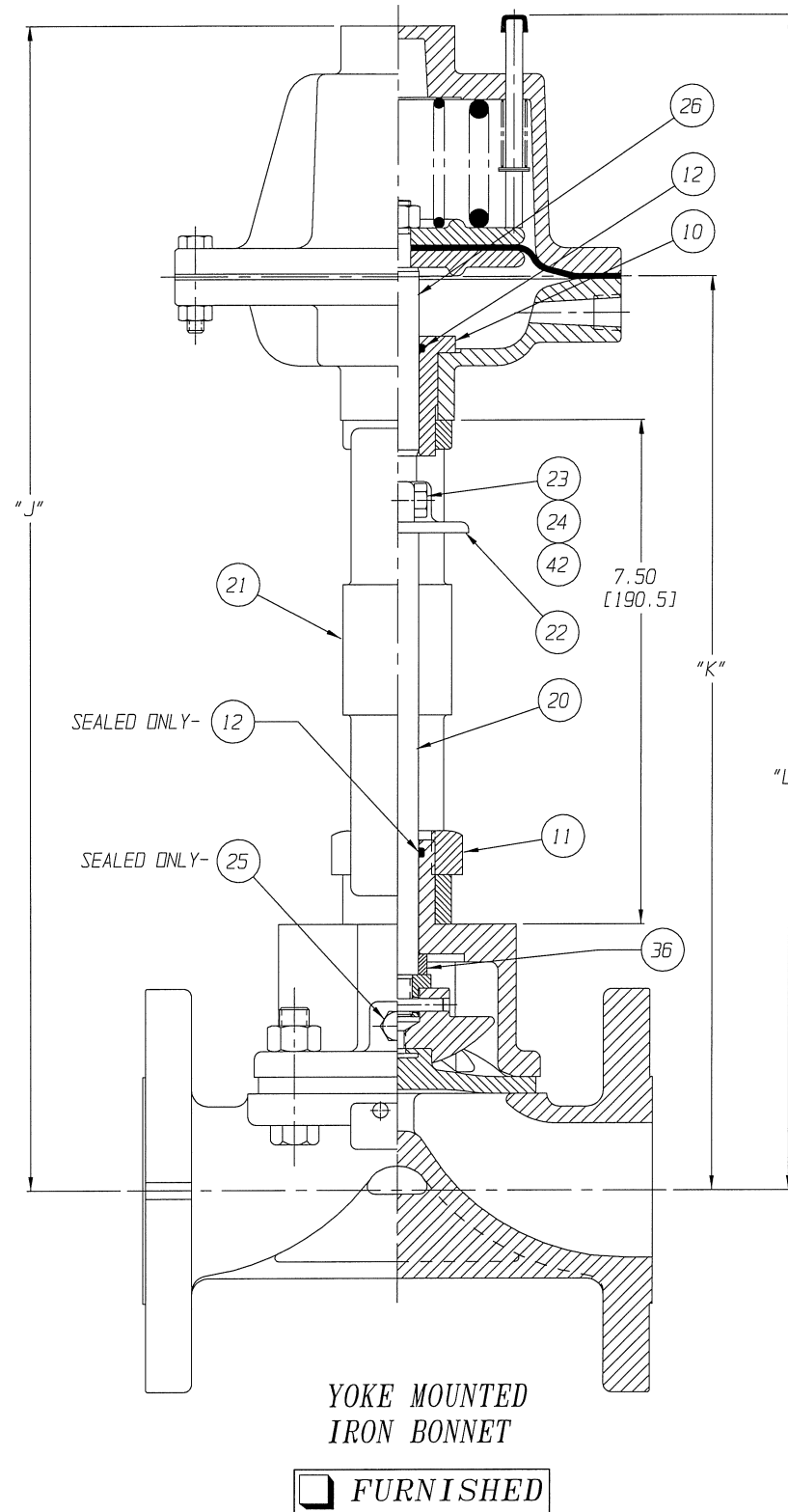
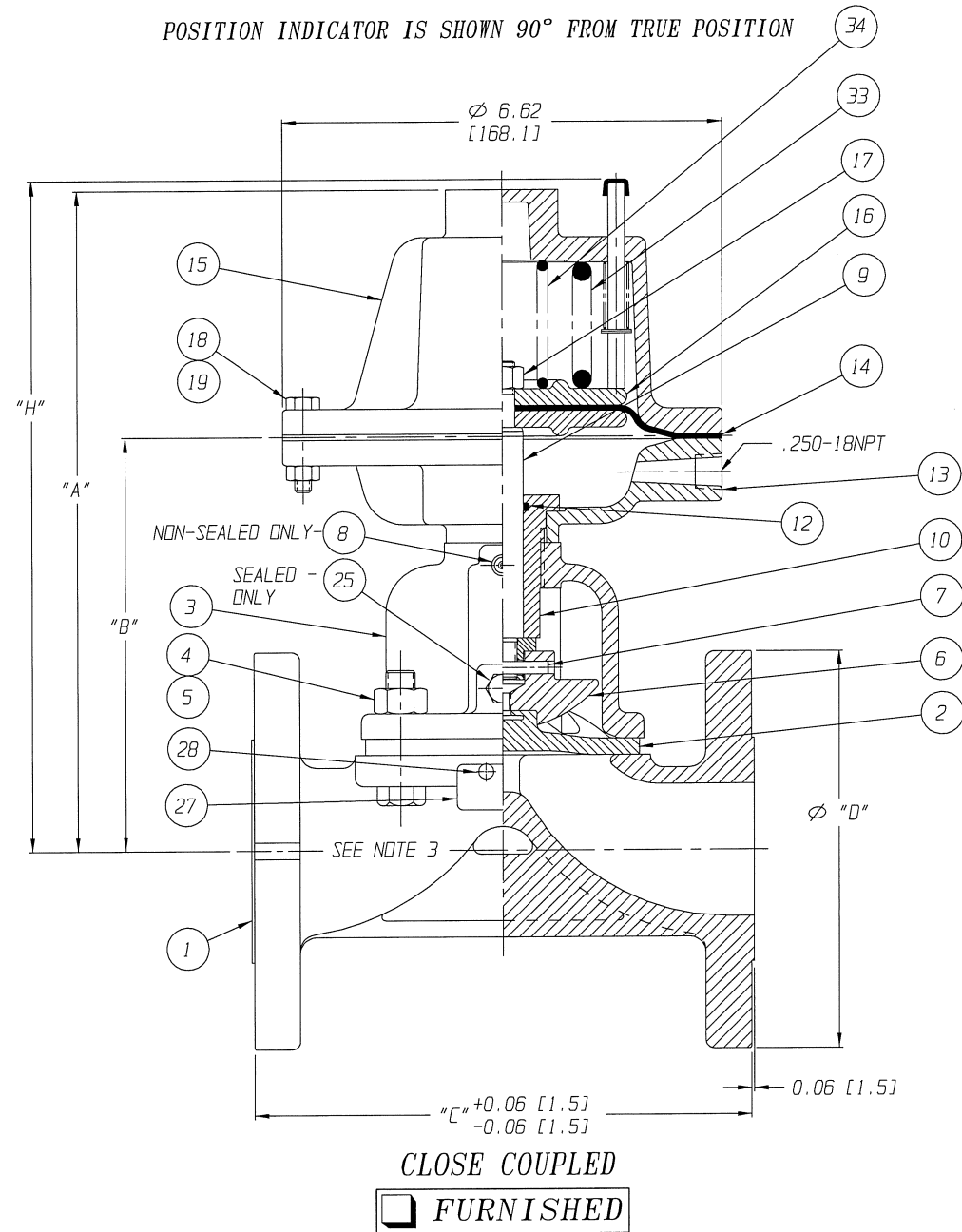
| LIST OF PARTS | | | |
|---------------|------------------------------------|----------------------------|------|
| ITEM | DESCRIPTION | MATERIAL | QTY. |
| 1 | BODY, FLANGED | - | 1 |
| * 2 | DIAPHRAGM, ELASTOMER | - | 1 |
| 3 | BONNET, ADAPTER | - | 1 |
| 4 | HEX, CAP SCREWS OR STUDS | - | 4 |
| 5 | NUTS | - | 4 |
| 6 | COMPRESSOR, F/ ELASTOMER DIAPHRAGM | ZINC B-86 | 1 |
| 7 | PIN, SPIRDL | STN. STL. TYPE 302 | 1 |
| 8 | FITTING, LUBE | - | 1 |
| 9 | SPINDLE, VALVE | STN. STL. A-582, TYPE 303 | 1 |
| 10 | BUSHING, ADAPTER | - | 1 |
| 11 | NUT, HEAVY HEX. JAM | CAR. STL. | 1 |
| * 12 | O-RING 'SEE CHART' | BLUNA-N | AR |
| 13 | COVER, LOWER | ALUMINUM | 1 |
| * 14 | DIAPHRAGM, AIR MOTOR | BLUNA-N | 1 |
| 15 | COVER, UPPER | ALUMINUM | 1 |
| 16 | PLATE, ACTUATOR | ALUMINUM B-85, SCB4A | 2 |
| 17 | NUT, HEX. | CAR. STL. | 1 |
| 18 | SCREW, HEX HD. CAP | CAR. STL. | 12 |
| 19 | NUT, HEX | CAR. STL. | 12 |
| 20 | SPINDLE, VALVE YOKE | STN. STL. A-582, TYPE 303 | 1 |
| 21 | YOKE | D.I. A-395, GR. 60-40-18 | 1 |
| 22 | COUPLING, HALF | STN. STL. A-351, GR. CF8 | 2 |
| 23 | SCREW, HEX HD. CAP | CAR. STL. | 2 |
| 24 | NUT, HEX | CAR. STL. | 2 |
| 25 | PLUG, VENT | STN. STL. TYPE 304 | 1 |
| 26 | SPINDLE, ACTUATOR | STN. STL. A-582, TYPE 302 | 1 |
| 27 | PLATE, IDENTIFICATION | STN. STL. A-240, TYPE 304 | 1 |
| 28 | SCREW, DRIVE TYPE U | CAR. STL. SAE GR. 2 | 4 |
| * 29 | DIAPHRAGM, PTFE | R2 | 1 |
| * 30 | CUSHION, BACKING | ELASTOMER | 1 |
| 31 | NUT, TUBE | BRASS B-16, C36000 H02 | 1 |
| 32 | COMPRESSOR, F/ PLASTIC DIAPHRAGM | ZINC B-86 | 1 |
| 33 | SPRING #88 | STEEL | 1 |
| 34 | SPRING #89 | STEEL | 1 |
| 35 | BUSHING, ADAPTER | CAR. STL. A-108, GR. 12L14 | 1 |
| Δ 36 | SPACER | CAR. STL. | 1 |
| ▲ 37 | SPACER, YOKE | BRASS | 1 |
| 38 | RING, RETAINING | STEEL | 1 |
| 39 | ROD, INDICATING | STN. STL. 18-8 | 1 |
| 40 | SPRING, #99 | STEEL | 1 |
| 41 | CAP | PLASTIC | 1 |
| 42 | WASHER, SPRINGLOCK | CAR. STL. | 2 |
| 43 | WASHER | NYLON | 1 |

* RECOMMENDED SPARE PARTS

- NOTE:
- Δ 1. FOR USE WITH 01.25 THRU 02.00 VALVE ASSEMBLIES, ALSO VALVE TRAVEL WILL BE RESTRICTED TO 0.62.
 - ▲ 2. USED ONLY WITH 00.50" STN. STL. BONNET.
 - 3. VALVE IS BI-DIRECTIONAL (NO FLOW ARROW).

UNLESS OTHERWISE SPECIFIED, DIMENSIONS NOT SHOWN IN BRACKETS [] ARE IN INCHES. DIMENSIONS SHOWN IN BRACKETS [] ARE IN MILLIMETERS.

| | | | | | | |
|-----------------------|---------|---|----------|------|--|---|
| ENGRD VALVES ORDER: - | ITEM: - | THIRD ANGLE PROJECTION | DATE | BY | VALVE ASSEMBLY WEIR 00.50 - 02.00 #12 REVERSE ACTING W/FLANGED ENDS, RAISED FACE |  ITT Engineered Valves www.engvalves.com |
| FIGURE NO.: - | |  | 11/15/06 | JLW | | |
| CUSTOMER: - | | | 11/15/06 | STD | | D 000000-000 SHEET 2 OF 2 REV - |
| CUSTOMER P.O.: - | | ALL DIMENSIONS SHOWN ON THIS DRAWING ARE FOR REFERENCE ONLY | 11/15/06 | APVD | MASTER DWG: 009569-2/2/- ECN# 10671 | |



UNLESS OTHERWISE SPECIFIED, DIMENSIONS NOT SHOWN IN BRACKETS [] ARE IN INCHES. DIMENSIONS SHOWN IN BRACKETS [] ARE IN MILLIMETERS.

| | | | | | |
|-----------------------|---------|--|---------------|-----|--------------------------------|
| ENGRD VALVES ORDER: - | ITEM: - | THIRD ANGLE PROJECTION | DATE | BY | VALVE ASSEMBLY |
| FIGURE NO.: - | | | DWN 11/15/06 | JLW | WEIR 00.50 - 02.00 |
| CUSTOMER: - | | | CHKD 11/15/06 | STD | #12 REVERSE ACTING |
| CUSTOMER P.O.: - | | | APVD 11/15/06 | STD | W/FLANGED ENDS, RAISED FACE |
| | | ALL DIMENSIONS SHOWN ON THIS DRAWING ARE FOR REFERENCE ONLY | | | MASTER DWG: 009569-1/2/- |
| | | | | | ECN# 10671 |
| | | | | | ISSUED BY: - |
| | | | | | CERT BY: - |



ITT

Engineered Valves
www.engvalves.com

000000-000 SHEET 1 OF 2 REV -