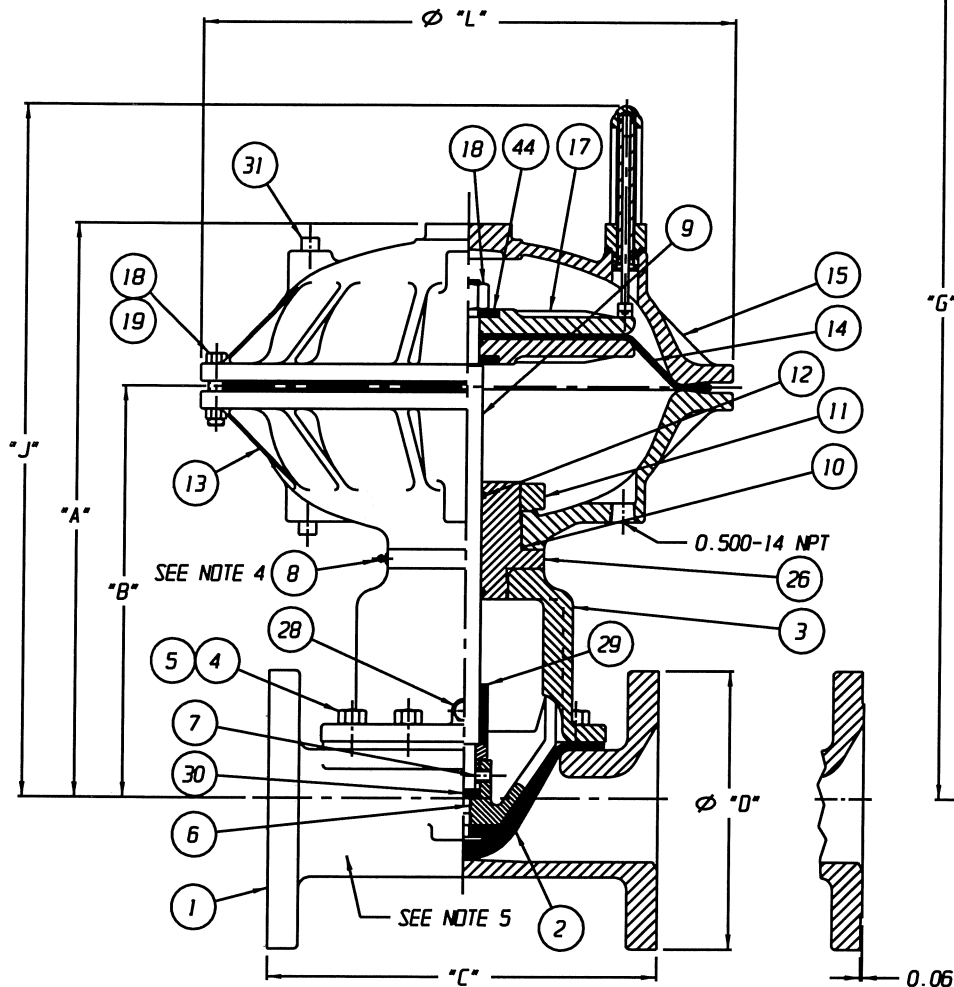
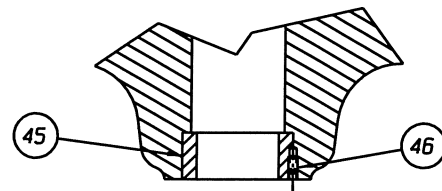


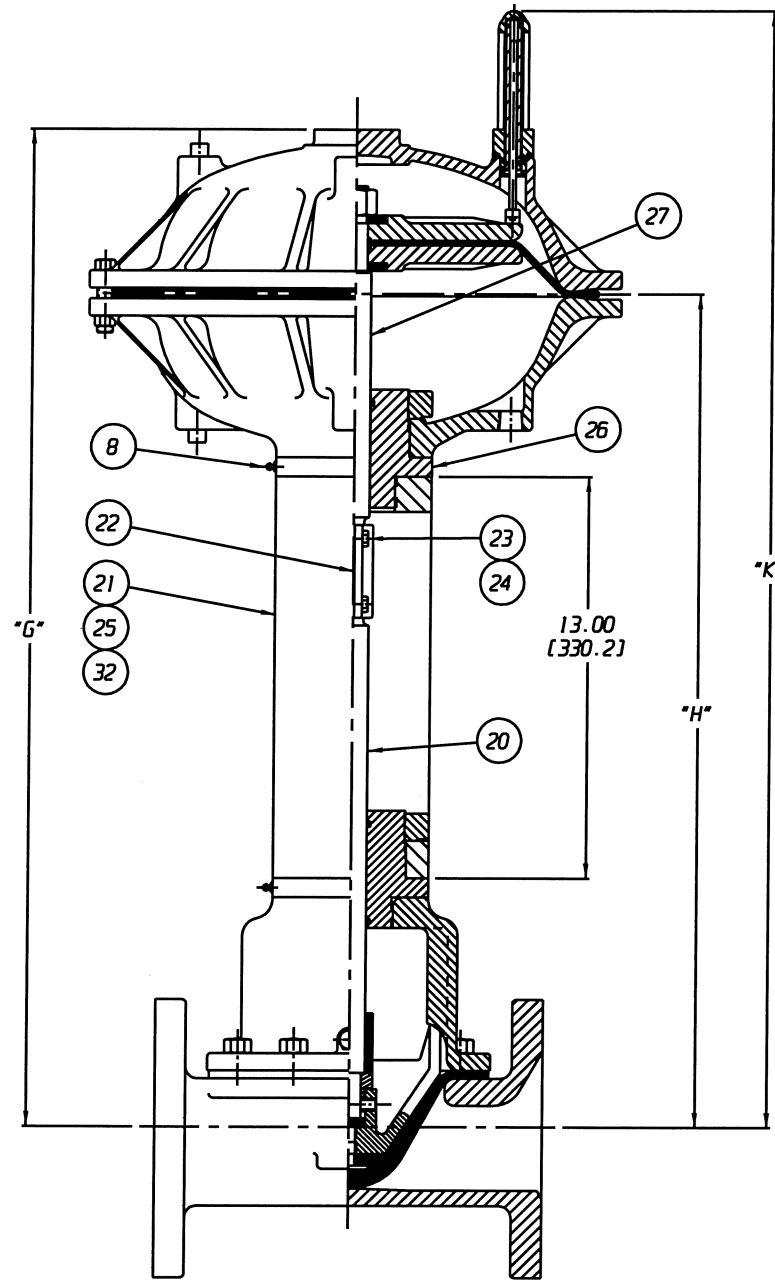
POSITION INDICATOR IS SHOWN 90° FROM TRUE POSITION



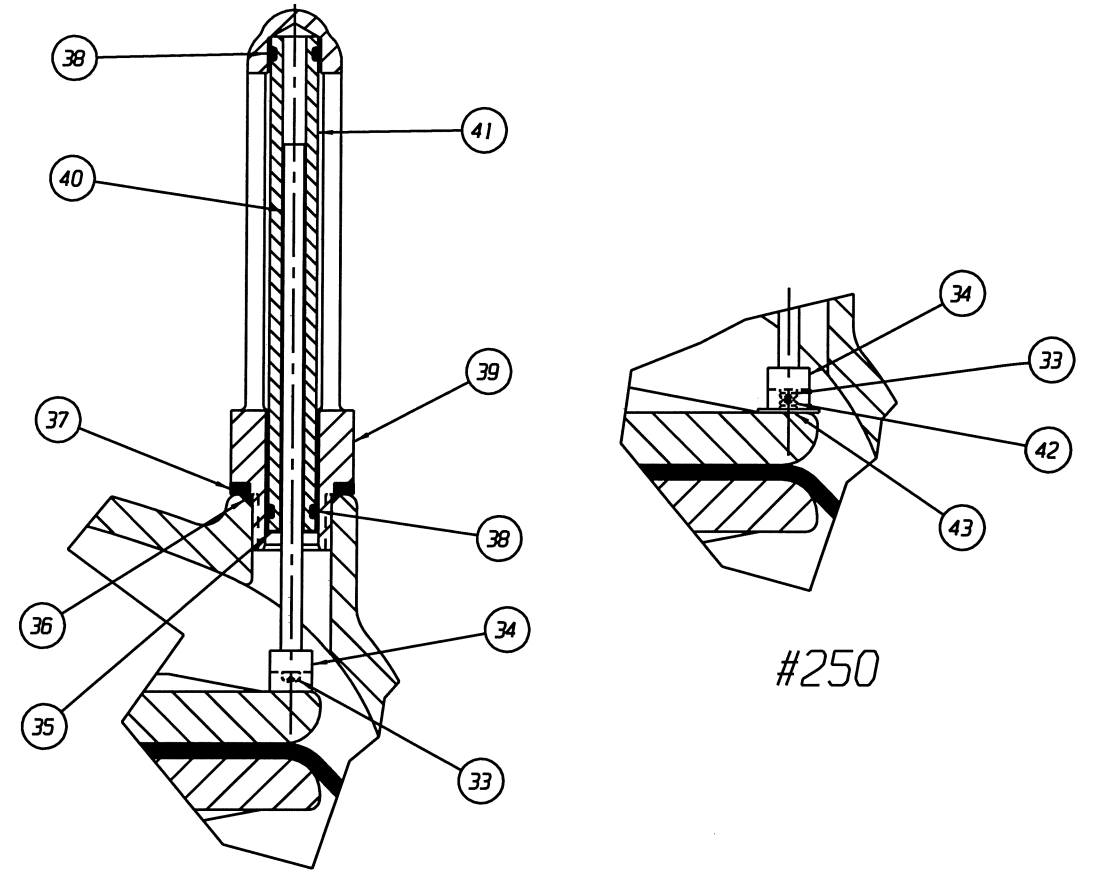
CLOSE COUPLED
FLAT FACED END FLANGE



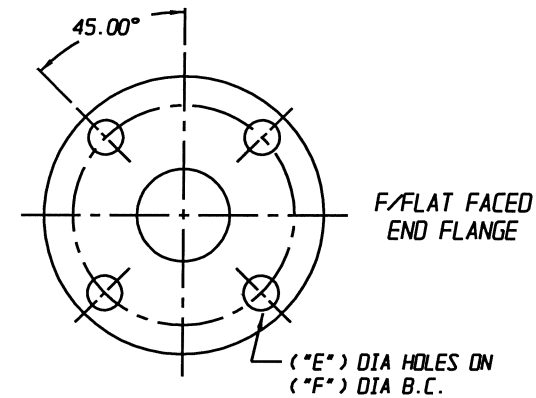
DETAIL: 08.00 BONNET
#250 AIR MOTOR ONLY



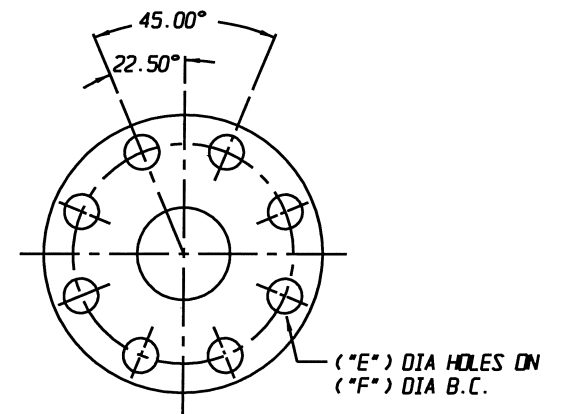
YOKES MOUNTED



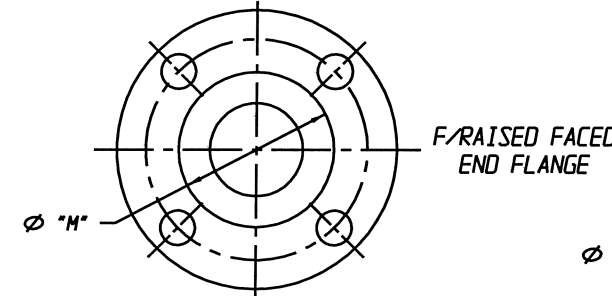
DETAIL: POSITION INDICATOR
(OPTIONAL)



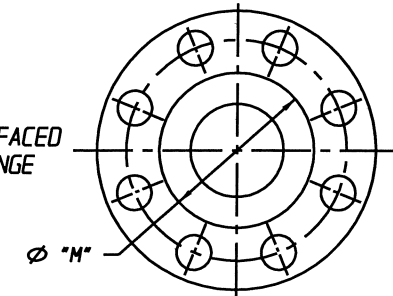
02.50 & 03.00 FLANGE



04.00 - 08.00 FLANGE



F/RAISED FACED
END FLANGE



UNLESS OTHERWISE SPECIFIED, DIMENSIONS NOT SHOWN IN BRACKETS [] ARE IN INCHES. DIMENSIONS SHOWN IN BRACKETS [] ARE IN MILLIMETERS.

| | | | | | |
|-----------------------|---------|------------------------|---------------|-----|---------------------------|
| ENGRD VALVES ORDER: - | ITEM: - | THIRD ANGLE PROJECTION | DATE | BY | VALVE ASSEMBLY |
| FIGURE NO.: - | | | DWN 09/10/08 | DJS | STRAIGHTWAY 02.50 - 08.00 |
| CUSTOMER: - | | | CHKD 09/10/08 | STD | #101 THRU #250 DOUBLE ACT |
| CUSTOMER P.O.: - | | | APVD 09/10/08 | STD | WITH FLANGED ENDS |
| | | | | | UNLINED |
| | | | | | MASTER DWG: 009722-1/2/- |
| | | | | | ECN# 12148 |

ITT
Engineered Valves
www.engvalves.com

000000-000
SHEET 1 OF 2
ISSUED BY: -
CERT BY: -

101 AIR MOTOR

| VALVE SIZE | 'A' | 'B' | 'C' | 'D' DIA | 'E' DIA | 'F' DIA | 'G' | 'H' | 'J' | 'K' | 'L' | 'M' | QTY. BONNET CAP SCREWS STUDS/NUTS |
|------------|------------------|------------------|------------------|------------------|----------------|-----------------|------------------|------------------|------------------|-------------------|------------------|-----------------|-----------------------------------|
| 02.50 | 17.78 [451.6] | 12.51 [317.8] | 8.75 [222.3] | 7.00 [177.8] | 0.75 [19.0] | 5.50 [139.7] | 31.40 [797.6] | 26.13 [663.7] | 21.61 [548.9] | 35.23 [894.8] | 17.12 [434.8] | 4.12 [104.6] | 4 |
| 03.00 | 17.75 [450.8] | 12.48 [317.0] | 10.25 [260.4] | 7.50 [190.5] | 0.75 [19.0] | 6.00 [152.4] | 31.37 [796.8] | 26.10 [662.9] | 21.58 [548.1] | 35.20 [894.1] | | 5.00 [127.0] | 6 |
| 04.00 | 18.78 [477.0] | 13.51 [343.2] | 12.75 [323.8] | 9.00 [228.6] | 0.75 [19.0] | 7.50 [190.5] | 32.40 [823.0] | 27.13 [689.1] | 22.61 [574.3] | 36.23 [920.2] | | 6.19 [157.2] | 8 |
| 06.00 | 22.06 [560.3] | 16.79 [426.5] | 16.38 [416.1] | 11.00 [279.4] | 0.88 [22.3] | 9.50 [241.3] | 35.68 [906.3] | 30.41 [772.4] | 25.89 [657.6] | 39.51 [1003.6] | | 8.56 [217.4] | 8 |

130 AIR MOTOR

| VALVE SIZE | 'A' | 'B' | 'C' | 'D' DIA | 'E' DIA | 'F' DIA | 'G' | 'H' | 'J' | 'K' | 'L' | 'M' | QTY. BONNET CAP SCREWS STUDS/NUTS |
|------------|------------------|------------------|------------------|------------------|----------------|-----------------|------------------|------------------|------------------|------------------|------------------|-----------------|-----------------------------------|
| 02.50 | 17.78 [451.6] | 12.32 [312.9] | 8.75 [222.3] | 7.00 [177.8] | 0.75 [19.0] | 5.50 [139.7] | 31.40 [797.6] | 25.94 [658.9] | 21.44 [544.6] | 35.06 [890.5] | 19.00 [482.6] | 4.12 [104.6] | 4 |
| 03.00 | 17.75 [450.8] | 12.29 [312.2] | 10.25 [260.4] | 7.50 [190.5] | 0.75 [19.0] | 6.00 [152.4] | 31.37 [796.8] | 25.91 [658.1] | 21.41 [543.8] | 35.03 [889.8] | | 5.00 [127.0] | 6 |
| 04.00 | 18.78 [477.0] | 13.32 [338.3] | 12.75 [323.8] | 9.00 [228.6] | 0.75 [19.0] | 7.50 [190.5] | 32.40 [823.0] | 26.94 [684.3] | 22.44 [570.0] | 36.06 [915.9] | | 6.19 [157.2] | 8 |
| 06.00 | 22.06 [560.3] | 16.60 [421.6] | 16.38 [416.1] | 11.00 [279.4] | 0.88 [22.3] | 9.50 [241.3] | 35.68 [906.3] | 30.22 [767.6] | 25.72 [653.3] | 39.34 [999.2] | | 8.56 [217.4] | 8 |

250 AIR MOTOR


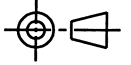
| VALVE SIZE | 'A' | 'B' | 'C' | 'D' DIA | 'E' DIA | 'F' DIA | 'G' | 'H' | 'J' | 'K' | 'L' | 'M' | QTY. BONNET CAP SCREWS STUDS/NUTS |
|------------|------------------|------------------|------------------|------------------|----------------|------------------|-------------------|------------------|------------------|-------------------|------------------|------------------|-----------------------------------|
| 02.50 | 21.90 [556.3] | 14.32 [363.7] | 8.75 [222.3] | 7.00 [177.8] | 0.75 [19.0] | 5.50 [139.7] | 35.52 [902.2] | 27.94 [709.7] | 26.13 [663.7] | 39.75 [1009.7] | 23.88 [606.5] | 4.12 [104.6] | 4 |
| 03.00 | 21.87 [555.5] | 14.29 [363.0] | 10.25 [260.4] | 7.50 [190.5] | 0.75 [19.0] | 6.00 [152.4] | 35.49 [901.4] | 27.91 [708.9] | 26.10 [662.9] | 39.72 [1008.9] | | 5.00 [127.0] | 6 |
| 04.00 | 22.90 [581.7] | 15.32 [389.1] | 12.75 [323.8] | 9.00 [228.6] | 0.75 [19.0] | 7.50 [190.5] | 36.52 [927.6] | 28.94 [735.1] | 27.13 [689.1] | 40.75 [1035.0] | | 6.19 [157.2] | 8 |
| 06.00 | 26.18 [665.0] | 18.60 [472.4] | 16.38 [416.1] | 11.00 [279.4] | 0.88 [22.3] | 9.50 [241.3] | 39.80 [1010.9] | 32.22 [818.4] | 30.41 [772.4] | 44.03 [1118.4] | | 8.56 [217.4] | 8 |
| 08.00 | 30.94 [785.9] | 23.36 [593.3] | 20.88 [530.4] | 13.50 [342.9] | 0.88 [22.4] | 11.75 [298.4] | 44.56 [1131.8] | 36.98 [939.3] | 35.17 [893.3] | 48.79 [1239.3] | | 10.62 [269.7] | 12 |

NOTE:
 △ 1. USED ONLY WITH #250 AIR MOTOR, 08.00 SIZE.
 * 2. RECOMMENDED SPARE PARTS.
 † 3. SEALED BONNET ONLY.
 ‡ 4. UNSEALED BONNET ONLY.
 § 5. VALVE IS BI-DIRECTIONAL (NO FLOW ARROW).

LIST OF PARTS

| ITEM | DESCRIPTION | MATERIAL | QTY. |
|------|------------------------------|---------------------------|------------|
| 1 | BODY, FLANGED | - | 1 |
| 2 | DIAPHRAGM | - | 1 |
| 3 | BONNET, ADAPTER | - | 1 |
| 4 | HEX, CAP SCREWS OR STUDS | - | SEE CHARTS |
| 5 | NUTS | - | SEE CHARTS |
| 6 | COMPRESSOR | C.I. A-126, CL. B | 1 |
| 7 | PIN, SPIROL | STN. STL. TYPE 302 | 1 |
| 8 | FITTING, LUBE | - | AR |
| 9 | SPINDLE, VALVE | STN. STL. A-582, TYPE 303 | 1 |
| 10 | O-RING #238 | BUNA-N | 1 |
| 11 | NUT, ADAPTER BUSHING | D.I. | AR |
| 12 | O-RING #214 | BUNA-N | AR |
| 13 | COVER, LOWER | ALUMINUM | 1 |
| 14 | DIAPHRAGM, AIR MOTOR | BUNA-N | 1 |
| 15 | COVER, UPPER | ALUMINUM | 1 |
| 16 | PLATE, ACTUATOR | D.I. A-536 | 2 |
| 17 | NUT, HEAVY HEX. | CAR. STL. | 1 |
| 18 | SCREW, HEX HD. CAP | CAR. STL. | 24 |
| 19 | NUT, HEX | CAR. STL. | 24 |
| 20 | SPINDLE, VALVE YOKE | STN. STL. | 1 |
| 21 | YOKE | D.I. A-395, GR. 60-40-18 | 1 |
| 22 | COUPLING, HALF | STN. STL. A-351, GR. CFB | 2 |
| 23 | SCREW, HEX HD. CAP | CAR. STL. | 2 |
| 24 | NUT, HEX | CAR. STL. | 2 |
| 25 | SCALE, INDICATING | STN. STL. | 1 |
| 26 | BUSHING, ADAPTER | D.I. A-395, GR. 60-40-18 | AR |
| 27 | SPINDLE, ACTUATOR | STN. STL. A-564 | 1 |
| 28 | PLUG, VENT | STN. STL. TYPE 416 | 1 |
| 29 | SPACER, STOP COLLAR | CAR. STL. | 1 |
| 30 | INSERT | CAR. STL. | 1 |
| 31 | PLUG, PIPE | CAR. STL. A-181, GR. 1 | 1 |
| 32 | SCREW, DRIVE TYPE U | CAR. STL. SAE GR. 2 | 2 |
| 33 | SCREW, MACHINE FILLISTER HD. | STN. STL. 18-8 | 1 |
| 34 | MAGNET, CRUCIBLE U-181 | - | 1 |
| 35 | RING, RETAINING | STEEL | 1 |
| 36 | O-RING #115 | BUNA-N | 1 |
| 37 | SPACER, INDICATOR HOUSING | ALUMINUM B-211 | 1 |
| 38 | O-RING #110 | BUNA-N | 2 |
| 39 | HOUSING, INDICATOR | ALUMINUM B-26 | 1 |
| 40 | ROD, INDICATOR | ALUMINUM B-211 | 1 |
| 41 | TUBE, INDICATOR | PLASTIC | 1 |
| 42 | SCREW, DRIVE | CAR. STL. | 2 |
| 43 | PLATE, INDICATOR | CAR. STL. | 1 |
| 44 | WASHER, IMPACT | STEEL, AISI 4140 | 2 |
| 45 | BUSHING, BONNET | BRZ. | 1 |
| 46 | SCREW, SET SOC. HD. | A.S. | 1 |

UNLESS OTHERWISE SPECIFIED, DIMENSIONS NOT SHOWN IN BRACKETS [] ARE IN INCHES. DIMENSIONS SHOWN IN BRACKETS [] ARE IN MILLIMETERS.

| | | | | | | |
|-----------------------|---------|---|--------------------------|-----|--|---|
| ENGRD VALVES ORDER: - | ITEM: - | THIRD ANGLE PROJECTION | DATE | BY | VALVE ASSEMBLY STRAIGHTWAY 02.50 - 08.00 #101 THRU #250 DOUBLE ACT WITH FLANGED ENDS UNLINED |  Engineered Valves www.engvalves.com |
| FIGURE NO.: - | |  | DWN 09/10/08 | DJS | | |
| CUSTOMER: - | | | CHKD 09/10/08 | STO | | |
| CUSTOMER P.O.: - | | ALL DIMENSIONS SHOWN ON THIS DRAWING ARE FOR REFERENCE ONLY | APVD 09/10/08 | STO | | |
| | | | MASTER DWG: 009722-2/2/- | | TECN# 12148 | ISSUED BY: - |
| | | | | | 000000-000 | SHEET 2 OF 2 |
| | | | | | | REV - |