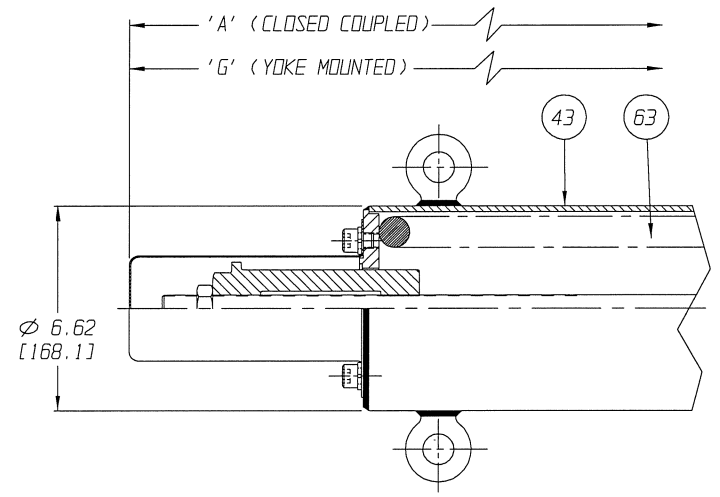
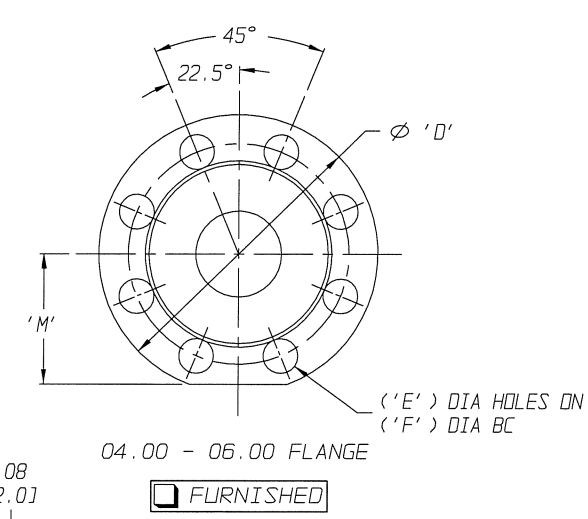
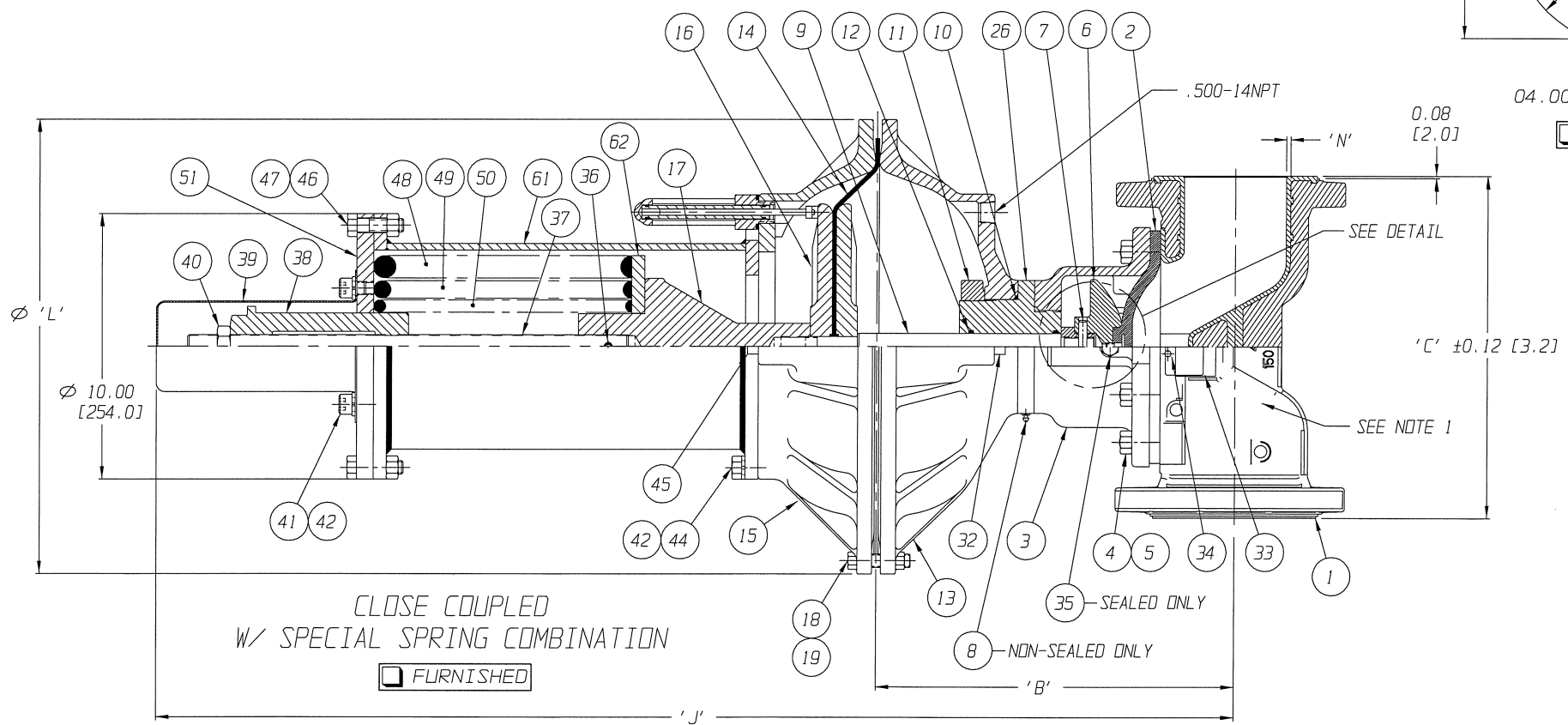


YOKE MOUNTED W/ SPECIAL SPRING COMBINATION
 FURNISHED

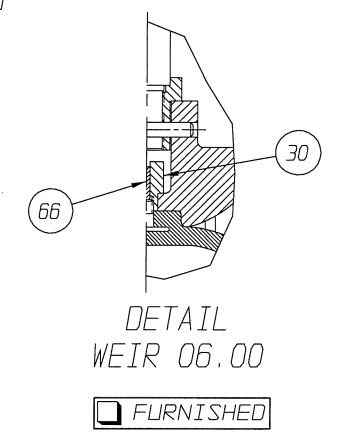
POSITION INDICATOR IS SHOWN 90° FROM TRUE POSITION



#130 SPRING CASE
 FURNISHED



CLOSE COUPLED
 W/ SPECIAL SPRING COMBINATION
 FURNISHED



UNLESS OTHERWISE SPECIFIED, DIMENSIONS NOT SHOWN IN BRACKETS [] ARE IN INCHES. DIMENSIONS SHOWN IN BRACKETS [] ARE IN MILLIMETERS.

ENGRD VALVES ORDER: -	ITEM: -	THIRD ANGLE PROJECTION	DATE	BY	VALVE ASSEMBLY
FIGURE NO.: -			DWN 03/01/13	DJS	WEIR 03.00 THRU 06.00
CUSTOMER: -			CHKD 03/01/13	STO	#101 THRU #130 REVERSE ACT.
CUSTOMER P.O.: -			APVD 03/01/13	STO	WITH FLANGED ENDS
					PFA PLASTIC LINED
					MASTER DWG: 009814-1/2/A
					ECN# 14262
					ISSUED BY: -
					CERT BY: -

ITT
 Engineered Valves
 www.engvalves.com

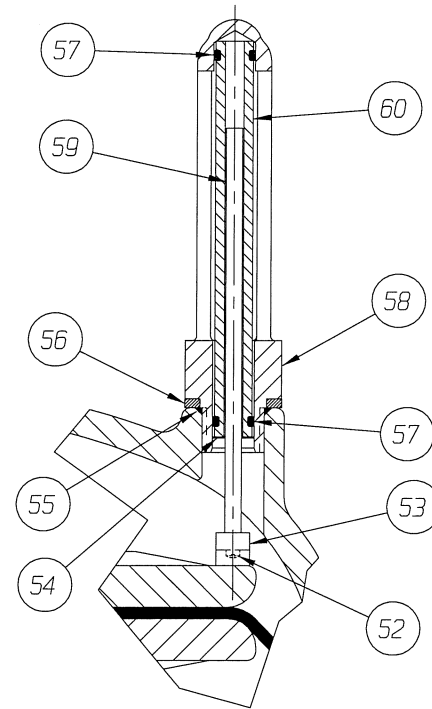
D 000000-000 SHEET 1 OF 2 REV -
 ISSUED BY: - CERT BY: -

101 AIR MOTOR

VALVE SIZE	'A'	'B'	'C'	'D' DIA	'E' DIA	'F' DIA	'G'	'H'	'J'	'K'	'L'	'M'	'N'	QTY. BONNET CAP SCREWS STUDS/NUTS
03.00	48.83 [1240.3]	12.20 [309.9]	10.25 [260.4]	7.50 [190.5]	0.75 [19.0]	6.00 [152.4]	62.45 [1586.2]	25.82 [655.8]	39.26 [997.2]	52.88 [1343.2]		3.35 [85.1]	0.16 [4.1]	4
04.00	50.13 [1273.3]	13.51 [343.2]	12.88 [327.2]	9.00 [228.6]	0.75 [19.0]	7.50 [190.5]	63.75 [1619.2]	27.13 [689.1]	40.56 [1030.2]	54.18 [1376.2]	17.12 [434.8]	4.17 [105.9]		8
06.00	53.11 [1349.0]	16.49 [418.8]	16.38 [416.1]	11.00 [279.4]	0.88 [22.3]	9.50 [241.3]	66.73 [1694.9]	30.11 [764.8]	43.54 [1105.9]	57.16 [1451.9]		5.12 [130.1]	0.18 [4.6]	10

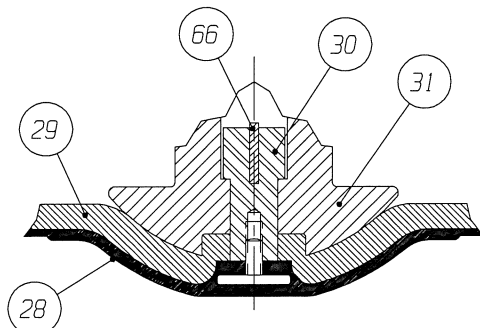
130 AIR MOTOR

VALVE SIZE	'A'	'B'	'C'	'D' DIA	'E' DIA	'F' DIA	'G'	'H'	'J'	'K'	'L'	'M'	'N'	QTY. BONNET CAP SCREWS STUDS/NUTS
03.00	48.83 [1240.3]	12.01 [305.0]	10.25 [260.4]	7.50 [190.5]	0.75 [19.0]	6.00 [152.4]	62.45 [1586.2]	25.63 [651.0]	39.26 [997.2]	52.88 [1343.2]		3.35 [85.1]	0.16 [4.1]	4
04.00	50.13 [1273.3]	13.32 [338.3]	12.88 [327.2]	9.00 [228.6]	0.75 [19.0]	7.50 [190.5]	63.75 [1619.2]	26.94 [684.3]	40.56 [1030.2]	54.18 [1376.2]	19.00 [482.6]	4.17 [105.9]		8
06.00	53.11 [1349.0]	16.30 [414.0]	16.38 [416.1]	11.00 [279.4]	0.88 [22.3]	9.50 [241.3]	66.73 [1694.9]	29.92 [760.0]	43.54 [1105.9]	57.16 [1451.9]		5.12 [130.1]	0.18 [4.6]	10



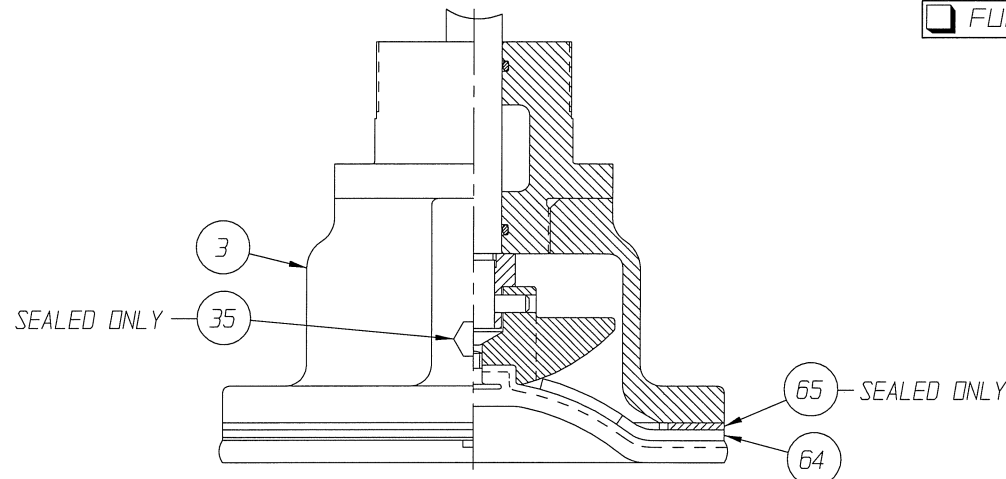
DETAIL: POSITION INDICATOR (OPTIONAL)

FURNISHED



TFE DIAPHRAGM REFER TO NOTE 2

FURNISHED



STN STL BONNET DETAIL WEIR 03.00 & 04.00 E/31

FURNISHED

NOTE:

1. VALVE IS BI-DIRECTIONAL (NO FLOW ARROW).
- ▲ 2. ITEM (#66) USED ONLY WITH VALVES 6.00" AND LARGER.
- △ 3. SPRING #130 CANNOT BE PURCHASED SEPARATELY, AS IT IS INCLUDED IN CASE ASSY ITEM 43.
- * 4. RECOMMENDED SPARE PARTS.

UNLESS OTHERWISE SPECIFIED, DIMENSIONS NOT SHOWN IN BRACKETS [] ARE IN INCHES. DIMENSIONS SHOWN IN BRACKETS [] ARE IN MILLIMETERS.

LIST OF PARTS			
ITEM	DESCRIPTION	MATERIAL	QTY.
1	BODY, FLANGED PFA LINED	-	1
2	DIAPHRAGM, ELASTOMER	-	1
* 3	BONNET, ADAPTER	-	1
4	HEX, CAP SCREWS OR STUDS	-	SEE CHARTS
5	NUTS	-	SEE CHARTS
6	COMPRESSOR, F/ ELASTOMER DIAPHRAGM	C.I. A-126	1
7	PIN, SPIROL	STN. STL. TYPE 302	1
8	FITTING, LUBE	-	AR
9	SPINDLE, VALVE	STN. STL. A-564 630 H900	1
* 10	O-RING #238	BUNA-N	1
11	NUT, ADAPTER BUSHING	D.I.	AR
* 12	O-RING #214	BUNA-N	AR
13	COVER, LOWER	ALUMINUM	1
* 14	DIAPHRAGM, AIR MOTOR	BUNA-N	1
15	COVER, UPPER	ALUMINUM	1
16	PLATE, ACTUATOR	D.I. A-536	2
17	CONNECTOR, SPINDLE	D.I. A-395 GR. 60-40-18	1
18	SCREW, HEX HD. CAP	CAR. STL.	24
19	NUT, HEX	CAR. STL.	24
20	SPINDLE, VALVE YOKE	STN. STL.	1
21	YOKE	D.I. A-395, GR. 60-40-18	1
22	COUPLING, PAIR	STN. STL. A-351, GR. CFB	1
23	SCREW, HEX HD. CAP	CAR. STL.	4
24	NUT, HEX	CAR. STL.	4
25	SCALE, INDICATING	STN. STL.	1
26	BUSHING, ADAPTER	-	AR
27	SPINDLE, ACTUATOR	STN. STL. A-564 630	1
* 28	DIAPHRAGM, PTFE	R2	1
* 29	CUSHION, BACKING	ELASTOMER	1
30	NUT, TUBE	BRASS B-16, C36000 H02	1
31	COMPRESSOR, F/ PTFE DIAPHRAGM	C.I. A-126	1
32	PLUG, PIPE	CAR. STL. A-181, GR. 1	1
33	PLATE, IDENTIFICATION	STN. STL. A-240, TYPE 304	1
34	SCREW, DRIVE TYPE U	CAR. STL. SAE GR. 2	4
35	PLUG, VENT	STN. STL. TYPE 416	1
36	PIN, SPIROL	STN. STL. TYPE 302	1
37	EXTENSION, SPINDLE	CAR. STL. A-108	1
38	BUSHING, ADJUSTING	D.I.	1
39	SHIELD, TRAVEL STOP	CAR. STL.	1
40	NUT, HEX. JAM	CAR. STL.	1
41	SCREW, HEX. SOC. HD. CAP	CAR. STL.	2
42	WASHER, SPRING LOCK	CAR. STL.	10
43	ASSEMBLY, SPRING CASING #130	CAR. STL.	1
44	SCREW, HEX. HD. CAP	CAR. STL.	8
45	PLUG, PIPE	PLASTIC	1
46	SCREW, HEX. HD. CAP	CAR. STL.	8
47	NUT, HEX.	CAR. STL.	8
48	SPRING, #98	CAR. STL. A-689	1
49	SPRING, #96	CAR. STL. A-689	1
50	SPRING, #97	CAR. STL. A-689	1
51	COVER, SPRING CASE	CAR. STL.	1
52	SCREW, MACHINE FILLISTER HD.	STN. STL. 18-8	1
53	MAGNET, U-181	-	1
54	RING, RETAINING	STEEL	1
* 55	O-RING #115	BUNA-N	1
56	SPACER, INDICATOR HOUSING	ALUMINUM B-211	1
* 57	O-RING #110	BUNA-N	2
58	HOUSING, INDICATOR	ALUMINUM B-26	1
59	ROD, INDICATOR	ALUMINUM B-211	1
60	TUBE, INDICATOR	PLASTIC	1
61	SPRING CASE, SPECIAL SPRING COMBO	CAR. STL.	1
62	PLATE, SPRING SUPPORT	CAR. STL. A-36	1
△ 63	SPRING, #130	CAR. STL. A-689	1
64	FINGERPLATE	STN. STL. A-240 TYPE 304	1
65	GASKET	EPDM	1
▲ 66	KEY, TUBE NUT	BRASS, B-36 C26000	1

ENGRD VALVES ORDER: -	ITEM: -	THIRD ANGLE PROJECTION	DATE	BY	VALVE ASSEMBLY WEIR 03.00 THRU 06.00 #101 THRU #130 REVERSE ACT. WITH FLANGED ENDS PFA PLASTIC LINED	 Engineered Valves www.engvalves.com
FIGURE NO.:			DWN 03/01/13	DJS		
CUSTOMER:			CHKD 03/01/13	STD		
CUSTOMER P.O.:			APVD 03/01/13	STD		
		ALL DIMENSIONS SHOWN ON THIS DRAWING ARE FOR REFERENCE ONLY	APVD 03/01/13	STD	MASTER DWG: 009814-2/2/A	ECN# 14262
			ISSUED BY: -	CERT BY: -	000000-000	SHEET 2 OF 2