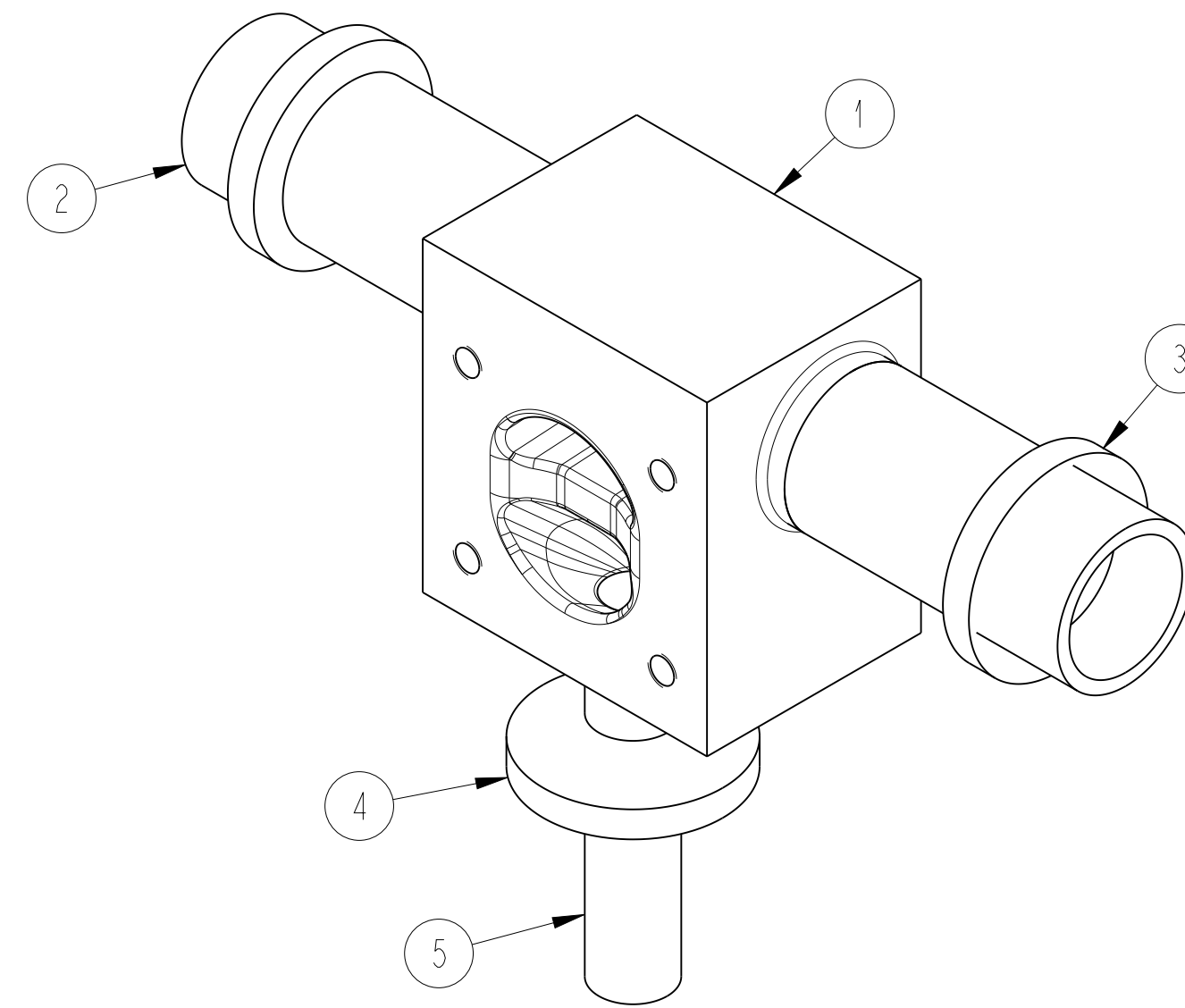
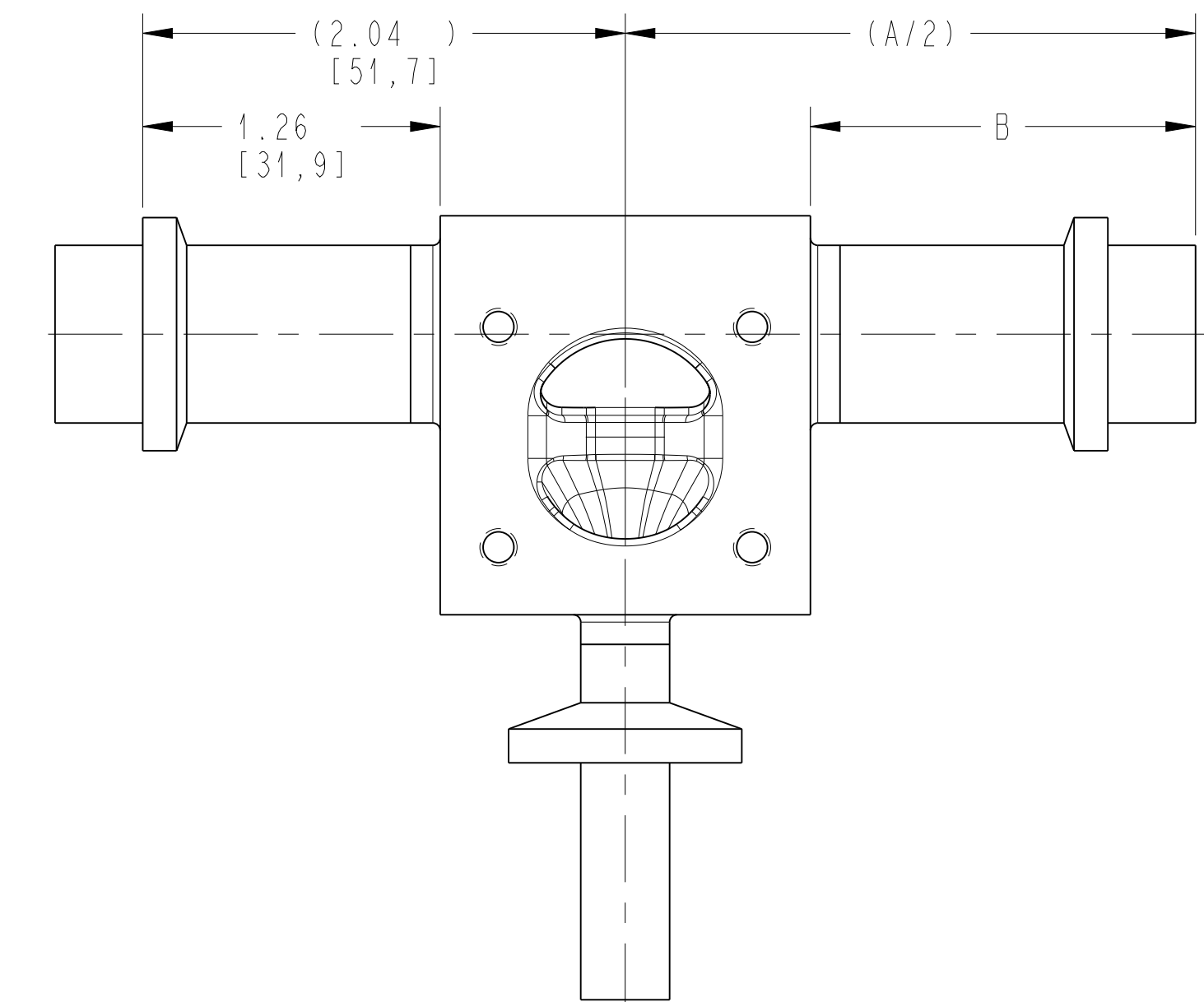


RUN X VALVE	(A)	B	(C)	(C1)	(D)	(E)	(L/D)
1/4" X 1/4"	4.81 [122,2]	1.63 [41,3]	2.56 [64,9]	1.56 [39,5]	0.00 [0,0]	0.18 [4,6]	0.76 [19,4]
3/8" X 1/4"	4.81 [122,2]	1.63 [41,3]	2.62 [66,6]	1.62 [41,2]	0.08 [2,0]	0.25 [6,3]	0.98 [24,8]
3/8" X 3/8"	4.81 [122,2]	1.63 [41,3]	2.62 [66,6]	1.62 [41,2]	0.08 [2,0]	0.25 [6,3]	0.98 [24,8]
1/2" X 1/4"	4.81 [122,2]	1.63 [41,3]	2.67 [67,9]	1.67 [42,5]	0.14 [3,5]	0.30 [7,6]	1.32 [33,6]
1/2" X 3/8"	4.81 [122,2]	1.63 [41,3]	2.67 [67,9]	1.67 [42,5]	0.14 [3,5]	0.30 [7,6]	1.32 [33,6]
1/2" X 1/2"	4.81 [122,2]	1.63 [41,3]	2.67 [67,9]	1.67 [42,5]	0.14 [3,5]	0.30 [7,6]	0.87 [22,1]
3/4" X 1/4"	4.81 [122,2]	1.63 [41,3]	2.81 [71,4]	1.81 [46,0]	0.30 [7,6]	0.43 [11,0]	1.28 [32,4]
3/4" X 3/8"	4.81 [122,2]	1.63 [41,3]	2.81 [71,4]	1.81 [46,0]	0.30 [7,6]	0.43 [11,0]	1.28 [32,4]
3/4" X 1/2"	4.81 [122,2]	1.63 [41,3]	2.81 [71,4]	1.81 [46,0]	0.30 [7,6]	0.43 [11,0]	0.84 [21,4]
1" X 1/4"	4.81 [122,2]	1.63 [41,3]	2.94 [74,7]	1.94 [49,3]	0.42 [10,7]	0.57 [14,4]	1.31 [33,2]
1" X 3/8"	4.81 [122,2]	1.63 [41,3]	2.94 [74,7]	1.94 [49,3]	0.42 [10,7]	0.57 [14,4]	1.31 [33,2]
1" X 1/2"	4.81 [122,2]	1.63 [41,3]	2.94 [74,7]	1.94 [49,3]	0.42 [10,7]	0.57 [14,4]	0.86 [21,9]
1-1/2" X 1/4"	4.81 [122,2]	1.63 [41,3]	3.20 [81,4]	2.20 [56,0]	0.63 [15,9]	0.83 [21,1]	1.42 [36,1]
1-1/2" X 3/8"	4.81 [122,2]	1.63 [41,3]	3.20 [81,4]	2.20 [56,0]	0.63 [15,9]	0.83 [21,1]	1.42 [36,1]
1-1/2" X 1/2"	4.81 [122,2]	1.63 [41,3]	3.20 [81,4]	2.20 [56,0]	0.63 [15,9]	0.83 [21,1]	0.94 [23,8]
2" X 1/4"	5.31 [134,9]	1.88 [47,6]	3.47 [88,0]	2.47 [62,6]	0.81 [20,5]	1.09 [27,7]	1.58 [40,2]
2" X 3/8"	5.31 [134,9]	1.88 [47,6]	3.47 [88,0]	2.47 [62,6]	0.81 [20,5]	1.09 [27,7]	1.58 [40,2]
2" X 1/2"	5.31 [134,9]	1.88 [47,6]	3.47 [88,0]	2.47 [62,6]	0.81 [20,5]	1.09 [27,7]	1.04 [26,5]
2-1/2" X 1/4"	5.31 [134,9]	1.88 [47,6]	3.74 [95,0]	2.74 [69,6]	1.16 [29,4]	1.36 [34,6]	2.24 [56,9]
2-1/2" X 3/8"	5.31 [134,9]	1.88 [47,6]	3.74 [95,0]	2.74 [69,6]	1.16 [29,4]	1.36 [34,6]	2.24 [56,9]
2-1/2" X 1/2"	5.31 [134,9]	1.88 [47,6]	3.74 [95,0]	2.74 [69,6]	1.16 [29,4]	1.36 [34,6]	1.48 [37,5]
3" X 1/4"	5.31 [134,9]	1.88 [47,6]	3.99 [101,5]	2.99 [76,1]	1.25 [31,8]	1.62 [41,1]	2.29 [58,2]
3" X 3/8"	5.31 [134,9]	1.88 [47,6]	3.99 [101,5]	2.99 [76,1]	1.25 [31,8]	1.62 [41,1]	2.29 [58,2]
3" X 1/2"	5.31 [134,9]	1.88 [47,6]	3.99 [101,5]	2.99 [76,1]	1.25 [31,8]	1.62 [41,1]	1.51 [38,3]
4" X 1/4"	5.81 [147,6]	2.13 [54,0]	4.51 [114,5]	3.51 [89,1]	1.78 [45,1]	2.13 [54,2]	3.41 [86,5]
4" X 3/8"	5.81 [147,6]	2.13 [54,0]	4.51 [114,5]	3.51 [89,1]	1.78 [45,1]	2.13 [54,2]	3.41 [86,5]
4" X 1/2"	5.81 [147,6]	2.13 [54,0]	4.51 [114,5]	3.51 [89,1]	1.78 [45,1]	2.13 [54,2]	2.24 [57,0]

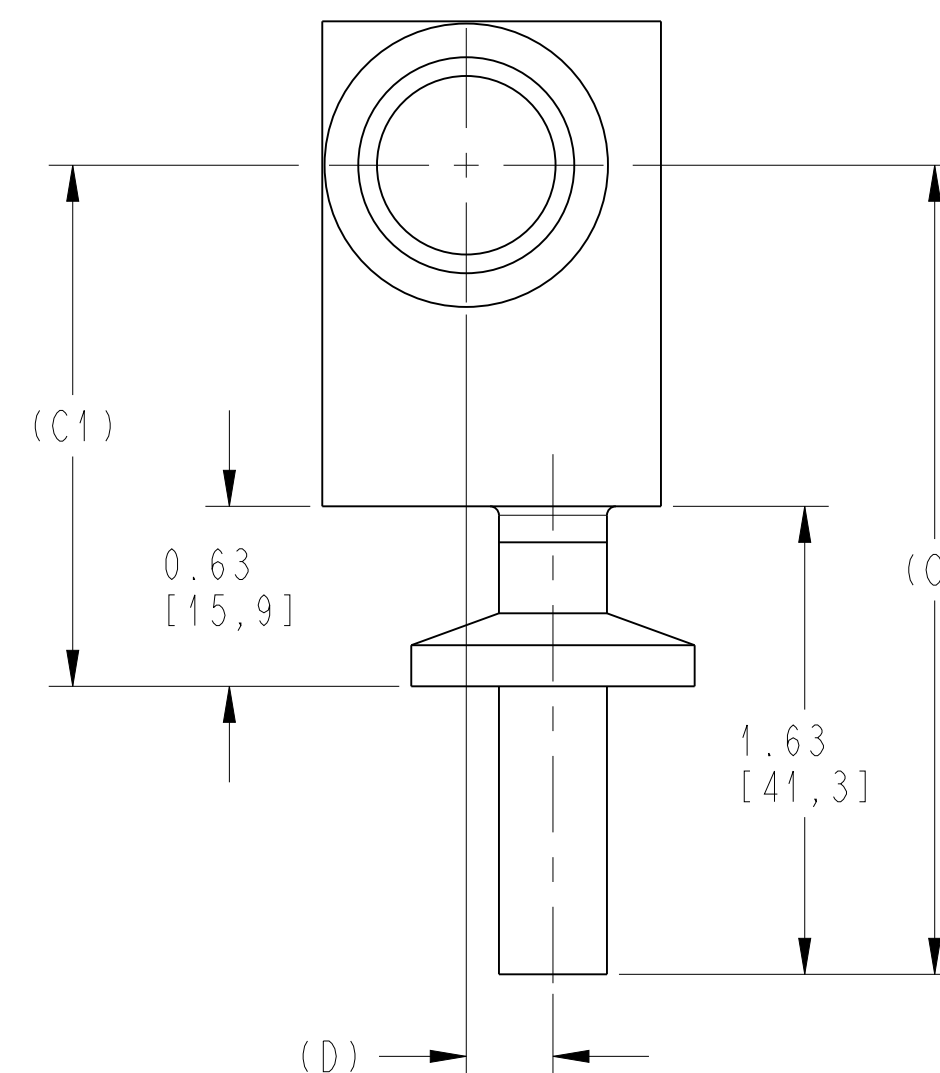
- NOTES:
1. "P" NUMBERS INDICATE PORT CONNECTION.
2. TUBE ENDS MEET OR EXCEED THE FOLLOWING TANGENT ENDS
1/4" - 1-1/2" = 1-1/2"; 2" - 3" = 1-3/4"; 4" = 2"
3. VALVE MUST BE MOUNTED WITH P3 VERTICALLY DOWN.



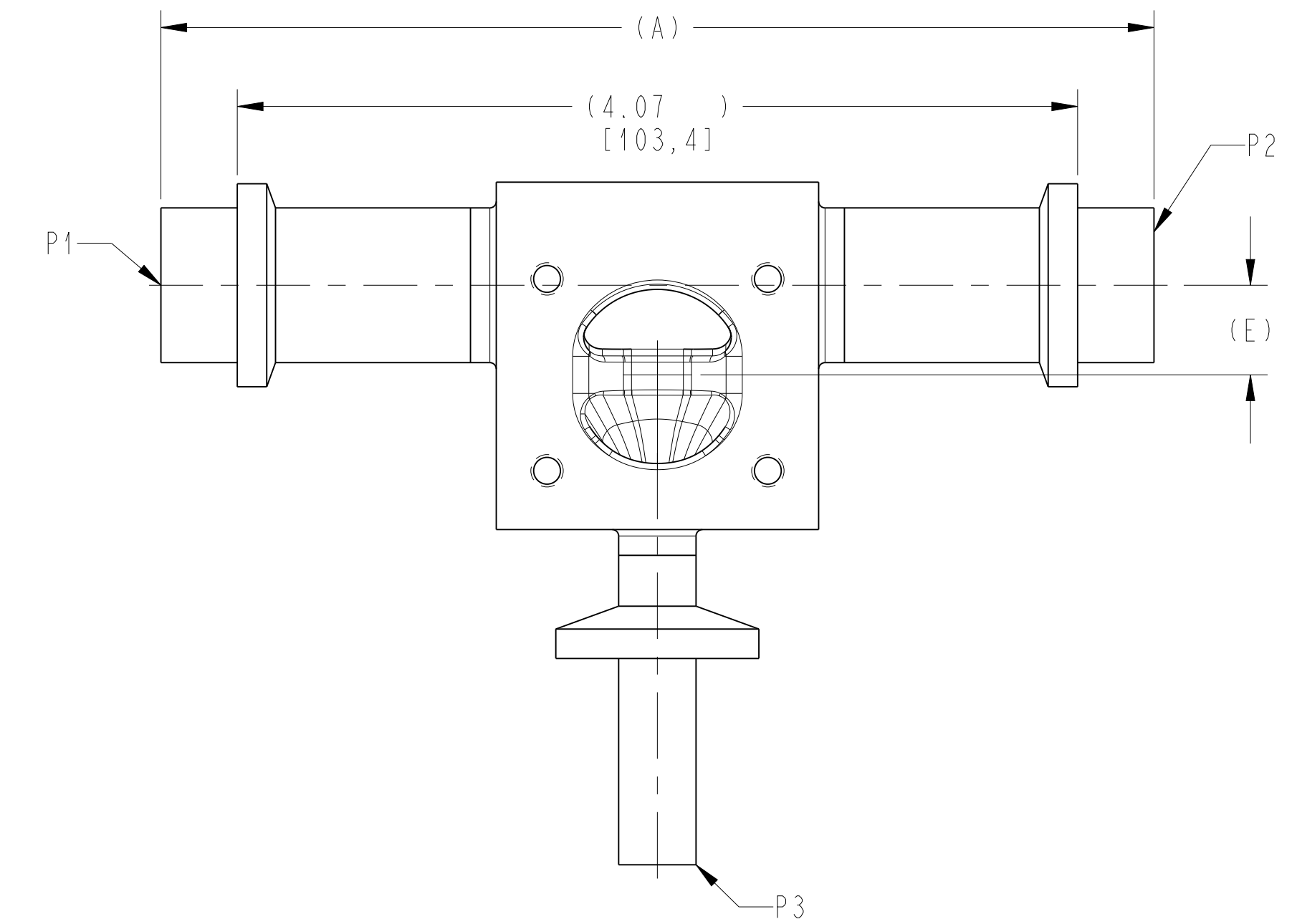
ISOMETRIC VIEW



FRONT VIEW TEE ASSY.



SIDE VIEW



FRONT VIEW TEE ASSY.

LIST OF MAJOR COMPONENTS		
ITEM	DESCRIPTION	QTY
1	BODY BP-BT (122645)	1
2	TUBE	2
3	FERRULE TRI-CLAMP BW	2
4	FERRULE TRI-CLAMP SW	1
5	TUBE	1

PURE-FLO ORDER: _____ ITEM: _____
CUSTOMER: _____
CUSTOMER PO: _____
OTHER INFO: _____

THIS DOCUMENT IS THE SOLE PROPERTY OF ITT CORPORATION, OR ITS SUBSIDIARY, AND IS PROVIDED SUBJECT TO RETURN. IT IS ISSUED IN STRICT CONFIDENCE AND SHALL NOT BE REPRODUCED, OR COPIED, OR DISCLOSED IN WHOLE OR IN PART, OR USED AS THE BASIS FOR THE MANUFACTURE OR SALES OF APPARATUS OR PARTS TO WHICH THE DOCUMENT RELATES, WITHOUT THE EXPRESS WRITTEN CONSENT OF ITT CORPORATION, OR ITS SUBSIDIARY. THIS LEGEND SHALL BE MARKED ON ANY REPRODUCTION HEREOF, IN WHOLE OR IN PART. ALL RIGHTS TO THE INFORMATION AND DESIGN DISCLOSED HEREIN ARE RESERVED TO ITT CORPORATION, OR ITS SUBSIDIARY.

THIRD ANGLE PROJECTION
UNLESS OTHERWISE NOTED
INCH
MM
UNLESS OTHERWISE SPECIFIED, ALL DIMENSIONS ARE IN INCHES/MM

DATE	BY
01-03-14	LFV
CHKD	MMA
01-03-14	
APVD	MMA
01-03-14	

ZERO STATIC TEE ASSY.
BIOPURE - BIOTEK
1/4" - 4" RUN
MASTER DWG: A28673/-
ECN# 14763

ITT
Pure-Flo
www.ittpureflo.com
D A28673
SHEET 1 OF 1
REV -
ISSUE BY: _____ CERT BY: _____