


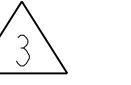

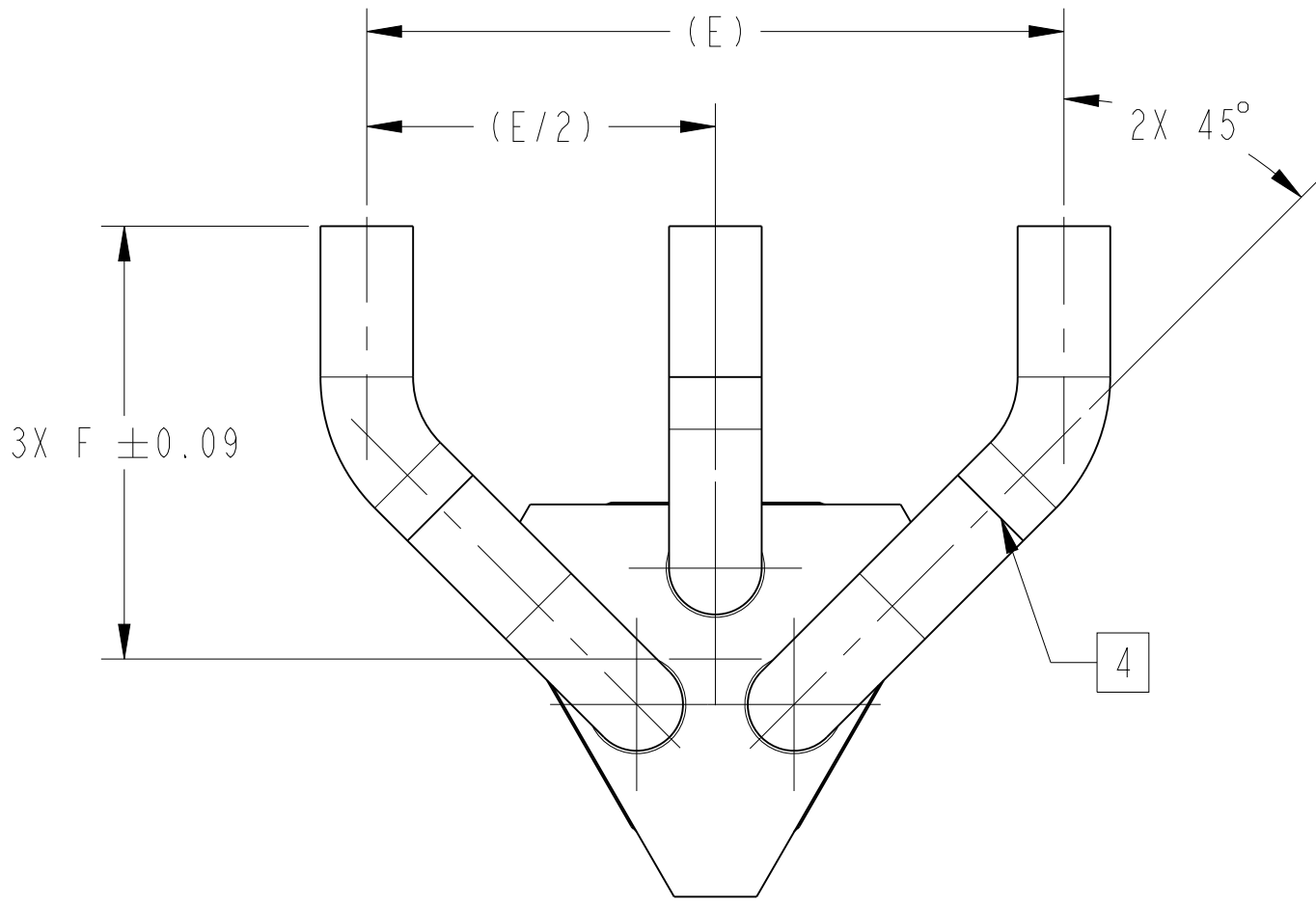


VALVE SIZE	A	A1	B	B1	C	C1	D	E	F	F1
1/2" W2	1.63 [41,3]	1.26 [31,9]	(2.64) [67,1]	(2.27) [57,7]	(6.78) [172,2]	(6.41) [162,8]	3.13 [79,4]	(6.26) [158,9]	4.59 [116,6]	3.34 [84,8]
3/4" W2	1.63 [41,3]	1.26 [31,9]	(3.01) [76,3]	(2.64) [66,9]	(7.51) [190,8]	(7.14) [181,4]	3.13 [79,4]	(7.16) [181,8]	4.61 [117,0]	3.36 [85,3]
1" W2	1.63 [41,3]	1.26 [31,9]	(3.01) [76,3]	(2.64) [66,9]	(7.51) [190,8]	(7.14) [181,4]	3.13 [79,4]	(7.53) [191,2]	4.67 [118,7]	3.55 [90,1]
1-1/2" W2	1.63 [41,3]	1.26 [31,9]	(3.58) [90,8]	(3.21) [81,4]	(9.40) [238,8]	(9.03) [229,4]	3.88 [98,4]	(9.63) [244,6]	5.50 [139,7]	4.44 [112,7]
2" W2	1.88 [47,6]	1.26 [31,9]	(3.86) [97,9]	(3.24) [82,2]	(10.71) [272,0]	(10.09) [256,3]	4.88 [123,8]	(12.18) [309,4]	6.73 [170,8]	5.48 [139,1]

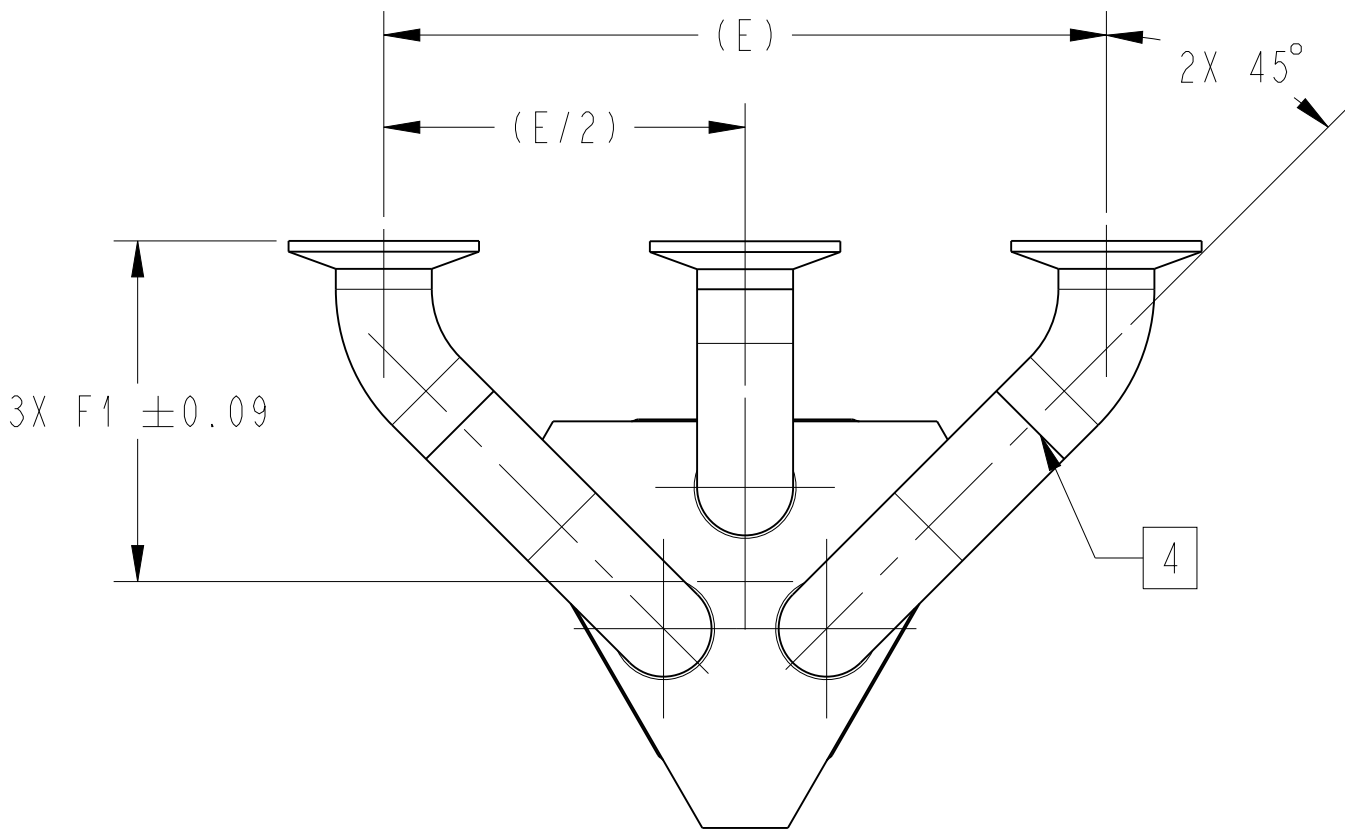
TAG NUMBERS			
			
	VALVE ASSY	FIRST VALVE	SECOND VALVE
			
			THIRD VALVE
1			

LIST OF MAJOR COMPONENTS	
ITEM	DESCRIPTION
1	3DV W2 BODY, (123796)
2	ELBOW 45 DEG WBxFT (123288)
3	ELBOW 45 DEG WBxTC (123289)
4	ELBOW 90 DEG BPE
5	FERRULE TRI-CLAMP SW
6	FERRULE TRI-CLAMP BW
7	TUBE

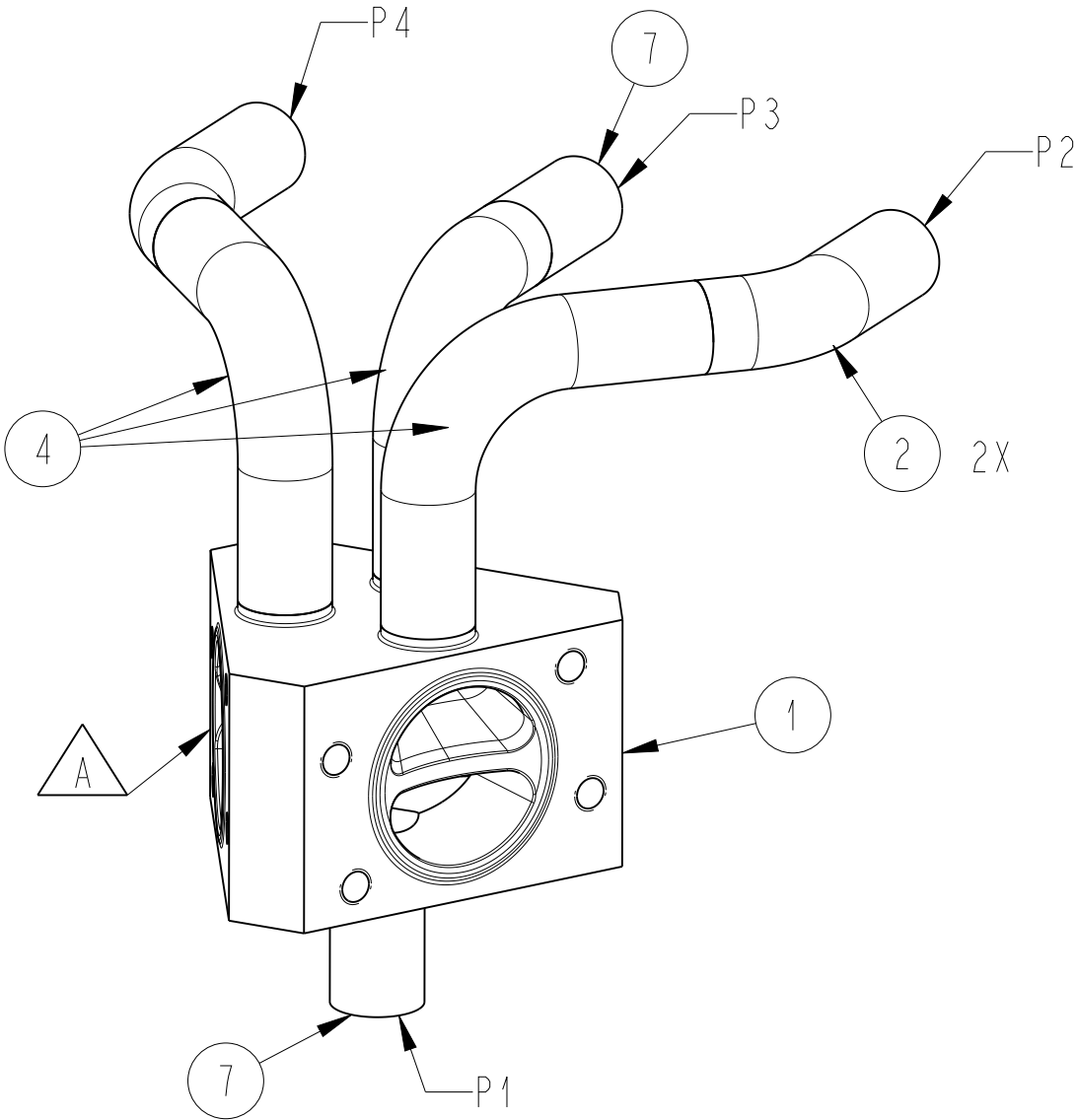
- NOTES:
- "P" NUMBERS INDICATE PORT CONNECTIONS.
 - TUBE ENDS MEET OR EXCEED THE FOLLOWING LENGTHS
1/2" - 1-1/2" = 1-1/2", 2" = 1-3/4"
 - VALVE MUST BE INSTALLED WITH P1 VERTICALLY (UP OR DOWN) FOR OPTIMAL DRAINABILITY.
-  4. ALL ELBOW WELD WILL BE IN AS WELDED CONDITION, EXCEPT WHERE CONNECTED TO FERRULE.



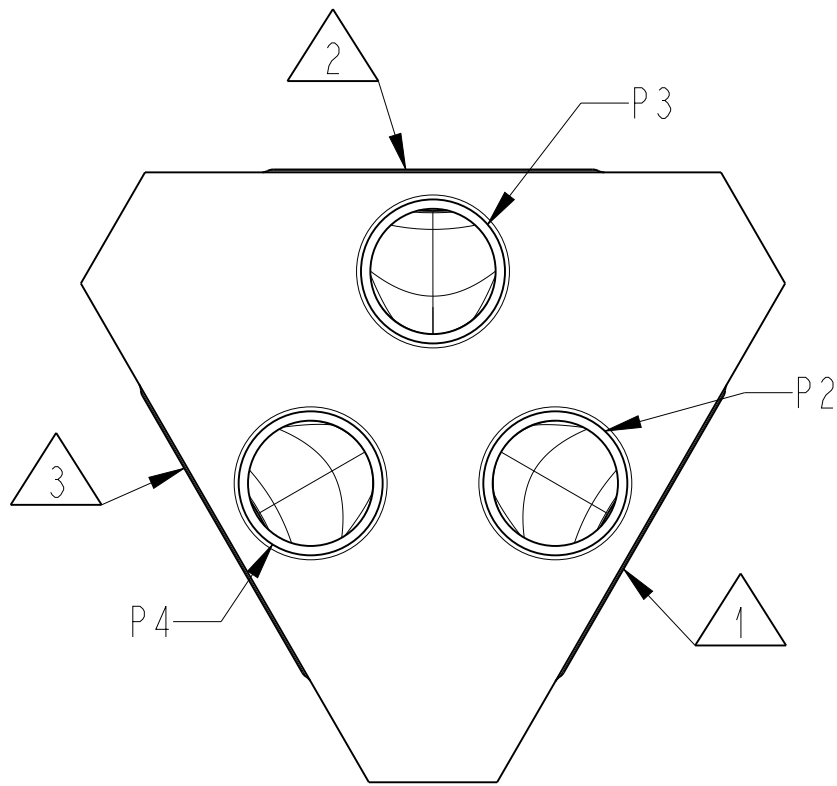
TOP VIEW



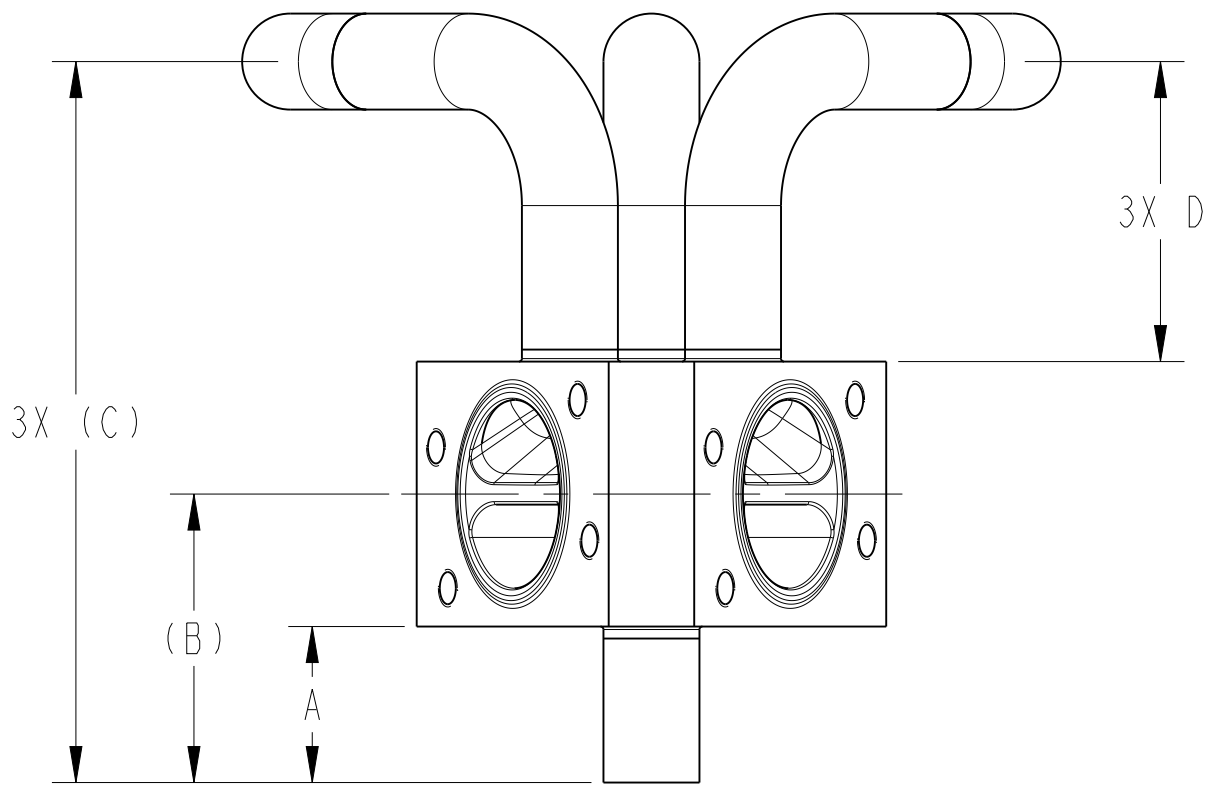
TOP VIEW



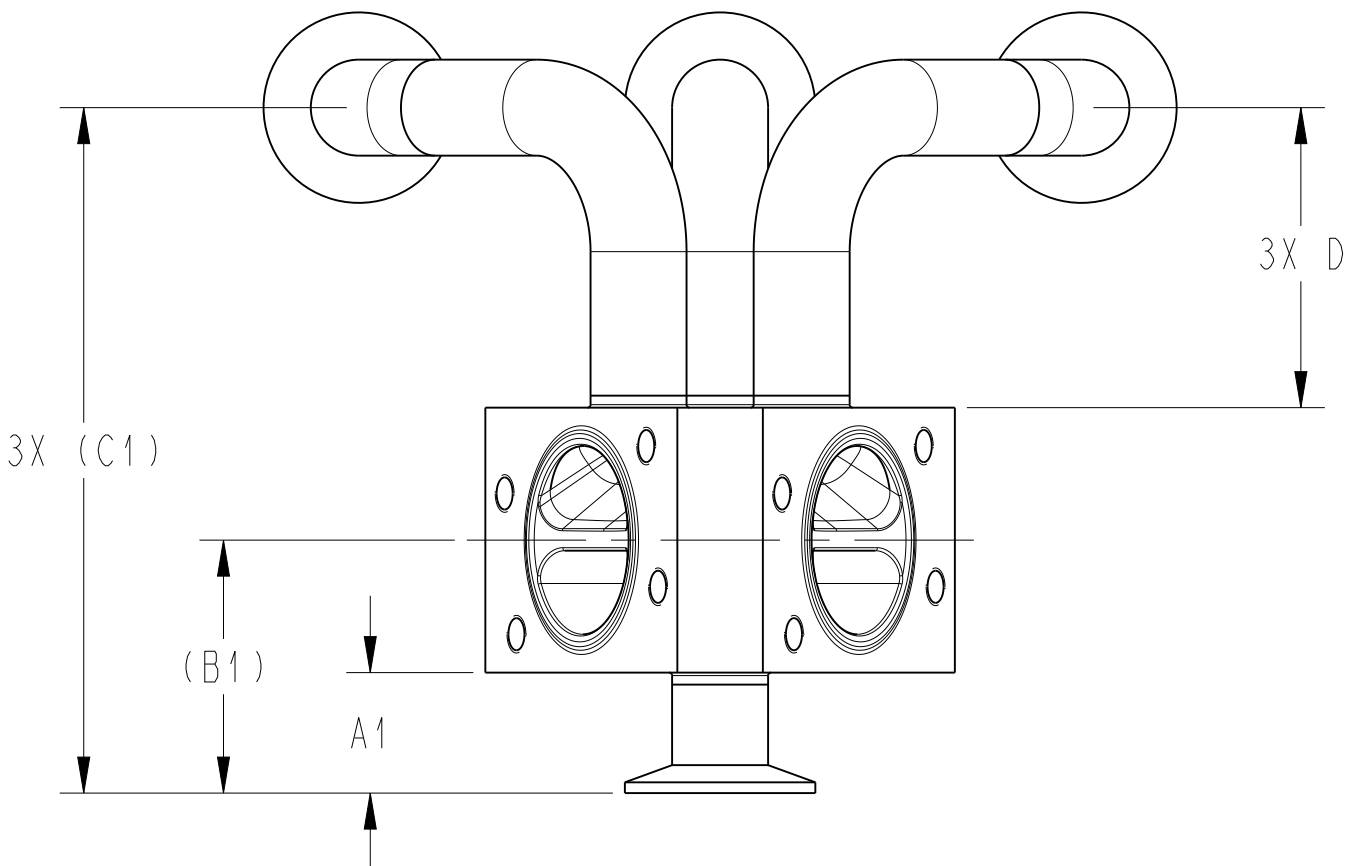
ISOMETRIC VIEW



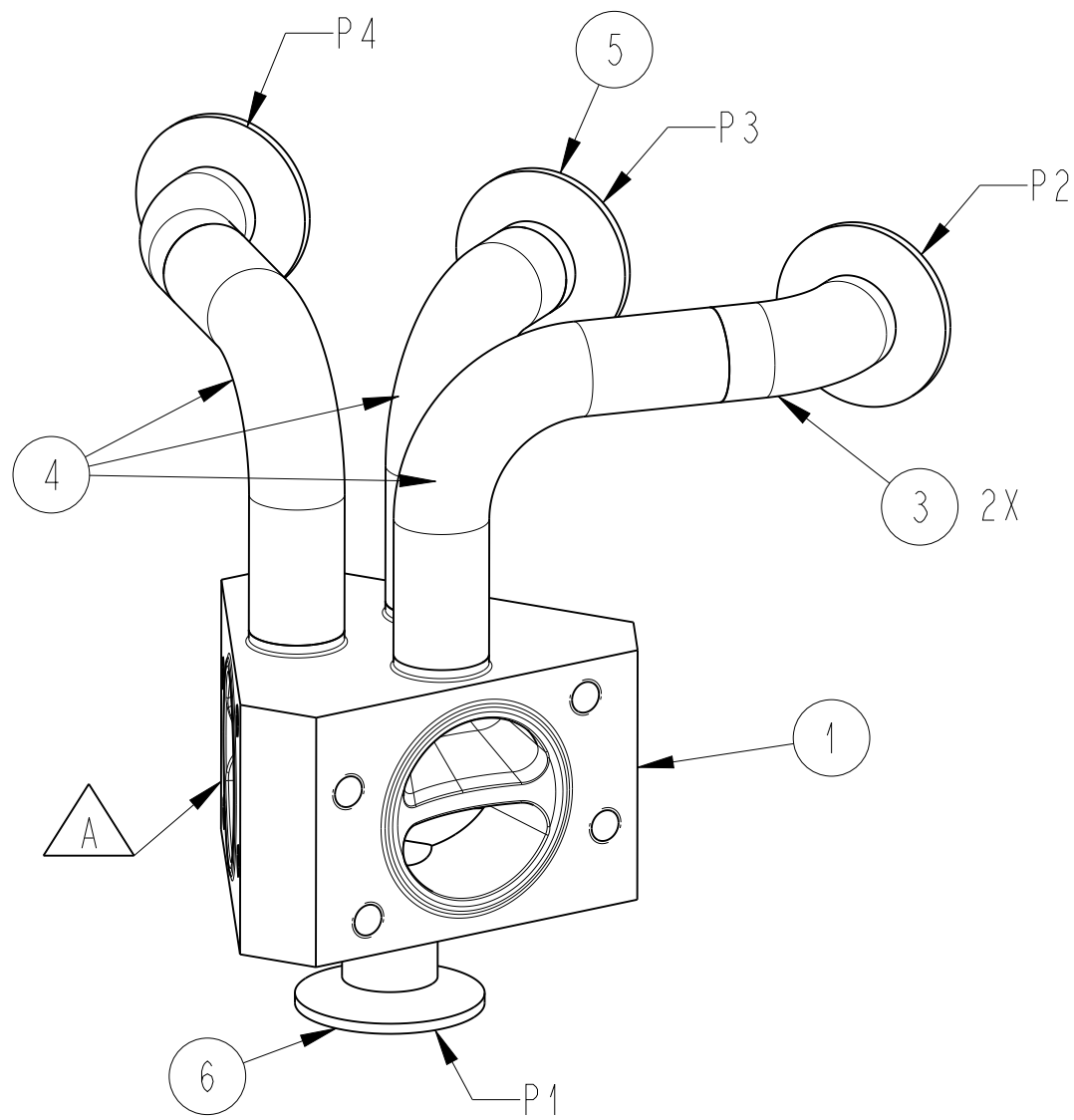
TOP VIEW



FRONT VIEW



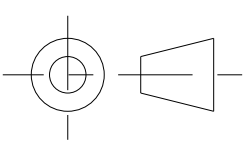
FRONT VIEW



ISOMETRIC VIEW

PURE-FLO ORDER: -	ITEM: -
CUSTOMER: -	
CUSTOMER PO: -	
OTHER INFO: -	

THIS DOCUMENT IS THE SOLE PROPERTY OF ITT CORPORATION, OR ITS SUBSIDIARY, AND IS PROVIDED SUBJECT TO RETURN. IT IS ISSUED IN STRICT CONFIDENCE AND SHALL NOT BE REPRODUCED, OR COPIED, OR DISCLOSED IN WHOLE OR IN PART, OR USED AS THE BASIS FOR THE MANUFACTURE OR SALES OF APPARATUS OR PARTS TO WHICH THE DOCUMENT RELATES, WITHOUT THE EXPRESS WRITTEN CONSENT OF ITT CORPORATION, OR ITS SUBSIDIARY. THIS LEGEND SHALL BE MARKED ON ANY REPRODUCTION HEREOF, IN WHOLE OR IN PART. ALL RIGHTS TO THE INFORMATION AND DESIGN DISCLOSED HEREIN ARE RESERVED TO ITT CORPORATION, OR ITS SUBSIDIARY.

THIRD ANGLE PROJECTION

UNLESS OTHERWISE SPECIFIED, ALL DIMENSIONS ARE IN INCHES (MM)

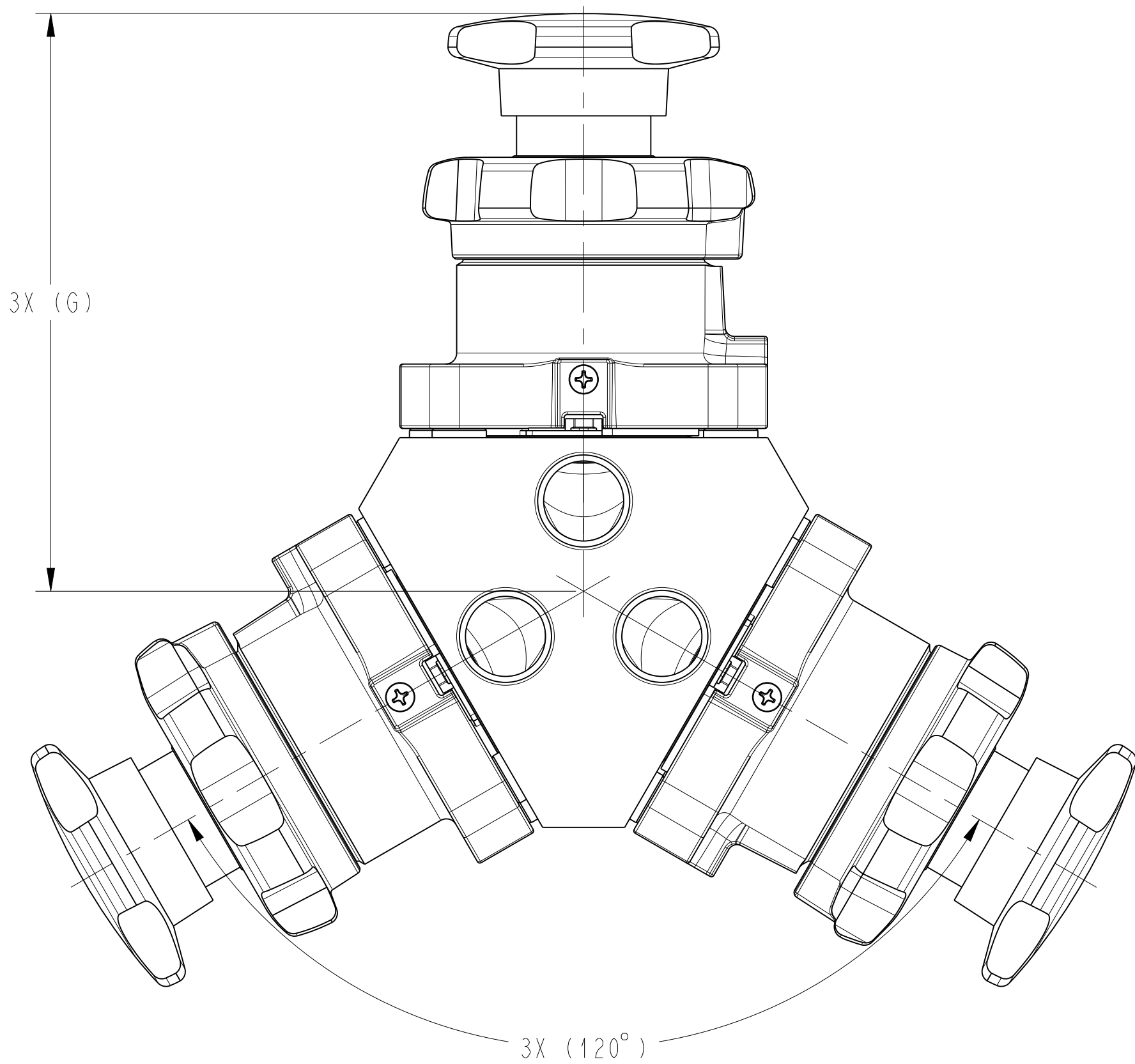
UNLESS OTHERWISE NOTED	
INCH	MM
X : ± 0.06	X : ± 1.5
XX : ± 0.06	XX : ± .5
XXX : ± 0.02	
X/2 : ± 1/16	
X° : ± 1°	X° : ± 1°

DATE	BY
07/08/21	LFV
CHKD	KRP
07/08/21	
APVD	TJS
07/08/21	

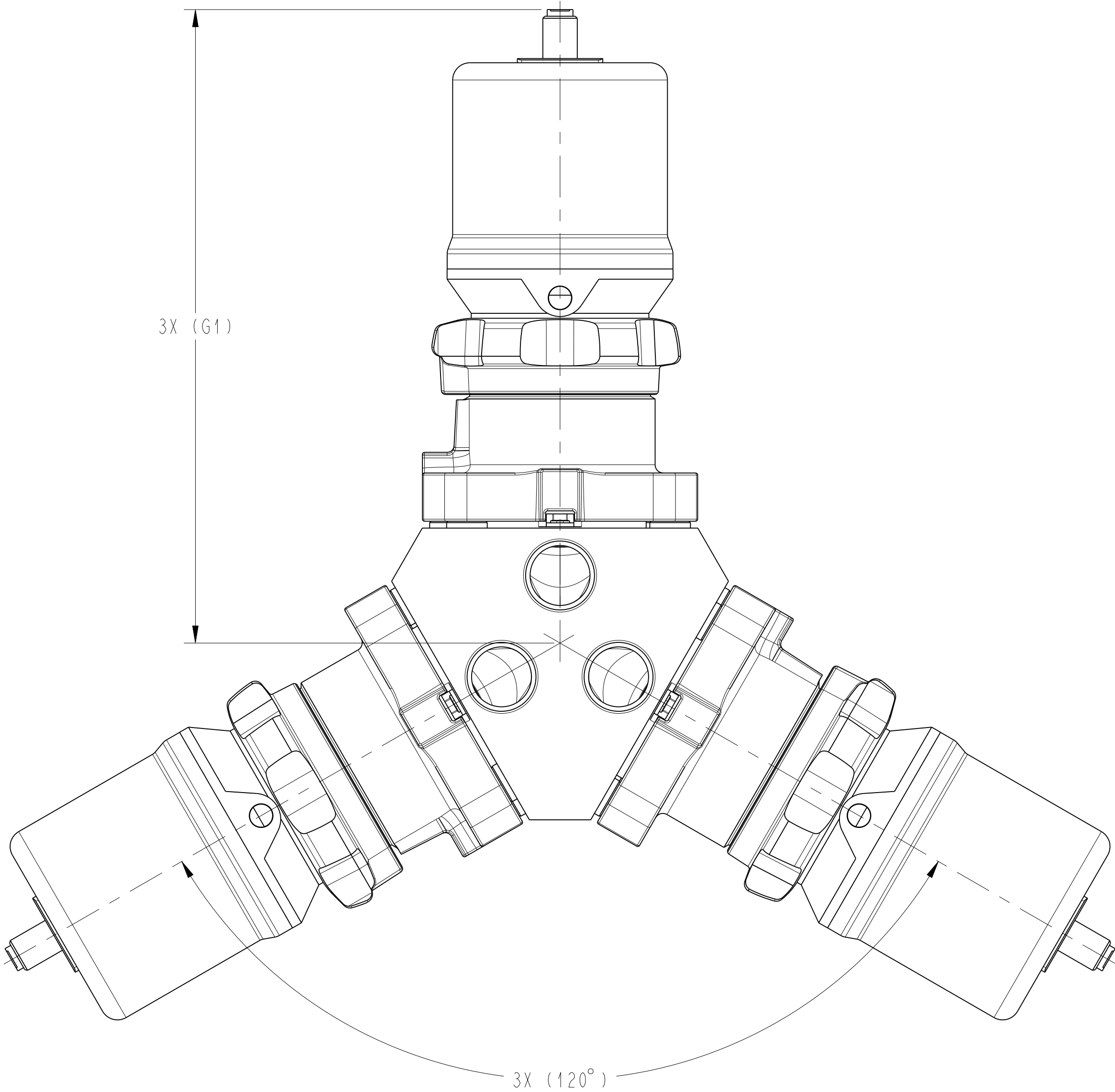
3-WAY DIVERT W2 ASSY. OPTION-3
-
-
MASTER DWG: A30495/A
ECN# 18436

	Pure-Flo www.ittpureflo.com	
D	A30495	SHEET 1 OF 3
		REV A
ISSUE BY: -	CERT BY: -	

VALVE SIZE	G	G1
1/2" W2	(4.50) [114,3]	(7.03) [178,4]
3/4" W2	(6.03) [153,3]	(8.95) [227,4]
1" W2	(6.28) [159,5]	(9.20) [233,6]
1-1/2" W2	(8.44) [214,3]	(13.43) [341,1]
2" W2	(9.52) [241,9]	(14.51) [368,6]



TOP VIEW



TOP VIEW

PURE-FLO ORDER: -	ITEM: -
CUSTOMER: -	
CUSTOMER PO: -	
OTHER INFO: -	
-	

THIS DOCUMENT IS THE SOLE PROPERTY OF ITT CORPORATION, OR ITS SUBSIDIARY, AND IS PROVIDED SUBJECT TO RETURN. IT IS ISSUED IN STRICT CONFIDENCE AND SHALL NOT BE REPRODUCED, OR COPIED, OR DISCLOSED IN WHOLE OR IN PART, OR USED AS THE BASIS FOR THE MANUFACTURE OR SALES OF APPARATUS OR PARTS TO WHICH THE DOCUMENT RELATES, WITHOUT THE EXPRESS WRITTEN CONSENT OF ITT CORPORATION, OR ITS SUBSIDIARY. THIS LEGEND SHALL BE MARKED ON ANY REPRODUCTION HEREOF, IN WHOLE OR IN PART. ALL RIGHTS TO THE INFORMATION AND DESIGN DISCLOSED HEREIN ARE RESERVED TO ITT CORPORATION, OR ITS SUBSIDIARY.

THIRD ANGLE PROJECTION
UNLESS OTHERWISE SPECIFIED, ALL DIMENSIONS ARE IN INCHES (MM)

UNLESS OTHERWISE NOTED			
INCH		MM	
X	± 0.06	X	± 1.5
.XX	± 0.06	.XX	± 1.5
.XXX	± 0.02	.XXX	± 1.5
X/XX	± 1/16	X/XX	± 1.5
X°	± 1°	X°	± 1°

	DATE	BY
DWN	07/08/21	LFV
CHKD	07/08/21	KRP
APVD	07/08/21	TJS

3-WAY DIVERT W2 ASSY. OPTION-3		
-	-	-
-	-	-
MASTER DWG:	A30495/A	ECN# 18436

	SHEET 2 OF 3		REV A
D	A30495	ISSUE BY: -	CERT BY: -