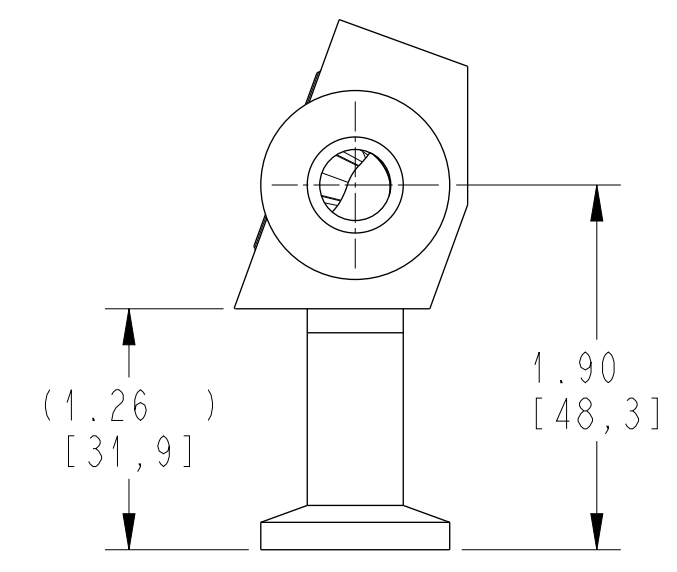
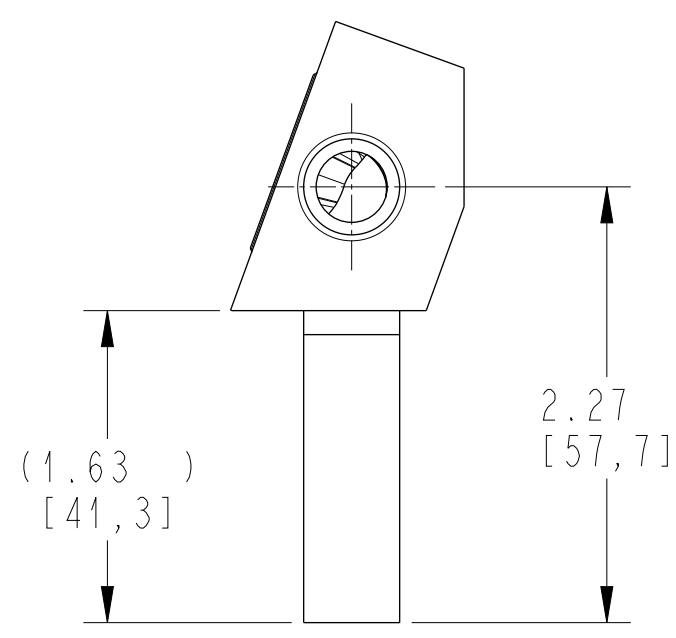
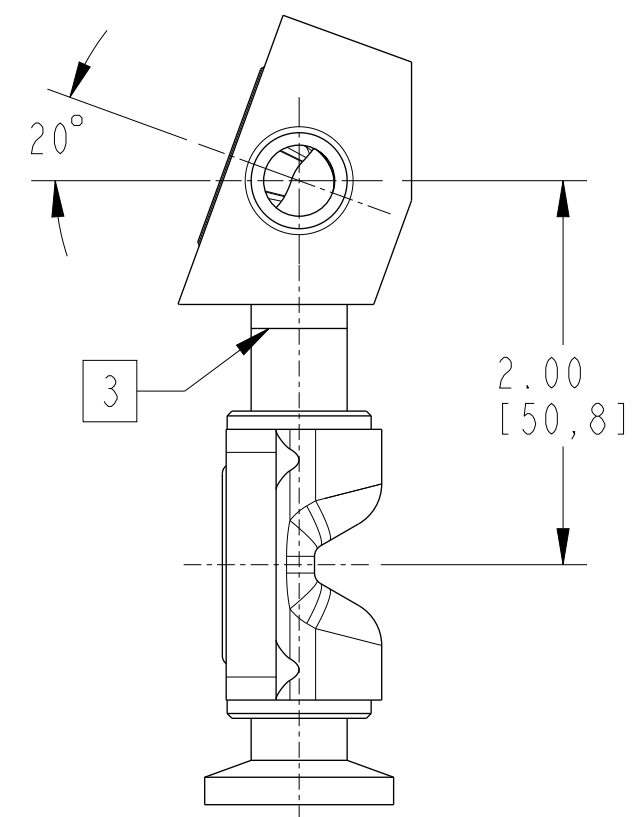
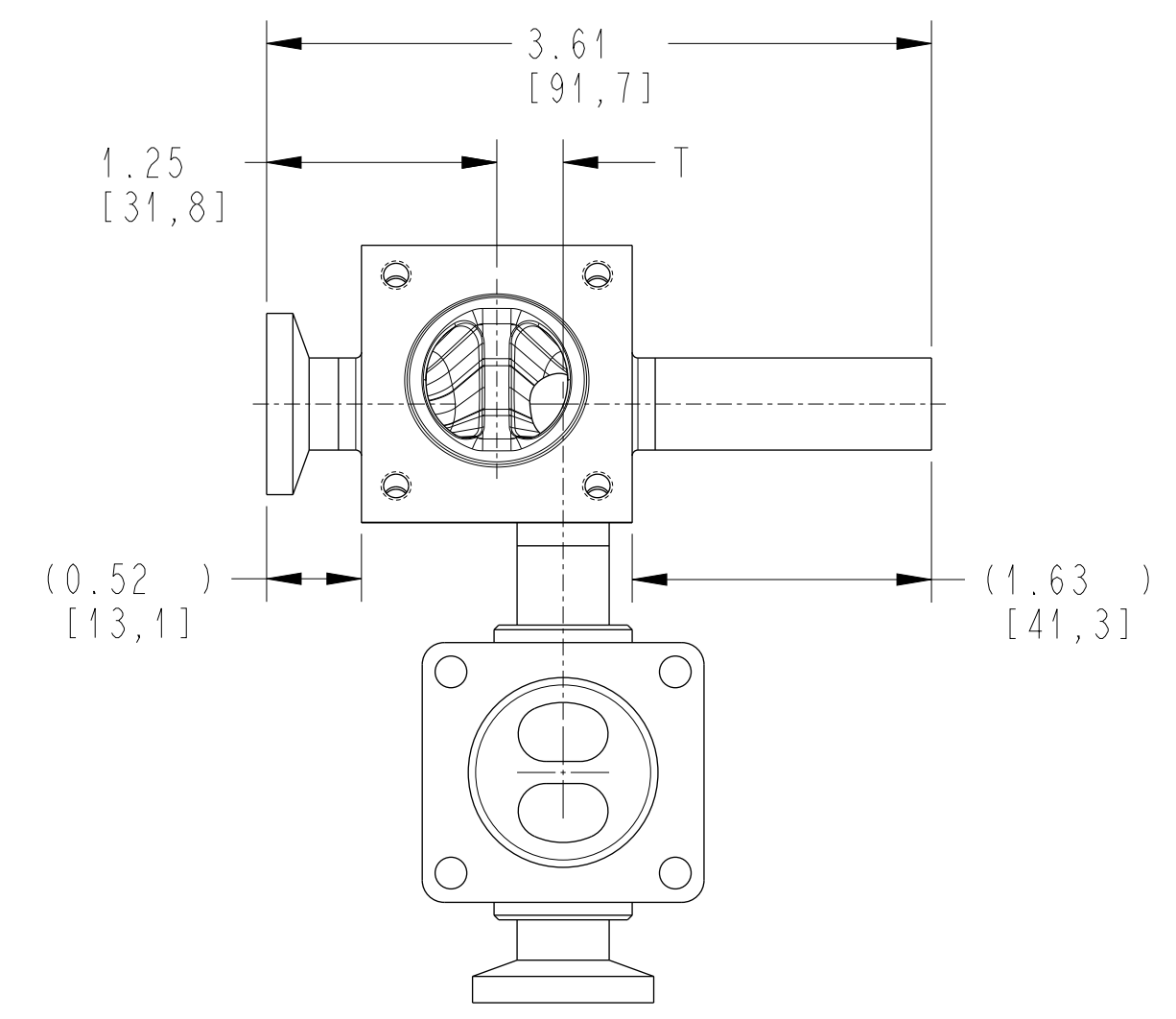
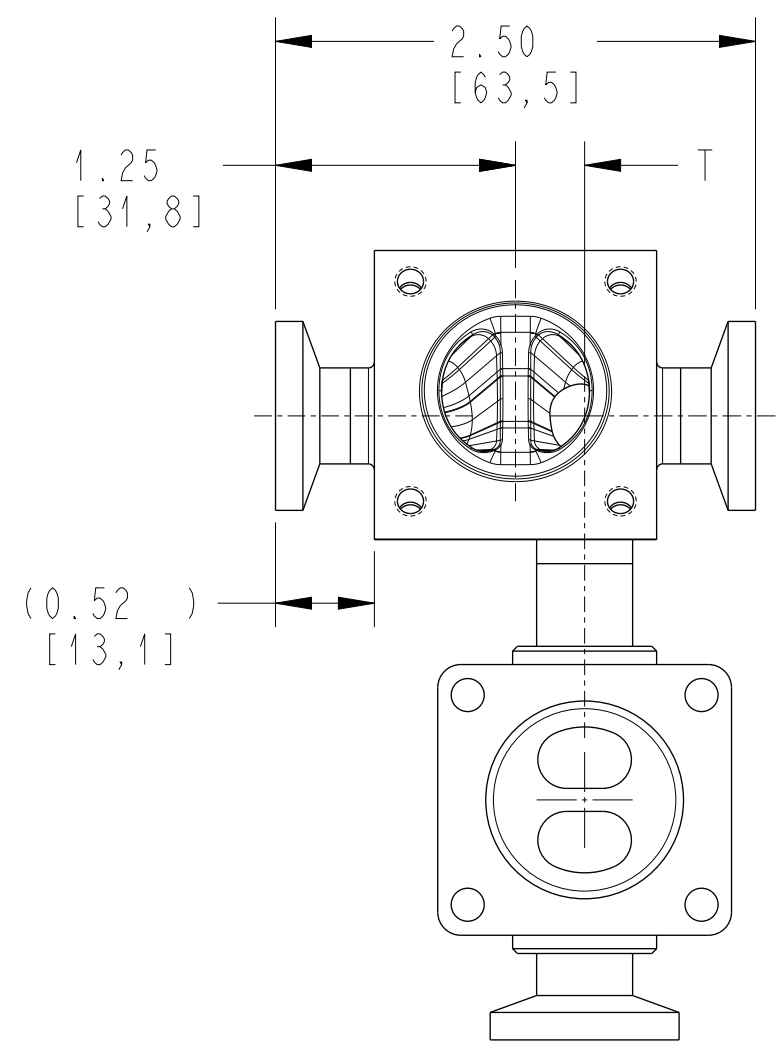
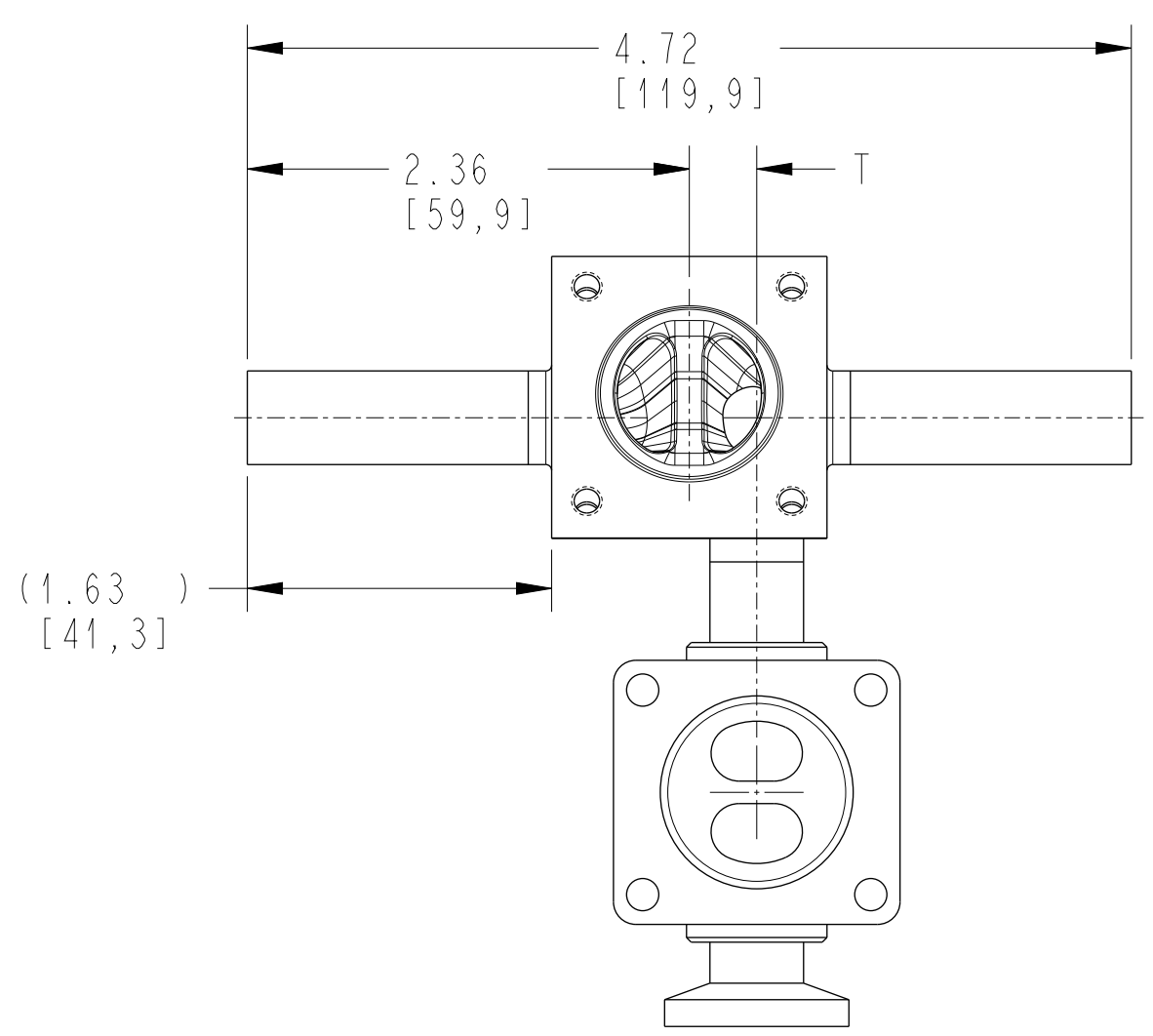


MAIN VALVE STER. ACCESS OFFSET	
PURGE	T
0.250 [6]	0.48 [12,2]
0.375 [10]	0.42 [10,7]
0.500 [15]	0.36 [9,1]



NOTES:

1. SEE DRAWING K30404A FOR PORT MACHINING.
2. LOCATE AIR CONNECTIONS ON SAME SIDE AS PURGE.
3. WELDS WILL BE LEFT IN THE AS WELDED CONDITION.



THIS DOCUMENT IS THE SOLE PROPERTY OF ITT CORPORATION, OR ITS SUBSIDIARY, AND IS PROVIDED SUBJECT TO RETURN. IT IS ISSUED IN STRICT CONFIDENCE AND SHALL NOT BE REPRODUCED, OR COPIED, OR DISCLOSED IN WHOLE OR IN PART, OR USED AS THE BASIS FOR THE MANUFACTURE OR SALES OF APPARATUS OR PARTS TO WHICH THE DOCUMENT RELATES, WITHOUT THE EXPRESS WRITTEN CONSENT OF ITT CORPORATION, OR ITS SUBSIDIARY. THIS LEGEND SHALL BE MARKED ON ANY REPRODUCTION HEREOF, IN WHOLE OR IN PART. ALL RIGHTS TO THE INFORMATION AND DESIGN DISCLOSED HEREIN ARE RESERVED TO ITT CORPORATION, OR ITS SUBSIDIARY.

PURE-FLO ORDER: -	ITEM: -	THIRD ANGLE PROJECTION	UNLESS OTHERWISE NOTED	DATE	BY	STERILE ACCESS		Pure-Flo www.ittpureflo.com
CUSTOMER: -			INCH MM	DWN 01/18/22	LFV	1/2" 16GA BIOVIZION FABRICATION		
CUSTOMER PO: -			X = ± 0.06	CHKD 01/18/22	KRP	PURGE 1/4" - 1/2"	ITT	SHEET REV 1 OF 1 -
OTHER INFO: -		UNLESS OTHERWISE SPECIFIED, ALL DIMENSIONS ARE IN INCHES [MM]	.X = ± 0.06 .XX = ± 0.06 .XXX = ± 0.02 X/X = ± 1/16 X° = ± 1.5° X° = ± 5°	APVD 01/18/22	TJS	MASTER DWG: A30837A/-		